

Pneumatic Valve Actuators

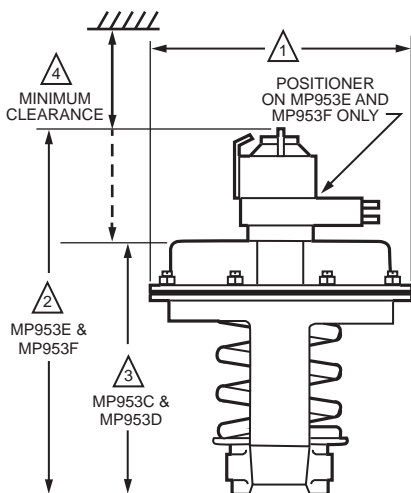
MP953C,D Pneumatic Coil Valve Actuators



Pneumatic actuators provide proportional control of steam or hot or cold liquids in HVAC systems by operating V5011, V5013, and VGF valve assemblies. Replacement devices are available for older Honeywell actuators.

- Rolling diaphragm for long life and low hysteresis.
- Easily attached to valve.
- Can be installed after piping valve.
- Slide lock feature permits simple engagement to valve stem.
- Direct- or reverse-action control.
- Does not include positive positioner.

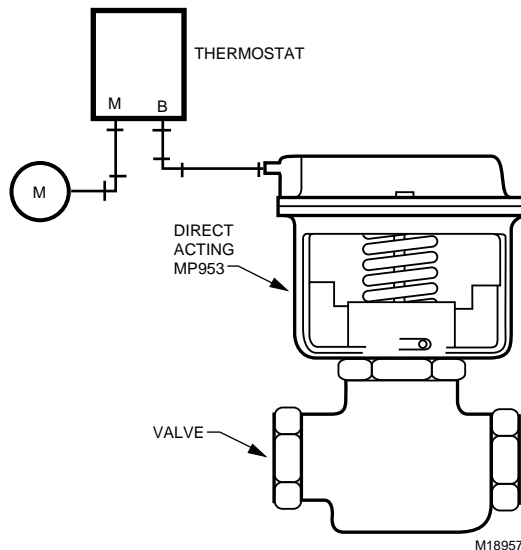
Dimensions in inches (millimeters)



OPERATION SIZE NOMINAL DIA.	1	2	3	4
5 INCH	5-1/8 (130)	9-1/4 (235)	4-5/8 (117)	4-3/8 (111)
7-1/8 INCH	7-1/8 (181)	10-1/2 (267)	5-5/8 (143)	4-3/8 (111)
8 INCH	8-1/4 (210)	11-1/8 (283)	6-1/2 (165)	5-3/8 (137)
13 INCH	13-1/2 (343)	18-1/8 (460)	10 (254)	7-11/16 (195)

M13903

Typical MP953C,D Operation



M18957

Actuator Type: Valve

Fail Safe Mode: Spring Return

Air Connections: Dual barbed fitting for 5/32 in. O.D. and 1/4 in. O.D. plastic tubing

Temperature Range: 0 F to 140 F (-18 C to +60 C)

Maximum Operating Pressure: 25 psi (172 kPa)

Humidity Range: 5 to 95% RH

Product Number	Action	Actuator Force	Spring Range		Stroke		Comments	Includes
			(psi)	(kPa)	(inch)	(mm)		
MP953C1000/U	Direct Acting	Low	2 psi to 7 psi	14 kPa to 48 kPa	3/4 in.	19 mm	—	—
MP953C1018/U	Direct Acting	Low	8 psi to 12 psi	55 kPa to 83 kPa	3/4 in.	19 mm	—	—
MP953C1026/U	Direct Acting	Low	4 psi to 11 psi	28 kPa to 76 kPa	3/4 in.	19 mm	—	—
MP953C1067/U	Direct Acting	Medium	2 psi to 7 psi	14 kPa to 48 kPa	3/4 in.	19 mm	—	311851-062 Stem Extension Assembly
MP953C1075/U	Direct Acting	Medium	8 psi to 12 psi	55 kPa to 83 kPa	3/4 in.	19 mm	—	311851-062 Stem Extension Assembly
MP953C1083/U	Direct Acting	Medium	4 psi to 11 psi	28 kPa to 76 kPa	3/4 in.	19 mm	—	311851-062 Stem Extension Assembly
MP953C1471/U	Direct Acting	High	2 psi to 7 psi	14 kPa to 48 kPa	1 1/2 in.	38 mm	—	312466-605 Stem Extension Assembly
MP953C1489/U	Direct Acting	High	4 psi to 11 psi	28 kPa to 76 kPa	1 1/2 in.	38 mm	—	312466-605 Stem Extension Assembly
MP953C1547/U	Direct Acting	Medium	3 psi to 15 psi	21 kPa to 104 kPa	1 1/2 in.	38 mm	—	—
MP953C1554/U	Direct Acting	High	2 psi to 7 psi	14 kPa to 48 kPa	3/4 in.	19 mm	13 in. diameter Actuator for 2-1/2 in. and 3 in. valves	14004697-001 Stem Extension Assembly
MP953C1562/U	Direct Acting	High	4 psi to 11 psi	28 kPa to 76 kPa	3/4 in.	19 mm	13 in. diameter Actuator for 2-1/2 in. and 3 in. valves	14004697-001 Stem Extension Assembly
MP953D1107/U	Reverse Acting	Medium	8 psi to 13 psi	55 kPa to 90 kPa	3/4 in.	19 mm	—	—
MP953D1131/U	Reverse Acting	Medium	4 psi to 11 psi	28 kPa to 76 kPa	3/4 in.	19 mm	—	—
MP953D1172/U	Reverse Acting	Medium	3 psi to 7 psi	21 kPa to 48 kPa	3/4 in.	19 mm	—	—

Pneumatic Valve Actuators

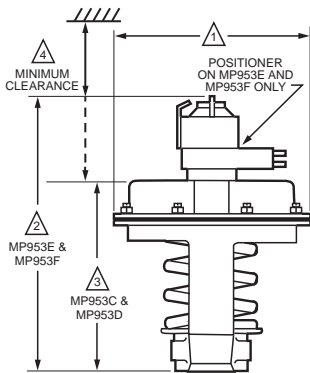
MP953E,F Pneumatic Coil Valve Actuators



Pneumatic actuators provide proportional control of steam or hot or cold liquids in HVAC systems by operating V5011, V5013, and VGF valve assemblies. Replacement devices are available for older Honeywell actuators.

- Rolling diaphragm for long life and low hysteresis.
- Easily attached to valve.
- Can be installed after piping valve.
- Slide lock feature permits simple engagement to valve stem.
- Direct- or reverse-action control.
- Integral positive positioner relay provides positive positioning under varying load conditions.

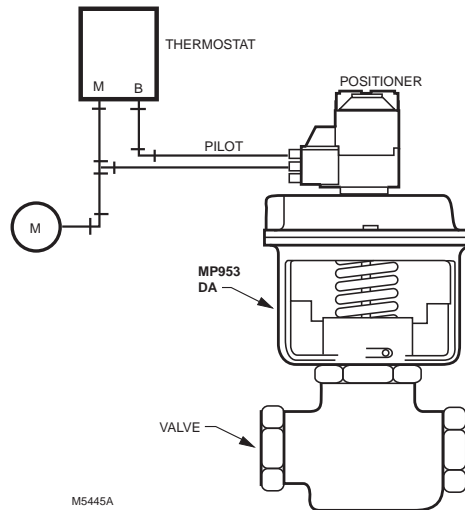
Dimensions in inches (millimeters)



OPERATION SIZE NOMINAL DIA	△1	△2	△3	△4
5 INCH	5 1/8 (130)	9 1/4 (235)	4 5/8 (117)	4 3/8 (111)
7 1/8 INCH	7 1/8 (181)	10 1/2 (267)	5 5/8 (143)	4 3/8 (111)
8 INCH	8 1/4 (210)	11 1/8 (283)	6 1/2 (165)	5 3/8 (137)
13 INCH	13 1/2 (343)	18 1/8 (460)	10 (254)	7 11/16 (195)

M13903

Typical Piping for MP953E,F Pneumatic Valve Actuator Wiring



M5445A

Actuator Type: Valve
Temperature Range: 0 F to 140 F (-18 C to +60 C)
Maximum Operating Pressure: 25 psi (172 kPa)
Humidity Range: 5 to 95% RH

Product Number	Action	Actuator Force	Spring Range		Stroke		Includes
			(psi)	(kPa)	(inch)	(mm)	
MP953E1285/U	Direct Acting	Medium	4 psi to 11 psi	28 kPa to 76 kPa	1 1/2 in.	38 mm	Positive Positioner with 5 psi (35 kPa) range
MP953E1301/U	Direct Acting	Low	4 psi to 11 psi	28 kPa to 76 kPa	3/4 in.	19 mm	Positive Positioner with 3 psi range (21kPa)
MP953E1319/U	Direct Acting	Low	4 psi to 11 psi	28 kPa to 76 kPa	3/4 in.	19 mm	Positive Positioner with 5 psi range (35 kPa)
MP953E1327/U	Direct Acting	Low	4 psi to 11 psi	28 kPa to 76 kPa	3/4 in.	19 mm	Positive Positioner with 10 psi range (70 kPa)
MP953E1368/U	Direct Acting	Medium	4 psi to 11 psi	28 kPa to 76 kPa	3/4 in.	19 mm	311851-062 Stem Extension Assembly and Positive Positioner with 3 psi range
MP953E1376/U	Direct Acting	Medium	4 psi to 11 psi	28 kPa to 76 kPa	3/4 in.	19 mm	311851-062 Stem Extension Assembly and Positive Positioner with 5 psi range
MP953E1384/U	Direct Acting	Medium	4 psi to 11 psi	28 kPa to 76 kPa	3/4 in.	19 mm	311851-062 Stem Extension Assembly and Positive Positioner with 10 psi range
MP953E1400/U	Direct Acting	High	4 psi to 11 psi	28 kPa to 76 kPa	1 1/2 in.	38 mm	312466-605 Stem Extension Assembly and Positive Positioner with 5 psi range
MP953E1418/U	Direct Acting	High	4 psi to 11 psi	28 kPa to 76 kPa	1 1/2 in.	38 mm	312466-605 Stem Extension Assembly and Positive Positioner with 10 psi range
MP953E1435/U	Direct Acting	High	4 psi to 11 psi	28 kPa to 76 kPa	3/4 in.	19 mm	14004697-001 Stem Extension Assembly and Positive Positioner with 5 psi range (35 kPa)
MP953E1443/U	Direct Acting	High	4 psi to 11 psi	28 kPa to 76 kPa	3/4 in.	19 mm	Positive Positioner with 10 psi range and 14004697-001 Stem Extension Assembly
MP953F1093/U	Reverse Acting	Medium	8 psi to 13 psi	55 kPa to 90 kPa	3/4 in.	19 mm	Positive Positioner with 3 psi range and EPDM diaphragm
MP953F1101/U	Reverse Acting	Medium	8 psi to 13 psi	55 kPa to 90 kPa	3/4 in.	19 mm	Positive Positioner with 5 psi range and EPDM diaphragm
MP953F1119/U	Reverse Acting	Medium	8 psi to 13 psi	55 kPa to 90 kPa	3/4 in.	19 mm	Positive Positioner with 10 psi range and EPDM diaphragm