

Temperature Controllers

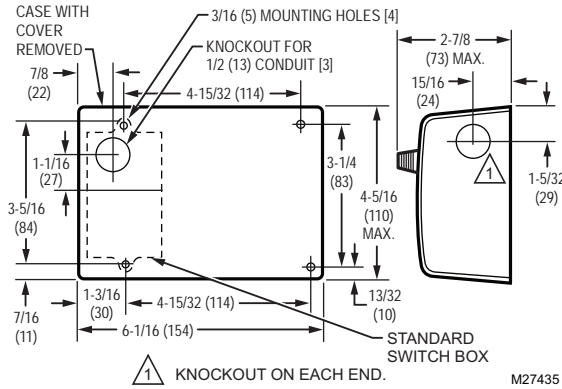
T631A, B, C Farm Controllers



Provide line voltage control of heating, cooling and ventilating systems in farm buildings or storage areas.

- Use in barns, poultry houses, hog barns, pump houses, milk houses and crop storage houses
- Treated to resist corrosion
- Slots in front and bottom of case provide maximum air circulation over the coiled sensing element
- SPDT snap switches permanently sealed against corrosion
- Easy mounting using screws through holes in back of case

Dimensions in inches (millimeters)



Type: Agricultural Temperature Controller

Application: Provide line voltage control of heating, cooling and ventilating systems in farm buildings or storage areas

Sensor Element: Coiled Copper Tube

Color: Red finish

Approvals

Canadian Standards Association: Certified: File No. LR1620, Guide No. 400-E-O

Underwriters Laboratories, Inc: File No. E4436 Vol.1 Sec. UL Guide XAPX

Product Number	Contact Ratings		
	(24 Vac)	(120 Vac)	(240 Vac)
T631A,B,C	2.0A AFL	7.4 AFL, 44.4 ALR	3.7 AFL, 22.2 ALR
T631A1113	—	16.0 AFL, 96.0 ALR	8.0 AFL, 48.0 ALR
T631B1054	—	16.0 AFL, 96.0 ALR	8.0 AFL, 48.0 ALR
T631C1012	—	16.0 AFL, 96.0 ALR	8.0 AFL, 48.0 ALR
T631C1103	—	16.0 AFL, 96.0 ALR	8.0 AFL, 48.0 ALR

Product Number	Maximum Operating Temperature		Setpoint Temperature Range		Differential Temperature		Interstage Differential Temperature		Voltage	Output	Comments
	(F)	(C)	(F)	(C)	(F)	(C)	(F)	(C)			
T631A1006/U	120 F	49 C	35 F to 100 F	—	2 F	1.1 C	—	—	24 Vac or 120/240 Vac	1 SPDT	—
T631A1022/U	150 F	67 C	70 F to 140 F	—	2 F	1.1 C	—	—	24 Vac or 120/240 Vac	1 SPDT	—
T631A1030/U	125 F	52 C	0 F to 70 F	—	3 F	1.7 C	—	—	24 Vac or 120/240 Vac	1 SPDT	—
T631A1063/U	125 F	52 C	-10 F to +100 F	—	3 F	1.7 C	—	—	24 Vac or 120/240 Vac	1 SPDT	—
T631A1113/U	120 F	50 C	35 F to 100 F	—	3.5 F	1.9 C	—	—	120 Vac or 240 Vac	1 SPDT (1 hp at 0.7 kW)	—
T631A1154/U	120 F	50 C	—	0 C to 40 C	2 F	1.1 C	—	—	24 Vac or 120/240 Vac	1 SPDT	Celsius model
T631B1005/U	120 F	50 C	35 F to 100 F	—	2 F	1.1 C	3.5 F	1.9 C	120 Vac or 240 Vac	2 SPDT	—
T631B1054/U	120 F	50 C	35 F to 100 F	—	2 F	1.1 C	0 F to 7 F adjustable	0 C to 4 C adjustable	120 Vac or 240 Vac	2 SPDT (1 hp at 0.7 kW)	—
T631C1012/U	125 F	52 C	20 F to 90 F	—	3 F	1.7 C	—	—	120 Vac or 240 Vac	1 SPDT (1 hp at 0.7 kW)	—
T631C1020/U	150 F	67 C	70 F to 140 F	—	2 F	1.1 C	—	—	24 Vac or 120/240 Vac	1 SPDT	—
T631C1038/U	125 F	52 C	—	-10 C to +30 C	3 F	1.7 C	—	—	24 Vac or 120/240 Vac	1 SPDT	Celsius model
T631C1046/U	150 F	67 C	—	20 C to 60 C	2 F	1.1 C	—	—	24 Vac or 120/240 Vac	1 SPDT	Celsius model
T631C1053/U	120 F	49 C	35 F to 100 F	—	2 F	1.1 C	—	—	120 Vac or 240 Vac	1 SPDT	—
* T631C1103/U	125 F	52 C	-30 F to +100 F	—	5 F	2.8 C	—	—	24 Vac or 120/240 Vac	1 SPDT (1 hp at 0.7 kW)	—

* TRADELINE models • SUPER TRADELINE models