

**NEXTSPEED**  
**Category 5e Component**

**Angled Patch Panel**

**Features**

- 7 dB min NEXT Margin 1 -100 MHz over TIA and ISO Channel Specifications
- Qualified to 150% of 802.3bt PoE Current Level
- Continuous Third Party Verification Program

**Ordering Information**

Description	Color	Catalog Number	UPC
NEXTSPEED Category 5e Patch Panel, Angled, 48-Port, 2 Rack Unit	Black	HP5E48A	662620247137

**Listings**

TIA-568-C.2 Category 5e component  
ISO/IEC 11801/60603-7-41 5e component  
Third Party tested for TIA 568-C.2 requirements. Component/link/channel  
ISO/IEC 11801 Class D  
Mechanical: Verified to TIA-568-C.2  
UL Listed 1863, UL 94 V-0 Flammability Rating ISO9001-2008 manufacturing process

**Specifications**

Nose Contact	Beryllium copper with precious metal plating with nickel under-plating
Rear IDC Contact	Phosphor bronze with 100 micro-inch lead free tin plating over nickel under plating
Panel Material	14 ga. Steel rolled-edge construction
Dimensions (W x H) Inch (mm)	19 (483) x 3.50 (89)
Mounting	Dimensions and mounting holes per CEA-310-E

**Performance**

**Electrical**

NEXT margin over TIA 568-C.2 component at 100MHz  
Exceeds component requirements of TIA-568-C.2 Category 5e and ISO 11801 1-100MHz  
Designed and tested for 1.5A of continuous current per pair

**General Information**

Manufacturing: 100% factory tested  
Universal wiring (T568A or T568B)  
Integrated labeling and icon slots for 606-B compliance

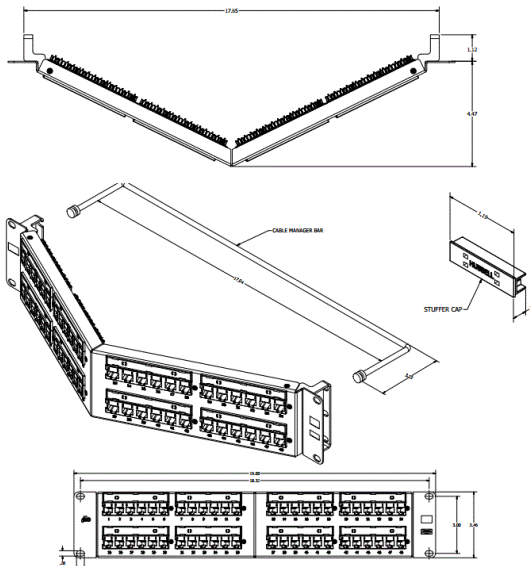
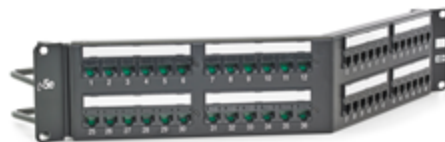
**Mechanical**

Mating Cycle: 2000+ with FCC 8-position plug

**Applications**

IEEE 802.3b 1000GBASE-T  
IEEE 802.3bt PoE+  
IEEE 802.3bt 4PPoE Power over Ethernet

**HUBBELL**



**Accessories**

Category 5e Component Jack	<b>HXJ5EB</b>
Category 5e Patch Cord	<b>HC5EB03</b>
Category 5E Panel Replacement Adaptor	<b>HP5EM6</b>
Category 5E UTP Cable	<b>C5ESRB</b>

**Online Resources**

Customer Use Drawing  
eCatalog