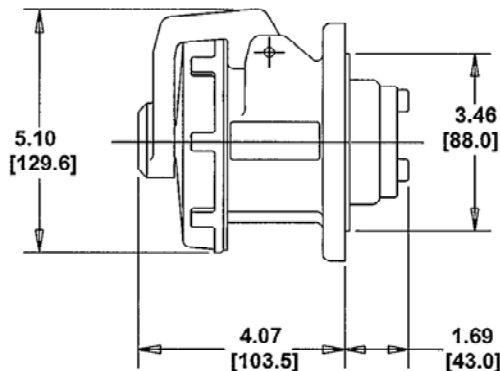
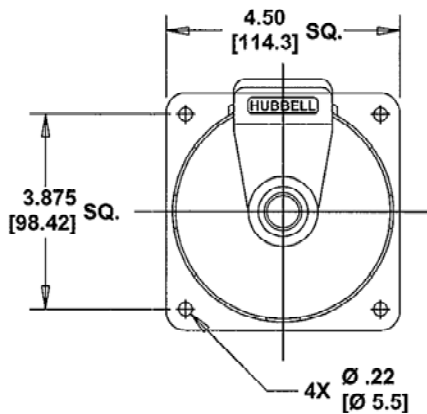


M-6093 8



CAT. NO.	CONFIGURATION	RATING	COMMENTS	HOUSING		CAT. NO.	CONFIGURATION	RATING	COMMENTS	HOUSING	
				MATERIAL	COLOR					MATERIAL	COLOR
HBL560B9R		60A 3ØY 120/208 VAC		NYLON	BLUE	HBL560R6W		60A 3ØY 200/346 VAC; 240/415 VAC		NYLON	RED
						HBL560R7W		60A 3ØY 277/480 VAC		NYLON	RED
						HBL560R9W		60A 3ØY 120/208 VAC		NYLON	BLUE
HBL560R5W		60A 3ØY 347/600 VAC		NYLON	BLACK						
HBL563R6W		63A 220/380VAC 240/415 VAC		NYLON	RED						
HBL560R6V02		60A 3ØY 200/346 VAC 240/415 VAC		VALOX	RED						

NOTES (UNLESS OTHERWISE SPECIFIED)

- 1) TOLERANCES ARE:
DECIMALS $\pm .03$
ANGLES $\pm 2^\circ$
- 2) DIMENSIONS ARE: INCHES
[MILLIMETERS]

LIST OF PARTS

DESCRIPTION	MATERIAL	FINISH
HOUSING	SEE TABLE	
INTERIOR	THERMOSET	
SLEEVES	BRASS	
SLEEVE INSERTS	BERR. COPPER / SILVER	
TERMINAL SCREWS	ST. STEEL	
COVER	POLYESTER	
COVER SCREW	BRASS	NICKEL
COVER SPRING	ST. STEEL	
GASKET	NEOPRENE	
DISC	POLYCARBONATE	
ARM	POLYESTER	
HINGE PIN	ST. STEEL	
HINGE SPRING	ST. STEEL	
ASSEMBLY SCREWS	ST. STEEL	

8	ADDED CAT. # HBL560R6V02 AND SPECS. TO TABLE. PER DCN 18699 DDL	CAC	04/24/12
7	ADDED "& IEC INLET REVERSE" TO TITLE; ADDED "HBL560B9R" TO TABLE PER DCN 17643 RCM	PJB	5/4/11
6	ADDED CAT # HBL560R6W TO TABLE PER DCN 17478. MYA	TLS	3/11/11
5	REDRAWN ON CAD WITH CHANGES. ADDED "HOUSING" & "COMMENTS" COLUMNS TO TABLE AND NOTES 1 & 2. IN TABLE, ADDED "240/415 VAC" TO HBL563R6W AND "A" WAS "AMP". IN LIST OF PARTS, "SEE TABLE" WAS "NYLON" AND "NEOPRENE WAS "RUBBER". .22 DIM. WAS 7/32; "Ø" WAS "DIA." AND "[XX.X]" WAS "MM". SUPERSEDES DRAWING DATED 4/28/80. PER DCN #12944 JMN	DJP	6/28/06

SYM	REVISIONS	APP	DATE
-----	-----------	-----	------

THE DESIGN AND DIMENSIONS OF THE PRODUCT SHOWN ON THIS DRAWING ARE SUBJECT TO CHANGE WITHOUT NOTICE

TITLE 60A & 63A 4 POLE 5 WIRE PIN AND SLEEVE RECEPTACLES & IEC INLET REVERSE

TOLERANCES UNLESS OTHERWISE SPECIFIED		WIRING DEVICE-KELLEMS HUBBELL INCORPORATED BRIDGEPORT, CT	
FRACTIONS	$\pm 1/64$	DR. BY	WTC
DECIMALS	$\pm .005$	APP. BY	DJP
ANGLES	$\pm 2^\circ$	TR. BY	JMN
		SCALE	NONE
		CHK'D BY	DJP
		DATE	6/28/06