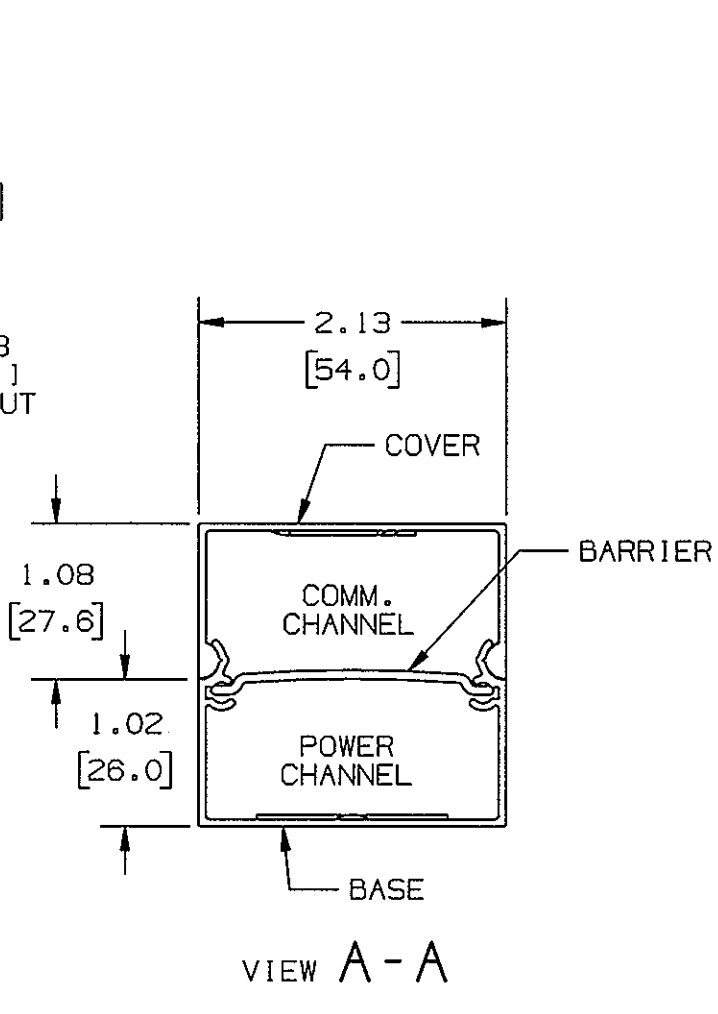
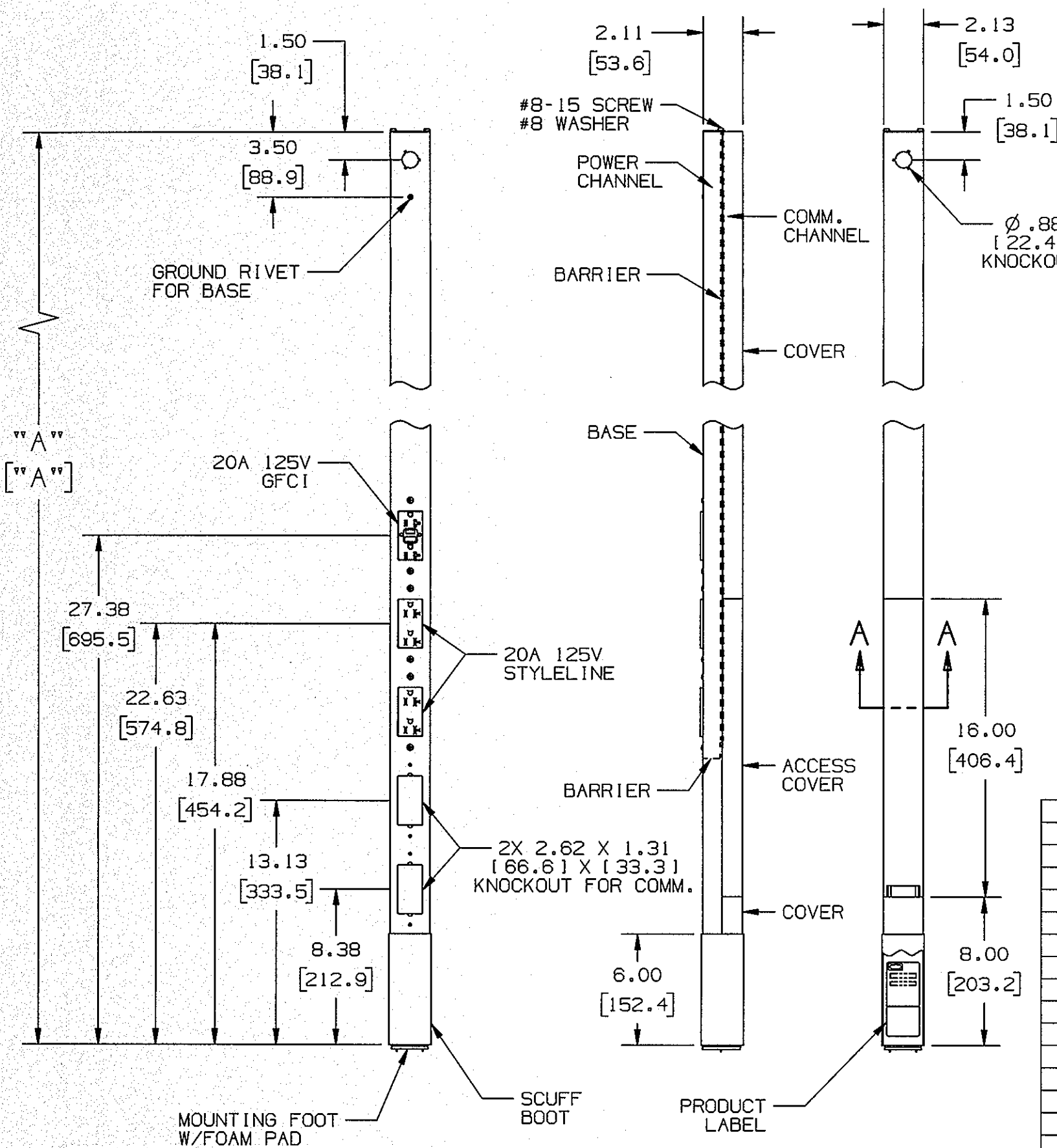


M-13110 1



NOTES:
1. DIMENSIONS ARE IN INCHES.
[mm]

| CATALOG NO. | COLOR | "A" |
|-------------|--------------------|----------------------|
| HBLPP10GF | GRAY | 122.00 [3098.8] |
| HBLPP10GFAL | SATIN FINISH ALUM. | |
| HBLPP10GFBK | BLACK | |
| HBLPP10GFI | IVORY | |
| HBLPP10GFOW | OFFICE WHITE | |
| HBLPP10GFW | WHITE | 146.00 [3708.4] |
| HBLPP12GF | GRAY | |
| HBLPP12GFAL | SATIN FINISH ALUM. | |
| HBLPP12GFBK | BLACK | |
| HBLPP12GFI | IVORY | |
| HBLPP12GFOW | OFFICE WHITE | 182.00 [4622.8] |
| HBLPP12GFW | WHITE | |
| HBLPP15GF | GRAY | |
| HBLPP15GFAL | SATIN FINISH ALUM. | |
| HBLPP15GFBK | BLACK | |
| HBLPP15GFI | IVORY | |
| HBLPP15GFOW | OFFICE WHITE | |
| HBLPP15GFW | WHITE | |

| DESCRIPTION | MATERIAL | FINISH |
|-------------|----------|--------|
| | | |
| | | |
| | | |
| | | |
| | | |
| | | |
| | | |
| | | |
| | | |
| | | |
| | | |
| | | |
| | | |
| | | |
| | | |
| | | |
| | | |
| | | |
| | | |
| | | |

| SYMBOL | REVISIONS | APP | DATE |
|--------|-------------------------------|-----|----------|
| 1 | INITIAL RELEASE PER DCN 21632 | DDL | 09/02/15 |
| | | | |
| | | | |
| | | | |
| | | | |
| | | | |
| | | | |
| | | | |
| | | | |
| | | | |

THE DESIGN AND DIMENSIONS OF THE PRODUCT SHOWN ON THIS DRAWING ARE SUBJECT TO CHANGE WITHOUT NOTICE

TITLE
1 GFCI, 2 STYLELINE SERVICE POLE

| | | |
|---|--|---------------|
| TOLERANCES UNLESS OTHERWISE SPECIFIED .XX = ±.01 .XXX = ±.005 ANGLES = ±2° | WIRING DEVICE-KELLEMS HUBBELL INCORPORATED SHELTON, CT | |
| | DR. BY DDL | APP. BY |
| | TR. BY | SCALE NONE |
| | CHK. BY | DATE 09/02/15 |

DIMENSION SHEET FOR CAT. NO. M-13110
 SEE TABLE
 REPAIRABLE NON-REPAIRABLE
 B
 M-13110
 1