

## Ground Fault Products

### 20A, 125V

#### Circuit Guard® GFCI Receptacles

# HUBBELL

#### Features

- Ground fault EOL indicator
- Comprehensive diagnostics
- No power at face if reverse wired
- Automatic self-grounding staple makes installation ease

#### Ordering Information

Description	Device Color	UPC	Catalog Number
Flush, nylon face, back	Brown	883778379093	GF20LA

#### Listings

Meets UL498 for receptacles  
UL943 Class A for GFCIs UL File E41978  
CSA Certified

#### Specifications

Trip Level	4 to 6 mA
Trip Time	.025 second nominal
Frequency	60 Hz
Codes	Meets all NEC® and CEC requirements

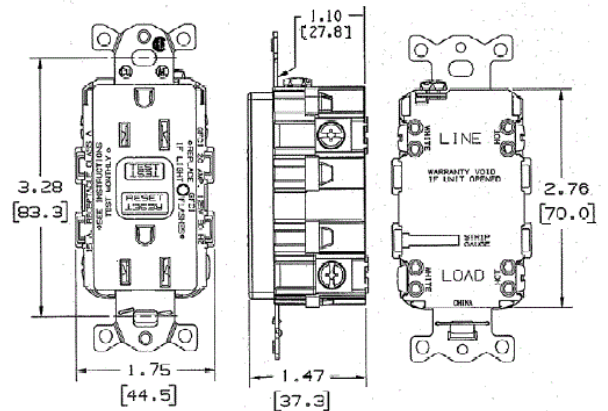
#### Performance

##### Electrical

Amperage	15A/20A, 20A Feed Thru
Max. Interrupting Capacity	10,000A
Voltage	120V AC +10% - 15% (102V to 132V)

##### Environmental

Maximum Humidity	0.95
Operating Temperature	-35°C to 66°C or -30°F to 150°F.



#### Online Resources

Customer Use Drawing  
eCatalog  
Installation Instructions

Dimensions in Inches (mm)

Specifications subject to change without notice.

