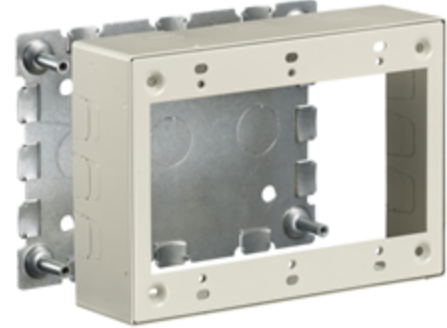


Raceway Metal Raceway 3-Gang Standard Box

HUBBELL

Features

- For use with HBL500, HBL700 and HBL750 Series Raceway
- Hubbell Handi-Screw® eases installation by eliminating difficult to install long screws
- Rounded corners with no sharp edges
- One seam construction provides a “clean” look
- Box design allows standard wallplates to be mounted flush with virtually no perimeter profile exposed



Ordering Information

Description	Color	UPC Number	Catalog Number
3-Gang Standard Box	Ivory	783585423555	HBL57483IVA

Listings

UL Listed
CSA Certified

Specifications

Height	4.54"
Width	6.45"
Length	1.75"

Dimensions in Inches (mm)

Specifications subject to change without notice.

Online Resources

eCatalog

