

Switched Disconnects and Enclosures

Circuit-Lock® 30A Disconnects with LED Indicators

Suitable as Motor Disconnects

Features

- Six highly visible integral phase identification LEDs for use on 3 Phase Y system
- LEDs provide secondary means of visual confirmation of make/break on all phases
- Cover cannot be removed with switch in the “ON” position
- Verification of opening of load side contacts
- Highly visible red handle can be locked in the OFF position as a method of compliance with OSHA Lockout/Tagout requirements

Ordering Information

Description	UPC Number	Catalog Number
Disconnect switch with LEDs, Non Metallic	783585365107	HBLDS3P

Listings

cULus Listed
NSF Certified and IP69K Rating

Specifications

Base and Top	PBT
Handle	PBT
Conduit Hub	¾ in. Zinc
Enclosure Gasket	Neoprene
Frame	Galvanized Steel
Enclosure Screws	Stainless Steel 300 Series
Shaft (Unfused)	PBT
Shaft Seal	Molded Neoprene

Performance

Electrical	
Current Interrupting	Certified for current interrupting at full rated current and voltage
Dielectric Voltage	Withstands 3000V AC minimum
Max. Working Voltage	600V AC RMS
Short Circuit Current Ratings (SCCR): (Motor Disconnect)	Suitable for use on a circuit capable of delivering not more than 65kA RMS symmetrical, 600V AC max. when protected by Class J fuses rated 30A max.

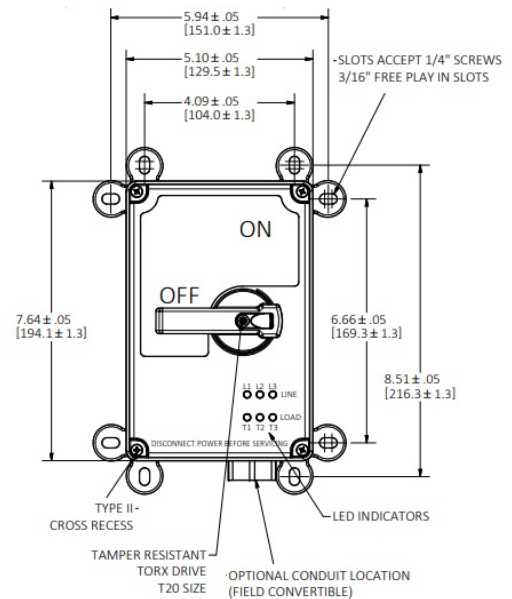
Mechanical

Impact Resistance	In accordance with UL 746C
Mounting	External fully adjustable feet
Terminal Identification	In accordance with UL, CSA and international conventions

Environmental

Flammability	UL94-5VA and V0 Classification
Moisture Resistance	Indoor and Outdoor – Type 4X (Wash down, Corrosion resistant); Indoor – Type 12 (Dust-tight, Falling Dirt, Noncorrosive Liquids).
Operating Temperature	Max. Continuous: 75°C; Min. Continuous: -40°C without impact
UV Resistance	All materials are UV stabilized

HUBBELL



Complementary Products

Replacement Cover	HBLDS3RCP
Replacement Ground Block	HBL30RGB
Replacement Neutral Block	HBL30RNB
Replacement Switches	HBLDS3RS
Replacement Mounting Feet	HBLRFT1

Online Resources

Customer Use Drawing
eCatalog
Installation Instructions

Dimensions in Inches (mm)

Specifications subject to change without notice.

