

Sensing Devices

Passive Infrared

Wall Switch Sensors



Features

- Designed for use on 120 AC circuits, no neutral required, fast retrofits
- Manual adjusting, auto ON operation
- Wallplate sold separately

Ordering Information

Description	UPC Number	Catalog Number
Manual adjusting, auto ON operation; 120V AC only	783585428086	WS1020W

Listings

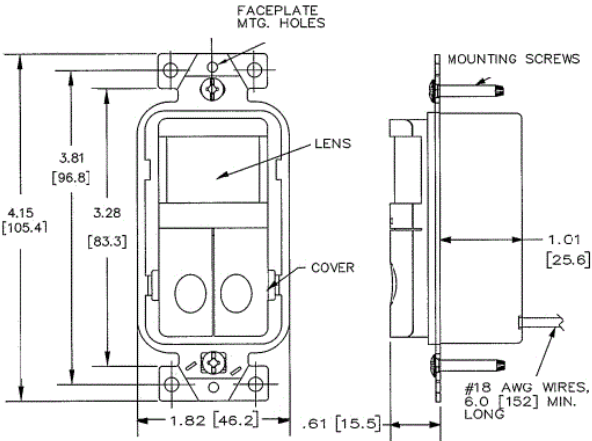
cULus listed to UL 773A

Specifications

Housing	Flame retardant UL 94 V-0 ABS
Lens	Polyethylene
Dimensions	Face 2.59"H x 1.30"W, 0.61"D (from wall out)
Mounting Height	46 to 54 inches above floor
Mounting Strap	Steel

Performance

<b>Controls</b>	
Front Press Switch	ON/OFF
Service Switch	OFF (service); ON (normal operation)
Time Delay	6 seconds to 20 minutes (default set to 10 minutes)
<b>Electrical</b>	
Load Capacity	120VAC, 600W Incandescent, 5A Ballast, 5A CFL/LED, 277V; Horsepower rating 1/6
<b>Environmental</b>	
Operating Temperature	32°F to 122°F (0°C to 50°C) with rate of change not exceeding 20°F(11°C) per hour
Storage	-40°F to 150°F (-40°C to 65°C); 20% to 90% non condensing relative humidity
<b>Sensing Indicators</b>	
Passive Infrared	Red LED



Complementary Products

Nylon Wallplate	NP26W
SS Wallplate	SS26
Snap-On Wallplate	NPS26W

Online Resources

eCatalog

Dimensions in Inches (mm)

Specifications subject to change without notice.

