

Model 12 & 13

Current Transformer Window Diameter 0.37" & 0.56"

Application

For current to voltage conversion by use of a loading resistor.

These two lightweight, miniature current transformer are suitable for direct mounting on printed circuit boards. Model 13 is provided with standard hexagon nuts, to secure the transformer to a printed circuit board so that the assembly can withstand vibration and shock.

Frequency

50-400 Hz.

Insulation Level

600 Volt, 10 kV BIL full wave.

Continuous Thermal Current Rating Factor

Models 12:
100 A @ 30 °C amb.,
80 A at 55 °C amb.

Models 13:
200 A at 30 °C amb.,
120 A at 55 °C amb

Approximate weight 0.1 - 0.2 lbs



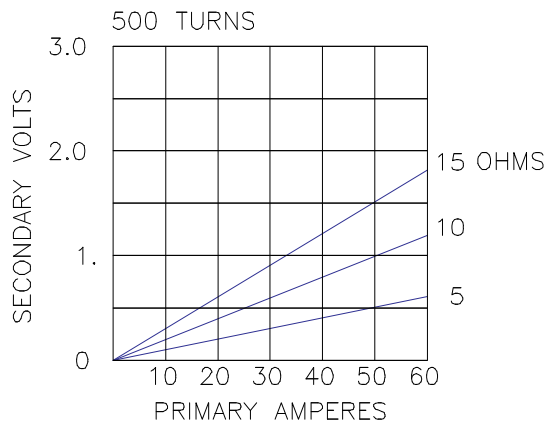
Data Table: Models 12 & 13

Catalog Number	Turns
12-500T	500
12-1000T	1,000
12-1050T	1,050
13-200T	200
13-400T	400
13-1000T	1,000
13-2000T	2,000
13-3000T	3,000

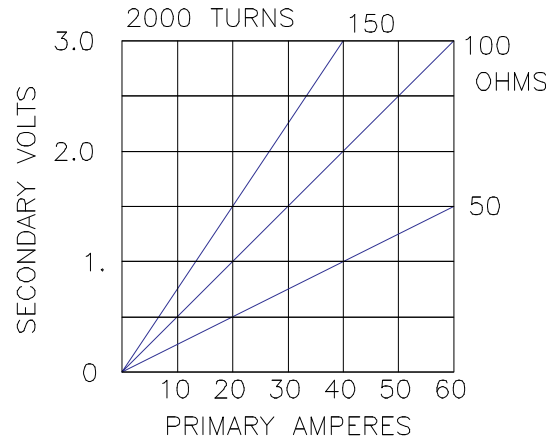


Model 12 & Model 13

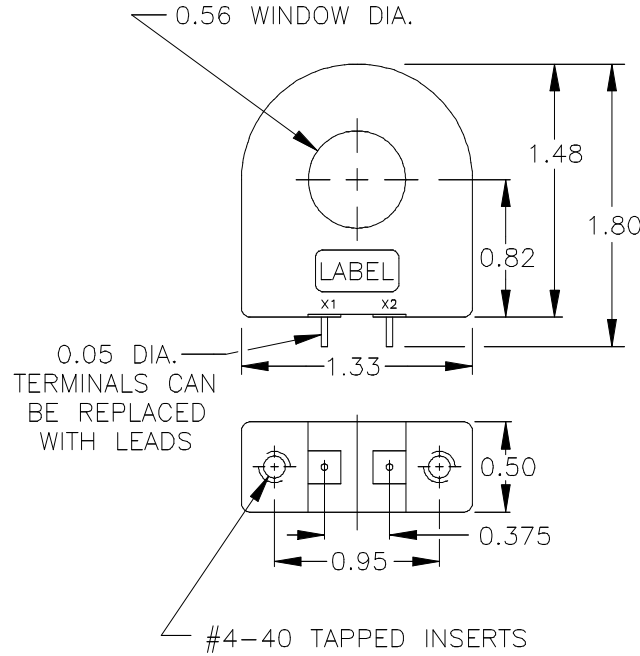
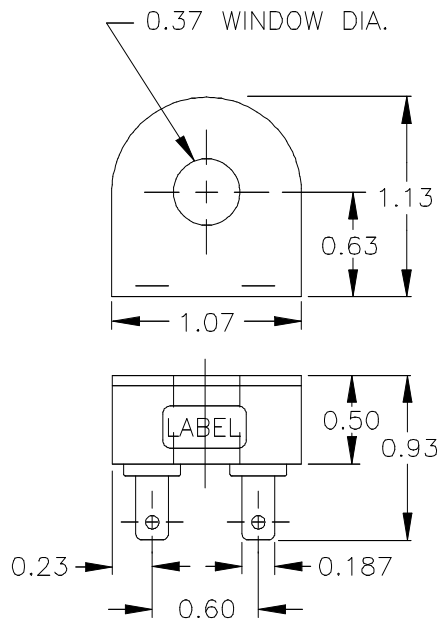
Model 12



Model 13



The graphs above illustrate the voltage output capacity of each for $\pm 3\%$ linearity.



Grid-AIS-L4-ITI_Model_12_13-1543-2017_05-EN. © Copyright 2017, General Electric Company and Instrument Transformers LLC reserve the right to change specifications of described products at any time without notice and without obligation to notify any person of such changes.

