

Model 3VT468

3 Phase Voltage Transformer

Frequency

60 Hz.

Standard Secondary Voltage

120 Volts

Insulation Level

600 Volt, 10 kV BIL full wave.

Accuracy Class: (Per Phase)

± 0.6% @ 7.5 VA

Thermal Rating: (Per Phase)

75 VA at 30 °C. amb., 50 VA at 55 °C. amb.

Terminals are brass screws No. 8-32 with one lockwasher and flatwasher.

Approximate weight 8 lbs.



Clear Plastic Cover

REGULATORY AGENCY APPROVALS



Manufactured to meet the requirements of ANSI/IEEE C57.13.
Classified by U.L. in accordance with IEC 44-1

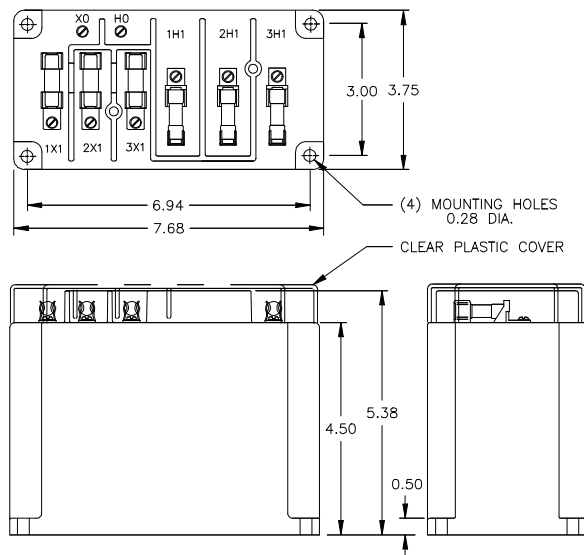
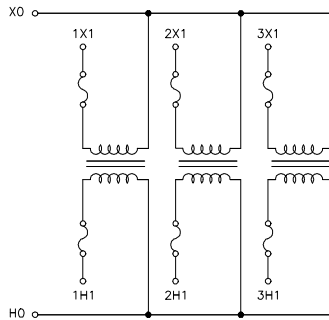
Model 3VT468

Not Fused	Catalog Number		Line/Neutral Voltage Rating	Turns Ratio	Rec. Primary Fuse Rating
	Primary Fuses Only	Primary and Secondary Fuses			
3VT468-069	3VT468-069F	3VT468-069FF	69.3:120	0.58:1	3.0
3VT468-120	3VT468-120F	3VT468-120FF	120:120	1:1	2.0
3VT468-208	3VT468-208F	3VT468-208FF	208:120	1.73:1	1.0
3VT468-240	3VT468-240F	3VT468-240FF	240:120	2:1	1.0
3VT468-277	3VT468-277F	3VT468-277FF	277:120	2.31:1	1.0
3VT468-288	3VT468-288F	3VT468-288FF	288:120	2.4:1	0.75
3VT468-300	3VT468-300F	3VT468-300FF	300:120	2.5:1	0.75
3VT468-346	3VT468-346F	3VT468-346FF	346:120	2.88:1	0.75



Model 3V Model 3VT468

- The core and coil assembly is encased in a thermoplastic shell and filled with resin.
- These transformers are designed for application to Y connected systems.
- Only ground XO/HO terminals if source is 3 phase, 4 wire effectively grounded.
- Primary fuses are type CC rejection style.
- It is desirable to use a 0.80 amp BBS type or equal fuse in the secondary to protect the transformer.
- Models designed specifically for 50 Hz operation are available with reduced performance. Consult factory for details.
- Supplied with a clear plastic cover.



Grid-AIS-L4-ITL_Model_3VT468-1568-2017_05-EN. © Copyright 2017. General Electric Company and Instrument Transformers LLC reserve the right to change specifications of described products at any time without notice and without obligation to notify any person of such changes.

