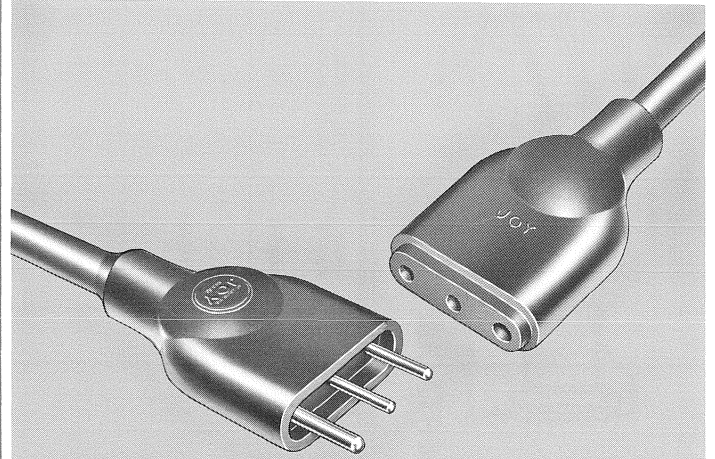
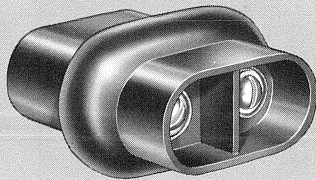


Joy Oval Connectors suited for most power applications

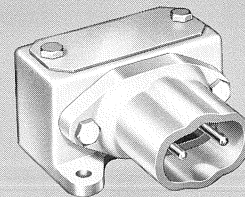
The oval connector is available in a number of combinations so that it may be adapted to almost any requirement. In addition to mating plugs, and plugs with safety chains, receptacles are available with covers and with a wiring box.



Male and female plugs molded to standard lengths of cable can be used together or with receptacles.

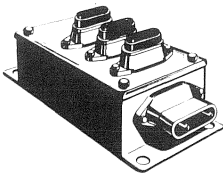


An insulated terminal back arrangement simplifies wiring.

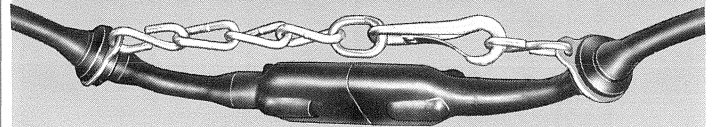


If required, a wiring box is available which provides for side or top mounting of the receptacle and an additional provision of a 15° angle adapter.

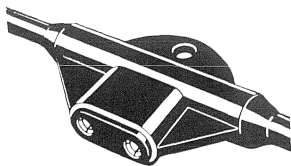
Special variations utilizing the Oval design are also available on special order



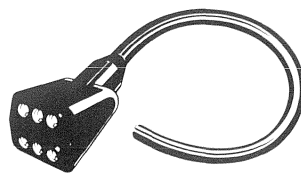
Gang Boxes JOY gangs are excellent for distributing electrical power to a variety of equipment from a single feeder. Consisting of sturdy, dust-proof metal boxes on which JOY receptacles are permanently mounted, they're available in all six general styles.



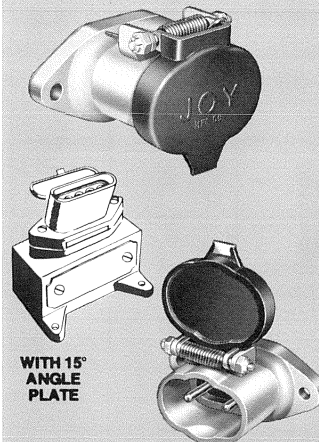
Cadmium plated steel safety chains with end snaps prevent accidental disconnects.



Side Outlets Easily installed, safe to use factory molded strings of electrical outlets spaced into size 14, 12, or 10, 2- or 3-conductor cord. Lead lengths and outlet spacing to users' specifications.

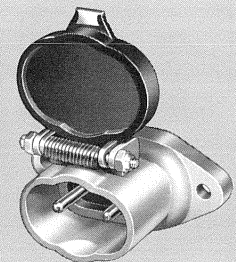


Branches JOY branches are dependable, long-lasting and easy to handle, multiple electrical outlets . . . factory molded to cable as one-piece neoprene insulated units.



WITH 15° ANGLE PLATE

Receptacles are furnished with spring-loaded sealing covers.



Sturdy heavy-duty castings provide a convenient mounting arrangement for male and female receptacles.