

Agricultural Duty Motors - General Purpose & Definite Purpose



- Gasketed capacitor cases and conduit box covers
- Meets or exceeds NEMA service factors
- Single phase and three phase designs
- Double sealed ball bearings
- Double shielded ball bearings on Ag fan motors
- Condensate drains on general purpose Ag motors
- Low temperature manual overload protected
- High and extra high starting torque ratings
- UL recognized component listing and CSA certified
- 1-year warranty

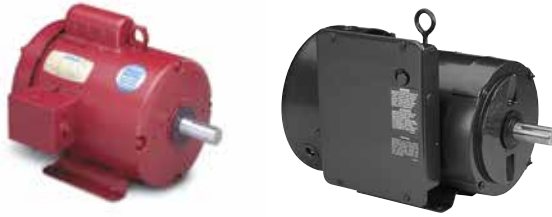
Applications:

For use where exposure to water, dust and dirt exists. Ideally suited for use Farm / Ag equipment such as feeders, conveyors, fans, grain elevators, silo unloaders, and other demanding farm duty equipment.



Agricultural Duty Motors

High Torque - General Purpose



Single Phase - TEFC - Rigid Base

HP	SYN RPM 60 Hz	NEMA Frame	▼ Catalog Number	Stock	Model Number	App. Wgt. (lbs)	Voltage	Over-load Prot.	F. L. Amps @ 230 V	Service Factor	"C" Dim. (Inches)	♥Notes
1/3	1800	56	113256.00	✓	M6C17FB66	20	115/208-230	Man.	3.2	1.15	10.81	S, US,
	1800	56	LM24789	✓	SRF4S0.33T1C6028AP7TP1	24	115/208-230	Man.	3.3	1.15	12.82	S, MX
1/2	1800	56	110086.00	✓	M6C17FB11	22	115/208-230	Man.	4.4	1.15	10.81	S, US,
	1800	56	LM24790	✓	SRF4S0.5T1C6028AP7TP1	25	115/208-230	Man.	4.4	1.15	11.82	S, MX
3/4	1800	56	110087.00	✓	M6C17FB9	26	115/208-230	Man.	5.4	1.15	11.31	S, US,
	1800	56	LM24791	✓	SRF4S0.75T1C6028AP7TP1	30	115/208-230	Man.	5.5	1.15	12.32	S, MX
1	1800	56	110088.00	✓	M6C17FB10	30	115/208-230	Man.	7.0	1.15	11.81	S, US,
	1800	56	LM24792	✓	SRF4S1T1C6028AP7TP1	32	115/208-230	Man.	6.7	1.15	12.82	S, MX
	1800	143T	121569.00	✓	M143C17FB13	30	115/208-230	Man.	7.0	1.15	12.75	S, US,
	1800	143T	LM24793	✓	SSF4S1T1C6028AP7TP1	35	115/208-230	Man.	6.7	1.15	12.87	S, MX
1 1/2	1800	56H	110089.00	✓	M6K17FB3	41	115/208-230	Man.	8.6	1.15	12.61	S, US,
	1800	56H	LM24794	✓	SRF4S1.5T1B6028AP7TP1	41	115/208-230	Man.	7.6	1.15	13.82	S, MX
	1800	56HZ	113938.00	✓	M6K17FB39	39	115/208-230	Man.	8.6	1.15	13.25	S, US, 3, 53
	1800	145T	LM24795	✓	SSF4S1.5T1B6028AP7TP1	42	115/208-230	Man.	7.6	1.15	13.87	S, MX
2	1800	56HZ	110090.00	✓	M6K17FB4	43	230	Man.	9.2	1.15	13.75	S, US, 3, 53
	1800	182T	131541.00	✓	P182C17FB12	50	115/208-230	Man.	12.4	1.15	14.46	S, MX
3	1800	184T	131542.00	✓	P184C17FB13	83	230	Man.	19.0	1.15	16.46	S, MX
	1800	184T	LM24797	✓	SS184F4S3T1C66AP7TP1	92	230	Man.	19.0	1.15	16.46	S, MX
5	1800	184T	131543.00	✓	P184K17FB16	96	230	Man.	20.5	1.15	17.46	S, MX, 53
	1800	184T	LM24798	✓	SSF4S5T1B66AP71TP1	90	230	Man.	20.5	1.15	17.46	S, MX, 53
7 1/2	1800	215T	140707.00	✓	P215K17FB15	144	230	Man.	32.0	1.15	20.21	S, MX, 53
	1800	215T	LM24799	✓	SS215F4S7.5T1B66AP7TP1	130	230	Man.	30.0	1.15	21.09	S, MX, 53
10	1800	215T	140706.00	✓	P215K17FB16	152	230	Man.	40.0	1.15	20.71	S, MX, 53

▼ LM Numbers are Lincoln Models

♥ Note listing on inside back flap

Specifications are subject to change without notice



Explosion Proof Motors

Automotive Duty Motors

Pump Motors

Washguard Motors

Agricultural Motors

HVAC / Fan Motors

Special Voltage Motors

Definite Purpose Motors

Brake Motors

Agricultural Duty Motors

ECO-Ag - Premium Efficient Farm Duty Motors

Features:

- Up-to 22% higher efficiency than standard Ag Motors
- Sealed bearings
- Shaft flinger - output shaft
- High starting torque
- Manual overload protected
- Weep holes provide condensation drains



Single Phase - TEFC - Rigid Base

HP	RPM 60 Hz	NEMA Frame	Catalog Number	Stock
1/3	1800	56	117689.00	✓
1/2	1800	56	117690.00	✓
3/4	1800	56	117691.00	✓
1	1800	56	117692.00	✓
	1800	143T	121973.00	✓
1 1/2	1800	56H	117693.00	✓
	1800	145T	121974.00	✓
2	1800	145T	121975.00	✓

Model Number	App. Wgt. (lbs)	Voltage	Over-load Prot.	F. L. Amps @ 230 V	% F.L. Eff.	Service Factor	"C" Dim. (Inches)	♥Notes
M6K17FB56	27	115/208-230	Man.	1.7	76.0	1.15	10.99	S, US, 53
M6K17FB57	30	115/208-230	Man.	2.5	78.0	1.15	11.49	S, US, 53
M6K17FB60	35	115/208-230	Man.	3.2	82.0	1.15	11.99	S, US, 53
M6K17FB58	37	115/208-230	Man.	4.2	83.0	1.15	12.49	S, US, 53
M143K17FB3	38	115/208-230	Man.	4.2	83.0	1.15	12.93	S, US, 53
M6K17FB59	43	115/208-230	Man.	6.5	84.0	1.15	13.49	S, US, 53
M143K17FB4	44	115/208-230	Man.	6.5	84.0	1.15	13.93	S, US, 53
M145K17FB29	49	230	Man.	8.2	85.0	1.15	14.43	S, US, 53

Green items are Premium Efficient

♥ Note listing on inside back flap

Specifications are subject to change without notice

Three Phase Ag Duty Motors - Eco-Ag Designs

Features:

- Premium efficient designs
- Double sealed ball bearings
- Shaft flinger - output shaft
- Normally closed thermostat protected
- Weep holes provide condensation drains



Three Phase - TEFC - Rigid Base

HP	RPM 60 Hz	NEMA Frame	Catalog Number	Stock
1/2	1800	56	117772.00	✓
3/4	1800	56	117759.00	✓
1	1800	56	117760.00	✓
1 1/2	1800	56H	117761.00	✓
1 1/2	1800	145T	121997.00	✓
2	1800	145T	121998.00	✓
3	1800	184T	132328.00	✓
5	1800	184T	132329.00	✓
7 1/2	1800	213T	141145.00	✓
10	1800	215T	141146.00	✓

Model Number	App. Wgt. (lbs)	Voltage	Over-load Prot.	F. L. Amps @ 230 V	% F.L. Eff.	Service Factor	"C" Dim. (Inches)	♥Notes
C6T17FB163	30	208-230/460	T-stat	1.8	77.0	1.15	11.31	S, US
C6T17FB160	31	208-230/460	T-stat	2.4	81.5	1.15	11.31	S, US
C6T17FB161	32	208-230/460	T-stat	3.2	85.5	1.15	12.81	S, US
C6T17FB162	34	208-230/460	T-stat	4.8	86.5	1.15	13.31	S, US
C145T17FB98	35	208-230/460	T-stat	4.8	86.5	1.15	13.75	S, US
C145T17FB99	45	208-230/460	T-stat	5.8	86.5	1.15	14.76	S, US
C182T17FB54	80	208-230/460	T-stat	7.8	89.5	1.15	14.96	S, MX
C184T17FB67	94	208-230/460	T-stat	12.8	89.5	1.15	15.96	S, MX
C213T17FB22	144	208-230/460	T-stat	21.4	91.7	1.15	18.70	S, MX
C215T17FB23	161	208-230/460	T-stat	29.0	91.7	1.15	19.70	S, MX

Green items are Premium Efficient

♥ Note listing on inside back flap

Specifications are subject to change without notice

Agricultural Duty Motors Hi-Torque and Extra Hi-Torque



Single Phase - TEFC - Extra Hi-Torque - Rigid Base

HP	SYN RPM 60 Hz	NEMA Frame	▼ Catalog Number	Stock
2	1800	182T	131541.00	✓
3	1800	184T	131542.00	✓
5	1800	184T	LM24802	✓
	1800	213TZ	LM24803	✓
	1800	215T	140203.00	✓
7 1/2	1800	215TZ	140223.00	✓
	1800	215T	140130.00	✓
	1800	215TZ	140209.00	✓
10	1800	215TZ	LM24804	✓
	1800	215T	140414.00	✓
	1800	215T	LM24805	✓

Model Number	App. Wgt. (lbs)	Voltage	Over-load Prot.	F. L. Amps @ 230 V	Service Factor	"C" Dim. (Inches)	♥ Notes
P182C17FB12	50	115/208-230	Man.	12.4	1.15	14.46	S, MX
P184C17FB13	83	230	Man.	19.0	1.15	16.46	S, MX
SSF4S5TB6008AP8TP1	125	208-230	Man.	22.5	1.15	17.36	S, MX
SS213F4S5TZB66AP8TP1-1	126	230	Man.	22.6	1.15	18.34	S, MX, 53
P215K17FB3	119	230	Man.	24.0	1.15	18.71	S, MX, 53
P215K17FB5	150	230	Man.	24.0	1.15	18.71	S, MX, 4, 53
P215K17FB2	144	230	Man.	33.6	1.15	20.21	S, MX, 53
P215K17FB4	141	230	Man.	33.6	1.15	20.21	S, MX, 4, 53
SS215F4S7.5TZ1B66AP8TP1-1	125	230	Man.	30.5	1.15	21.09	S, MX, 53
P215K17FB6	156	230	Man.	40.0	1.15	20.71	S, MX, 53
SSF4S10T1B66AP8TP1	150	230	Man.	30.5	1.00	21.09	S, MX, 53

▼ LM Numbers are Lincoln Models

♥ Note listing on inside back flap

Specifications are subject to change without notice

Single Phase - TEFC - High Torque - C Face Less Base

HP	SYN RPM 60 Hz	NEMA Frame	Catalog Number	Stock
1/3	1800	56C	113290.00	✓
1/2	1800	56C	110492.00	✓
3/4	1800	56C	110493.00	✓
1	1800	56C	110494.00	✓
1 1/2	1800	56C	110495.00	✓
2	1800	145TC	120855.00	✓
3	1800	184TC	131603.00	✓
5	1800	184TC	131602.00	✓

Model Number	App. Wgt. (lbs)	Voltage	Over-load Prot.	F. L. Amps @ 230 V	Service Factor	"C" Dim. (Inches)	♥ Notes
M6C17FC59	28	115/208-230	Man.	3.2	1.15	10.81	S, US,
M6C17FC12	22	115/208-230	Man.	4.4	1.15	10.81	S, US,
M6C17FC13	29	115/208-230	Man.	5.4	1.15	11.31	S, US,
M6C17FC14	33	115/208-230	Man.	7.0	1.15	11.81	S, US,
M6K17FC3	43	115/208-230	Man.	8.6	1.15	12.31	S, US, 53
M145K17FC13	45	230	Man.	9.2	1.15	13.75	S, US, 53
P184C17FC5	104	230	Man.	19.0	1.15	16.47	S, MX,
P184K17FC7	104	230	Man.	20.5	1.15	17.47	S, MX, 53

Specifications are subject to change without notice

♥ Note listing on inside back flap

Single Phase - TEFC - High Torque - C Face With Base

HP	SYN RPM 60 Hz	NEMA Frame	Catalog Number	Stock
1/3	1800	56C	116485.00	✓
1/2	1800	56C	116486.00	✓
3/4	1800	56C	116487.00	✓
1	1800	56C	116488.00	✓
1 1/2	1800	56HC	116489.00	✓
2	1800	145TC	121625.00	✓
3	1800	184TC	131994.00	✓
5	1800	184TC	131995.00	✓

Model Number	App. Wgt. (lbs)	Voltage	Over-load Prot.	F. L. Amps @ 230 V	Service Factor	"C" Dim. (Inches)	♥ Notes
M6C17FK81	29	115/208-230	Man.	3.2	1.15	10.81	S, US,
M6C17FK80	23	115/208-230	Man.	4.4	1.15	10.81	S, US,
M6C17FK79	30	115/208-230	Man.	5.4	1.15	11.31	S, US,
M6C17FK78	34	115/208-230	Man.	7.0	1.15	11.81	S, US,
M6K17FK47	44	115/208-230	Man.	8.6	1.15	12.81	S, US, 53
M145K17FK11	46	230	Man.	9.2	1.15	13.75	S, US, 53
P184C17FK10	105	230	Man.	19.0	1.15	16.47	S, MX,
P184K17FK13	105	230	Man.	20.5	1.15	17.47	S, MX, 53

Specifications are subject to change without notice

♥ Note listing on inside back flap



Explosion Proof Motors

Automotive Duty Motors

Pump Motors

Washguard Motors

Agricultural Motors

HVAC / Fan Motors

Special Voltage Motors

Definite Purpose Motors

Brake Motors

Agricultural Duty Motors

Fan Duty - Single and Three Phase

Two-Winding Variable Torque PSC Type For Shaft Mounted Fan Application

Features:

- PSC designs offer low in-rush current
- Two speed operation - most ratings
- Automatic overload protected
- Resilient mount for quiet operation
- Corrosion resistant finish



Single Phase - TEAO - Resilient Base - PSC Type

HP	RPM 60 Hz	NEMA Frame	Catalog Number	Stock
1/4	1625	48Z	100803.00	✓
	1075	48Z	100824.00	✓
	1075	S56Z	100805.00	✓
1/3	1625	48Z	100804.00	✓
	1625	S56H	100767.00	✓
	1625	56HY	111348.00	✓
	1075	48Z	100825.00	✓
	1075	S56HZ	100806.00	✓
1/2	1625	56HZ	111323.00	✓
	1625	S56H	100768.00	✓
	1075	48Z	101645.00	✓
	1075	56HZ	111321.00	✓
	850	48YZ	M099836.00	D
	850	48YZ	A099836.00	✓
	825	56HZ	111919.00	✓
3/4	1625	56HZ	111324.00	✓
	1625	56H	111266.00	✓
	1075	56HZ	111322.00	✓
1	1625	56HZ	111267.00	✓

Model Number	App. Wgt. (lbs)	Voltage	Over- load Prot.	F. L. Amps @ 230 V	Service Factor	"C" Dim. (Inches)	♥Notes
A4P17NR1	19	115/230	Auto.	1.4	1.00	10.66	S, MX, 16, 34
A4P11NR2	20	115/230	Auto.	1.4	1.00	10.66	S, MX, 16, 34
A4P11NJ1	22	115/230	Auto.	1.4	1.00	11.06	S, MX, 17, 34
A4P17NR2	21	115/230	Auto.	1.6	1.00	10.66	S, MX, 16, 34
A4P17NJ1	22	115/230	Auto.	1.6	1.00	10.31	S, MX, 34
A6P17NZ6	24	115/230	Auto.	1.7	1.00	13.44	S, US, 59
A4P11NR3	25	115/230	Auto.	1.8	1.00	11.16	S, MX, 16, 34
A4P11NJ2	27	115/230	Auto.	1.8	1.00	11.56	S, MX, 17, 34
A6P17NR3	30	115/230	Auto.	2.6	1.00	12.56	S, US, 17, 34
A4P17NJ2	36	115/230	Auto.	2.2	1.00	10.81	S, MX, 34
A4P11NR6	33	115/230	Auto.	2.8	1.00	11.16	S, MX, 16, 34
A6P11NR1	37	115/230	Auto.	3.0	1.00	13.56	S, US, 17, 34
A4P8NR1	24	115/230	Auto.	3.0	1.00	11.55	S, CN, 19, 34, 50
A48P8NR2	24	115/230	Auto.	3.0	1.00	11.55	S, MX, 19, 34, 50
A6P8NR2	40	115/230	Auto.	3.2	1.00	13.56	S, US, 17, 34, 50
A6P17NR4	34	115/230	Auto.	3.5	1.00	13.06	S, US, 17
A6P17NR1	36	115/230	Auto.	3.5	1.00	12.31	S, US
A6P11NR2	44	115/230	Auto.	4.0	1.00	13.56	S, US, 17, 50
A6P17NR2	39	115/230	Auto.	4.4	1.00	12.81	S, US

D - Item to be discontinued once inventory is depleted

♥ Note listing on inside back flap

Specifications are subject to change without notice

Single Phase - TEAO - Rigid Base - PSC Type

HP	RPM 60 Hz	NEMA Frame	Catalog Number	Stock
1/4	1750	48Y	101252.00	✓
	1625	48Y	100699.00	✓
	1650	48Y	M099799.00	D
	1075	48Y	M099260.00	D
	1075	48Y	A099260.00	✓
1/3	1725	48Y	M090253.00	D
	1750	48Y	101253.00	✓
	1625	48Y	100700.00	✓
	1625	48Y	M099800.00	D
	1625	56Y	111202.00	C/A
	1140	S56Y	100604.00	✓
	1075	48Y	M099261.00	D
1/2	1075	48Y	A099261.00	✓
	1750	S56Y	101176.00	✓
	1750	48Y	100701.00	✓
	1625	48Y	M099801.00	D
	1060	48Y	M099946.00	D
	1075	48Y	A099946.00	✓
	3/4	1075	48Y	M099847.00
1075		56HZ	A099847.00	✓

Model Number	App. Wgt. (lbs)	Voltage	Over- load Prot.	F. L. Amps @ 230 V	Service Factor	"C" Dim. (Inches)	♥Notes
A4P17NB27	19	115/208-230	Auto.	1.5	1.00	10.90	S, MX, 50
A4P17NB7	19	115/230	Auto.	1.4	1.00	10.65	S, MX
A4P17NB55	19	115/230	Auto.	1.5	1.00	10.79	S, CN
A4P11NB23	21	115/230	Auto.	1.2	1.00	10.83	S, CN
A4P11NB52	21	115/230	Auto.	1.5	1.00	10.65	S, MX
A4P17NB54	22	115/230	Auto.	1.8	1.00	10.47	S, CN, 50
A4P17NB28	22	115/208-230	Auto.	1.9	1.00	10.65	S, MX, 50
A4P17NB8	22	115/230	Auto.	1.6	1.00	10.65	S, MX
A4P17NB56	22	115/230	Auto.	1.8	1.00	10.79	S, CN
A6P17NZ1	24	115/230	Auto.	1.7	1.00	12.00	S, US, 58
A4P11NH1	23	115/230	Auto.	1.8	1.00	11.40	S, MX
A4P11NB24	21	115/230	Auto.	1.5	1.00	11.34	S, CN
A4P11NB53	21	115/230	Auto.	1.8	1.00	10.90	S, MX
A4K17NH2	26	115/230	Auto.	3.5	1.00	10.40	S, MX, 50, 54
A4P17NB9	29	115/230	Auto.	2.5	1.00	12.15	S, MX
A4P17NB57	29	115/230	Auto.	2.5	1.00	10.79	S, CN
A4P11NB28	26	115/230	Auto.	2.5	1.00	11.81	S, CN
A4P11NB54	26	115/230	Auto.	2.5	1.00	11.90	S, MX
A6P11NB4	36	115/230	Auto.	3.6	1.00	13.56	S, CN
A6P11NB5	35	115/230	Auto.	3.7	1.00	13.56	S, MX

C/A - Check Availability

♥ Note listing on inside back flap

D - Item to be discontinued once inventory is depleted

Specifications are subject to change without notice

Agricultural Duty Motors

Agricultural Fan

Typically used in Poultry houses or barn exhaust fans

Features:

- TEAO designs - continuous duty
- Extended thru-bolts
- 1/2" dia. x 2 1/2" long shaft with flats, 90° apart
- Fully gasketed
- Automatic overload protected
- Must be mounted in airstream for proper cooling



Single Phase - PSC - TEAO - Resilient Base

HP	SYN RPM 60 Hz	NEMA Frame	▼ Catalog Number	Stock
1/4	1625	48Z	LM24445	✓
	1625	48Z	LM24447	C/A
1/3	1625	48Z	LM24450	✓
	1625	48Z	LM24448	✓
1/2	1075	48Z	LM24443	✓
	1625	48Z	LM24446	✓
	1625	48Z	LM24449	✓
	1075	48Z	LM24444	✓

Model Number	App. Wgt. (lbs)	Voltage	Over-load Prot.	F. L. Amps @ 230 V	Service Factor	"C" Dim. (Inches)	♥Notes
SPA4S0.25TZRY1A6027AP11-1	20	115/230	Auto.	1.8	1.00	11.06	S, MX
SPA4S0.25TZRY1A6027AP10-1	17	115/230	Auto.	1.6	1.00	10.09	S, MX
SPA4S0.33TZRY1A6027AP11-1	23	115/230	Auto.	1.9	1.00	11.81	S, MX
SPA4S0.33TZRY1A6027AP10-1	17	115/230	Auto.	2.2	1.00	10.09	S, MX
SPA6S0.33TZRY1A6027AP10-1	15	115/230	Auto.	2.1	1.00	10.84	S, MX
SPA4S0.5TZRY1A6027AP11-1	23	115/230	Auto.	2.7	1.00	11.81	S, MX
SPA4S0.5TZRY1A6027AP10-1	21	115/230	Auto.	3.0	1.00	10.84	S, MX
SPA6S0.5TZRY1A6027AP10-1	19	115/230	Auto.	3.2	1.00	10.84	S, MX

▼ LM Numbers are Lincoln Models

C/A - Check Availability

Specifications are subject to change without notice

♥ Note listing on inside back flap

Used in Ag fan and blower applications.

Screens used to protect against entry of pests and and silage

Features:

- NEMA Premium and EPAct efficiency
- Rodent Screens
- Re-greasable Bearings
- Cast Iron construction
- 1.25 Service Factor
- Class F insulation
- Inverter Duty Insulation System
- UL Recognized and CSA certified

Grain Dryer / Centrifugal Fan Motors



Three Phase - Open Drip-Proof (ODP) - Rigid Base

HP	SYN RPM 60 Hz	NEMA Frame	Catalog Number	Stock
10	1800	215T	G151828.60	✓
15	1800	254T	G151540.60	✓
		254T	170540.60	✓
20	1800	256T	G151541.60	✓
		256T	170541.60	✓
25	1800	284T	G151829.60	C/A
30	1800	286T	G151542.60	✓
		286T	170542.60	✓

Model Number	App. Wgt. (lbs)	Voltage	F. L. Amps @ 230 V	F.L. Eff.	"C" Dim. (Inches)	♥Notes
C215T17DB54	168	208-230/460	25.0	89.5	16.75	C, CN
C254T17DB12	265	208-230/460	37.6	91.0	21.89	C, CN
C254T17DB45	279	208-230/460	37.0	93.0	20.94	C, CN
C256T17DB7	307	208-230/460	48.0	91.7	23.54	C, CN
C256T17DB10	324	208-230/460	51.0	93.0	22.60	C, CN
C284T17DB11	388	208-230/460	59.6	91.7	23.54	C, CN
C286T17DB12	434	208-230/460	72.0	92.4	26.57	C, CN
C286T17DB13	471	208-230/460	71.0	93.6	25.00	C, CN

Green items are Premium Efficient

C/A - Check Availability

Specifications are subject to change without notice

♥ Note listing on inside back flap



Explosion Proof Motors

Automotive Duty Motors

Pump Motors

Washguard Motors

Agricultural Motors

HVAC / Fan Motors

Special Voltage Motors

Definite Purpose Motors

Brake Motors

Agricultural Duty Motors

Aeration Fan Motors

Features:

- Belt driven fans or fan on shaft applications
- Capacitor start designs
- Must be mounted in airstream for proper cooling
- Epoxy paint to resist corrosion
- Single-phase models have built-in terminal boards



Single Phase - Capacitor Start - TEAO - Rigid Base

HP	SYN RPM 60 Hz	NEMA Frame	Catalog Number	Stock
3/4	3450	56Z	111332.00	✓
1	3450	56Z	111333.00	✓
1 1/2	3450	56Z	111949.00	✓
	3450	143TZ	120374.00	✓
2	3450	145TZ	120375.00	✓
3	3450	145T	120376.00	✓

Model Number	App. Wgt. (lbs)	Voltage	Over- load Prot.	F. L. Amps @ 230 V	Service Factor	"C" Dim. (Inches)	♥Notes
C6C34NB15	27	115/230	None	5.0	1.00	10.90	S, US, 22
C6C34NB16	29	115/230	None	6.0	1.00	10.90	S, US, 22
C6C34NB19	32	115/230	None	8.5	1.00	11.40	S, US, 22
C143C34NB1	31	115/230	None	8.5	1.00	11.84	S, US, 22
C145C34NB1	41	230	None	10.0	1.00	13.34	S, US, 23
C145K34NB1	45	230	None	12.8	1.00	13.84	S, US, 53

Specifications are subject to change without notice

♥ Note listing on inside back flap



Three Phase - TEAO - Rigid Base

HP	SYN RPM 60 Hz	NEMA Frame	Catalog Number	Stock
3/4	3450	56Z	111334.00	✓
1	3450	56Z	111335.00	✓
1 1/2	3450	143TZ	120377.00	✓
2	3450	145TZ	120378.00	✓
3	3450	145T	120379.00	✓

Model Number	App. Wgt. (lbs)	Voltage	F. L. Amps @ 230 V	Service Factor	"C" Dim. (Inches)	♥Notes
C6T34NB18	21	208-230/460	2.4	1.00	9.90	S, US, 22
C6T34NB19	22	208-230/460	3.2	1.00	9.90	S, US, 22
C143T34NB2	31	208-230/460	4.2	1.00	11.34	S, US, 22
C145T34NB1	34	208-230/460	5.6	1.00	11.84	S, US, 22
C145T34NB2	38	230/460	7.6	1.00	12.34	S, US, 23

Specifications are subject to change without notice

♥ Note listing on inside back flap

Agricultural Duty Motors

Crop Dryer Motors

Used on Crop Dryers with air over/fan on shaft designs

Features:

- Class "F" insulation system
- Overload protected
- Keyed shaft with 1/4-20 UNC tapped hole on end
- 34" long leads
- Capacitors shipped loose on 1-phase designs
- Motor venting protected against insects and rodents
- Double sealed ball bearings



Single Phase - Drip-Proof Air Over - Rigid Base

HP	SYN RPM 60 Hz	NEMA Frame	▼ Catalog Number	Stock
3-4.5	3600	145TZ	LM24778	✓
5 - 7	3600	182TZ	131847.00	✓
7.5-10	3600	182TZ	131848.00	✓
7 - 10	3600	184TZ	LM24780	✓
7 - 9	3600	184TZ	LM24781	C/A
10 - 15	3600	215TZ	140640.00	✓
	3600	215TZ	LM24782	✓
	3600	215TZ	141084.00	✓

Model Number	App. Wgt. (lbs)	Voltage	Over-load Prot.	F. L. Amps @ 230 V	Service Factor	"C" Dim. (Inches)	♥Notes
SSD2S3-4.5TZ1B66QS10-1	46	230	Auto	13-19	1.50	13.74	S, MX
C182C34DB2	91	230	T-Stat	27.2-35	1.00	16.44	S, MX
C182K34DB4	95	230	T-Stat	31-42	1.00	16.44	S, MX
SSD2S7-10TZ1B66QS11-1	102	230	T-Stat	31-42	1.40	15.94	S, MX
SSD2S7-9TZ1C66QS11-1	88	230	T-Stat	31-42	1.30	15.50	S, MX
C215K34DB2	159	230	T-Stat	39.5-61.5	1.00	20.42	S, MX
SS215D2S10-15TZ1C66QS11-1	135	230	T-Stat	39.5-61.5	1.50	18.16	S, MX
C215K34DB3	159	230	T-Stat	40-59	1.00	20.08	S, MX, 52

▼ LM Numbers are Lincoln Models

Note 52 - Extra High Starting Torque

C/A - Check Availability

Specifications are subject to change without notice

♥ Note listing on inside back flap

Three Phase - Drip-Proof Air Over - Rigid Base

HP	SYN RPM 60 Hz	NEMA Frame	▼ Catalog Number	Stock
5-7.5	3600	184TZ	131849.00	✓
7.5-10	3600	184TZ	131850.00	✓
10 - 15	3600	215TZ	140641.00	✓

Model Number	App. Wgt. (lbs)	Voltage	Over-load Prot.	F. L. Amps @ 230 V	Service Factor	"C" Dim. (Inches)	♥Notes
C184T34DB8	70	208-230/460	T-Stat	19.0	1.00	13.94	S, MX
C184T34DB9	85	208-230/460	T-Stat	24.2	1.00	15.44	S, MX
C215T34DB3	95	208-220/440	T-Stat	40.0	1.50	17.41	S, MX

Specifications are subject to change without notice

♥ Note listing on inside back flap



Tobacco Barn Motors

Used in Tobacco Barns and other applications that require a fan motor in a high ambient condition.

Features:

- Drip-proof airover designs
- Class H insulation for high ambient conditions
- 80° C ambient rated
- 120 inch leads
- Oversized double sealed bearings
- 1/4-20 tapped hole at end of shaft



Single Phase and Three Phase - C Face With Base - TEFC

HP	SYN RPM 60 Hz	Frame	Catalog Number	Stock
7.5	1800	215TVZ	140830.00	✓
10	1800	215TVZ	140816.00	✓

Model Number	App. Wgt. (lbs)	Voltage	Over-load Prot.	Phase	F. L. Amps @ 230 V	Service Factor	"C" Dim. (Inches)	♥Notes
215TBDW17041	125	230	34.5	1.15	18.04	S,MX	20.71	S, MX,
C215K17DB13	150	230	44.0	1.15	20.65	S,MX	19.70	S, MX,

Specifications are subject to change without notice



Explosion Proof Motors

Automotive Duty Motors

Pump Motors

Washguard Motors

Agricultural Motors

HVAC / Fan Motors

Special Voltage Motors

Definite Purpose Motors

Brake Motors

Agricultural Duty Motors

Grain Stirring Motors

Used in Grain stirring systems inside grain bins

Features:

- TEFC, continuous duty
- High torque designs
- Rugged 205 bearing, shaft end
- Vertical shaft up design with drain hole
- 7/8" Dia. Shaft



Single Phase - Rigid Base - TEFC

HP	SYN RPM 60 Hz	Frame	▼ Catalog Number	Stock
1 1/2	1800	56HZ	111330.00	✓
	1800	56HZ	LM24521	C/A

Model Number	App. Wgt. (lbs)	Voltage	Over-load Prot.	F. L. Amps @ 230 V	Service Factor	"C" Dim. (Inches)	♥Notes
P6K17FB18	42	115/208-230	Man.	8.6	1.00	12.31	S, US, 53
SRF4S1.5TZ1B6028AP9-2	47	115/208-230	Man.	7.6	1.15	13.21	S, US, 53

▼ LM Numbers are Lincoln Models
C/A - Check Availability
Specifications are subject to change without notice

♥ Note listing on inside back flap

Three Phase - Rigid Base - TEFC

HP	SYN RPM 60 Hz	Frame	▼ Catalog Number	Stock
1 1/2	1800	56HZ	111329.00	✓

Model Number	App. Wgt. (lbs)	Voltage	F. L. Amps @ 230 V	% F. L. Eff.	Service Factor	"C" Dim. (Inches)	♥Notes
M6T17FB49	38	208-230/460	5.4	80.0	1.00	11.81	S, US, 53

Specifications are subject to change without notice

♥ Note listing on inside back flap

Catfish Pond Motors

Designed for outdoor pond aeration applications

Features:

- High torque designs
- Epoxy painted for corrosion protection
- Double sealed ball bearings
- Drain holes provided to purge condensation



Single Phase and Three Phase - C Face With Base - TEFC

HP	SYN RPM 60 Hz	Frame	Catalog Number	Stock
10	1800	215TC	140705.00	✓
	1800	215TC	140833.00	C/A

Model Number	App. Wgt. (lbs)	Voltage	Over-load Prot.	Phase	F. L. Amps @ 230 V	Service Factor	"C" Dim. (Inches)	♥Notes
P215K17FK5	204	230	Man.	1	40.0	1.15	20.71	S, MX,
C215T17FK19	169	208-230/460	None	3	23.6	1.15	19.7	S, MX,

Green items are Premium Efficient

C/A - Check Availability

Specifications are subject to change without notice

♥ Note listing on inside back flap

Agricultural Duty Motors Irrigation Booster Pump Motors

Used in agricultural duty irrigation systems

Features:

- Threaded jet pump motor shaft
- Vertical Shaft down design
- Rain canopy provided
- Epoxy painted for corrosion protection
- Neoprene shaft flinger



Three Phase - Irrigation Booster - TEFC

HP	SYN RPM 60 Hz	NEMA Frame	▼ Catalog Number	Stock
2	3600	56J	112991.00	✓

Model Number	App. Wgt. (lbs)	Voltage	F. L. Amps @ 460 V	Service Factor	"C" Dim. (Inches)	♥Notes
A6T34FC33	33	460	2.8	1.5	14.34	S, US

Specifications are subject to change without notice

♥ Note listing on inside back flap

Irrigation Drive Motors

Features:

- Double-sealed ball bearings
- Designed for vertical shaft down applications
- Rain canopy protects against water contamination



Three Phase - C Face Less Base - TEFC

HP	SYN RPM 60 Hz	NEMA Frame	▼ Catalog Number	Stock
1	1800	56C	111304.00	✓

Model Number	App. Wgt. (lbs)	Voltage	F. L. Amps @ 460 V	Service Factor	"C" Dim. (Inches)	♥Notes
A6T17FC33	30	460	75	1.3	12.34	S, US

Specifications are subject to change without notice

♥ Note listing on inside back flap

Milk Transfer Pump Motor

Features:

- Direct replacement for Surge milk pumps
- Double sealed ball bearings
- Epoxy painted for corrosion protection
- Permanent split capacitor design
- Requires 30MFD, 370V. capacitor - not supplied



Single Phase - Rigid Base - TENV

HP	SYN RPM 60 Hz	NEMA Frame	▼ Catalog Number	Stock
1/2	3600	56CZ	113939.00	✓

Model Number	App. Wgt. (lbs)	Voltage	F. L. Amps @ 230 V	Service Factor	"C" Dim. (Inches)	♥Notes
C6P34NK5	42	230	4.5	SPEC	13.07	S, US

Specifications are subject to change without notice

♥ Note listing on inside back flap

Agricultural Duty Motors

Feed-Auger Drive Motors - Dust Tight

Replacement motors for poultry feed auger drive systems

Features:

- Choice of mechanical or solid state starting switch
- Mechanical switch has over-speed protection - Note 51
- Manual overload protected



Single Phase - TEFC - 60 Hertz

HP	SYN RPM 60 Hz	NEMA Frame	▼ Catalog Number	Stock	Model Number	App. Wgt. (lbs)	Voltage	Over-load Prot.	F. L. Amps @ 230 V	Service Factor	"C" Dim. (Inches)	♥Notes
1/3	1800	48YZ	101159.00	√	P4C17FZ11	21	115/230	Man.	3.1	1.00	10.47	S, MX, 26
	1800	56YZ	117887.00	√	117887.00	21	115/208-230	Man.	2.9	1.00	12.00	S, MX, 26, 51, 64
	1800	48N	LM24462	√	SPA4S0.33TADN1C6027TP1	23	115/230	Man.	2.5	1.50	11.31	S, MX, 26, 51
1/2	1800	48YZ	101120.00	√	P4C17FZ7	22	115/208-230	Man.	4.0	1.15	10.72	S, MX, 26
	1800	56YZ	117888.00	√	117888.00	22	115/208-230	Man.	4.2	1.25	12.00	S, MX, 26, 51, 64
	1800	48N	LM24463	√	SPA4S0.5TADN1C6027TP1	23	115/230	Man.	3.4	1.00	11.81	S, MX, 26, 51
3/4	1800	48YZ	101119.00	√	P4C17FZ6	24	115/208-230	Man.	5.4	1.00	11.47	S, MX, 26
	1800	56YZ	117889.00	√	117889.00	28	115/208-230	Man.	4.2	1.25	12.00	S, MX, 26, 51, 64
	1800	48N	LM24812	√	SRF4S0.75TZADN1C6028TP1-1	31	115/208-230	Man.	5.5	1.00	12.59	S, MX, 26, 51
1	1800	56YZ	112615.00	√	P6C17FZ27	35	115/230	Man.	7.0	1.00	12.11	S, MX, 27
	1800	56YZ	117883.00	√	117883.00	35	115/208-230	Man.	5.4	1.25	12.00	S, MX, 27, 51, 64
	1800	56NZ	LM24813	√	SRF4S1TZADN1C6028TP-1	32	115/208-230	Man.	6.7	1.00	13.39	S, MX, 27, 51
1 1/2	1800	56YZ	113280.00	√	P6K17FZ6	47	115/208-230	Man.	6.5	1.00	13.62	S, MX, 27, 53
	1800	56YZ	113301.00	D	M6K17FZ7	44	115/230	Man.	6.5	1.00	13.62	S, MX, 27, 51, 53
	1800	56YZ	117884.00	√	117884.00	44	115/208-230	Man.	6.5	1.15	14.51	S, MX, 27, 51, 53, 64
	1800	56NZ	LM24814	√	SRF4S1.5TZADN1C6028TP1-1	41	115/208/230	Man.	7.6	1.00	14.38	S, MX, 27, 51, 53

▼ LM Numbers are Lincoln Models

♥ Note listing on inside back flap

Note 64 - Stub shaft on ODE for manual jogging

D - Item to be obsoleted when inventory is depleted

Specifications are subject to change without notice

Single Phase - TEFC - 50 Hertz

HP	SYN RPM 60 Hz	NEMA Frame	Catalog Number	Stock	Model Number	App. Wgt. (lbs)	Voltage	Over-load Prot.	F. L. Amps @ 220 V	Service Factor	"C" Dim. (Inches)	♥Notes
1/2	1800	48YZ	101643.00	√	M4C14FZ5	26	110/220	Man.	4.0	1.00	11.47	S, MX, 26, 51
3/4	1800	48YZ	101644.00	√	M4C14FZ6	30	110/220	Man.	5.8	1.00	12.22	S, MX, 26, 51
1	1800	56YZ	113906.00	√	M6C14FZ8	39	110/220	Man.	6.4	1.00	12.61	S, MX, 27, 51
1 1/2	1800	56YZ	113907.00	√	P6K14FZ2	48	110/220	Man.	8.6	1.00	13.61	S, MX, 27, 51

Specifications are subject to change without notice

♥ Note listing on inside back flap

Agricultural Duty Motors

Hatchery and Incubator Fan Motors

Replacement motors for hatchery and incubator fan motors

Features:

- Automatic overload protected
- 15MFD, 370V. capacitor shipped loose with motor 101341.00
- Motor 114102.00 is a split phase two-speed motor
- Double shielded ball bearings



Cat. No. 101341.00



Cat. No. 114102.00

Single Phase - TEAO

HP	SYN RPM 60 Hz	NEMA Frame	Catalog Number	Stock
1/4	1800	48Y	101341.00	✓
1/2-0.22	1800/1200	56H	114102.00	✓

Model Number	App. Wgt. (lbs)	Voltage	Over-load Prot.	F. L. Amps @ 230 V	Service Factor	"C" Dim. (Inches)	♥Notes
A4P17NZ24	17	115/230	Auto.	1.4	1.00	8.93	S, US, 16, 34, 58
A6S46NR4	33	115	Auto.	9.3-5.6*	1.25	11.81	S, US

* Full Load amps are at high speed and low speeds, respectively at 115 volts

♥ Note listing on inside back flap

Specifications are subject to change without notice

Replacement motors used in Poultry feather picker machines

Features:

- Phosphatized or stainless steel shafts drilled and tapped metric shafts
- Epoxy painted for corrosion protection
- Stainless motor - 122009.00
- Encapsulated Stainless motor - 122010.00
- Washdown duty features including shaft seals
- USDA approved food-safe paint
- Extra high breakdown torques



Feather Picker Motors



Three Phase - TEFC

HP	SYN RPM 60 Hz	NEMA Frame	Catalog Number	Stock
2	1800	145T	121934.00	✓
	1800	145T	122009.00	✓
	1800	145T	122010.00	✓
	1200	184TZ	132246.00	✓
2/1.5	1200	112M	132247.00	✓
3	1800	56HZ	115751.00	✓
	1800	145T	121944.00	✓

Model Number	App. Wgt. (lbs)	Voltage	F. L. Amps @ 230 V	F.L. Eff.	Service Factor	"C" Dim. (Inches)	♥Notes
C145T17FB87	54	208-230/460	7.0	86.5	1.25	14.76	S, US
C145T17WK49	58	208-230/460	5.8	86.5	1.25	13.25	S, US
C145T17WK50	75	208-230/460	5.6	84.0	1.15	12.75	S, US
C184T11FB24	96	230/460	7.2	88.5	1.50	15.96	S, MX
C184T11FB25	96	230/460	7.2	88.5	1.50	15.96	S, MX, 29
C6T17FB113	45	208-230/460	8.6	82.5	1.00	14.25	S, US, 5
C145T17FB92	45	230/460	8.6	82.5	1.00	14.25	S, US, 56

Green items are Premium Efficient

♥ Note listing on inside back flap

Note: Catalog Number 115751.00 has a 303 stainless steel shaft.

Specifications are subject to change without notice



Explosion Proof Motors

Automotive Duty Motors

Pump Motors

Washguard Motors

Agricultural Motors

HVAC / Fan Motors

Special Voltage Motors

Definite Purpose Motors

Brake Motors

Agricultural Duty Motors

Industry-AG • High Torque

General Purpose, heavy duty for industrial and agriculture applications

Features:

- Manual overload protected
- Double sealed ball bearings
- Weather resistant reset button protection
- Capacitor start provides high starting torque



Rigid Base - 115-208/230V - TEFC

HP	SYN RPM 60 Hz	NEMA Frame	Catalog Number	Stock
1/3	1800	56	M002256.00	D
	1800	56	117862.00	√
1/2	1800	56	117863.00	√
3/4	1800	56	117864.00	√
1	1800	56	117865.00	√
1 1/2	1800	56	M009089.00	D
	1800	56H	117866.00	√
2	1800	56HZ	117867.00	√

Model Number	App. Wgt. (lbs)	Voltage	Over-load Prot.	F. L. Amps @ 230 V	Service Factor	"C" Dim. (Inches)	♥Notes
M6C17FB142	24	115-208/230	Man.	2.9	1.15	11.00	S, CN
C6C17FB164	20	115-208/230	Man.	3.3	1.15	11.82	S, MX
C6C17FB165	26	115-208/230	Man.	4.4	1.15	11.82	S, MX
C6C17FB166	33	115-208/230	Man.	5.5	1.15	12.32	S, MX
C6C17FB167	33	115-208/230	Man.	6.7	1.15	12.82	S, MX
M6K17FB49	41	115-208/230	Man.	9.0	1.00	12.88	S, CN
C6K17FB61	50	115-208/230	Man.	7.6	1.15	13.82	S, MX
C6K17FB62	50	230	Man.	9.4	1.15	14.87	S, MX

"M00" Series motors use C Face Kit M064076.00

♥ Note listing on inside back flap

D - Item to be obsoleted when inventory is depleted

Specifications are subject to change without notice

C Face Less Base - 115-208/230 - TEFC

HP	SYN RPM 60 Hz	NEMA Frame	Catalog Number	Stock
1/3	1800	56C	M002290.00	D
	1800	56C	117878.00	√
1/2	1800	56C	M009492.00	D
	1800	56C	117879.00	√
3/4	1800	56C	M009493.00	D
	1800	56C	117880.00	√
1	1800	56C	117881.00	√

Model Number	App. Wgt. (lbs)	Voltage	Over-load Prot.	F. L. Amps @ 230 V	Service Factor	"C" Dim. (Inches)	♥Notes
M6C17FC140	24	115-208/230	Man.	2.9	1.15	10.81	S, CN
C6C17FC178	23	115-208/230	Man.	3.3	1.15	11.82	S, MX
M6C17FC141	27	115-208/230	Man.	3.9	1.15	10.81	S, CN
C6C17FC179	24	115-208/230	Man.	4.4	1.15	11.82	S, MX
M6C17FC142	30	115-208/230	Man.	5.0	1.15	11.31	S, CN
C6C17FC180	28	115-208/230	Man.	5.5	1.15	12.32	S, MX
C6C17FC181	30	115-208/230	Man.	6.7	1.15	12.82	S, MX

D - Item to be obsoleted when inventory is depleted

♥ Note listing on inside back flap

Specifications are subject to change without notice

Agricultural Duty Motors

Variable Speed - High Performance AG Fan Motors

Designed for use in agricultural fan applications where variable speed is required

Features:

- Water-tight connection end compartment
- Locked double sealed ball bearings
- All angle mounting
- Shaft seal on output shaft end
- Automatic overload protected



Single Phase - TEAO - Rigid Base - Extended Thru-Bolts

HP	SYN RPM 60 Hz	NEMA Frame	Catalog Number	Stock
1/4	1625	48Y	M099899.00	D
	1625	48Y	A099899.00	✓
	1060	48Y	M099460.00	D
	1060	48Y	A099460.00	✓
1/3	1625	48Y	M099900.00	D
	1625	48Y	A099900.00	✓
	1060	48Y	M099461.00	D
	1060	48Y	A099461.00	✓
1/2	1625	48Y	M099901.00	D
	1625	48Y	A099901.00	✓
	1060	48Y	M099462.00	D
	1060	48Y	A099462.00	✓

Model Number	App. Wgt. (lbs)	Voltage	Over-load Prot.	F. L. Amps @ 230 V	Service Factor	"C" Dim. (Inches)	♥Notes
A4P17NB58	18	115-208/230	Auto.	1.3	1.00	11.30	S, CN
A4P17NZ139	19	115-208/230	Auto.	1.4	1.00	10.89	S, MX
A4P11NB25	21	115-208/230	Auto.	1.3	1.00	11.80	S, CN
A4P11NB5		115-208/230	Auto.				S, MX
A4P17NB59	19	115-208/230	Auto.	1.8	1.00	11.30	S, CN
A4P17NZ141	20	115-208/230	Auto.	1.6	1.00	10.89	S, MX
A48P11NB26	22	115-208/230	Auto.	1.9	1.00	11.80	S, CN
A4P17NZ86	23	115-208/230	Auto.	1.8	1.00	11.14	S, MX
A4P17NB60	22	115-208/230	Auto.	2.6	1.00	11.70	S, CN
A4P17NZ142	23	115-208/230	Auto.	2.2	1.00	11.39	S, MX
A4P11NB27	25	115-208/230	Auto.	2.8	1.00	12.20	S, CN
A4P911NZ85	26	115-208/230	Auto.	2.8	1.00	11.39	S, MX

D = Item to be obsolete once inventory has been depleted
 Specifications are subject to change without notice

♥ Note listing on inside back flap

Agricultural Fan Motors - Belt Drive • TEAO

Designed for use in agricultural belted fan applications

Features:

- Capacitor start / Capacitor run designs for high efficiency
- Mount in airstream for proper cooling
- Combination 56 / 140 frame stamped steel base



High-Efficiency - Single-Phase

HP	SYN RPM 60 Hz	NEMA Frame	Catalog Number	Stock
1/2	1725	56	M009580.00	D
	1725	56	A009580.00	✓
3/4	1725	56H	M009581.00	D
	1725	56H	A009581.00	✓
1	1725	56H	M009782.00	D
	1725	56H	A009782.00	✓
1 1/2	1725	56H	M009594.00	D
	1725	56H	A009594.00	✓
2	1725	145T	M009595.00	D
	1725	145T	A009595.00	✓

Model Number	App. Wgt. (lbs)	Voltage	Over-load Prot.	F. L. Amps @ 230 V	Service Factor	"C" Dim. (Inches)	♥Notes
A6K17NB21	27	115/208-230	-	2.2	1.00	10.33	S, CN
A6K17NB30	27	115/208-230	-	2.3	1.15	11.44	S, MX
A6K17NB15	30	115/208-230	Auto.	3.4	1.00	10.83	S, CN
A6K17NB29	30	115/208-230	Auto.	3.3	1.00	11.44	S, MX
A6K17NB17	37	115/208-230	Auto.	4.3	1.00	11.80	S, CN
A6K17NB33	37	115/208-230	Auto.	4.0	1.00	12.44	S, MX
A6K17NB16	39	115/208-230	Auto.	6.8	1.00	12.60	S, CN
A6K17NB32	39	115/208-230	Auto.	5.8	1.00	11.94	S, MX
M145K17NB	47	230	Auto.	9.5	1.00	12.80	S, CN, *
U145K17NB	47	230	Auto.	9.2	1.00	13.49	S, MX *

* Motor M009595 has a frame mounted conduit box.

♥ Note listing on inside back flap

D = Item to be obsolete once inventory has been depleted
 Specifications are subject to change without notice



Explosion Proof Motors

Automotive Duty Motors

Pump Motors

Washguard Motors

Agricultural Motors

HVAC / Fan Motors

Special Voltage Motors

Definite Purpose Motors

Brake Motors

Agricultural Duty Motors

Agriculture Fan

115/230 Volts - Belt Drive - Overload Protection

Features:

- Capacitor start/capacitor run design
- Ball bearings
- LM24777 must be mounted in airstream



Single Phase - TENV - Rigid Base

HP	SYN RPM 60 Hz	NEMA Frame	▼ Catalog Number	Stock
1/2	1725	56Z	LM24776	✓
1	1725	56Z	LM24777	✓

Model Number	App. Wgt. (lbs)	Voltage	Over- load Prot.	F. L. Amps @ 230 V	Service Factor	"C" Dim. (Inches)	♥Notes
SRN4S0.5TZ1B6027TP2-1	21	115/230	Auto	2.3	1.00	10.47	S, MX, 12, 53
SRA4S1TZ1B6027TP2-1	32	115/230	Auto	4.6	1.00	10.72	S, MX, 53, *

▼ LM Numbers are Lincoln Models

* LM24777 is a TEAO design

Specifications are subject to change without notice

♥ Note listing on inside back flap

Agriculture Fan

Direct Drive Thru-Bolt Mount

Features:

- 1/2" long thru-bolts
- 48Y - 1/2" dia., 1-1/2 long shaft with flat
- 48YZ - 1/2" dia., 2-1/2" long shaft with two flats



Single Speed - Single Phase - TEAO - Thru-Bolt Mount

HP	SYN RPM 60 Hz	NEMA Frame	▼ Catalog Number	Stock
1/4	1725	48Y	LM24488	C/A

Model Number	App. Wgt. (lbs)	Voltage	Over- load Prot.	F. L. Amps @ 115 V	Service Factor	"C" Dim. (Inches)	♥Notes
SPN4S0.25TZNY1S6001TP1-1	10	115	Auto	4.0	1.00	7.62	S, MX

▼ LM Numbers are Lincoln Models

C/A - Check Availability

Specifications are subject to change without notice

♥ Note listing on inside back flap

Two Speed - Single Phase - TEAO - Thru-Bolt Mount

HP	SYN RPM 60 Hz	NEMA Frame	▼ Catalog Number	Stock
1/4	1725	48YZ	LM24492	C/A
1/3	1725	48YZ	LM24491	C/A

Model Number	App. Wgt. (lbs)	Voltage	Over- load Prot.	F. L. Amps @ 115 V	Service Factor	"C" Dim. (Inches)	♥Notes
SPA4/6/1S0.25/0.25TZNY1S6001TP2-1	17	115	Auto	4.1	1.00	11.09	S, MX
SPA4/6/1S0.33/0.33TZNY1S6001TP2-1	18	115	Auto	5.3	1.00	11.34	S, MX

▼ LM Numbers are Lincoln Models

C/A - Check Availability

Specifications are subject to change without notice

♥ Note listing on inside back flap

Agricultural Duty Motors

Agriculture Fan

Features:

- 115 & 230 Volts • Single Phase
- Extended thru-bolts on 48Z frame motos
- 48Z - 1/2 dia. shaft, 2-1/2 long with two flats
- 56Z - 1/2 dia. shaft, 2-1/2" long shaft with keyway
- Includes 5/8" shaft adaptor sleeve with key



Single Phase - TEAO - Resilient Base

HP	SYN RPM 60 Hz	NEMA Frame	▼ Catalog Number	Stock
1/4	1725	48Z	LM24487	C/A
1/3	1725	48Z	LM24486	✓
1/2	1725	56Z	LM24809	C/A

Model Number	App. Wgt. (lbs)	Voltage	Over-load Prot.	F. L. Amps @ 230 V	Service Factor	"C" Dim. (Inches)	♥Notes
SPA4S0.25TZRY1S6001TP2-1	17	115	Auto	3.5	1.00	10.09	S, MX
SPA4S0.33TZRY1S6001TP2-1	21	115	Auto	4.5	1.00	10.09	S, MX
SRA4S0.5TZR1S6027TP2-1	24	115/230	Auto	6.6	1.00	11.34	S, MX

▼ LM Numbers are Lincoln Models

* Amps at 115 Volts

C/A - Check Availability

Specifications are subject to change without notice

♥ Note listing on inside back flap

Aeration Fan, HVAC

115 & 230 VOLTS • Single Phase

Features:

- Automatic overload protected
- Sealed bearings
- 18" extended leads
- Shaft has keyway and 1/4-20 UNC tapped hole on end of shaft

Single Phase - TEAO - Rigid Base

HP	SYN RPM 60 Hz	NEMA Frame	▼ Catalog Number	Stock
1	3450	56Z	LM24786	✓
1 1/2	3475	143TZ	LM24787	✓
3	3510	145TZ	LM24788	✓

Model Number	App. Wgt. (lbs)	Voltage	Over-load Prot.	F. L. Amps @ 230 V	Service Factor	"C" Dim. (Inches)	♥Notes
SRA2S1TZ1C6027L10MB6TP2-1	29	115/230	Auto	5.6	1.15	10.94	S, MX
SSA2S1.5TZ1C6027L10MB6TP2-1	35	115/230	Auto	8.4	1.15	11.49	S, MX
SS145A2S3TZ1B66L10MB6TP2-1	52	230	Auto	11.8	1.15	13.49	S, MX

▼ LM Numbers are Lincoln Models

Specifications are subject to change without notice

♥ Note listing on inside back flap



Explosion Proof Motors

Automotive Duty Motors

Pump Motors

Washguard Motors

Agricultural Motors

HVAC / Fan Motors

Special Voltage Motors

Definite Purpose Motors

Brake Motors