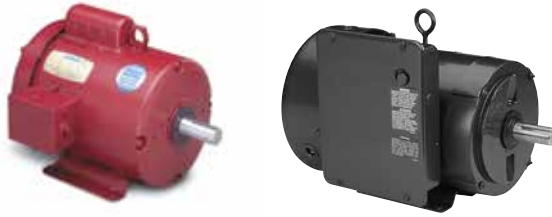


# Agricultural Duty Motors

## High Torque - General Purpose



### Single Phase - TEFC - Rigid Base

HP	SYN RPM 60 Hz	NEMA Frame	▼ Catalog Number	Stock	Model Number	App. Wgt. (lbs)	Voltage	Over-load Prot.	F. L. Amps @ 230 V	Service Factor	"C" Dim. (Inches)	♥Notes
1/3	1800	56	113256.00	✓	M6C17FB66	20	115/208-230	Man.	3.2	1.15	10.81	S, US,
	1800	56	LM24789	✓	SRF4S0.33T1C6028AP7TP1	24	115/208-230	Man.	3.3	1.15	12.82	S, MX
1/2	1800	56	110086.00	✓	M6C17FB11	22	115/208-230	Man.	4.4	1.15	10.81	S, US,
	1800	56	LM24790	✓	SRF4S0.5T1C6028AP7TP1	25	115/208-230	Man.	4.4	1.15	11.82	S, MX
3/4	1800	56	110087.00	✓	M6C17FB9	26	115/208-230	Man.	5.4	1.15	11.31	S, US,
	1800	56	LM24791	✓	SRF4S0.75T1C6028AP7TP1	30	115/208-230	Man.	5.5	1.15	12.32	S, MX
1	1800	56	110088.00	✓	M6C17FB10	30	115/208-230	Man.	7.0	1.15	11.81	S, US,
	1800	56	LM24792	✓	SRF4S1T1C6028AP7TP1	32	115/208-230	Man.	6.7	1.15	12.82	S, MX
	1800	143T	121569.00	✓	M143C17FB13	30	115/208-230	Man.	7.0	1.15	12.75	S, US,
	1800	143T	LM24793	✓	SSF4S1T1C6028AP7TP1	35	115/208-230	Man.	6.7	1.15	12.87	S, MX
1 1/2	1800	56H	110089.00	✓	M6K17FB3	41	115/208-230	Man.	8.6	1.15	12.61	S, US,
	1800	56H	LM24794	✓	SRF4S1.5T1B6028AP7TP1	41	115/208-230	Man.	7.6	1.15	13.82	S, MX
	1800	56HZ	113938.00	✓	M6K17FB39	39	115/208-230	Man.	8.6	1.15	13.25	S, US, 3, 53
	1800	145T	LM24795	✓	SSF4S1.5T1B6028AP7TP1	42	115/208-230	Man.	7.6	1.15	13.87	S, MX
2	1800	56HZ	110090.00	✓	M6K17FB4	43	230	Man.	9.2	1.15	13.75	S, US, 3, 53
	1800	182T	131541.00	✓	P182C17FB12	50	115/208-230	Man.	12.4	1.15	14.46	S, MX
3	1800	184T	131542.00	✓	P184C17FB13	83	230	Man.	19.0	1.15	16.46	S, MX
	1800	184T	LM24797	✓	SS184F4S3T1C66AP7TP1	92	230	Man.	19.0	1.15	16.46	S, MX
5	1800	184T	131543.00	✓	P184K17FB16	96	230	Man.	20.5	1.15	17.46	S, MX, 53
	1800	184T	LM24798	✓	SSF4S5T1B66AP71TP1	90	230	Man.	20.5	1.15	17.46	S, MX, 53
7 1/2	1800	215T	140707.00	✓	P215K17FB15	144	230	Man.	32.0	1.15	20.21	S, MX, 53
	1800	215T	LM24799	✓	SS215F4S7.5T1B66AP7TP1	130	230	Man.	30.0	1.15	21.09	S, MX, 53
10	1800	215T	140706.00	✓	P215K17FB16	152	230	Man.	40.0	1.15	20.71	S, MX, 53

▼ LM Numbers are Lincoln Models

♥ Note listing on inside back flap

Specifications are subject to change without notice



Explosion Proof Motors

Automotive Duty Motors

Pump Motors

Washguard Motors

Agricultural Motors

HVAC / Fan Motors

Special Voltage Motors

Definite Purpose Motors

Brake Motors