

# PRODUCT INFORMATION PACKET



Model No: C4D17FZ26C

Catalog No: 108710.00

..1/2HP..60RPM.P1102-48.TEFC.90V..DC.....C4D17FZ26C.P1100...29:1.DC GEARMOTORS  
FHP..476LBIN..DOUBLE....

P1100 Series



Regal and Leeson are trademarks of Regal Beloit Corporation or one of its affiliated companies.

©2018 Regal Beloit Corporation, All Rights Reserved. MC017097E





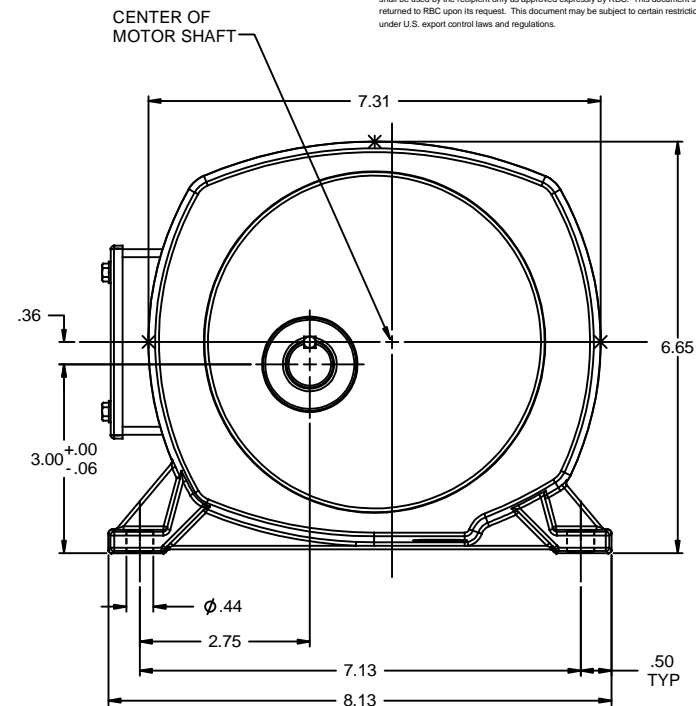
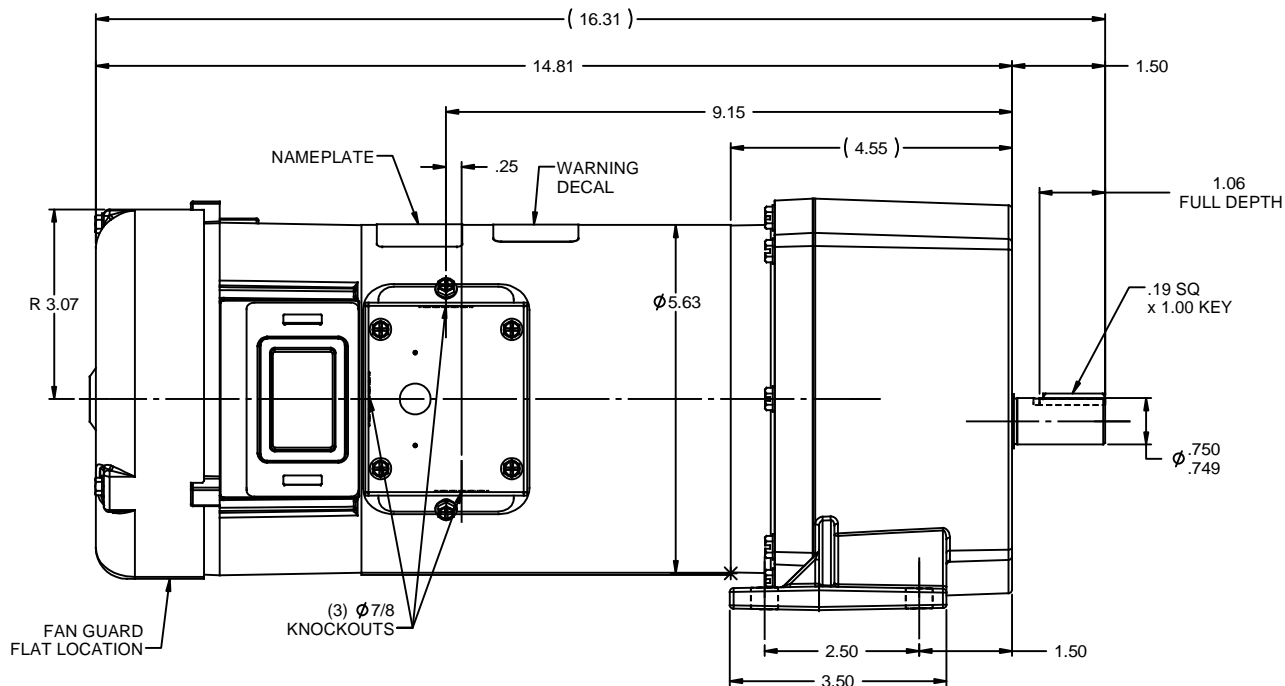
## Nameplate Specifications

Output HP	0.50 Hp	Output KW	0.37 kW
Voltage	90 V	Current	5.0 A
Speed	60 rpm	Service Factor	1
Efficiency	72.1 %	Duty	Continuous
Insulation Class	F	Frame	48Y
Enclosure	Totally Enclosed Fan Cooled	Overload Protector	No
Ambient Temperature	40 °C	Drive End Bearing Size	6203
Opp Drive End Bearing Size	6203	UL	Recognized
CSA	Y	CE	N

## Technical Specifications

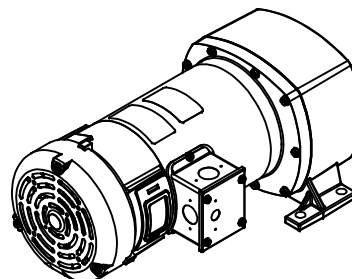
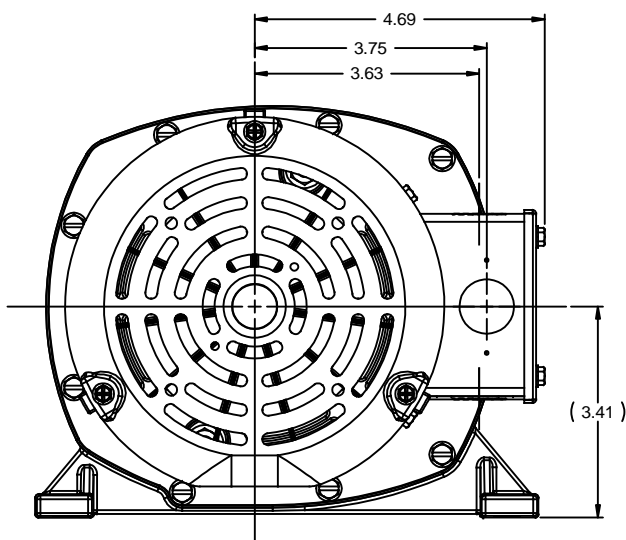
Rotation	Reversible	Mounting	Special
Shaft Type	Parallel	Overall Length	16.31 in
Frame Length	5.97 in	Shaft Diameter	0.750 in
Shaft Extension	1.5 in		
Outline Drawing	032031-108710	Connection Diagram	NONE

This is an uncontrolled document once printed or downloaded and is subject to change without notice. Date Created: 10/15/2018



NOTES:  
1) GEARBOX OIL: MOBIL-MOBIL GEAR 600XP-320

108712.00	90	1/2	13:1	135	210
108711.00	90	1/2	19:1	92	320
108710.00	90	1/2	29:1	60	476
108709.00	90	1/2	42:1	42	705
108708.00	90	1/2	53:1	33	822
108707.00	90	1/2	95:1	18	1112
CATALOG No.	VOLTS	INPUT HP	GEAR RATIO	RPM	F.L. TORQUE (LB-IN)



			TOLERANCES UNLESS SPECIFIED		ELECTRIC MOTORS GEARMOTORS AND DRIVES		DRAWN IPG 6/2/10	
			DEC	INCHES			CHK	PG 6/2/10
			X	±.1			APPR	
			.XX	±.03	TITLE OUTLINE		SCALE	1:2
			.XXX	±.005	48 FRAME DC - P1100 GEARBOX		REF	031211
00 RELEASED: REF. 031211 & 031879			PG	XXX ±.0005	MATL		FMF	108709.00
NO			REVISION	BY & DATE	CHK	ANG ±1/2"	FINISH	PAGE OF
			THIRD ANGLE PROJECTION		RFP	PREV	SIZE	DRAWING NO
					NETWORK FILE NAME 032031		B	032031
								REV 00