

PRODUCT INFORMATION PACKET



Model No: C6T17NC333B

Catalog No: 117699.00

..3/4HP..1800RPM.56C.TEFC.230V.3PH.60HZ.CONT.40C..C-FACE.C6T17NC333B.....BRAKE MOTOR.....

Brake



Regal and Leeson are trademarks of Regal Beloit Corporation or one of its affiliated companies.

©2018 Regal Beloit Corporation, All Rights Reserved. MC017097E



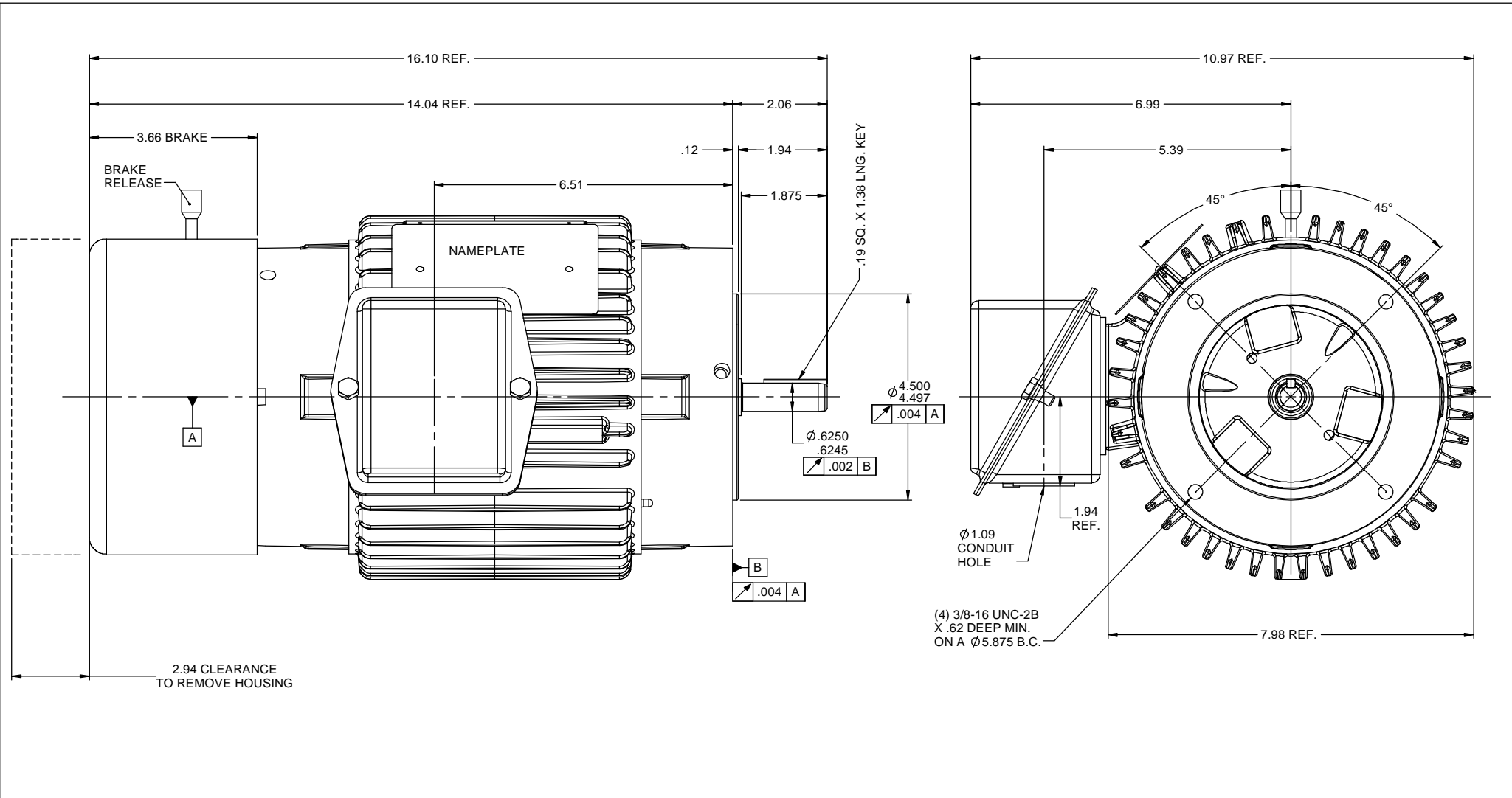


Nameplate Specifications

Output HP	0.75 Hp	Output KW	0.56 kW
Frequency	60 Hz	Voltage	230 V
Current	2.2 A	Speed	1760 rpm
Service Factor	1	Phase	3
Efficiency	85.5 %	Duty	Continuous
Insulation Class	H	Design Code	B
KVA Code	N	Frame	56C
Enclosure	Totally Enclosed Non Ventilated	Overload Protector	No
Ambient Temperature	40 °C	Drive End Bearing Size	6205
Opp Drive End Bearing Size	6203	UL	Recognized
CSA	Y	CE	N
IP Code	43		

Technical Specifications

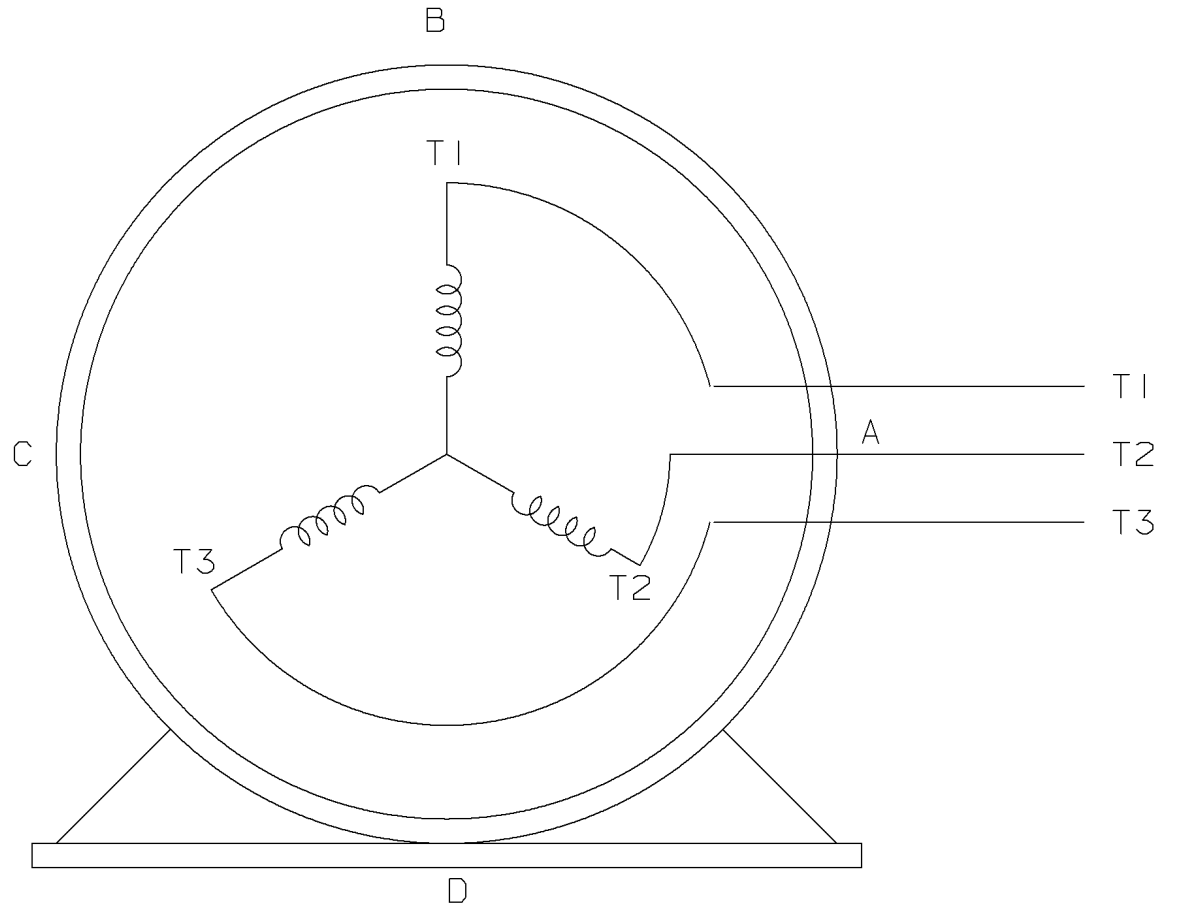
Electrical Type	Squirrel Cage Induction Run	Starting Method	Across The Line
Poles	4	Rotation	Reversible
Mounting	Round	Motor Orientation	HORIZONTAL
Drive End Bearing	BALL / HEAT STABILIZED	Opp Drive End Bearing	BALL / HEAT STABILIZED
Frame Material	Cast Iron	Shaft Type	T
Overall Length	16.10 in	Frame Length	6.25 in
Shaft Diameter	0.625 in	Shaft Extension	1.88 in
Assembly/Box Mounting	F1 ONLY		
Outline Drawing	OL117699	Connection Diagram	A-EE7300-LE



				TOLERANCES UNLESS SPECIFIED		Regal-Beloit Corporation		DRAWN LST 9/14/12	
				DEC	INCHES			CHK	
				X	$\pm .1$	TITLE OUTLINE 56 FRAME BRAKEMOTOR TENV - "C" FACE		APPR	
				XX	$\pm .01$			SCALE	1:2
				XXX	$\pm .005$			REF	
				XXXX	$\pm .0005$			MATL	
NO	REVISION			CHK	ANG	$\pm 1/2^\circ$	FINISH	PAGE	OF
				BY & DATE	RFP	PREV	SIZE	DRAWING NO	REV
				THIRD ANGLE PROJECTION	NETWORK FILE NAME OL117699		B	OL117699	

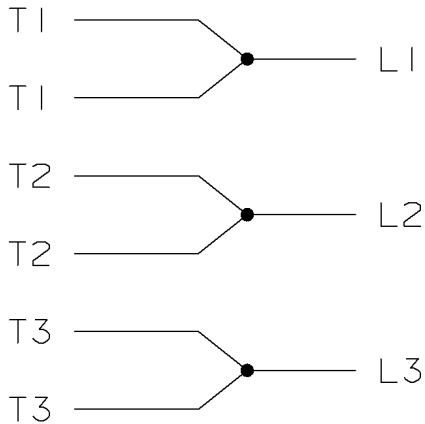
THREE PHASE - SINGLE VOLTAGE
MOTOR - CONDUIT BOX @ 'A'

TO REVERSE ROTATION:
INTERCHANGE ANY TWO LINE
LEAD CONNECTIONS




VIEW OF TERMINAL END

IF MOTOR HAS
6 LEADS



A-9806 DECAL

				TOLERANCES UNLESS SPECIFIED		 ELECTRIC MOTORS GEARMOTORS AND DRIVES	DRAWN MSG 05-22-2002			
				DEC.	TOLERANCE		CHK ML 05-22-2002			
				.X	± .1		APPD GK 05-22-2002			
				.XX	± .02		SCALE			
				.XXX	± .005		REF			
1	NEW DRAWING	MSG	05-22-2002	ML	.XXXX ± .0005	TITLE CONNECTION DIAGRAM SINGLE VOLT - 3Ø MOTOR	FMF			
NO.	REVISION	BY	DATE	CHK	ANG ± 7'30'		✓ SURFACE ROUGHNESS UNLESS SPECIFIED	PREV		
THIS DRAWING IN DESIGN AND DETAIL IS OUR PROPERTY AND MUST NOT BE USED EXCEPT IN CONNECTION WITH OUR WORK. ALL RIGHTS OF DESIGN AND INVENTION ARE RESERVED. THIS IS AN ELECTRONICALLY GENERATED DOCUMENT - DO NOT SCALE THIS PRINT				PURCHASED		CAD FILE EE7300-LE	SHOP BOOK	SIZE A	DRAWING NO. EE7300-LE	REV. I
				DIST WA - LB - WP - LM - BR - BR						



Motor Load Data						LR	
Load	0%	25%	50%	75%	100%	115%	125%
Current (Amps)	1.50	1.56	1.60	1.80	2.20	2.50	2.80
Torque (ft-lb)	0.00	0.45	0.90	1.70	2.24	2.57	2.90
RPM	1800	1785	1775	1765	1760	1,754	1745
Efficiency (%)		67.0	78.5	83.0	85.5	85.0	84.5
P.F. (%)	12.0	36.0	54.0	68.0	75.0	77.5	80.0

Motor Speed Data						Information Block	
Speed (RPM)	LR	Pull-Up	BD	Rated	Idle	HP	Sync. RPM
Speed (RPM)	0	800	1360	1760	1800	0.8	1800
Current (Amps)	23.0	19.4	14.0	2.20	1.50		145
Torque (ft-lb)	8.3	8.5	10.5	2.24	0.00		TENV

Construction	TTN
Voltage	230 V
Frequency	60 Hz
Design	A
LR Code letter	N
Service Factor	1.15
Temp Rise @ FL	35 °C
Duty	CONT
Ambient	40 °C
Elevation	1,000 feet
Rotor/Shaft wk²	0.12 LB-Ft²
Ref Wdg	ZT496 R2
Sound Pressure @ 1M	62 dBA
VFD Rating	NONE
Outline Dwg	OL117699
Conn. Diag	A-EE730-LE
Additional Specifications:	
0	
EQUIV CKT (OHMS / PHASE)	
R1	R2
2.6480	1.8920
X1	X2
3.3940	3.6880
Xm	104.0330

