

PRODUCT INFORMATION PACKET



Model No: 404TTGS16581AN

Catalog No: 825416.00

..60HP..1200RPM.404T.EPFC.230/460V.3PH.60HZ.CONT.40C.1.0SF.RIGID.....EXPLOSION PROOF.....

Explosion Proof



Regal and Leeson are trademarks of Regal Beloit Corporation or one of its affiliated companies.

©2018 Regal Beloit Corporation, All Rights Reserved. MC017097E



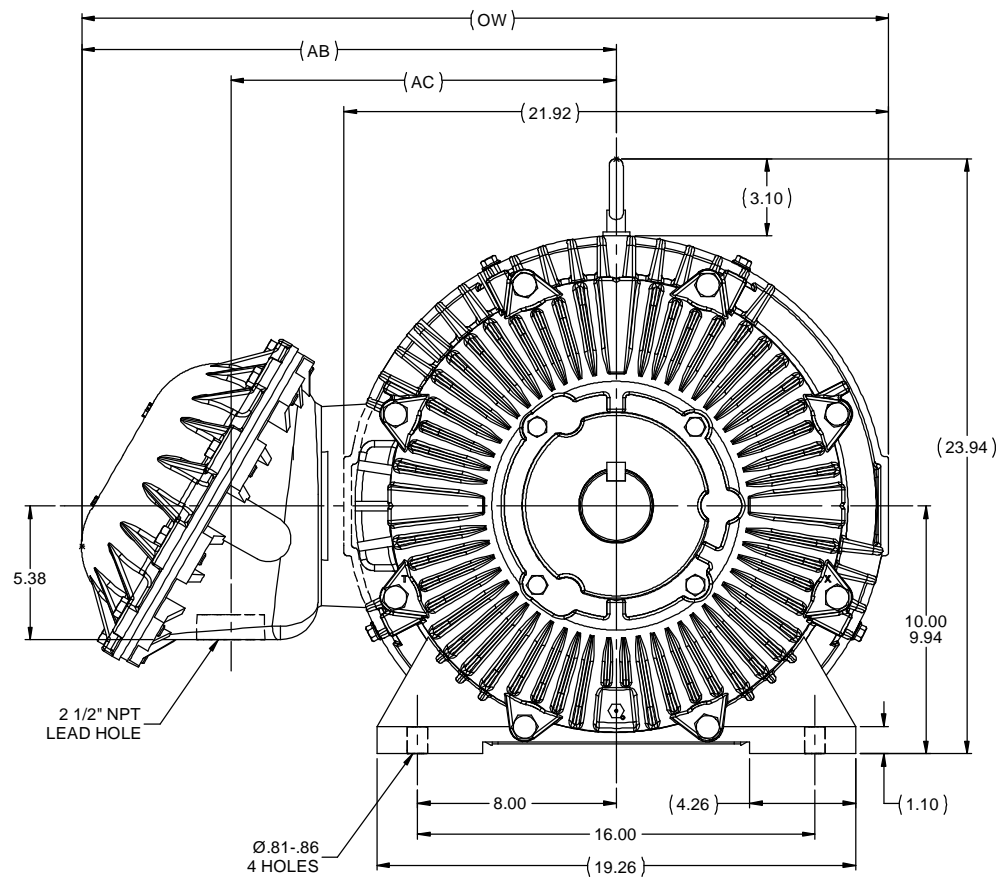
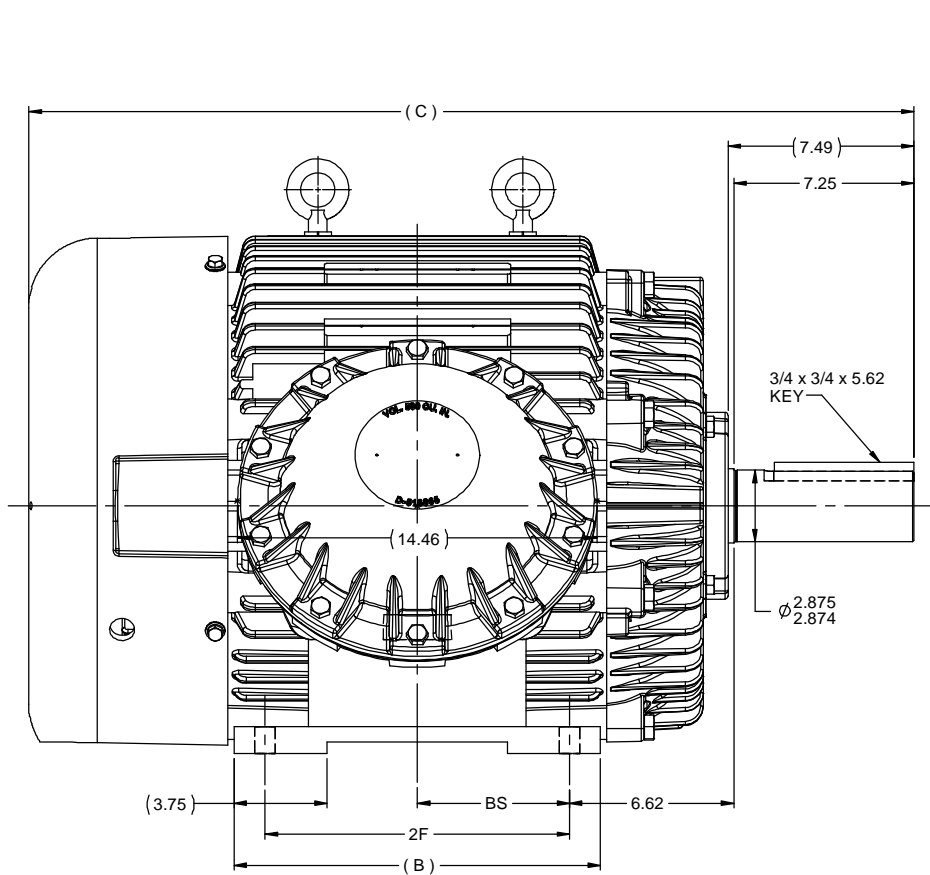


Nameplate Specifications

Output HP	60 Hp	Output KW	45.0 kW
Frequency	60 Hz	Voltage	230/460 V
Current	144.0/72.0 A	Speed	1185 rpm
Service Factor	1.15	Phase	3
Efficiency	94.5 %	Duty	Continuous
Insulation Class	F	Design Code	B
KVA Code	G	Frame	404T
Enclosure	Explosion Proof Fan cooled	Overload Protector	No
Ambient Temperature	40 °C	Drive End Bearing Size	6316
Opp Drive End Bearing Size	6313	UL	No
CSA	N	CE	N
IP Code	54		

Technical Specifications

Electrical Type	Squirrel Cage Inverter Rated	Starting Method	Line Or Inverter
Poles	6	Rotation	Reversible
Mounting	Rigid base	Motor Orientation	HORIZONTAL
Drive End Bearing	BALL	Opp Drive End Bearing	BALL
Frame Material	Cast Iron	Shaft Type	T
Overall Length	35.62 in	Frame Length	15.25 in
Shaft Diameter	2.875 in	Shaft Extension	7.25 in
Assembly/Box Mounting	F1 ONLY		
Outline Drawing	B-SS518777LE-1525	Connection Diagram	A-EE7308AD

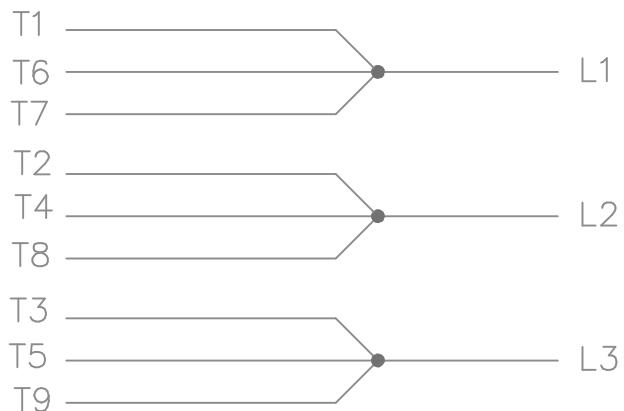


- NOTES:
 1. CONDUIT BOX CAN BE ROTATED IN 90° STEPS.
 2. CONDUIT BOX CAN BE MOUNTED ON OPPOSITE SIDE BY REMOVING BRACKETS AND TURNING FRAME 180°.
 3. NAMEPLATES TO BE READ FROM CONDUIT BOX SIDE OF MOTOR.

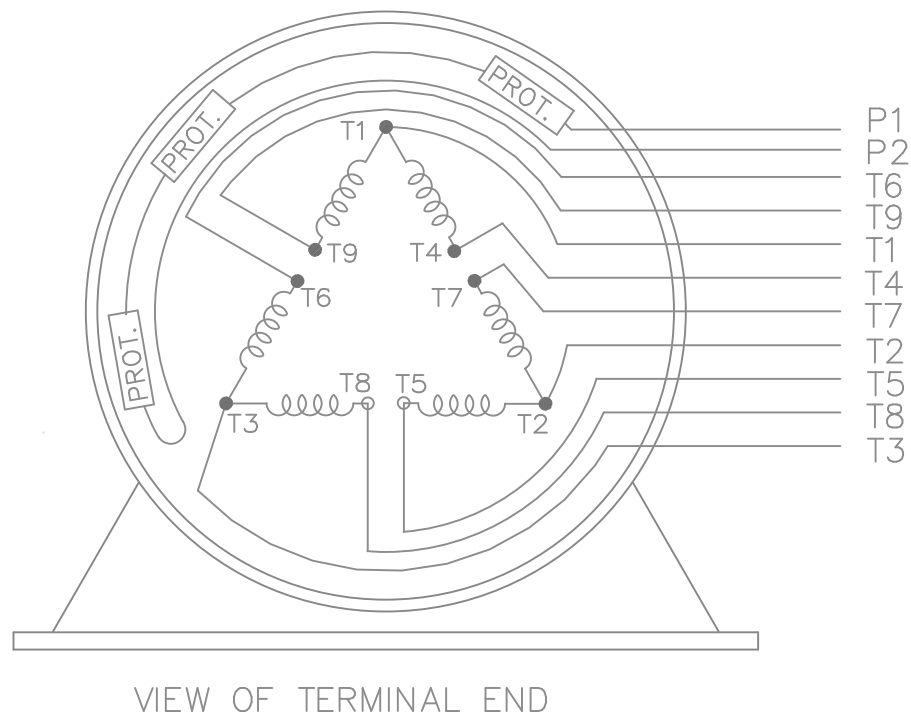
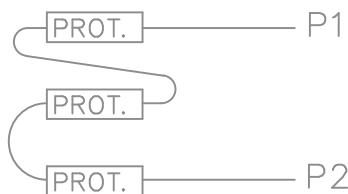
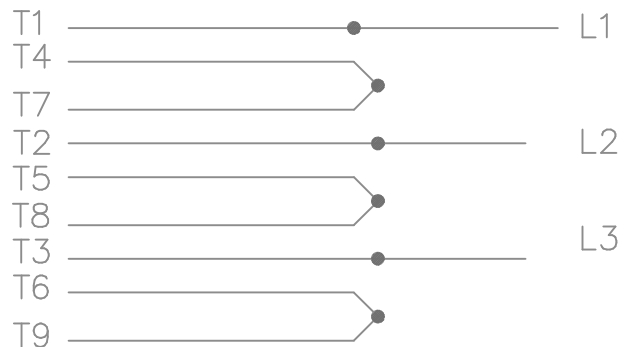
DASH	FRAME	B	C	2F	AB	AC	BS	OW
1525	404T	14.75	35.62	12.25	21.50	15.50	6.12	32.38
1675	405T	16.25	37.12	13.75	22.50	16.50	6.88	33.38

		TOLERANCES UNLESS SPECIFIED		ELECTRIC MOTORS GEARMOTORS AND DRIVES		DRAWN JJB 03-26-2012	
		DEC	INCHES			CHK NS 03-26-2012	
		X	±.1	TITLE OUTLINE 400T FR. - EXP. PR. - STD.		APPR MJS 03-26-2012	
		XX	±.03			SCALE 1:5	
		XXX	±.005	MATL		REF	
		XXXX	±.0005			FINISH	FMF MU107090
		CHK	ANG ±1/2°	PREV		PAGE OF	
NO		REVISION		BY & DATE		SIZE DRAWING NO	
		THIRD ANGLE PROJECTION		RFP 03-26-2012		B SS518777LE	
				NETWORK FILE NAME SS518777LE		REV	

LOW VOLTAGE



HIGH VOLTAGE



WHEN MORE THAN ONE PROT. IS USED; PROT. ARE CONNECTED IN SERIES

				TOLERANCES UNLESS SPECIFIED		MARATHON ELECTRIC	DRAWN MJD 12-19-1997				
				DEC.	INCHES		CHK	ML	01-07-1998		
				.X	±.1	TITLE CONNECTION DIAGRAM 3φ - WITH PROTECTORS	SCALE				
				.XX	±.02		REF				
8	HIGH VOLT. SCHEMATIC WAS L1, L3 & L3	CN 32724	DRS 06-12-2004	ML	.XXX	±.005	FMF				
7	REDRAWN ON CADD		MJD 01-07-1998		.XXXX	±.0005	PREV				
NO.	REVISION		BY & DATE	CHK	ANG	±'30"	FINISH				
THIS DRAWING IN DESIGN AND DETAIL IS OUR PROPERTY AND MUST NOT BE USED EXCEPT IN CONNECTION WITH OUR WORK ALL RIGHTS OF DESIGN AND INVENTION ARE RESERVED THIS IS AN ELECTRONICALLY GENERATED DOCUMENT - DO NOT SCALE THIS PRINT				RFP	CAD FILE ee7308ad		SIZE	DRAWING NO.	PAGE	OF	REV.
				DIST	WA-LB		A	EE7308AD			8



P.O. BOX 8003
WAUSAU, WI 54401-8003
PH. 715-675-3311

DATA VOLTS: 460

CERTIFICATION DATA SHEET

CONN. DIAGRAM: A-EET7308AD
OUTLINE: B-SS51877LE-1525
WINDING: T404640

CAT #: 825416.00

NONE 1

TYPICAL MOTOR PERFORMANCE DATA

HP	KW	SYNC RPM	FL RPM	FRAME	ENCLOSURE	TYPE	KVA CODE	DESIGN	
60	45	1200	1185	404T	TEFC	TFS	G	BC	
PH	HZ	VOLTS	AMPS	START TYPE	DUTY	INSL	S.F.	AMB	ELEV.
3	60	230/460	144/72	LINE OR INVERTER	CONT	F	1.15	40	3300
F.L. EFF	94.5	3/4 LD EFF	95.0	1/2 LD EFF	95.0	GTD EFF	94.1	ELECT. TYPE	
F.L. PF	83.0	3/4 LD PF	78.5	1/2 LD PF	70.0	SQ CAGE INVERTED			
F.L. TORQUE	LR AMPS @ 460 V	L.R. TORQUE	B.D. TORQUE	F.L. RISE (°C)					
266 LB-FT	435	535 LB-FT	201%	650 LB-FT	244%	60			
PRESSURE @ 3	POWER	ROTOR WK²	MAX. LOAD WK²	SAFE STALL TIME	STARTS/HOUR	MOTOR WGT			
68 DBA	77 DBA	33.5 LB-FT²	1000 LB-FT²	25 SEC.	2	1125 LB.			

*** SUPPLEMENTAL INFORMATION ***

DE BRACKET TYPE	ODE BRACKET TYPE	MOUNT TYPE	MOTOR ORIENTATION	SEVERE DUTY	HAZARDOUS LOCATION	DRIIP COVER	SCREENS	PAINT
STANDARD	STANDARD	RIGID	HORIZONTAL	UM SEVERE	CL I GR C&D CL II GR	NO	NONE	BLUE (EPOXY)
BEARINGS	GREASE	SHAFT TYPE	SPECIAL DE	SPECIAL ODE	SHAFT	MATERIAL	FRAME MATERIAL	
DE	ODE							
BALL	POLYREX EM	T	NONE	NONE	1045 HOT ROLLED (C-204)		CAST IRON	
6316	6313							
THERMOSTATS	PROTECTORS	WDG RTD's	BRG RTD's	THERMISTORS	CONTROL	SPACE HEATERS		
TSTATS (N/C)	NOT	NONE	NONE	NONE	FALSE	NA		
R1 (ohms/ph)	R2 (ohms/ph)	X1 (ohms/ph)	X2 (ohms/ph)	Xm (ohms/ph)	VIBRATION (in/sec)	FLOAT		
0.071	0.043	0.394	0.527	9.545	0.080	ODE		

INVERTER TORQUE: CONSTANT 10:1
INV. HP SPEED RANGE: 1.5 X BASE SPEED

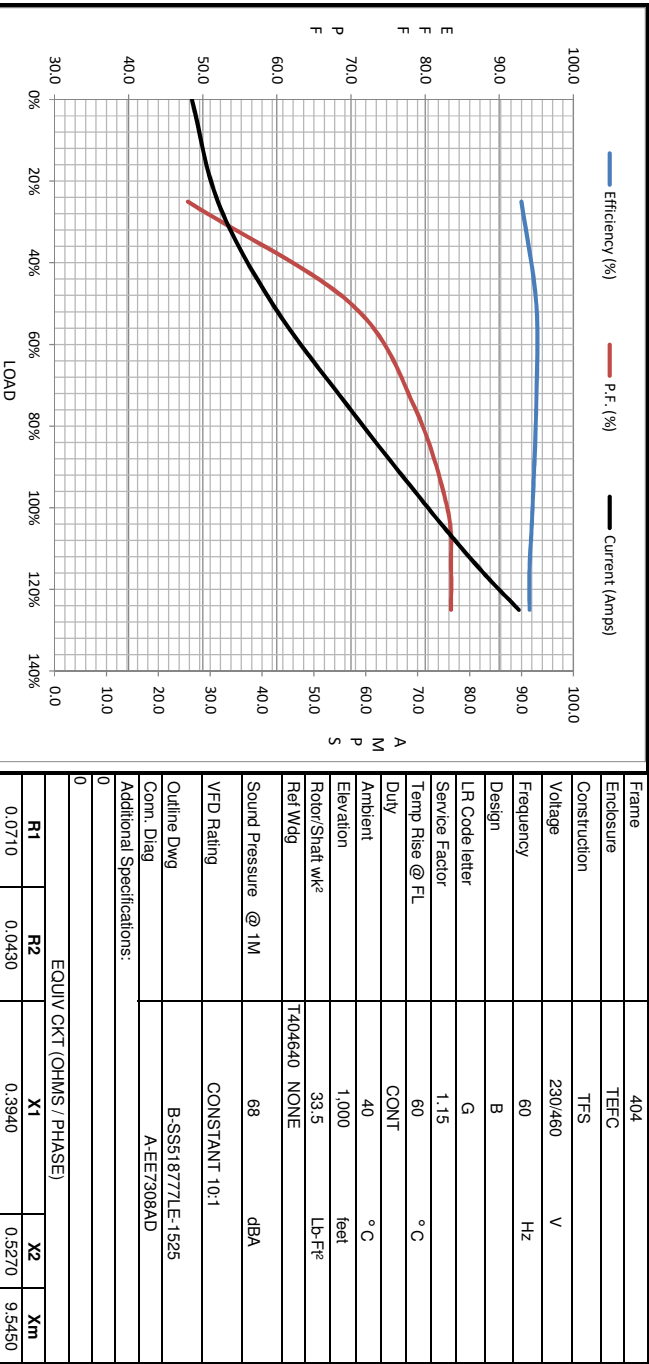
ENCODER: NONE
BRAKE: NONE
FT-LB: NONE
VOLTAGE: NONE
UL: NONE

DATE:	1/19/2018	DATE:	
UL:	NONE	HZ:	



Motor Load Data						
Load	0%	25%	50%	75%	100%	LR
Current (Amps)	26.5	31.5	42.0	56.5	72.0	435
Torque (ft-lb)	0.00	65.5	132	199	266	333
RPM	1200	1196	1194	1188	1185	0
Efficiency (%)		93.0	95.0	95.0	94.5	94.1
P.F. (%)	4.5	48.0	70.0	78.5	83.0	83.5

Motor Speed Data						Information Block																					
Speed (RPM)	LR	Pull-Up	BD	Rated	Idle	HP	Sync. RPM	Frame	Enclosure	Construction	Voltage	Frequency	Design	LR Code letter	Service Factor	Temp Rise @ FL	Duty	Ambient	Elevation	Rotor/Shaft wk ²	Ref Wdg	Sound Pressure @ 1M	VFD Rating	Outline Dwg	Conn. Diag	Additional Specifications:	
0	600	1050	1185	1200	1200	60.0	1200	404	TEFC	TFS	230/460	60	B	G	1.15	60	CONT	40 °C	1,000	33.5	LB-Fr ^e	68	CONSTANT 10:1	B-SS51877LE-1525	A-EE7308AD		
435	390	240	72.0	26.5	26.5																						
Torque (ft-lb)	535	475	650	266	0.00																						



EQUIV CKT (OHMS / PHASE)			
R1	R2	X1	X2
0.0710	0.0430	0.3940	0.5270
			Xm
			9.5450

