

PRODUCT INFORMATION PACKET



Model No: 445TTGN16596AA

Catalog No: 825419.00

..125HP..1200RPM.445T.EPFC.460V.3PH.60HZ.CONT.40C.1.0SF.RIGID.....EXPLOSION PROOF.....

Explosion Proof



Regal and Leeson are trademarks of Regal Beloit Corporation or one of its affiliated companies.

©2018 Regal Beloit Corporation, All Rights Reserved. MC017097E



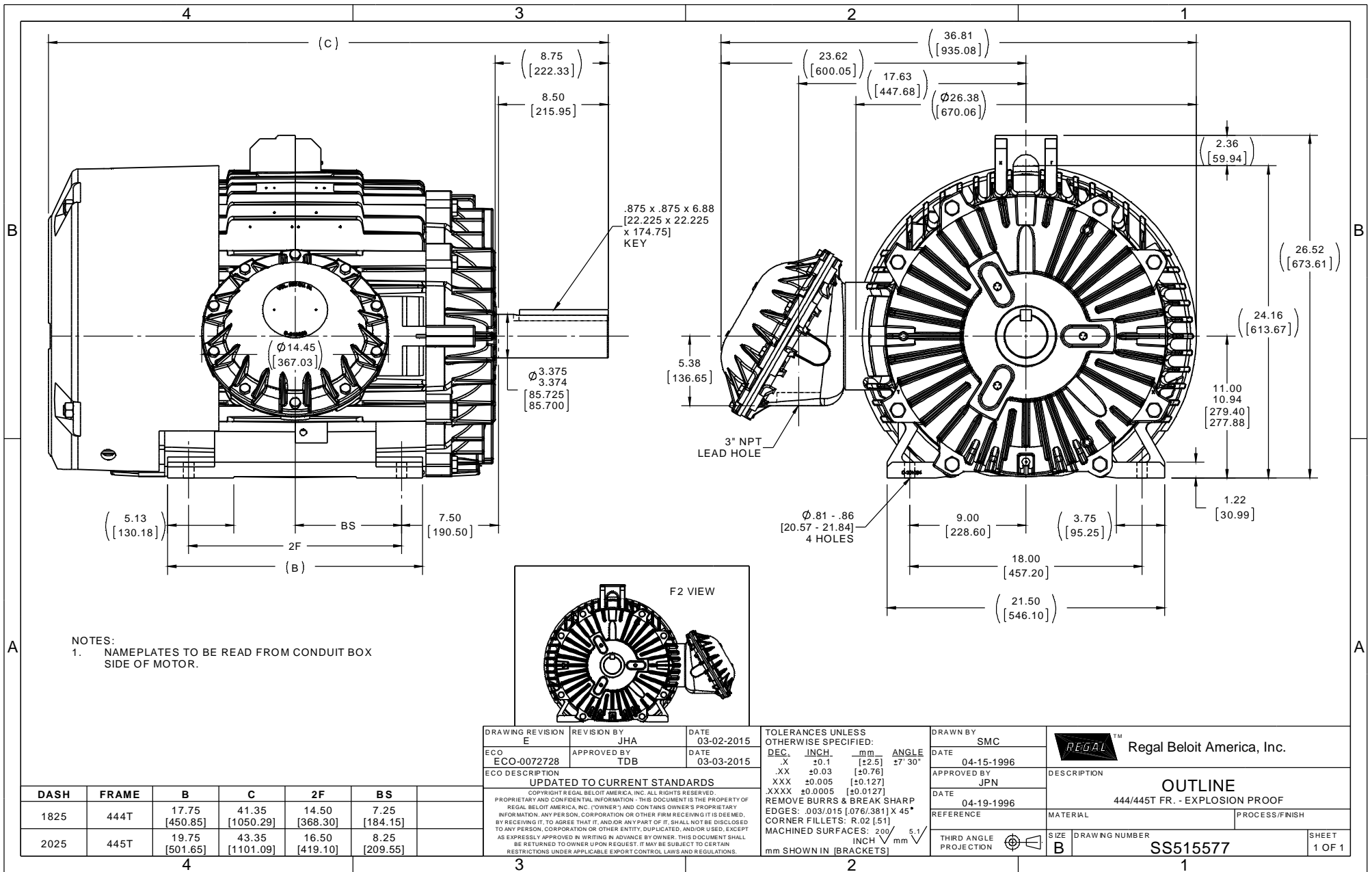


Nameplate Specifications

Output HP	125 Hp	Output KW	93.0 kW
Frequency	60 Hz	Voltage	460 V
Current	154.0 A	Speed	1188 rpm
Service Factor	1.15	Phase	3
Efficiency	95 %	Duty	Continuous
Insulation Class	F	Design Code	B
KVA Code	G	Frame	445T
Enclosure	Explosion Proof Fan cooled	Overload Protector	No
Ambient Temperature	40 °C	Drive End Bearing Size	NU318
Opp Drive End Bearing Size	6316	UL	No
CSA	N	CE	N
IP Code	54		

Technical Specifications

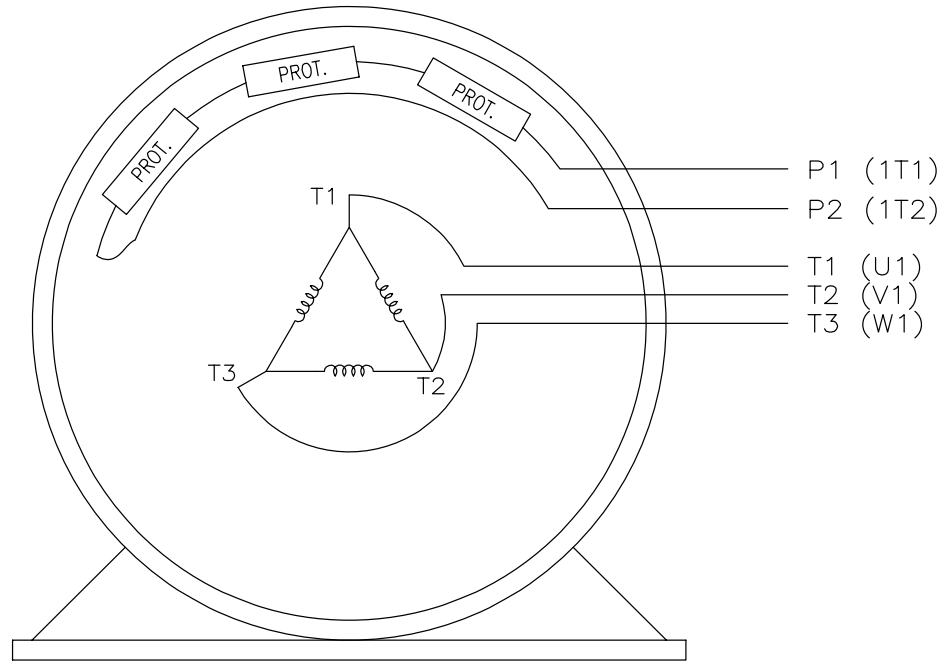
Electrical Type	Squirrel Cage Induction Run	Starting Method	Across The Line
Poles	6	Rotation	Reversible
Mounting	Rigid base	Motor Orientation	HORIZONTAL
Drive End Bearing	ROLLER	Opp Drive End Bearing	BALL
Frame Material	Cast Iron	Shaft Type	T
Overall Length	43.35 in	Frame Length	20.25 in
Shaft Diameter	3.375 in	Shaft Extension	8.5 in
Assembly/Box Mounting	F1 ONLY		
Outline Drawing	B-SS515577-2025	Connection Diagram	A-EE7300S



EE7300S

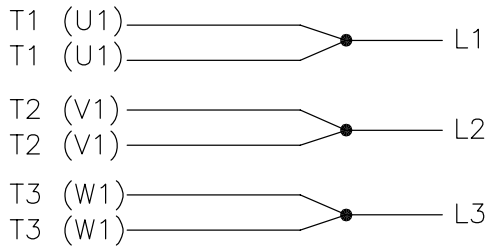
THREE PHASE – SINGLE VOLTAGE MOTOR

TO REVERSE ROTATION:
INTERCHANGE ANY TWO LINE
LEAD CONNECTIONS



VIEW OF TERMINAL END

IF MOTOR HAS MULTIPLE
T'S PER LEAD CONNECT
TOGETHER LIKE T'S



A-9806 DECAL

NO.	REVISION	BY & DATE	CHK	TOLERANCES UNLESS SPECIFIED		FINISH	DRAWN	PAGE	OF	REV.
				DEC.	INCHES					
F	UPDATED TITLE BLOCK	HV 02-27-2014	EWB	.X	± -		KL	12-15-1999		
3	REMOVED "N.C." FROM PROT.'S MU61770	JJB 08-02-2010		.XX	± -		CHK	DJK 12-15-1999		
2	ADDED IEC MARKINGS MU61770	KL 09-16-2004	EAB	.XXX	± -	TITLE CONNECTION DIAGRAM – EXTERNAL SINGLE VOLTAGE 3Ø MOTOR	APPD	DJK 12-15-1999	SCALE	1=1
1	NEW DRAWING	KL 12-16-1999		.XXXX	± -	MAT'L.			REF	
				ANG	± -				FMF	
									PREV	
THIS DRAWING IN DESIGN AND DETAIL IS OUR PROPERTY AND MUST NOT BE USED EXCEPT IN CONNECTION WITH OUR WORK ALL RIGHTS OF DESIGN AND INVENTION ARE RESERVED THIS IS AN ELECTRONICALLY GENERATED DOCUMENT – DO NOT SCALE THIS PRINT						RFP	CAD FILE	ee7300s	SIZE	A
						DIST	WA-LB-SB	DRAWING NO.	EE7300S	





CERTIFICATION DATA SHEET

P.O. BOX 8003
WAUSAU, WI 54401-8003
PH. 715-675-3311

DATA VOLTS: 460

CONN. DIAGRAM: A-EET300S
OUTLINE: B-SS515577-2025
WINDING: T4456178

CAT #: 825419.00

NONE 1

TYPICAL MOTOR PERFORMANCE DATA

HP	KW	SYNC RPM	FL RPM	FRAME	ENCLOSURE	TYPE	KVA CODE	DESIGN	
125	93	1200	1188	445T	TEFC	TFN	G	B	
PH	HZ	VOLTS	AMPS	START TYPE	DUTY	INSL	S.F.	AMB	ELEV.
3	60	460	154	ACROSS THE LINE	CONT	F	1.15	40	3300
F.L. EFF	F.L. PF	3/4 LD EFF	3/4 LD PF	1/2 LD EFF	1/2 LD PF	GTD EFF	ELECT. TYPE		
95.0	80.0	95.0	75.0	94.5	65.0	94.5	SO CAGE IND RUN		
F.L. TORQUE	LR AMPS @ 460 V	L.R. TORQUE	B.D. TORQUE	F.L. RISE (°C)					
552 LB-FT	907	950 LB-FT	1,400 LB-FT	75					
PRESSURE @ 3	POWER	ROTOR WK²	MAX. LOAD WK²	SAFE STALL TIME	STARTS/HOUR	MOTOR WGT			
72 DBA	81 DBA	67.0 LB-FT²	2250 LB-FT²	25 SEC.	2	2250 LB.			

*** SUPPLEMENTAL INFORMATION ***

DE BRACKET TYPE	ODE BRACKET TYPE	MOUNT TYPE	MOTOR ORIENTATION	SEVERE DUTY	HAZARDOUS LOCATION	DRIIP COVER	SCREENS	PAINT	
STANDARD	STANDARD	RIGID	HORIZONTAL	UM SEVERE/F CL I GR C&D CL II GR		NO	NONE	BLUE (EPOXY)	
BEARINGS	GREASE	SHAFT TYPE	SPECIAL DE	SPECIAL ODE	SHAFT	MATERIAL	FRAME MATERIAL		
ROLLER BALL NU318	POLYREX EM 6316	T	NONE	NONE	1045 HOT ROLLED (C-204)		CAST IRON		

THERMOSTATS	PROTECTORS	WDG RTD's	BRG RTD's	THERMISTORS	CONTROL	SPACE HEATERS
TSTATS (N/C)	NOT	NONE	NONE	NONE	FALSE	NA
R1 (ohms/ph)	R2 (ohms/ph)	X1 (ohms/ph)	X2 (ohms/ph)	Xm (ohms/ph)	VIBRATION (in/sec)	FLOAT
0.023	0.017	0.173	0.222	3.973	0.080	NONE

* N O T E S *		INVERTER TORQUE: NONE	
		INV. HP SPEED RANGE: NONE	
		ENCODER: NONE	
		BRAKE: NONE	
		FT-LB: NONE	
		VOLTAGE: NONE	
		NONE PPR	

DATE: 1/18/2018	UL: NONE	HZ:
-----------------	----------	-----

Date: 1/18/2018

825419.00

Data Sheet



Data @ 460 V

Motor Load Data

Load	0%	25%	50%	75%	100%	115%	125%	LR
Current (Amps)	65.0	75.0	95.0	122	154	173	187	907
Torque (ft-lb)	0.00	137	275	414	552	636	692	950
RPM	1200	1196	1194	1192	1188	1186	1184	0
Efficiency (%)		91.7	94.5	95.0	95.0	95.0	94.5	
P.F. (%)	3.5	43.0	65.0	75.0	80.0	82.0	82.5	30.0

Motor Speed Data

LR	Pull-Up	BD	Rated	Idle	Information Block			
0	600	1150	1188	1200	HP	125.0		
907	800	550	154	65.0	Sync. RPM	1200		
950	775	1,400	552	0.00	Frame	445		
					Enclosure	TEFC		
					Construction	TFN		
					Voltage	460	V	
					Frequency	60	Hz	
					Design	B		
					LR Code letter	G		
					Service Factor	1.15		
					Temp Rise @ FL	75	°C	
					Duty	CONT		
					Ambient	40	°C	
					Elevation	1,000	feet	
					Rotor/Shaft wk ²	67.0	lb-Ft ²	
					Ref Wdg	T4456178	NONE	
					Sound Pressure @ 1M	72	dB(A)	
					VFD Rating	NONE		
					Outline Dwg	B-SS515577-2025		
					Conn. Diag	A-EET300S		
					Additional Specifications:			
					R1	R2	X1	X2
					0.0230	0.0170	0.1730	0.2220
								Xm
								3.9730

