

PRODUCT INFORMATION PACKET



Model No: 101013.00
Catalog No: 101013.00
0.33 HP General Purpose Motor, 3 phase, 3600 RPM, 208-230/460 V, 48 Frame, TENV
Three Phase TENV Motors



Regal and Leeson are trademarks of Regal Beloit Corporation or one of its affiliated companies.
©2020 Regal Beloit Corporation, All Rights Reserved. MC017097E





Nameplate Specifications

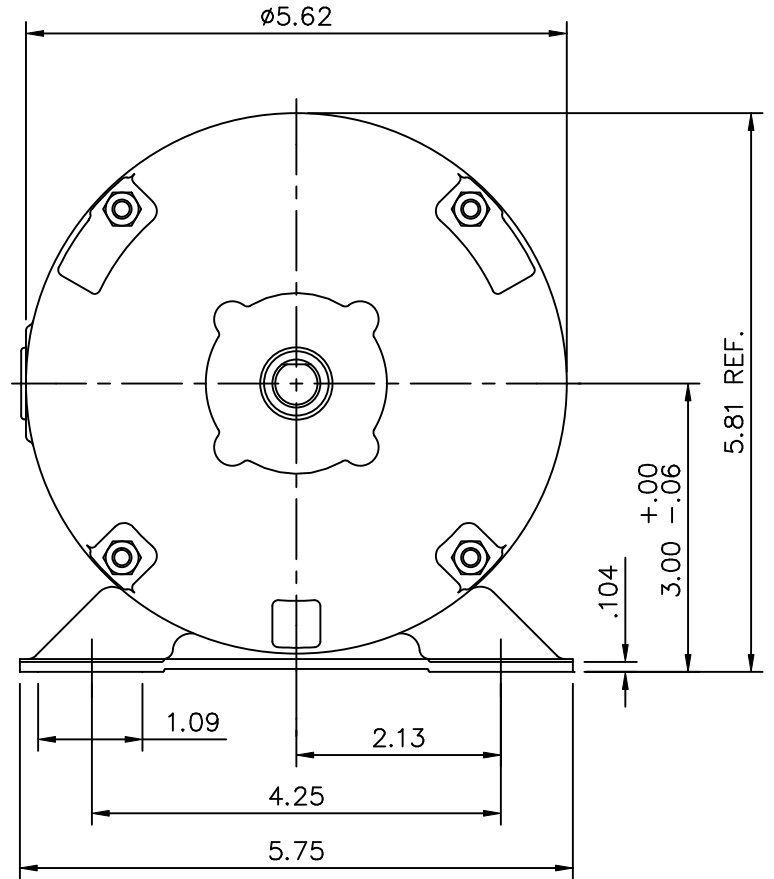
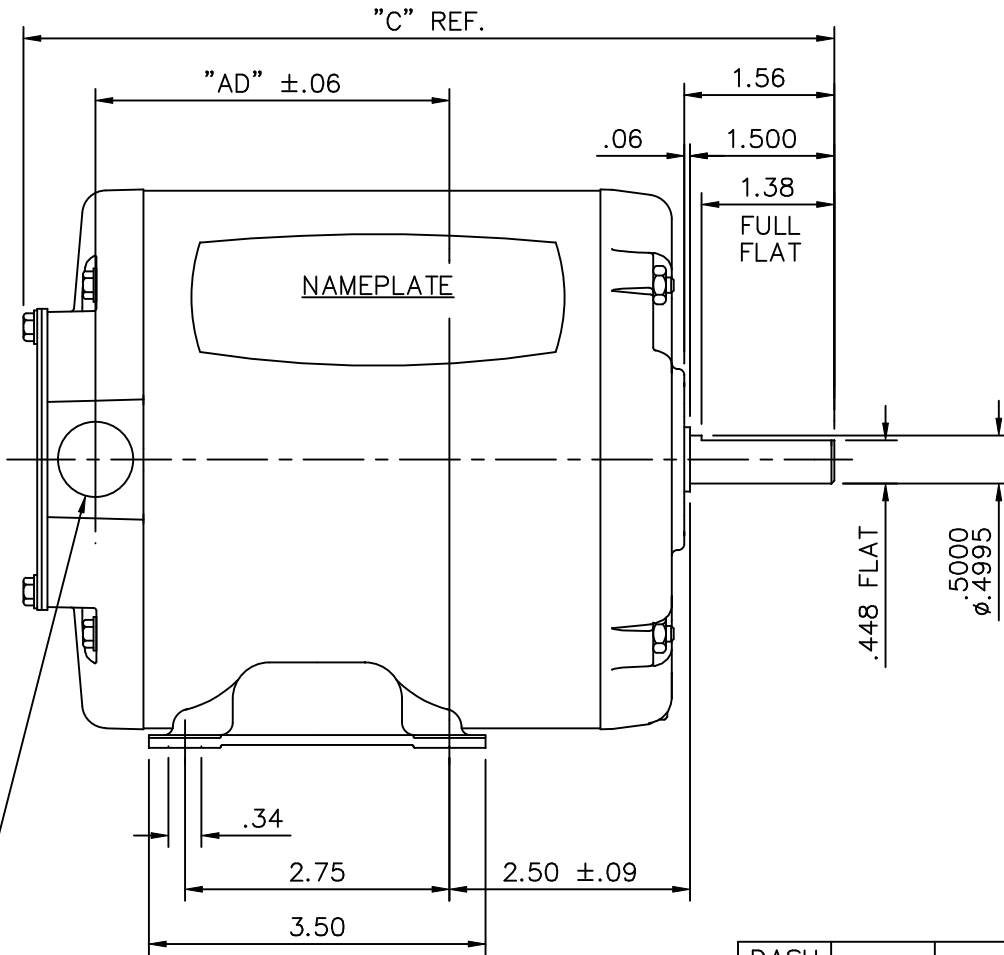
Output HP	0.33 Hp	Output KW	0.25 kW
Frequency	60 Hz	Voltage	208-230/460 V
Current	1.2-1.2/0.60 A	Speed	3450 rpm
Service Factor	1.15	Phase	3
Efficiency	72 %	Power Factor	72
Duty	Continuous	Insulation Class	B
Design Code	NO DESIGN CODE	KVA Code	N
Frame	48	Enclosure	Totally Enclosed Non Ventilated
Thermal Protection	No	Ambient Temperature	40 °C
Drive End Bearing Size	6203	Opp Drive End Bearing Size	6203
UL	Recognized	CSA	Y
CE	N	IP Code	43

Technical Specifications

Electrical Type	Squirrel Cage Induction Run	Starting Method	Across The Line
Poles	2	Rotation	Reversible
Resistance Main	0 Ohms	Mounting	Rigid base
Motor Orientation	Horizontal	Drive End Bearing	Ball
Opp Drive End Bearing	Ball	Frame Material	Rolled Steel
Shaft Type	NEMA 48	Overall Length	8.62 in
Frame Length	5.00 in	Shaft Diameter	0.500 in
Shaft Extension	1.5 in	Assembly/Box Mounting	F1 ONLY
Connection Drawing	005010.01	Outline Drawing	031804-500

This is an uncontrolled document once printed or downloaded and is subject to change without notice. Date Created:14/10/2020


031804



DASH NO.	"C"	"AD"
450	8.12	3.43
475	8.37	3.68
500	8.62	3.93
525	8.87	4.18
550	9.12	4.43
575	9.37	4.68
600	9.62	4.93

1/2-14 NPT
CONDUIT HOLE
(PLUGGED)

GASKETS THROUGHOUT

				TOLERANCES UNLESS SPECIFIED		 ELECTRIC MOTORS GEARMOTORS AND DRIVES	DRAWN PG 02/17/05			
				DEC.	INCHES		CHK			
				.X	±.1		APPD PG 02/17/05			
				.XX	±.03		SCALE 1=2			
				.XXX	±.005		REF 031086			
				.XXXX	±.0005	TITLE	OUTLINE - 48 FRAME RIGID MOUNT - TENV			
						MAT'L.	FMF 101013.00			
NO.	REVISION	BY & DATE	CHK	ANG	±1/2"	FINISH	PREV			
THIS DRAWING IN DESIGN AND DETAIL IS OUR PROPERTY AND MUST NOT BE USED EXCEPT IN CONNECTION WITH OUR WORK ALL RIGHTS OF DESIGN AND INVENTION ARE RESERVED THIS IS AN ELECTRONICALLY GENERATED DOCUMENT - DO NOT SCALE THIS PRINT				RFP		CAD FILE	031804	SIZE	DRAWING NO.	REV.
				DIST				A	031804	

005010-01

VIEW FROM OUTSIDE OF MOTOR AT SWITCH END.



VOLTAGE	L1	L2	L3	JOIN & INSULATE
HIGH	T1	T2	T3	(T4,T7) (T5,T8) (T6,T9)
LOW	T1,T7	T2,T8	T3,T9	T4,T5,T6

				TOLERANCES UNLESS SPECIFIED		Regal Beloit America, Inc.		DRAWN RDW 04/12/02				
				DEC.	INCHES			CHK				
				.X	±.1			APPD				
				.XX	±.01			SCALE 1=1				
				.XXX	±.005	TITLE		REF FIG.2-51				
A	UPDATED TO REGAL LOGO			SAJ	06/26/15	AJY	.XXXX	±.0005	MAT'L. DECAL - 004014	FMF		
NO.	REVISION			BY & DATE	CHK	ANG	±1/2"	FINISH	PREV			
THIS DRAWING IN DESIGN AND DETAIL IS OUR PROPERTY AND MUST NOT BE USED EXCEPT IN CONNECTION WITH OUR WORK ALL RIGHTS OF DESIGN AND INVENTION ARE RESERVED THIS IS AN ELECTRONICALLY GENERATED DOCUMENT - DO NOT SCALE THIS PRINT				RFP	04/12/02		CAD FILE	00501001		SIZE	DRAWING NO.	REV.
				DIST	BRF-NLV			A	005010-01		A	



1051 CHEYENNE AVE.
 GRAFTON, WI 53024
 PH. 262-377-8810

CERTIFICATION DATA SHEET

CONN. DIAGRAM: 005010.01

CATALOG #: 101013.00

OUTLINE: 031804-500

MOUNTING: F1 ONLY

WINDING #: T55234 NR 3 A

TYPICAL MOTOR PERFORMANCE DATA

HP	KW	SYNC. RPM	F.L. RPM	FRAME	ENCLOSURE	KVA CODE	DESIGN
1/3&1/3	0.25&0.25	3600	3450&2850	48	TENV	N	NO DESIGN CODE

PH	Hz	VOLTS	AMPS	START TYPE	DUTY	INSL	S.F.	AMB°C
3	60/50	208-230/460&208-230/460	1.2-1.2/6&1.5-1.4/7	ACROSS THE LINE	CONTINUOUS	B4	1.15/1.15	40

FULL LOAD EFF:	72&72	3/4 LOAD EFF:	69.4	1/2 LOAD EFF:	59.5	GTD. EFF	0	ELEC. TYPE
FULL LOAD PF:	72&64	3/4 LOAD PF:	72.6	1/2 LOAD PF:	65.1	0	SQ CAGE IND RUN	

F.L. TORQUE	LOCKED ROTOR AMPS	L.R. TORQUE	B.D. TORQUE	F.L. RISE°C
8 OZ-FT	10 / 5	27.5 OZ-FT	344 %	38.5 OZ-FT
				481 %
				0

SOUND PRESSURE @ 3 FT.	SOUND POWER	ROTOR WK^2	MAX. WK^2	SAFE STALL TIME	STARTS / HOUR	APPROX. MOTOR WGT
0 DBA	10 DBA	0.015 LB-FT^2	0 LB-FT^2	10 SEC.	0	0 LBS.

*** SUPPLEMENTAL INFORMATION ***

DE BRACKET TYPE	ODE BRACKET TYPE	MOUNT TYPE	ORIENTATION	SEVERE DUTY	HAZARDOUS LOCATION	DRIP COVER	SCREENS	PAINT
STANDARD	STANDARD	RIGID	HORIZONTAL	FALSE	NONE	FALSE	NONE	BLUE - LEESON (ENAMEL)

BEARINGS DE ODE	GREASE	SHAFT TYPE	SPECIAL DE	SPECIAL ODE	SHAFT MATERIAL	FRAME MATERIAL
BALL BALL	POLYREX EM	STANDARD 48	NONE	NONE	1144 STRESSPROOF (C-223)	ROLLED STEEL

THERMO-PROTECTORS				THERMISTORS	CONTROL	SPACE HEATERS
THERMOSTATS	PROTECTORS	WDG RTDS	BRG RTDS	NONE	FALSE	NONE
NONE	NOT	NONE	NONE	NONE	FALSE	NONE

*

INVERTER TORQUE: NONE
 INV. HP SPEED RANGE: NONE

N
 O
 T

ENCODER: NONE
 NONE NONE
 NONE NONE PPR

E
 T

BRAKE: NONE NONE
 NONE P/N NONE
 NONE NONE FT-LB NONE V NONE HZ

S



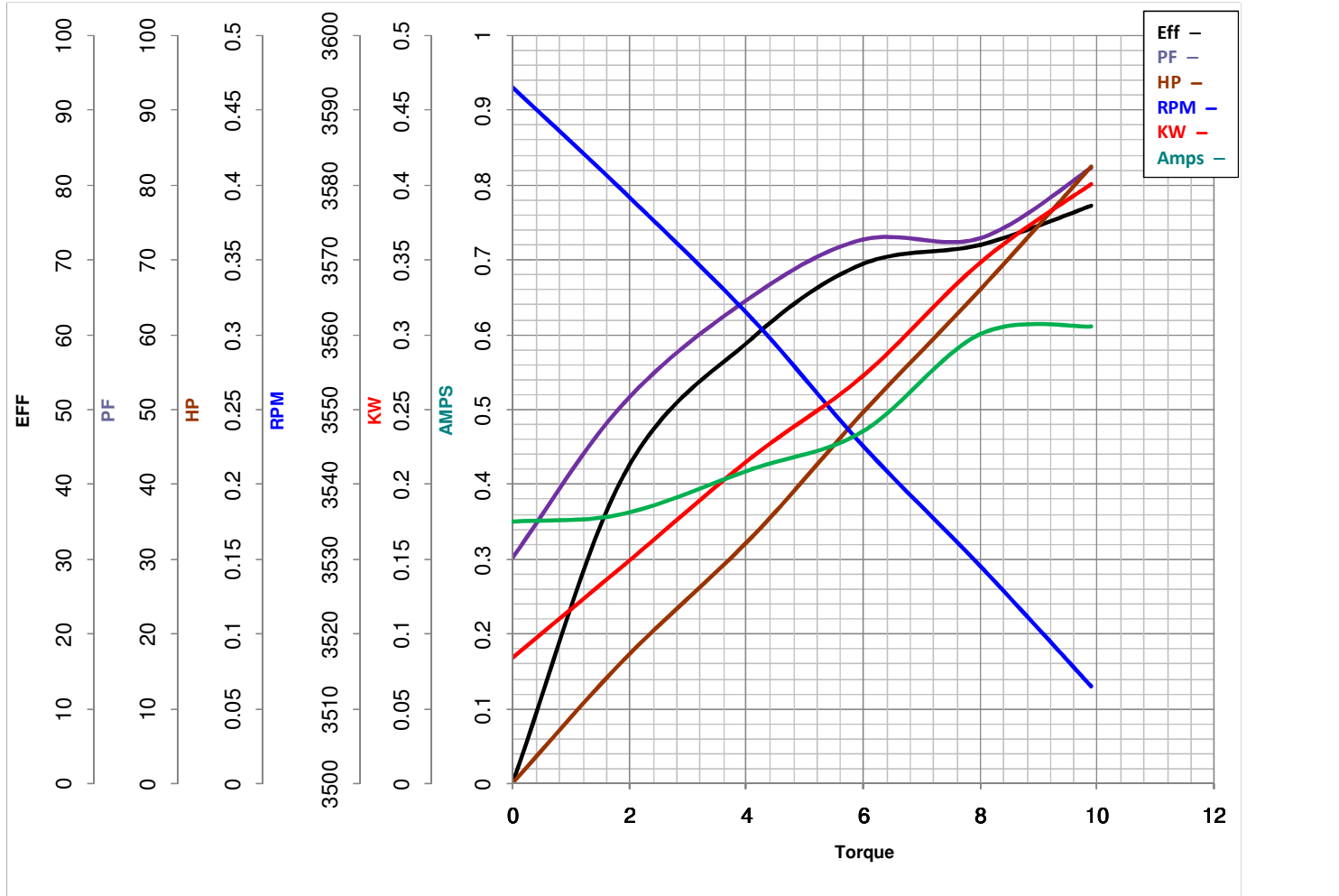
LEESON ELECTRIC CORPORATION
 TYPICAL PERFORMANCE CURVE for AC MOTOR

Model No 101013.00

Catalog No 101013.00

Curve at 460 Volts HP 0.33&0.33 PHASE 3
60 HZ
0.33 HP VOLTS 208-230/460&208-230/460

HZ 60&50 RPM 3450&2850



Torque in Oz.Ft

FL TORQUE 8 Oz.Ft
 BD TORQUE 38.5 Oz.Ft
 LR TORQUE 27.5 Oz.Ft

FL AMPS 1.2-1.2/.6
 PU TORQUE 26.0 Oz.Ft
 LR AMPS 5

WINDING T55234-3

Date 5/22/2018