

# PRODUCT INFORMATION PACKET



Model No: C4S46DJ1G

Catalog No: 101021.00

..1/3-.15HP..1725/1140RPM.S56.DP./115V.1PH.60HZ.CONT.40C.1.0SF.RESILIENT  
BASE.C4S46DJ1G.....FAN & BLOWER.NOT.....

2 Speed



Regal and Leeson are trademarks of Regal Beloit Corporation or one of its affiliated companies.

©2018 Regal Beloit Corporation, All Rights Reserved. MC017097E





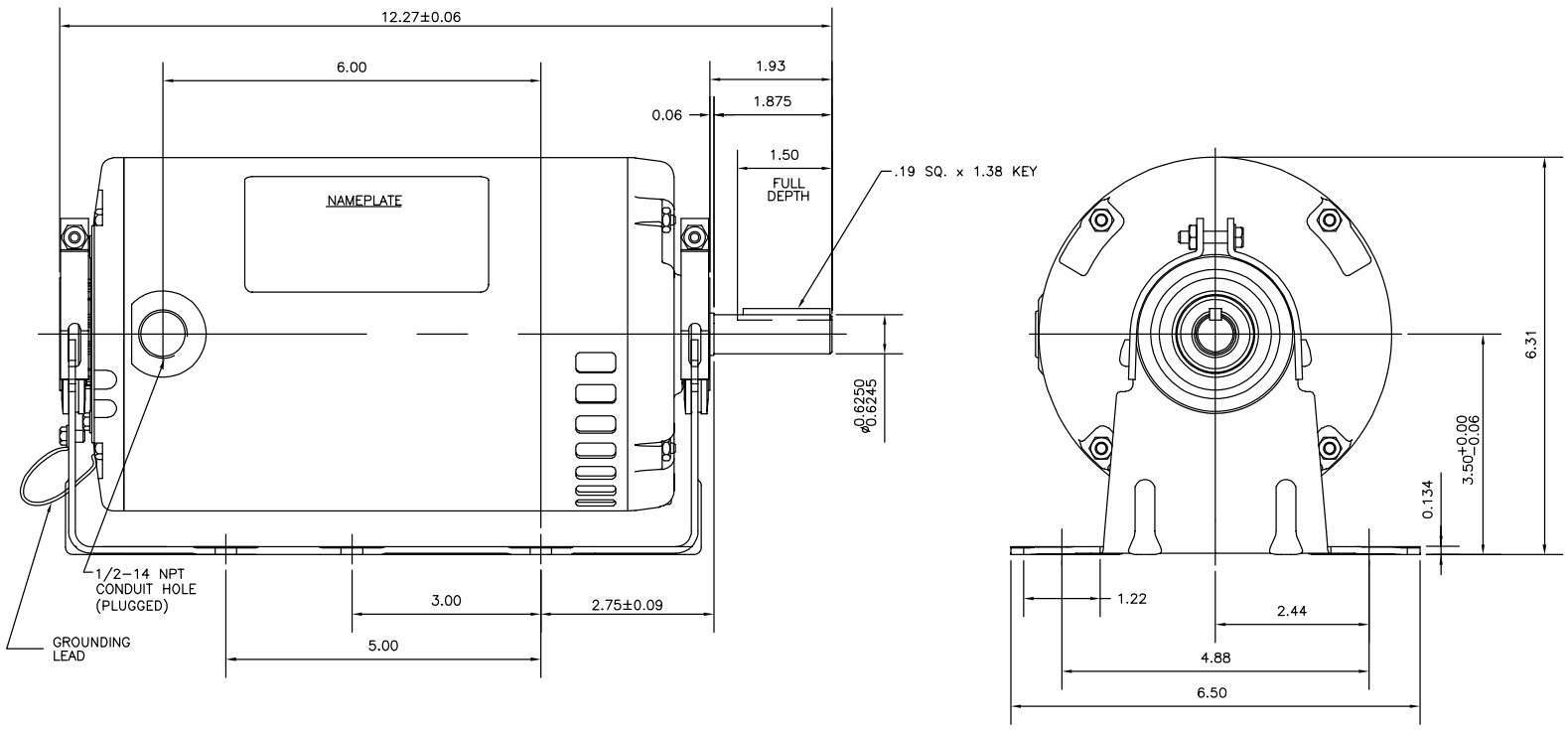
**Nameplate Specifications**

Output HP	<b>0.33,0.15 Hp</b>	Output KW	<b>0.25 kW</b>
Frequency	<b>60 Hz</b>	Voltage	<b>115 V</b>
Current	<b>5,4.6 A</b>	Speed	<b>1725,1140 rpm</b>
Service Factor	<b>1</b>	Phase	<b>1</b>
Efficiency	<b>64 %</b>	Duty	<b>Continuous</b>
Insulation Class	<b>B</b>	Design Code	<b>2VT</b>
KVA Code	<b>P</b>	Frame	<b>S56H</b>
Enclosure	<b>Drip Proof</b>	Overload Protector	<b>No</b>
Ambient Temperature	<b>40 °C</b>	Drive End Bearing Size	<b>6203</b>
Opp Drive End Bearing Size	<b>6203</b>	UL	<b>Recognized</b>
CSA	<b>Y</b>	CE	<b>N</b>
IP Code	<b>22</b>		

**Technical Specifications**

Electrical Type	<b>Split Phase</b>	Starting Method	<b>Across The Line</b>
Poles	<b>4//6</b>	Rotation	<b>Selective Counterclockwise</b>
Mounting	<b>Resilient Base</b>	Motor Orientation	<b>HORIZONTAL</b>
Drive End Bearing	<b>BALL</b>	Opp Drive End Bearing	<b>BALL</b>
Frame Material	<b>Rolled Steel</b>	Shaft Type	<b>T</b>
Overall Length	<b>12.27 in</b>	Frame Length	<b>8.00 in</b>
Shaft Diameter	<b>0.625 in</b>	Shaft Extension	<b>1.88 in</b>
Assembly/Box Mounting	<b>F1 ONLY</b>		
Outline Drawing	<b>OL101021</b>	Connection Diagram	<b>005480.01</b>

OL101021



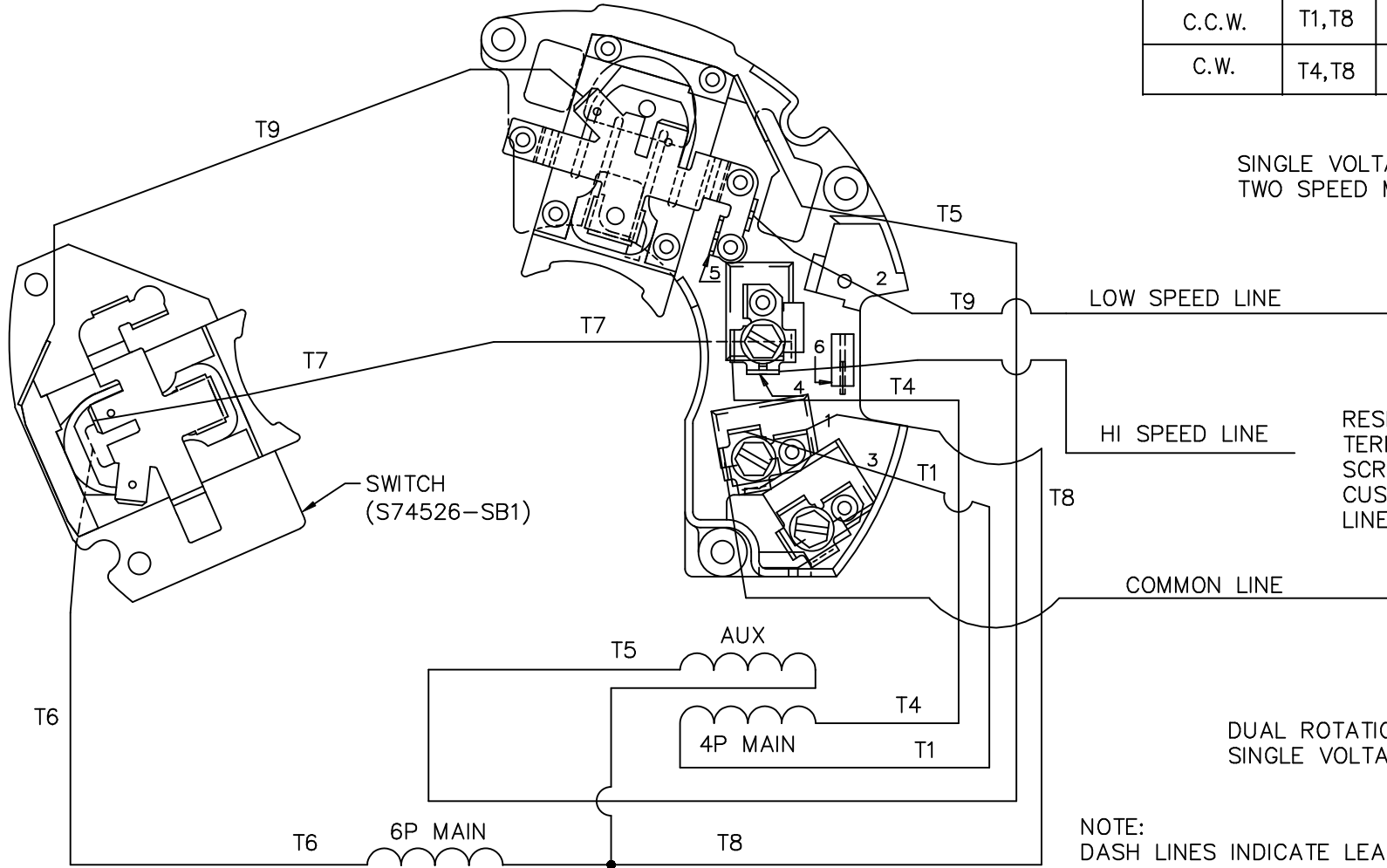
		TOLERANCES UNLESS SPECIFIED		LEESON ELECTRIC MOTORS GEARMOTORS AND DRIVES		DRAWN KMM 03/12/04	
		DEC.	INCHES			CHK	
		X	±.1			APPD	
		.XX	±.03	TITLE OUTLINE - S56H FRAME		SCALE	5=8
02	UPDATED PER ECO-0053237	PST	8/18/14	PI	.XXX ±.005	1 PHASE - RESILIENT MOUNT - DRIP PROOF	
01	FRAME DESIGNATION WAS S56	KMM	3/15/04		.JXXX ±.0005	REF	101021.00
NO.	REVISION	BY & DATE	CHK	ANG	±1/2'	FINISH	PREV
THIS DRAWING IN DESIGN AND DETAIL IS OUR PROPERTY AND MUST NOT BE USED EXCEPT IN CONNECTION WITH OUR WORK ALL RIGHTS OF DESIGN AND INVENTION ARE RESERVED THIS IS AN ELECTRONICALLY GENERATED DOCUMENT - DO NOT SCALE THIS PRINT				RFP	CAD FILE	OL101021	SIZE B
				DIST	DRAWING NO.	OL101021	REV. 02

VIEWING TERMINAL END

005480-01

ROTATION FACING LEAD END	L1	L2	
		HI SPEED	LOW SPEED
C.C.W.	T1,T8	T4,T7	T9
C.W.	T4,T8	T1,T7	T9

SINGLE VOLTAGE-SPLIT PHASE  
TWO SPEED MOTOR



RESERVE THESE  
TERMINALS AND  
SCREWS FOR  
CUSTOMER  
LINE CONNECTIONS

DUAL ROTATION  
SINGLE VOLTAGE

NOTE:  
DASH LINES INDICATE LEADS CONNECTED  
TO MOTOR SIDE OF SWITCH

				TOLERANCES UNLESS SPECIFIED		REGAL-BELOIT <i>Motor Technologies Group</i>		DRAWN KMM 03/12/04	
				DEC.	INCHES	TITLE		CHK	
				.X	±.1	EXTERNAL WIRING DIAGRAM 2 SPEED - DUAL ROTATION		APPD	
				.XX	±.01			SCALE 1=1	
				.XXX	±.005			REF EXPR040152	
				.XXXX	±.0005			FMF 101021.00	
NO.	REVISION	BY & DATE	CHK	ANG	±1/2'	FINISH	PREV		
			RFP			CAD FILE	00548001	SIZE	DRAWING NO.
			DIST				A	005480-01	REV.

THIS DRAWING IN DESIGN AND DETAIL IS OUR PROPERTY AND MUST NOT BE USED EXCEPT  
IN CONNECTION WITH OUR WORK ALL RIGHTS OF DESIGN AND INVENTION ARE RESERVED  
THIS IS AN ELECTRONICALLY GENERATED DOCUMENT - DO NOT SCALE THIS PRINT



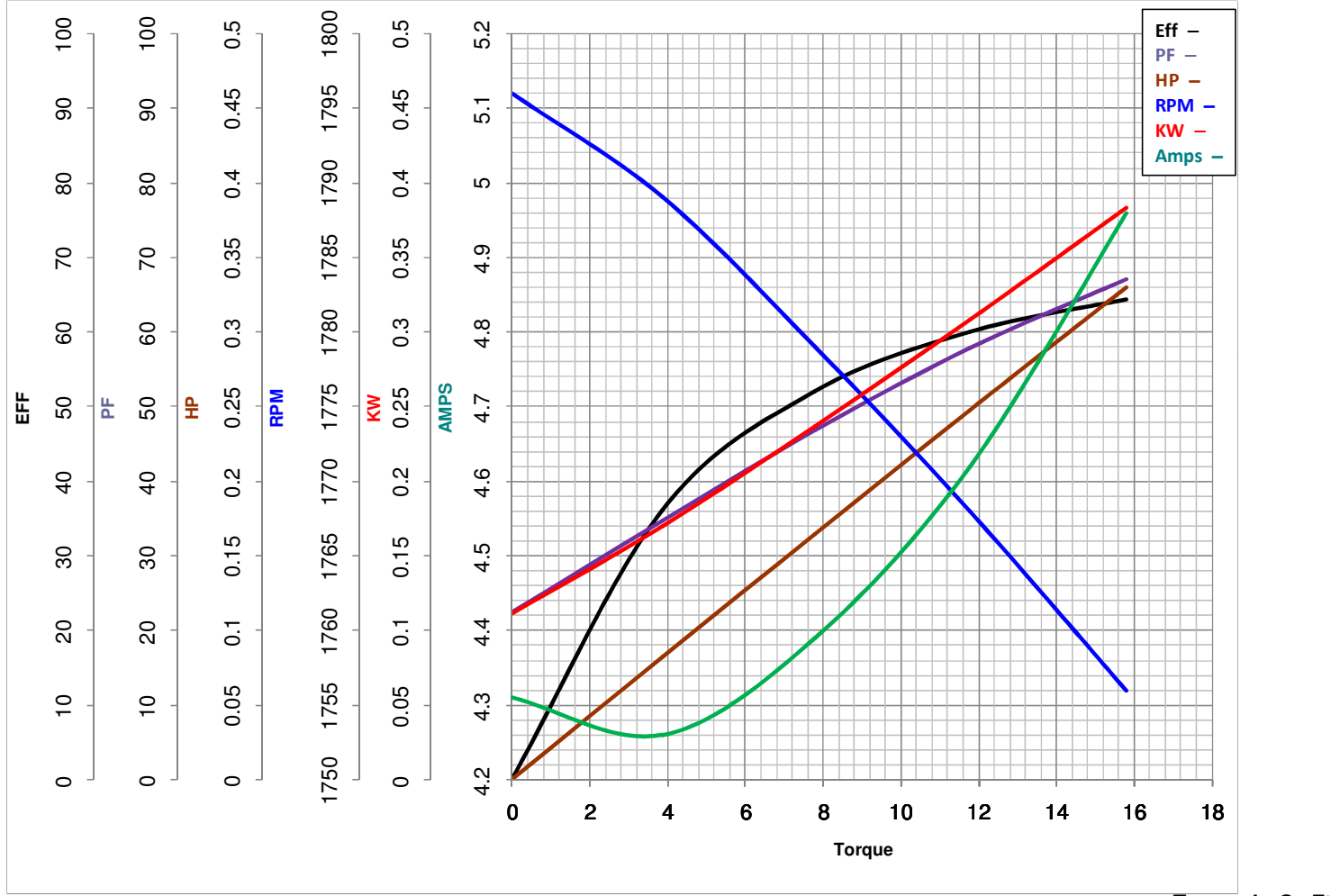
**LEESON ELECTRIC CORPORATION**  
TYPICAL PERFORMANCE CURVE for AC MOTOR

Model No 101021.00

Curve at 115 Volts      HP 0.33&0.15      PHASE 1  
60 HZ  
0.33 HP      VOLTS 115&115

Catalog No 101021.00

HZ 60&60      RPM 1725&1140



<b>FL TORQUE</b>	<u>15.79</u> Oz.Ft	<b>FL AMPS</b>	<u>5</u>
<b>BD TORQUE</b>	<u>45.6</u> Oz.Ft	<b>PU TORQUE</b>	<u>21.8</u> Oz.Ft
<b>LR TORQUE</b>	<u>25.6</u> Oz.Ft	<b>LR AMPS</b>	<u>38</u>
<b>WINDING</b>	SE48(4-6)17-1	<b>Date</b>	4/27/2018