

PRODUCT INFORMATION PACKET



Model No: 102184.00
Catalog No: 102184.00
0.25 HP Special Voltage Motor, 3 phase, 1500 RPM, 220/380/440 V, 56C Frame, TEFC
50 Hz Motors



Regal and Leeson are trademarks of Regal Beloit Corporation or one of its affiliated companies.
©2020 Regal Beloit Corporation, All Rights Reserved. MC017097E





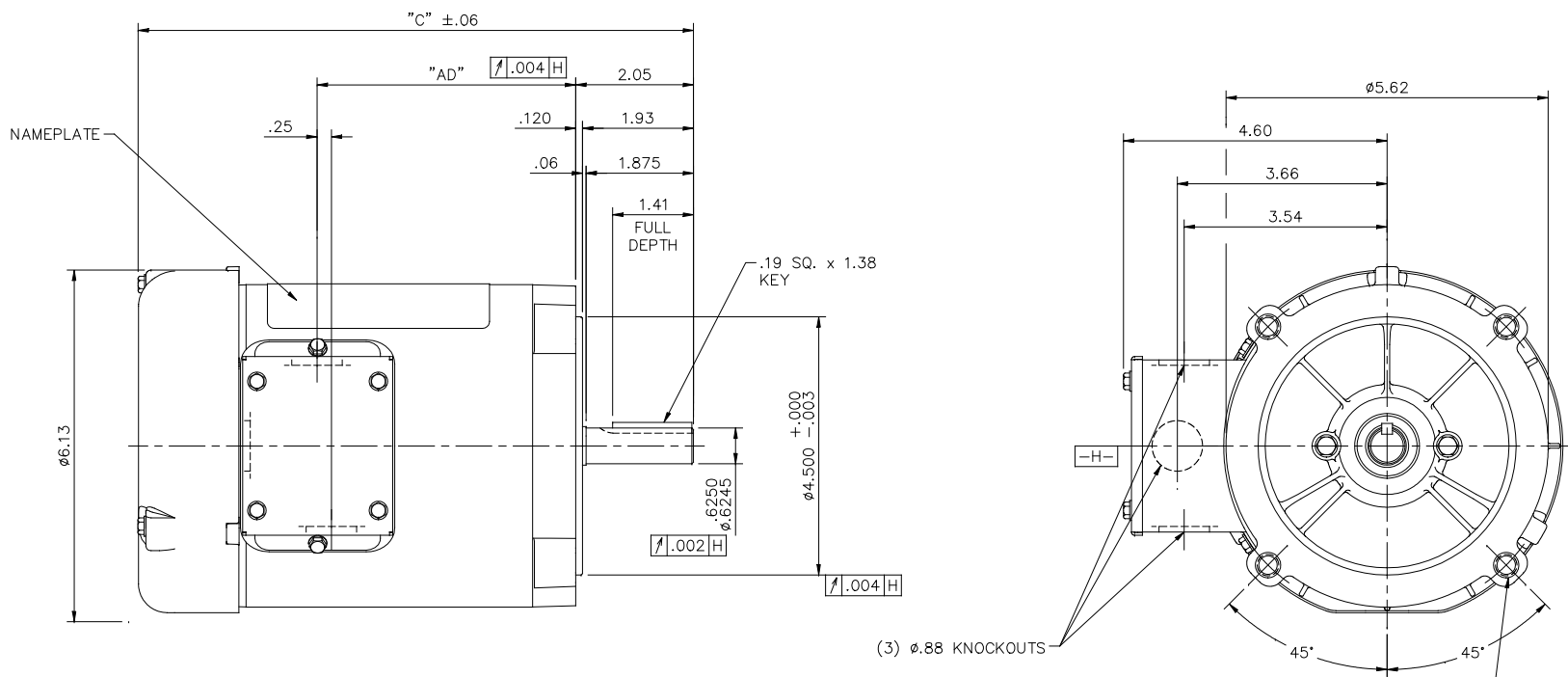
Nameplate Specifications

Output HP	0.25 Hp	Output KW	0.19 kW
Frequency	50 Hz	Voltage	220/380/440 V
Current	1.7/1.0/0.85 A	Speed	1425 rpm
Service Factor	1.15	Phase	3
Efficiency	56 %	Power Factor	50
Duty	Continuous	Insulation Class	B
Design Code	B	KVA Code	L
Frame	S56C	Enclosure	Totally Enclosed Fan Cooled
Thermal Protection	No	Ambient Temperature	40 °C
Drive End Bearing Size	6203	Opp Drive End Bearing Size	6203
UL	Recognized	CSA	Y
CE	Y	IP Code	54

Technical Specifications

Electrical Type	Squirrel Cage Induction Run	Starting Method	Across The Line
Poles	4	Rotation	Reversible
Resistance Main	59.6 Ohms	Mounting	Round
Motor Orientation	Horizontal	Drive End Bearing	Ball
Opp Drive End Bearing	Ball	Frame Material	Rolled Steel
Shaft Type	NEMA 56	Overall Length	9.44 in
Frame Length	4.75 in	Shaft Diameter	0.625 in
Shaft Extension	1.88 in	Assembly/Box Mounting	F1 ONLY
Outline Drawing	031637-475	Connection Drawing	005381.01

This is an uncontrolled document once printed or downloaded and is subject to change without notice. Date Created:14/10/2020



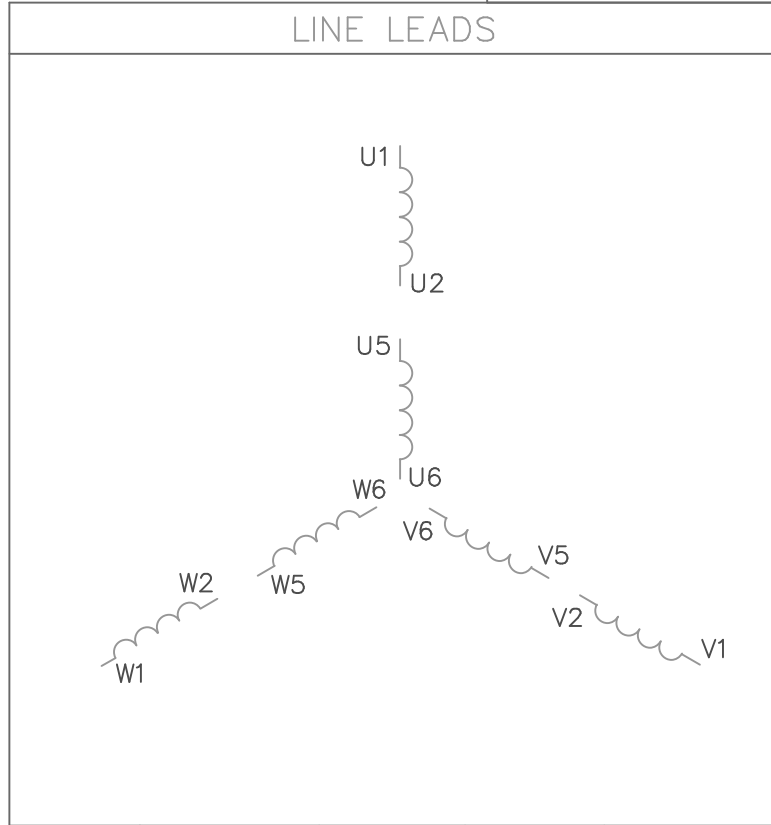
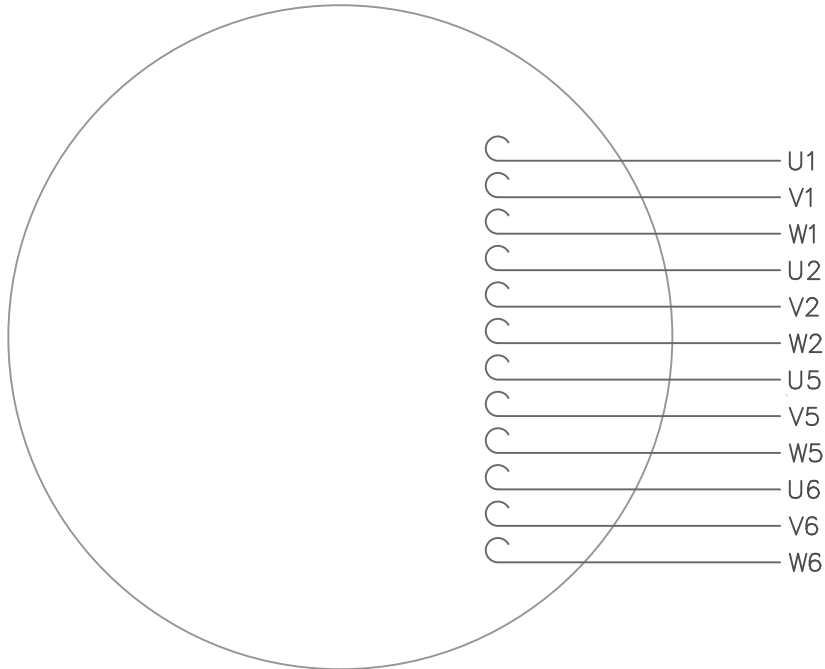
DASH NO.	"C"	"AD"
475	9.44	4.25
500	9.69	4.50
525	9.94	4.75
550	10.19	5.00
575	10.44	5.25
600	10.69	5.50
625	10.94	5.75
650	11.19	6.00
675	11.44	6.25
700	11.69	6.50
725	11.94	6.75
750	12.19	7.00

3/8-16 UNC 2B TAP x .56 DEEP
(4) REQ'D. ON A Ø5.875 B.C.

GASKETS THROUGHOUT

		TOLERANCES UNLESS SPECIFIED		REGAL™ Regal Beloit America, Inc.	DRAWN PG 7/12/01		
		DEC.	INCHES		CHK		
		.X	±.1		APPD PG 7/12/01		
03	UPDATED SHAFT KEYWAY VIEW	UD	11/27/18	.XX	±.03	TITLE	
02	ADDED DASH NO. 475 TO TABLE (102184.00)	PG	9/19/02	.XXX	±.005	OUTLINE - S56C FRAME "C" FACE MOUNT - TEFC	
01	REVISED CALLOUT FOR GD&T	KMM	6/6/02	PG	.XXXX	±.0005	MAT'L.
	NO. REVISION		BY & DATE	CHK	ANG	±1/2"	FINISH
THIS DRAWING IN DESIGN AND DETAIL IS OUR PROPERTY AND MUST NOT BE USED EXCEPT IN CONNECTION WITH OUR WORK ALL RIGHTS OF DESIGN AND INVENTION ARE RESERVED THIS IS AN ELECTRONICALLY GENERATED DOCUMENT - DO NOT SCALE THIS PRINT				RFP			CAD FILE
				DIST			031637
							SIZE
							B
							DRAWING NO.
							031637
							REV.
							02

VIEW FROM OUTSIDE OF MOTOR AT SWITCH END.



VOLTAGE	L1	L2	L3	JOIN
(2Δ) LOW	U1,W2 U5,W6	V1,U2 V5,U6	W1,V2 W5,V6	-----
(2Y) MEDIUM	U1,U5	V1,V5	W1,W5	(U2,V2,W2) (U6,V6,W6)
(1Δ) HIGH	U1,W6	V1,U6	W1,V6	(U2,U5) (V2,V5) (W2,W5)

				TOLERANCES UNLESS OTHERWISE SPECIFIED	
				DECIMALS	
				.00	± .01
				.000	± .005
1	REDRAWN TO CURRENT STANDARDS	DBT	05/30/97	.0000	± .0005
NO.	REVISION	BY	DATE	FRACTIONS	± 1/64
				ANGLES	± 1/2°
				INCH/MM	

LEESON ELECTRIC CORPORATION

DRAWN	GWS 2/23/96	TITLE	EXT. WIRING DIAGRAM	
CH'K'D.		TYPE "T" W/O PROTECTOR		
APPR.		MAT'L.	DECAL - 080590	
SCALE	1=1	FINISH	STOCK	SIZE
REF.	005352 PG 3			A
FMF				DRAWING NO.
				005381-01

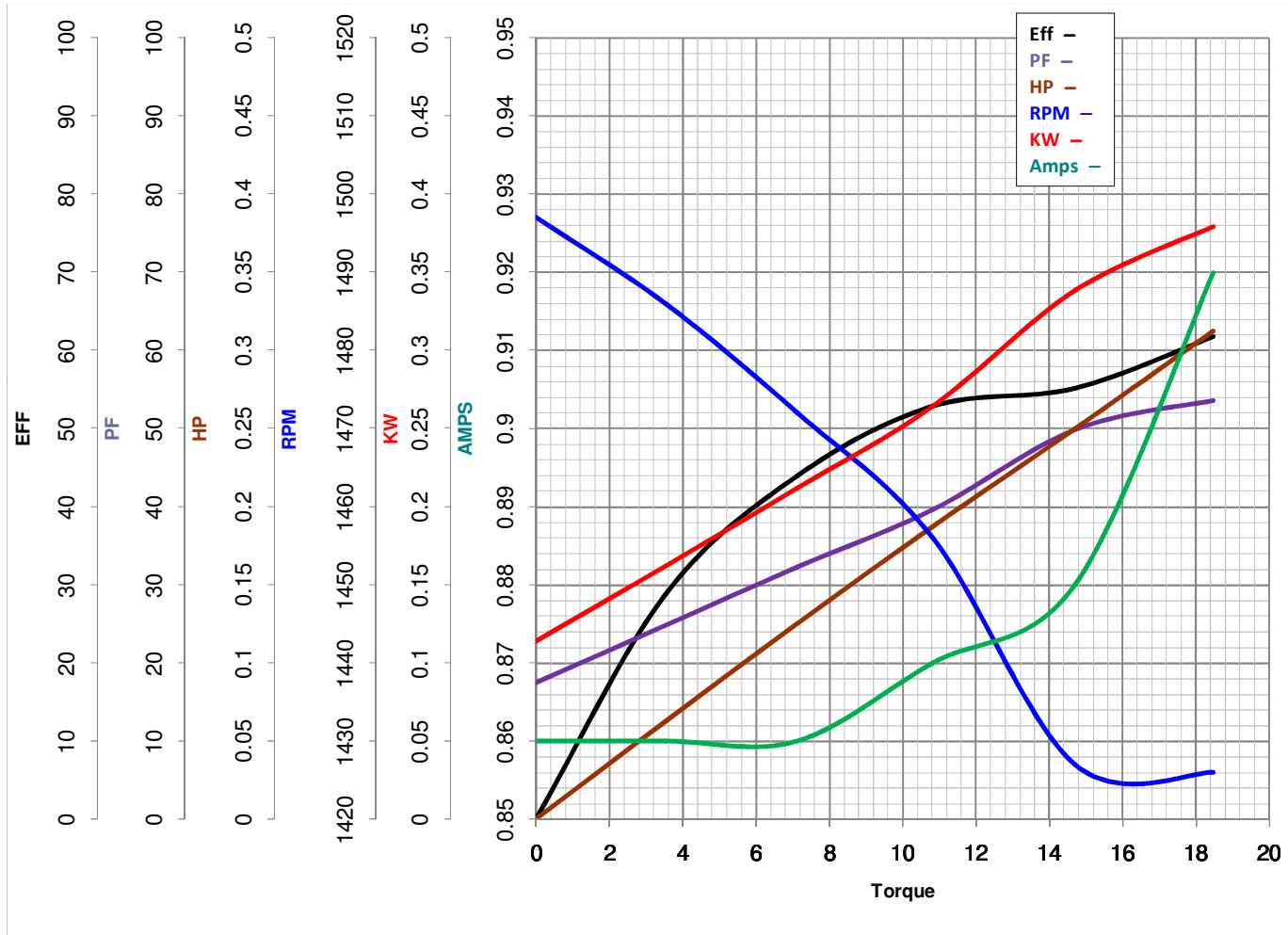


LEESON ELECTRIC CORPORATION
 TYPICAL PERFORMANCE CURVE for AC MOTOR

Model No 102184.00

Catalog No 102184.00

Curve at 440 Volts HP 0.25 PHASE 3
50 HZ
0.25 HP VOLTS 220/380/440
 HZ 50 RPM 1425



Torque in Oz.Ft

FL TORQUE 14.71 Oz.Ft
 BD TORQUE 74.9 Oz.Ft
 LR TORQUE 63 Oz.Ft

FL AMPS 1.7/1.85
 PU TORQUE 61.5 Oz.Ft
 LR AMPS 3.6

WINDING TE48464-4

Date 6/5/2018