

PRODUCT INFORMATION PACKET



Model No: 102693.00

Catalog No: 102693.00

0.50 HP Special Voltage Motor, 3 phase, 1500 RPM, 220/380/440 V, 56 Frame, TEFC
50 Hz Motors



Regal and Leeson are trademarks of Regal Beloit Corporation or one of its affiliated companies.

©2020 Regal Beloit Corporation, All Rights Reserved. MC017097E

REGAL



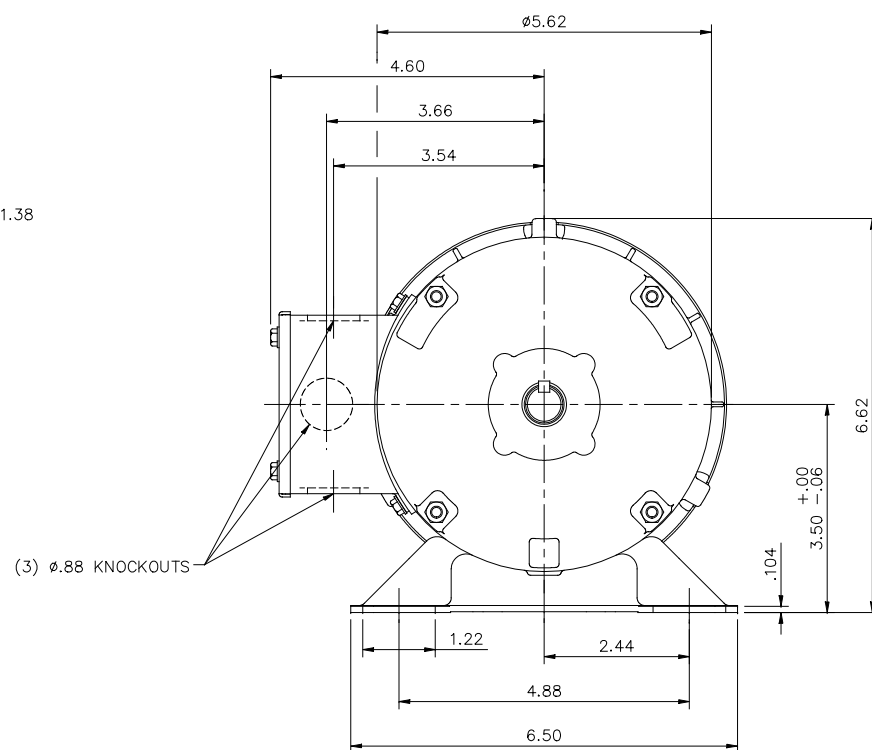
Nameplate Specifications

Output HP	0.50 Hp	Output KW	0.37 kW
Frequency	50 Hz	Voltage	220/380/440 V
Current	2.4/1.4/1.2 A	Speed	1425 rpm
Service Factor	1.15	Phase	3
Efficiency	72 %	Power Factor	60
Duty	Continuous	Insulation Class	B
Design Code	B	KVA Code	L
Frame	S56	Enclosure	Totally Enclosed Fan Cooled
Thermal Protection	No	Ambient Temperature	40 °C
Drive End Bearing Size	6203	Opp Drive End Bearing Size	6203
UL	Recognized	CSA	Y
CE	Y	IP Code	54

Technical Specifications

Electrical Type	Squirrel Cage Induction Run	Starting Method	Across The Line
Poles	4	Rotation	Reversible
Resistance Main	0 Ohms	Mounting	Rigid base
Motor Orientation	Horizontal	Drive End Bearing	Ball
Opp Drive End Bearing	Ball	Frame Material	Rolled Steel
Shaft Type	NEMA 56	Overall Length	10.19 in
Frame Length	5.50 in	Shaft Diameter	0.625 in
Shaft Extension	1.88 in	Assembly/Box Mounting	F1 ONLY
Connection Drawing	005381.01	Outline Drawing	031632-550

This is an uncontrolled document once printed or downloaded and is subject to change without notice. Date Created:14/10/2020

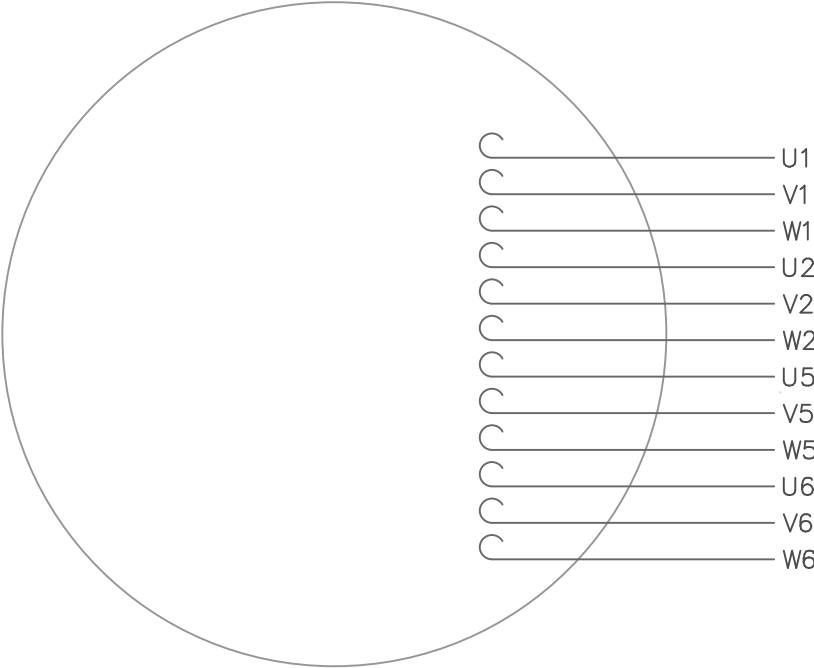


DASH NO.	"C"	"AD"
500	9.69	1.94
525	9.94	2.19
550	10.19	2.44
575	10.44	2.69
600	10.69	2.94
625	10.94	3.19
650	11.19	3.44
675	11.44	3.69

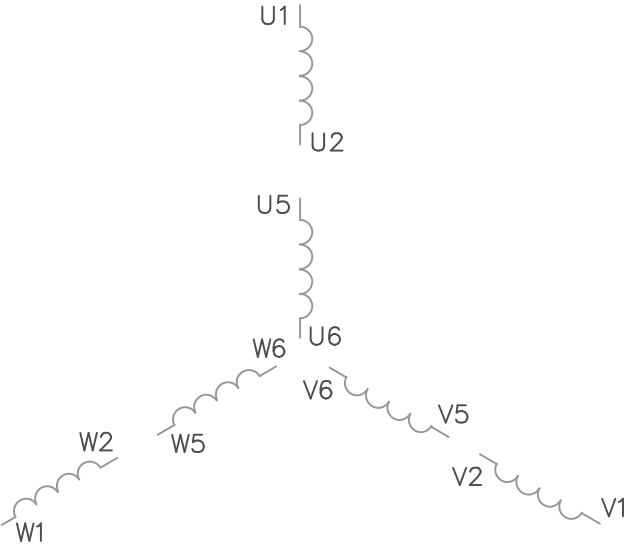
GASKETS THROUGHOUT

				TOLERANCES UNLESS OTHERWISE SPECIFIED			LEESON ELECTRIC CORPORATION			
				DEC.	INCHES	METRIC				
				.X	±.1	±2.5	DRAWN PG 5/30/01	TITLE OUTLINE – S56 FRAME RIGID MOUNT – TEFC		
				.XX	±.03	±.76	APPR.			
A	ADDED NAMEPLATE ORIENTATION	DS 04/05/18	PVR	.XXX	±.005	±.127	R.F.P.	MAT'L 3 PHASE		
NO.	REVISION	BY & DATE	CHK'D	.XXXX	±.0005	±.0127	SCALE 1=2			
THIS DRAWING IN DESIGN AND DETAIL IS OUR PROPERTY AND MUST NOT BE USED EXCEPT IN CONNECTION WITH OUR WORK ALL RIGHTS OF DESIGN AND INVENTION ARE RESERVED THIS IS AN ELECTRONICALLY GENERATED DOCUMENT – DO NOT SCALE THIS PRINT							FRACTIONS ±1/64 ANGLES ±1/2"	REF. 030391 RFM 101078	FINISH	REV. A DRAWING NO. 031632

VIEW FROM OUTSIDE OF MOTOR AT SWITCH END.



LINE LEADS



VOLTAGE	L1	L2	L3	JOIN
(2Δ) LOW	U1,W2 U5,W6	V1,U2 V5,U6	W1,V2 W5,V6	----
(2Y) MEDIUM	U1,U5	V1,V5	W1,W5	(U2,V2,W2) (U6,V6,W6)
(1Δ) HIGH	U1,W6	V1,U6	W1,V6	(U2,U5) (V2,V5) (W2,W5)

				TOLERANCES UNLESS OTHERWISE SPECIFIED		LEESON ELECTRIC CORPORATION				
				DECIMALS						
				.00	± .01	DRAWN GWS 2/23/96	EXT.WIRING DIAGRAM TYPE "T" W/O PROTECTOR			
				.000	± .005	CH'K'D.				
1	REDRAWN TO CURRENT STANDARDS	DBT	05/30/97	.0000	± .0005	APPR.	MAT'L. DECAL — 080590			
NO.	REVISION	BY	DATE	FRACTIONS	± 1/64	SCALE 1=1				
THIS DRAWING IN DESIGN AND DETAIL IS OUR PROPERTY AND MUST NOT BE USED EXCEPT IN CONNECTION WITH OUR WORK ALL RIGHTS OF DESIGN AND INVENTION ARE RESERVED				ANGLES	± 1/2°	REF. 005352 PG 3	FINISH		SIZE A	DRAWING NO. 005381—01
				INCH/MM		FMF	STOCK			



CERTIFICATION DATA SHEET

1051 CHEYENNE AVE.
GRAFTON, WI 53024
PH. 262-377-8810

CONN. DIAGRAM: 005381.01

CATALOG #: 102693.00

OUTLINE: 031632-550

MOUNTING: F1 ONLY

WINDING #: TE48466 FR 4 A

TYPICAL MOTOR PERFORMANCE DATA

HP	KW	SYNC. RPM	F.L. RPM	FRAME	ENCLOSURE	KVA CODE	DESIGN
1/2	0.37	1500	1425	S56	TEFC	L	B

PH	Hz	VOLTS	AMPS	START TYPE	DUTY	INSL	S.F.	AMB°C
3	50	220/380/440	2.4/1.4/1.2	ACROSS THE LINE	CONTINUOUS	B3	1.15	40

FULL LOAD EFF:	72	3/4 LOAD EFF:	72	1/2 LOAD EFF:	65.8	GTD. EFF	ELEC. TYPE
FULL LOAD PF:	60	3/4 LOAD PF:	53	1/2 LOAD PF:	41	0	SQ CAGE IND RUN

F.L. TORQUE	LOCKED ROTOR AMPS	L.R. TORQUE	B.D. TORQUE	F.L. RISE°C
29.5 OZ-FT	11.6 / 6.7 / 5.8	1170	128.5 OZ-FT 4007 %	75.4

SOUND PRESSURE @ 3 FT.	SOUND POWER	ROTOR WK^2	MAX. WK^2	SAFE STALL TIME	STARTS / HOUR	APPROX. MOTOR WGT
- dBA	- dBA	0.042 LB-FT^2	- LB-FT^2	10 SEC.	-	0 LBS.

*** SUPPLEMENTAL INFORMATION ***

DE BRACKET TYPE	ODE BRACKET TYPE	MOUNT TYPE	ORIENTATION	SEVERE DUTY	HAZARDOUS LOCATION	DRIP COVER	SCREENS	PAINT
STANDARD	STANDARD	RIGID	HORIZONTAL	FALSE	NONE	FALSE	NONE	BLUE - LEESON (ENAMEL)

BEARINGS		GREASE	SHAFT TYPE	SPECIAL DE	SPECIAL ODE	SHAFT MATERIAL	FRAME MATERIAL
DE	ODE						
BALL	BALL	MULTEMP SRL	T	NONE	NONE	1144 STRESSPROOF (C-223)	ROLLED STEEL
6203	6203						

THERMO-PROTECTORS				THERMISTORS	CONTROL	SPACE HEATERS
THERMOSTATS		PROTECTORS	WDG RTDs	BRG RTDs		
NONE		NOT	NONE	NONE	FALSE	NONE VOLTS

*

INVERTER TORQUE:	NONE
INV. HP SPEED RANGE:	NONE

ENCODER:	NONE
NONE	NONE
NONE	PPR

BRAKE:	NONE	NONE
NONE	P/N	NONE
NONE	NONE	
FT-LB	V	NONE HZ

S



LEESON ELECTRIC CORPORATION

TYPICAL PERFORMANCE CURVE for AC MOTOR

Model No 102693.00Catalog No 102693.00

Curve at

460

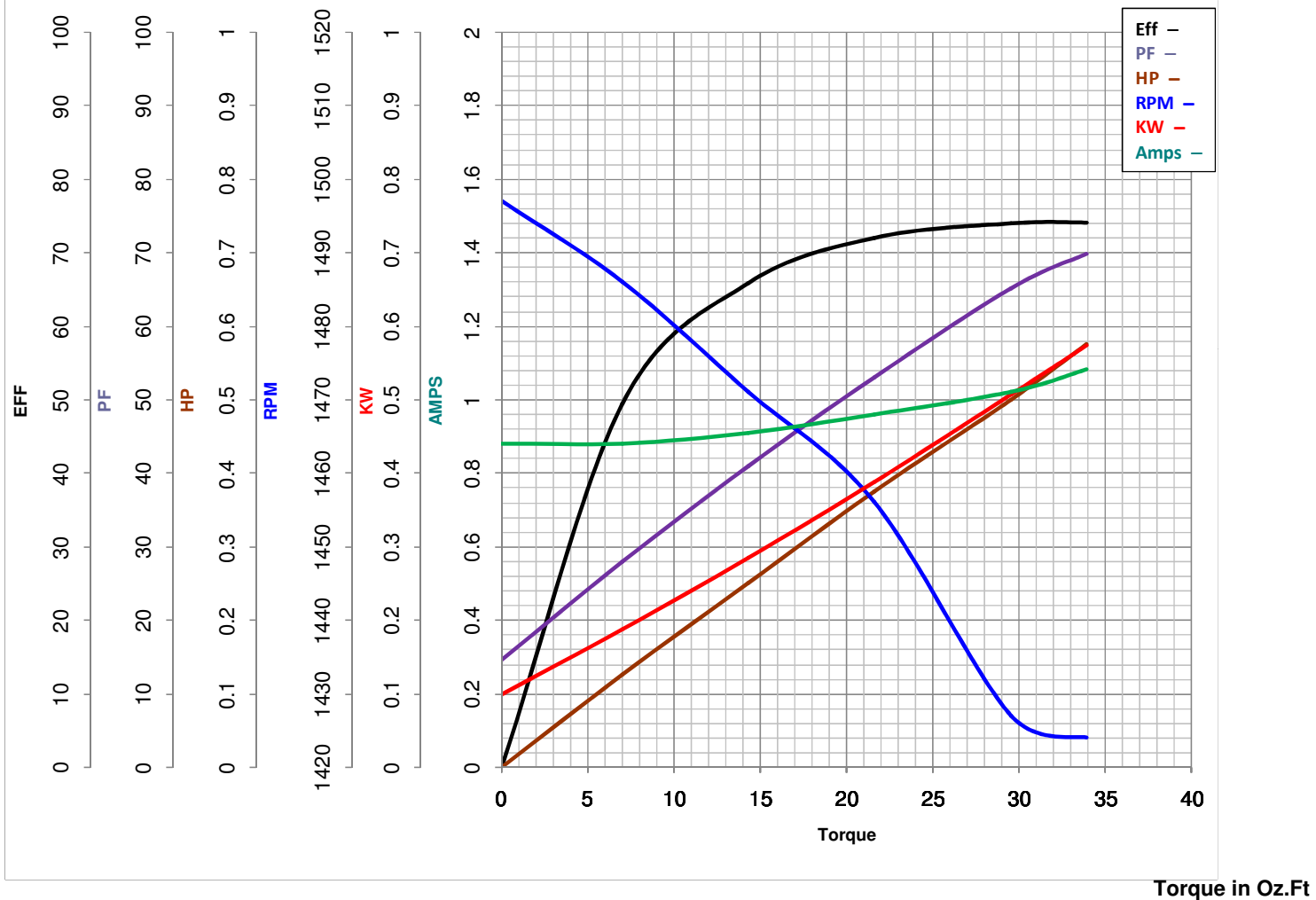
Volts

50

HZ

0.5

HP

HP 0.50PHASE 3VOLTS 220/380/440HZ 50RPM 1425FL TORQUE 29.5 Oz.FtBD TORQUE 128.5 Oz.FtLR TORQUE 1170 Oz.Ft

WINDING TE48466-4

FL AMPS 2.4/1.4/1.2PU TORQUE 116.5 Oz.FtLR AMPS 5.8

Date 5/23/2018