

PRODUCT INFORMATION PACKET



Model No: 103393.00
Catalog No: 103393.00
0.33 HP Washdown Motor, 3 phase, 1800 RPM, 208-230/460 V, 48C Frame, TENV
3 Phase Motors



Regal and Leeson are trademarks of Regal Beloit Corporation or one of its affiliated companies.
©2020 Regal Beloit Corporation, All Rights Reserved. MC017097E





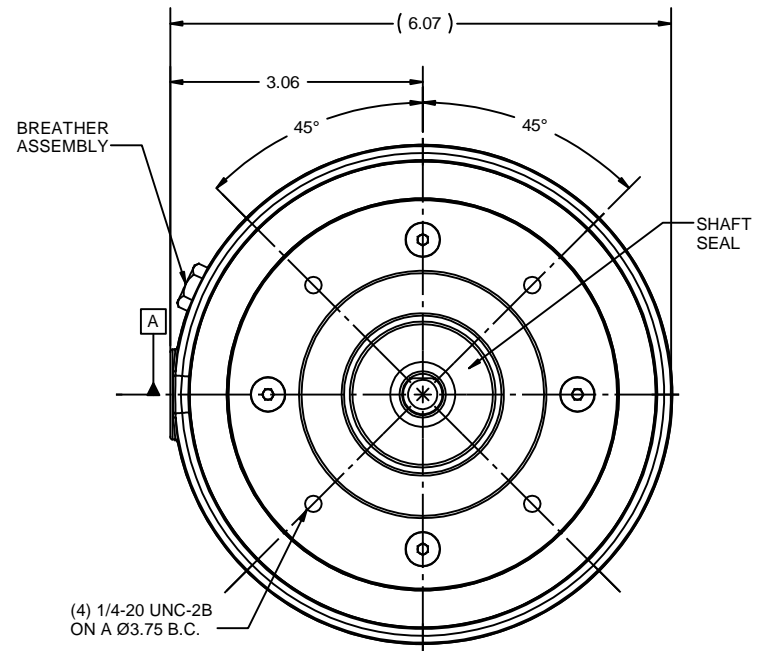
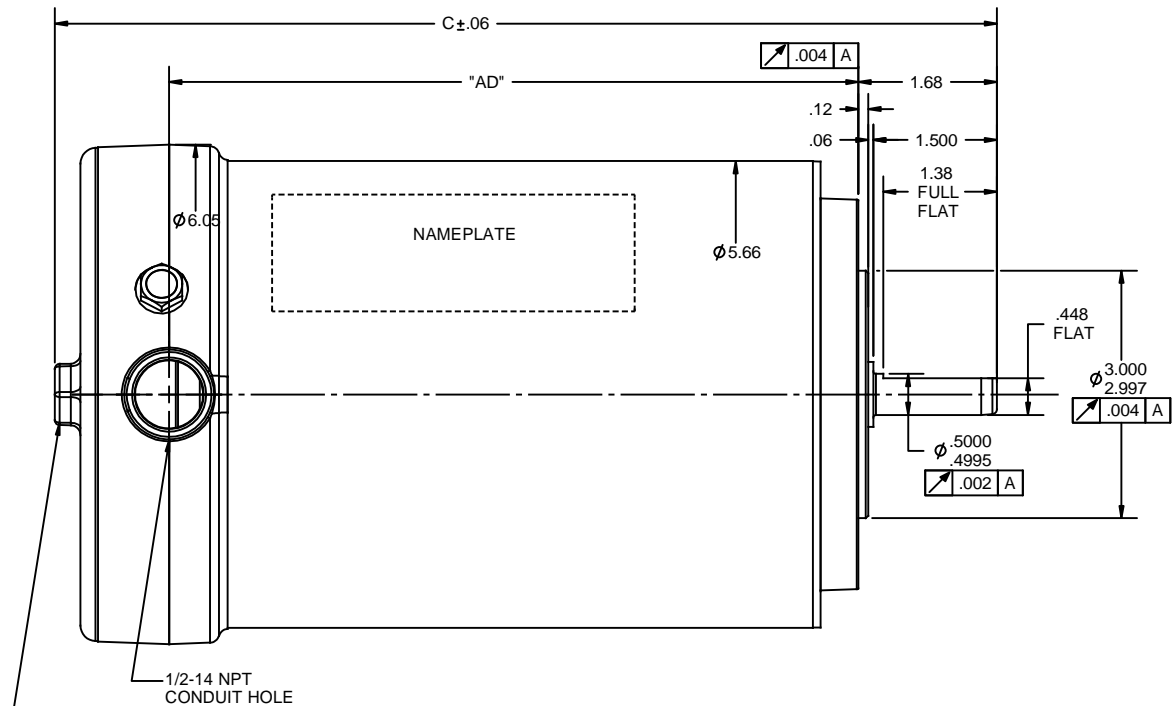
Nameplate Specifications

Output HP	0.33 Hp	Output KW	0.25 kW
Frequency	60 Hz	Voltage	208-230/460 V
Current	1.3-1.3/0.65 A	Speed	1725 rpm
Service Factor	1.15	Phase	3
Efficiency	70.5 %	Power Factor	68
Duty	Continuous	Insulation Class	F
Design Code	B	KVA Code	K
Frame	48C	Enclosure	Totally Enclosed Non Ventilated
Thermal Protection	No	Ambient Temperature	40 °C
Drive End Bearing Size	6204	Opp Drive End Bearing Size	6204
UL	Recognized	CSA	Y
CE	Y	IP Code	56

Technical Specifications

Electrical Type	Squirrel Cage Induction Run	Starting Method	Across The Line
Poles	4	Rotation	Reversible
Resistance Main	11 Ohms	Mounting	Round
Motor Orientation	Horizontal	Drive End Bearing	Ball
Opp Drive End Bearing	Ball	Frame Material	Stainless Steel
Shaft Type	NEMA 48	Overall Length	9.83 in
Frame Length	5.50 in	Shaft Diameter	0.500 in
Shaft Extension	1.5 in	Assembly/Box Mounting	F1 ONLY
Outline Drawing	031981-550	Connection Drawing	005010-01

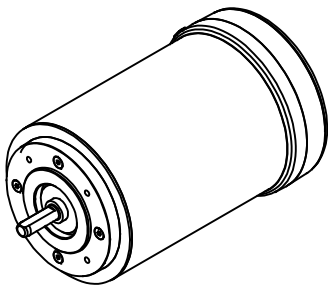
This is an uncontrolled document once printed or downloaded and is subject to change without notice. Date Created:14/10/2020



3/4" HEX DRIVER FOR COVER REMOVAL

1/2-14 NPT CONDUIT HOLE

DASH NO.	"C"	"AD"
525	9.58	6.51
550	9.83	6.76
575	10.08	7.01
600	10.33	7.26
625	10.58	7.51
650	10.83	7.76
675	11.08	8.01
700	11.33	8.26
725	11.58	8.51
750	11.83	8.76



REVISION		BY & DATE	CHK	ANG	±1/2°	FINISH	SIZE	DRAWING NO	REV
05	REVERSED "C" AND "AD" COLUMNS IN TABLE	PG 9/22/2010	DEC				B	031981	05
04	ADDED TABLE WAS MISSING FROM DWG ISAAC 10-3726	SAD 8/24/2010	GWS	x	±.1				
03	ADDED BREATHER ASSEMBLY	VV 3/13/2010	.xx		±.03	TITLE			
02	ADDED ITEM 725 AND 750	VV 3/2/2010	.xxx		±.005	ROUND - C-FACE			
01	OVERALL LENGTH WAS LETTER "B"	VV 2/18/2010	JJK	.xxx	±.0005	MATL			



**ELECTRIC MOTORS
GEARMOTORS
AND DRIVES**

DRAWN VV 12/25/09
CHK JJK 12/25/09
APPR

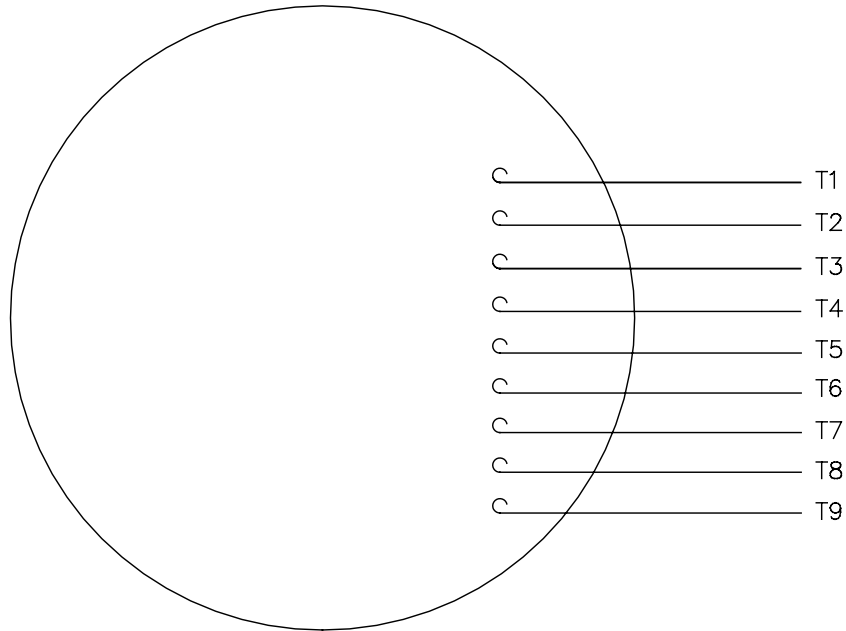
SCALE 1:4
REF 031730
FMF 103418.00

THIRD ANGLE PROJECTION

NETWORK FILE NAME 031981

005010-01

VIEW FROM OUTSIDE OF MOTOR AT SWITCH END.



VOLTAGE	L1	L2	L3	JOIN & INSULATE
HIGH	T1	T2	T3	(T4,T7) (T5,T8) (T6,T9)
LOW	T1,T7	T2,T8	T3,T9	T4,T5,T6

				TOLERANCES UNLESS SPECIFIED		REGAL ™ Regal Beloit America, Inc.		DRAWN RDW 04/12/02		
				DEC.	INCHES			CHK		
				.X	±.1			APPD		
				.XX	±.01			SCALE 1=1		
				.XXX	±.005	TITLE		EXTERNAL WIRING DIAGRAM		
				.XXXX	±.0005	MAT'L.		DECAL - 004014		
				ANG	±1/2°	FINISH		REF FIG.2-51		
A	UPDATED TO REGAL LOGO			SAJ	06/26/15	AJY	.XXXX	±.0005	FMF	
NO.	REVISION			BY & DATE	CHK	ANG	±1/2°	FINISH	PREV	
THIS DRAWING IN DESIGN AND DETAIL IS OUR PROPERTY AND MUST NOT BE USED EXCEPT IN CONNECTION WITH OUR WORK ALL RIGHTS OF DESIGN AND INVENTION ARE RESERVED THIS IS AN ELECTRONICALLY GENERATED DOCUMENT - DO NOT SCALE THIS PRINT				RFP	04/12/02	CAD FILE	00501001	SIZE	DRAWING NO.	REV.
				DIST	BRF-NLV			A	005010-01	A



CERTIFICATION DATA SHEET

1051 CHEYENNE AVE.
 GRAFTON, WI 53024
 PH. 262-377-8810

CONN. DIAGRAM: 005010-01

CATALOG #: 103393.00

OUTLINE: 031981-550

MOUNTING: F1 ONLY

WINDING #: T5548 3 C

TYPICAL MOTOR PERFORMANCE DATA

HP	KW	SYNC. RPM	F.L. RPM	FRAME	ENCLOSURE	KVA CODE	DESIGN
1/3&1/3	0.25&0.25	1800	1725&1425	48C	TENV	K	B

PH	Hz	VOLTS	AMPS	START TYPE	DUTY	INSL	S.F.	AMB°C
3	60/50	208-230/460&1190/380	1.3-1.3/65&1.4/7	ACROSS THE LINE	CONTINUOUS	F4	1.15/1.15	40

FULL LOAD EFF: 70.5		3/4 LOAD EFF: 71.7		1/2 LOAD EFF: 65.9		GTD. EFF		ELEC. TYPE	
FULL LOAD PF: 68		3/4 LOAD PF: 59		1/2 LOAD PF: 46.6		0		SQ CAGE IND RUN	

F.L. TORQUE	LOCKED ROTOR AMPS	L.R. TORQUE	B.D. TORQUE	F.L. RISE°C
16 OZ-FT	8.8 / 4.4	69.6 OZ-FT	79.6 OZ-FT	498 %

SOUND PRESSURE @ 3 FT.	SOUND POWER	ROTOR WK^2	MAX. WK^2	SAFE STALL TIME	STARTS / HOUR	APPROX. MOTOR WGT
0 DBA	10 DBA	0.047 LB-FT^2	0 LB-FT^2	0 SEC.	0	- LBS.

*** SUPPLEMENTAL INFORMATION ***

DE BRACKET TYPE	ODE BRACKET TYPE	MOUNT TYPE	ORIENTATION	SEVERE DUTY	HAZARDOUS LOCATION	DRIP COVER	SCREENS	PAINT
C-FACE	STANDARD	ROUND	HORIZONTAL	FALSE	NONE	FALSE	NONE	NO PAINT

BEARINGS		GREASE	SHAFT TYPE	SPECIAL DE	SPECIAL ODE	SHAFT MATERIAL	FRAME MATERIAL
DE ODE	BALL BALL	POLYREX EM	T	NONE	NONE	303 STAINLESS (C-501)	STAINLESS STEEL

THERMO-PROTECTORS				THERMISTORS		CONTROL		SPACE HEATERS	
THERMOSTATS	PROTECTORS	WDG RTDS	BRG RTDS	NONE		FALSE		NONE	
NONE	NOT	NONE	NONE						

*

INVERTER TORQUE: NONE
 INV. HP SPEED RANGE: NONE

ENCODER:		BRAKE:	
NONE	NONE	NONE	NONE
NONE	NONE	P/N NONE	NONE
NONE	NONE	NONE	NONE
NONE	PPR		

N
 O
 T
 E
 S

FT-LB	V	NONE	Hz
-------	---	------	----



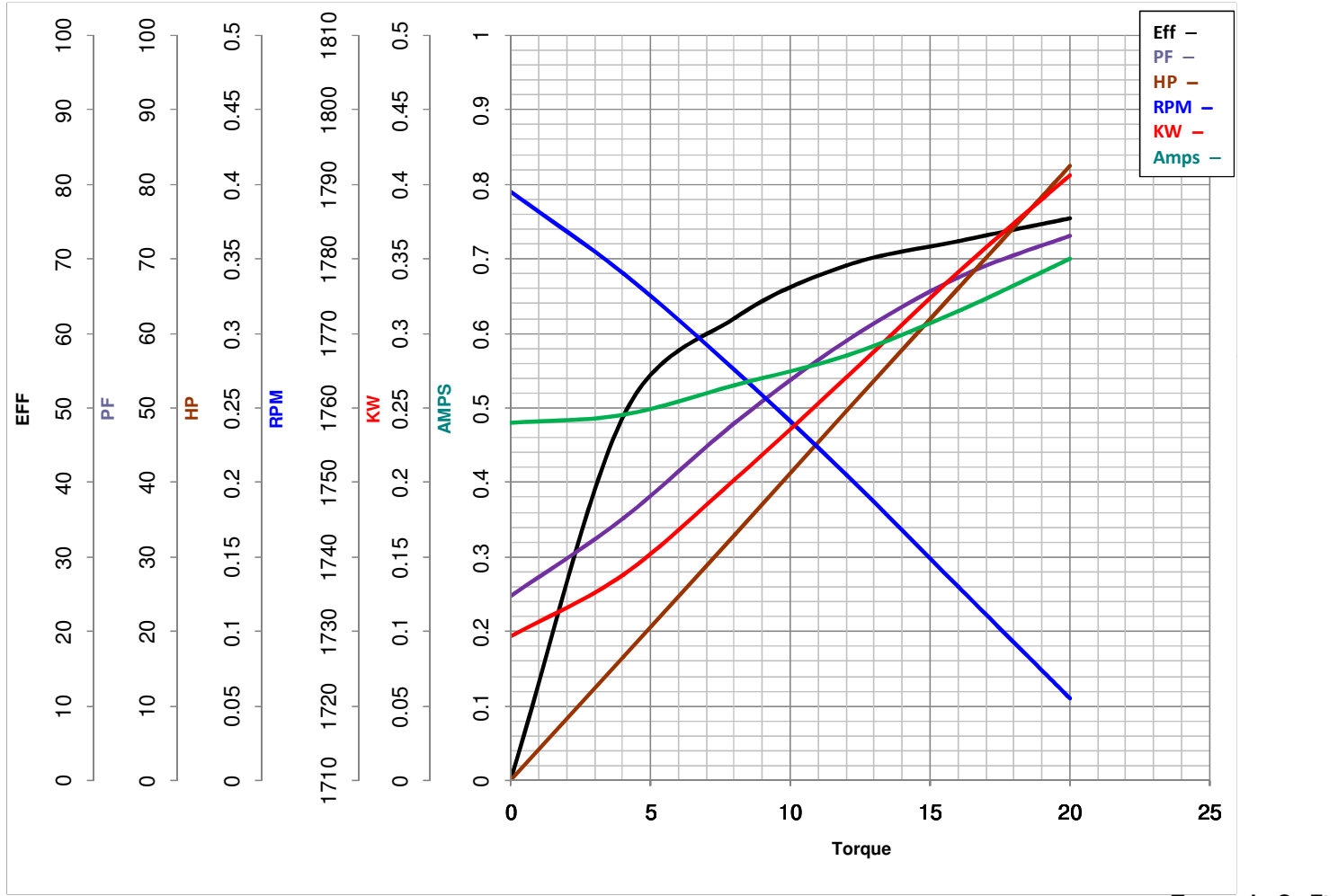
LEESON ELECTRIC CORPORATION
 TYPICAL PERFORMANCE CURVE for AC MOTOR

Model No 103393.00

Catalog No 103393.00

Curve at 460 Volts HP 0.33&0.33 PHASE 3
60 HZ
0.33 HP VOLTS 208-230/460&190/380

HZ 60&50 RPM 1725&1425



FL TORQUE	<u>16</u>	Oz.Ft	FL AMPS	<u>1.3-1.3/.65</u>
BD TORQUE	<u>79.6</u>	Oz.Ft	PU TORQUE	<u>68.7</u> Oz.Ft
LR TORQUE	<u>69.6</u>	Oz.Ft	LR AMPS	<u>4.4</u>
WINDING	T5548-3		Date	5/22/2018