

PRODUCT INFORMATION PACKET



Model No: 103716.00

Catalog No: 103716.00

0.33 HP Pedestal Fan HVAC/R Motor, 1 phase, 1800 RPM, 115/230 V, 48Y Frame, TENV
HVAC/R Pedestal Fan Motors



Regal and Leeson are trademarks of Regal Beloit Corporation or one of its affiliated companies.
©2020 Regal Beloit Corporation, All Rights Reserved. MC017097E

The Regal logo is located in the bottom right corner. It features the word "REGAL" in a bold, white, sans-serif font, set against a dark grey, trapezoidal background. The background of the entire page on the right side is a blue gradient with a halftone dot pattern.



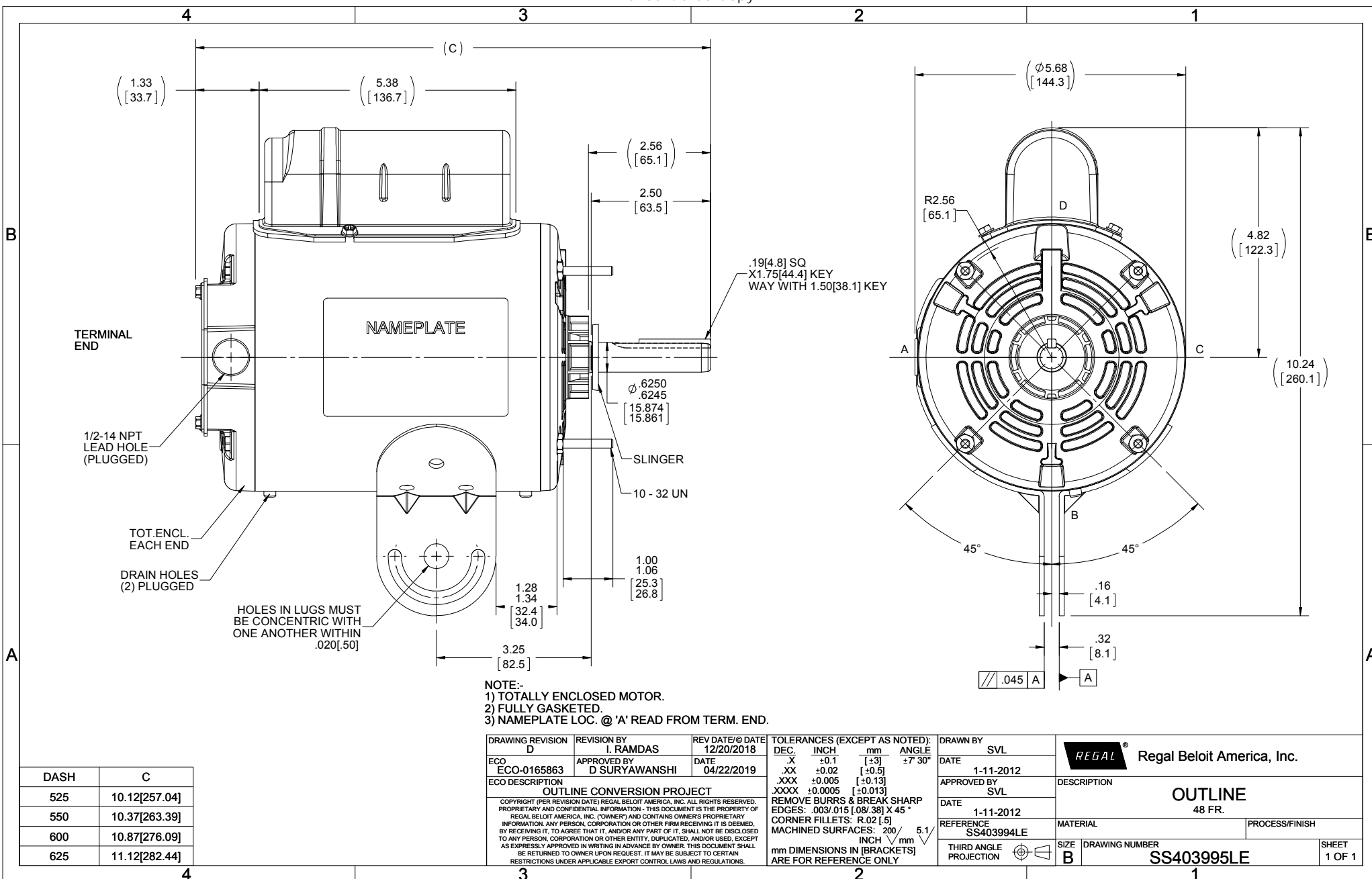
Nameplate Specifications

Output HP	0.33 Hp	Output KW	0.25 kW
Frequency	60 Hz	Voltage	115/230 V
Current	3.5/1.8 A	Speed	1625 rpm
Service Factor	1	Phase	1
Efficiency	66 %	Power Factor	96
Duty	Continuous	Insulation Class	B
Design Code	N	KVA Code	D
Frame	48YZ	Enclosure	Totally Enclosed Non Ventilated
Thermal Protection	Automatic Lock Rotor Only	Ambient Temperature	40 °C
Drive End Bearing Size	6203	Opp Drive End Bearing Size	6203
UL	Recognized	CSA	Y
CE	N	IP Code	43

Technical Specifications

Electrical Type	Permanent Split Capacitor	Starting Method	Across The Line
Poles	4	Rotation	Selective Counterclockwise
Resistance Main	0 Ohms	Mounting	Round - Swing Arm
Motor Orientation	Horizontal	Drive End Bearing	Ball
Opp Drive End Bearing	Ball	Frame Material	Rolled Steel
Shaft Type	Single Special Extension	Overall Length	10.81 in
Frame Length	6.00 in	Shaft Diameter	0.625 in
Shaft Extension	2.56 in	Assembly/Box Mounting	F1 ONLY
Connection Drawing	EE9057BA-LE	Outline Drawing	SS403995LE-600

This is an uncontrolled document once printed or downloaded and is subject to change without notice. Date Created:14/10/2020



NOTE:-
 1) TOTALLY ENCLOSED MOTOR.
 2) FULLY GASKETED.
 3) NAMEPLATE LOC. @ 'A' READ FROM TERM. END.

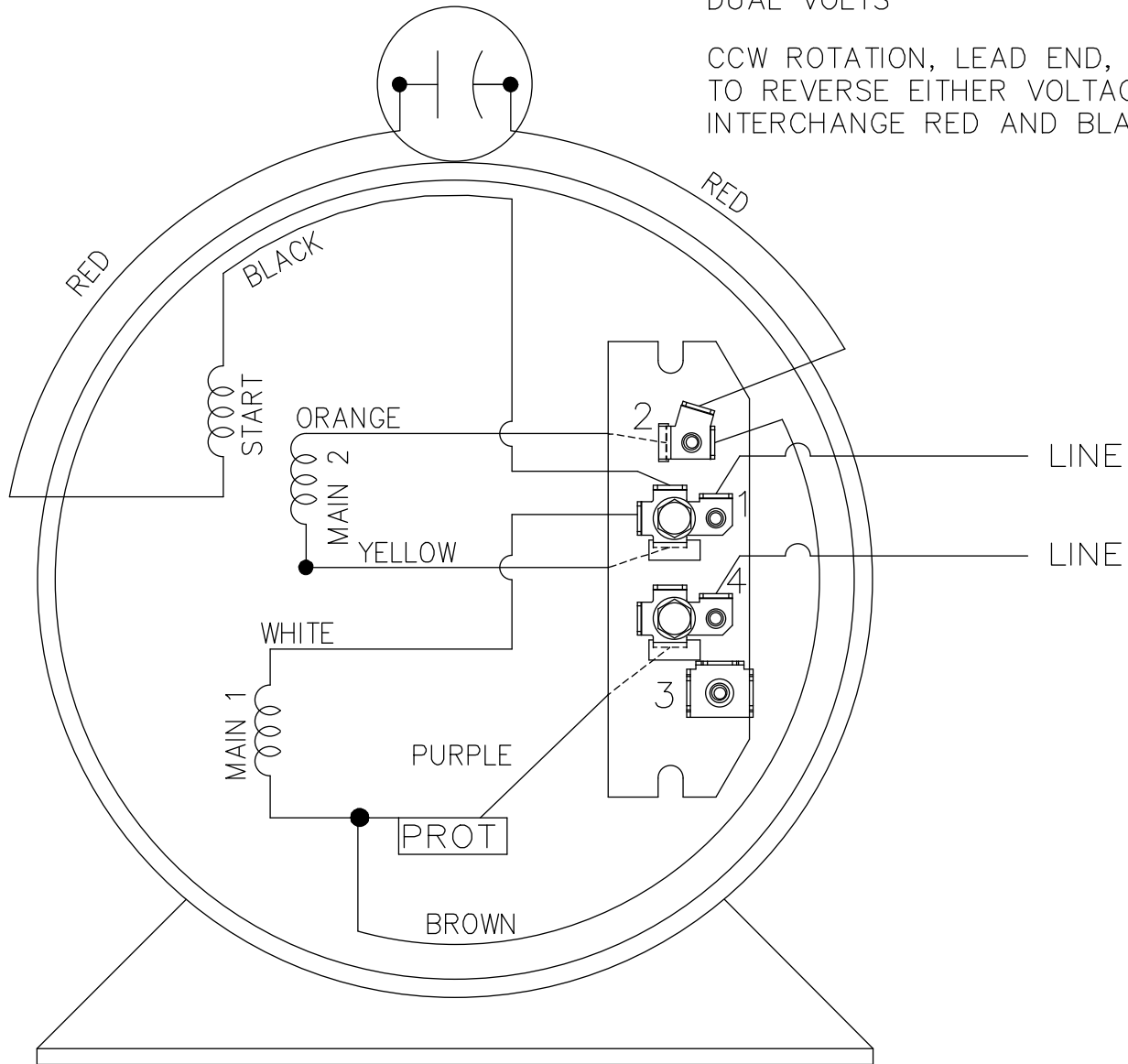
DASH	C
525	10.12[257.04]
550	10.37[263.39]
600	10.87[276.09]
625	11.12[282.44]

DRAWING REVISION	REVISION BY	REV DATE/© DATE	TOLERANCES (EXCEPT AS NOTED):
D	I. RAMDAS	12/20/2018	DEC. INCH mm ANGLE
ECO-0165863	APPROVED BY D SURYAWANSHI	DATE 04/22/2019	-X ±0.1 [±3]
ECO DESCRIPTION			.XX ±0.02 [±0.5]
OUTLINE CONVERSION PROJECT			.XXX ±0.005 [±0.13]
COPYRIGHT (PER REVISION DATE) REGAL BELOIT AMERICA, INC. ALL RIGHTS RESERVED. PROPRIETARY AND CONFIDENTIAL INFORMATION - THIS DOCUMENT IS THE PROPERTY OF REGAL BELOIT AMERICA, INC. (OWNER) AND CONTAINS OWNERS PROPRIETARY INFORMATION. ANY PERSON, CORPORATION OR OTHER FIRM RECEIVING IT IS DEEMED, BY RECEIVING IT, TO AGREE THAT IT, AND/OR ANY PART OF IT, SHALL NOT BE DISCLOSED TO ANY PERSON, CORPORATION OR OTHER ENTITY. DUPLICATED, AND/OR USED, EXCEPT AS EXPRESSLY APPROVED IN WRITING IN ADVANCE BY OWNER. THIS DOCUMENT SHALL BE RETURNED TO OWNER UPON REQUEST. IT MAY BE SUBJECT TO CERTAIN RESTRICTIONS UNDER APPLICABLE EXPORT CONTROL LAWS AND REGULATIONS.			.XXX ±0.0005 [±0.013]
			REMOVE BURRS & BREAK SHARP EDGES: .003/.015 [08/38] X 45°
			CORNER FILLETS: R.02 [5]
			MACHINED SURFACES: 200 INCH/mm 5.1
			mm DIMENSIONS IN [BRACKETS] ARE FOR REFERENCE ONLY

DRAWN BY	DATE	APPROVED BY	DATE	REFERENCE	THIRD ANGLE PROJECTION	SIZE	DRAWING NUMBER	SHEET
SVL	1-11-2012	SVL	1-11-2012	SS403994LE	⊕	B	SS403995LE	1 OF 1
REGAL [®] Regal Beloit America, Inc.		DESCRIPTION		PROCESS/FINISH				
		OUTLINE						
		48 FR.						

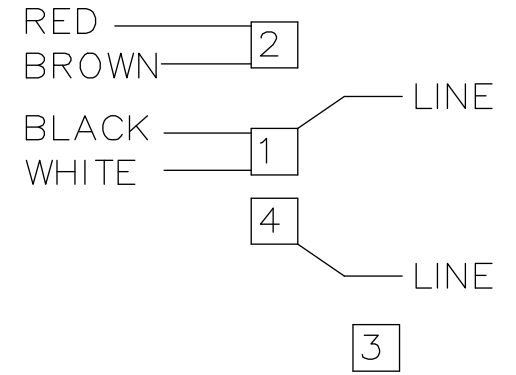
DUAL VOLTS

CCW ROTATION, LEAD END, SHOWN
TO REVERSE EITHER VOLTAGE
INTERCHANGE RED AND BLACK LEADS.

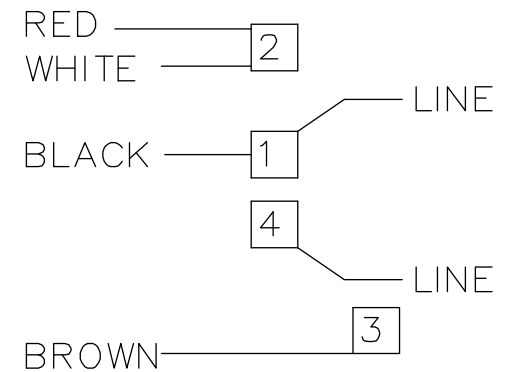



VIEW OF TERMINAL END

LOW VOLTAGE



HIGH VOLTAGE



		TOLERANCES UNLESS SPECIFIED			ELECTRIC MOTORS GEARMOTORS AND DRIVES	DRAWN	PVR 11/16/12					
		DEC.	INCHES			CHK	RD 11/16/12					
		.X	± -			APPD						
		.XX	± -			TITLE	CONNECTION DIAGRAM	SCALE	1=1			
		.XXX	± -			REF	EE9057T					
		.XXXX	± -	MAT'L.		FMF	MU110993					
NO.	REVISION	BY & DATE	CHK	ANG	± -	FINISH	PREV	PR121931				
THIS DRAWING IN DESIGN AND DETAIL IS OUR PROPERTY AND MUST NOT BE USED EXCEPT IN CONNECTION WITH OUR WORK ALL RIGHTS OF DESIGN AND INVENTION ARE RESERVED THIS IS AN ELECTRONICALLY GENERATED DOCUMENT - DO NOT SCALE THIS PRINT			RFP	CAD FILE			EE9057BA-LE	SIZE	DRAWING NO.	PAGE	OF	REV.
			DIST	WP				A	EE9057BA-LE			



1051 CHEYENNE AVE.
 GRAFTON, WI 53024
 PH. 262-377-8810

CERTIFICATION DATA SHEET

CONN. DIAGRAM: A-EE9057BA-LE

CATALOG #: 103716.00

OUTLINE: A-SS403995LE-600

MOUNTING: F1 ONLY

WINDING #: PE484304 3

TYPICAL MOTOR PERFORMANCE DATA

HP	KW	SYNC. RPM	F.L. RPM	FRAME	ENCLOSURE	KVA CODE	DESIGN
1/3	0.25	1800	1625	48Y	TENV	D	N

PH	HZ	VOLTS	AMPS	START TYPE	DUTY	INSL	S.F.	AMB°C
1	60	115/230	3.5/1.75	ACROSS THE LINE	CONTINUOUS	B3	1.0	40

FULL LOAD EFF:	66	3/4 LOAD EFF:	57	1/2 LOAD EFF:	50	GTD. EFF	62	ELEC. TYPE
FULL LOAD PF:	96	3/4 LOAD PF:	100	1/2 LOAD PF:	100			PSC 1 SPEED

F.L. TORQUE	16.8 OZ-FT	LOCKED ROTOR AMPS	11.4 / 5.7	L.R. TORQUE	11.4 OZ-FT	0 %	B.D. TORQUE	30.2 OZ-FT	F.L. RISE°C	0
-------------	------------	-------------------	------------	-------------	------------	-----	-------------	------------	-------------	---

SOUND PRESSURE @ 3 FT.	0 DBA	SOUND POWER	10 DBA	ROTOR WK^2	0 LB-FT^2	MAX. WK^2	0 LB-FT^2	SAFE STALL TIME	0 SEC.	STARTS / HOUR	0	APPROX. MOTOR WGT	62 LBS.
------------------------	-------	-------------	--------	------------	-----------	-----------	-----------	-----------------	--------	---------------	---	-------------------	---------

*** SUPPLEMENTAL INFORMATION ***

DE BRACKET TYPE	ODE BRACKET TYPE	MOUNT TYPE	ORIENTATION	SEVERE DUTY	HAZARDOUS LOCATION	DRIP COVER	SCREENS	PAINT
STANDARD	STANDARD	ROUND-SWING ARM	HORIZONTAL	FALSE	NONE	FALSE	NONE	BLUE - LEESON (ENAMEL)

BEARINGS		GREASE	SHAFT TYPE	SPECIAL DE	SPECIAL ODE	SHAFT MATERIAL	FRAME MATERIAL
DE	ODE						
BALL	BALL	MULTEMP	SGL SPL EXT	0.625 x 2.50 IN SEK	NONE	1144 STRESSPROOF (C-223)	ROLLED STEEL
6203	6203	SRL					

THERMO-PROTECTORS							
THERMOSTATS	PROTECTORS	WDG RTDS	BRG RTDS	THERMISTORS	CONTROL	SPACE HEATERS	VOLTS
NONE	AUT LCK RTR ONLY	NONE	NONE	NONE	FALSE	NONE	NONE

* INVERTER TORQUE: NONE
 INV. HP SPEED RANGE: NONE

N ENCODER: NONE
 NONE NONE
 NONE NONE PPR

O BRAKE: NONE NONE
 NONE P/N NONE
 NONE NONE
 NONE FT-LB NONE V NONE HZ

T
 E



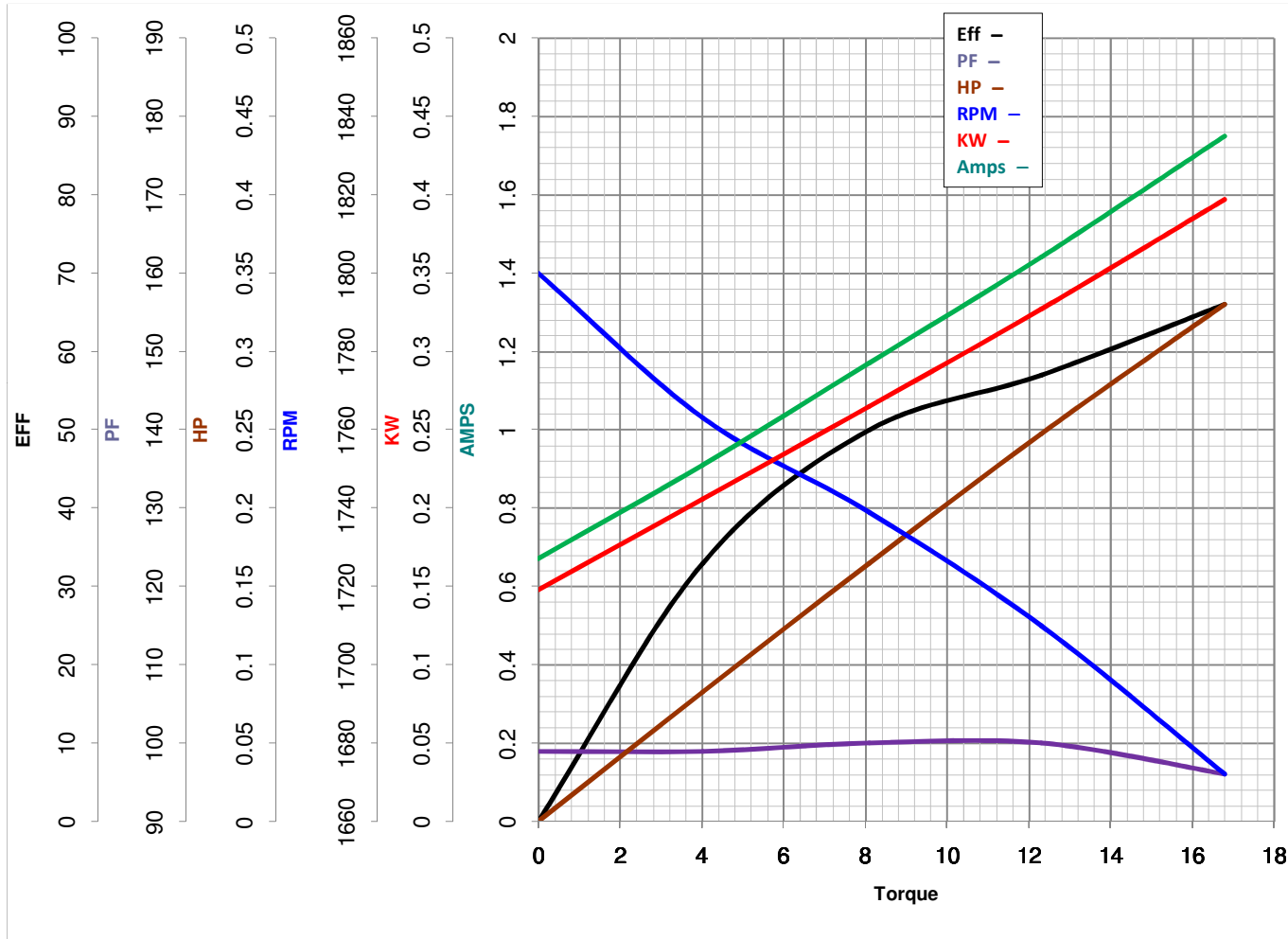
LEESON ELECTRIC CORPORATION
TYPICAL PERFORMANCE CURVE for AC MOTOR

Model No 103716.00

Curve at 230 Volts HP 0.34 PHASE 1
60 HZ
0.33 HP VOLTS 115/230

Catalog No 103716.00

HZ 60 RPM 1625



Torque in Oz.Ft

FL TORQUE 16.8 Oz.Ft
BD TORQUE 30.2 Oz.Ft
LR TORQUE 11.4 Oz.Ft

FL AMPS 3.5/1.75
PU TORQUE 9.8 Oz.Ft
LR AMPS 5.71

WINDING PE484304-3

Date 4/11/2018