

PRODUCT INFORMATION PACKET



Model No: 103723.00
Catalog No: 103723.00
0.33 HP Jet Pump Motor, 3 phase, 1800 RPM, 208-230/460 V, 56J Frame, ODP
Jet Pump Motors



Regal and Leeson are trademarks of Regal Beloit Corporation or one of its affiliated companies.
©2020 Regal Beloit Corporation, All Rights Reserved. MC017097E





Nameplate Specifications

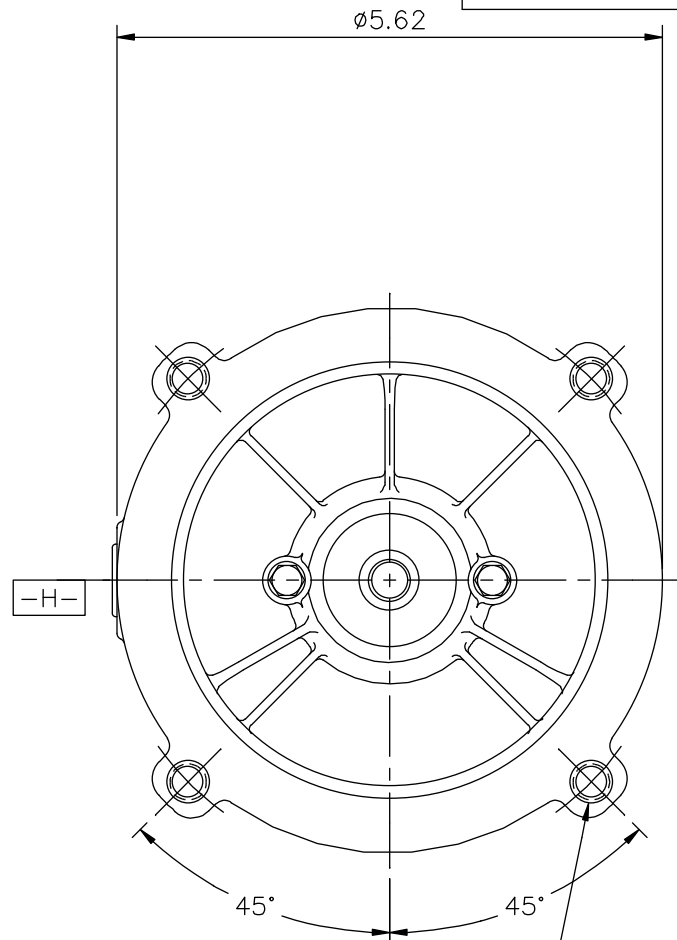
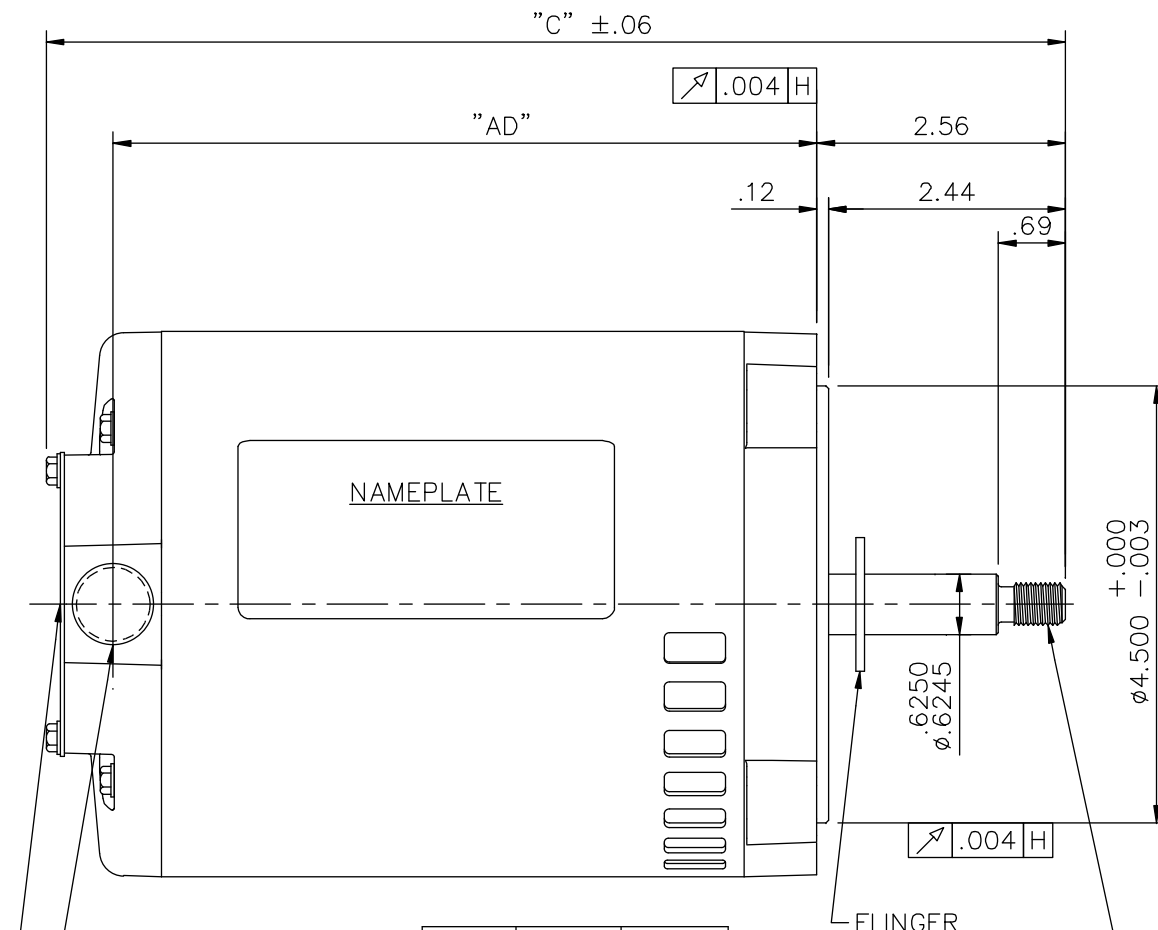
Output HP	0.33 Hp	Output KW	0.25 kW
Frequency	60 Hz	Voltage	208-230/460 V
Current	1.7-1.8/0.90 A	Speed	1725 rpm
Service Factor	1.35	Phase	3
Efficiency	64.3 %	Power Factor	61.1
Duty	Continuous	Insulation Class	B
Design Code	NO DESIGN CODE	KVA Code	M
Frame	S56J	Enclosure	Drip Proof
Thermal Protection	No	Ambient Temperature	40 °C
Drive End Bearing Size	6203	Opp Drive End Bearing Size	6203
UL	Recognized	CSA	Y
CE	N	IP Code	12

Technical Specifications

Electrical Type	Squirrel Cage Induction Run	Starting Method	Across The Line
Poles	4	Rotation	Reversible
Resistance Main	0 Ohms	Mounting	Round
Motor Orientation	Horizontal	Drive End Bearing	Ball
Opp Drive End Bearing	Ball	Frame Material	Rolled Steel
Shaft Type	J	Overall Length	10.00 in
Frame Length	5.50 in	Shaft Diameter	0.625 in
Shaft Extension	2.44 in	Assembly/Box Mounting	F1 ONLY
Connection Drawing	005010.01	Outline Drawing	032113-550

This is an uncontrolled document once printed or downloaded and is subject to change without notice. Date Created:14/10/2020

032113



3/8-16 UNC 2B TAP x .56 DEEP
(4) REQ'D. ON A ø5.875 B.C.


DASH NO.	"C"	"AD"
550	10.00	6.75
575	10.25	7.00
600	10.50	7.25
625	10.75	7.50
650	11.00	7.75
675	11.25	8.00
700	11.50	8.25

7/16-20 UNF 2A
RIGHT HAND THREAD

.004 H

1/2-14 NPT
CONDUIT HOLE

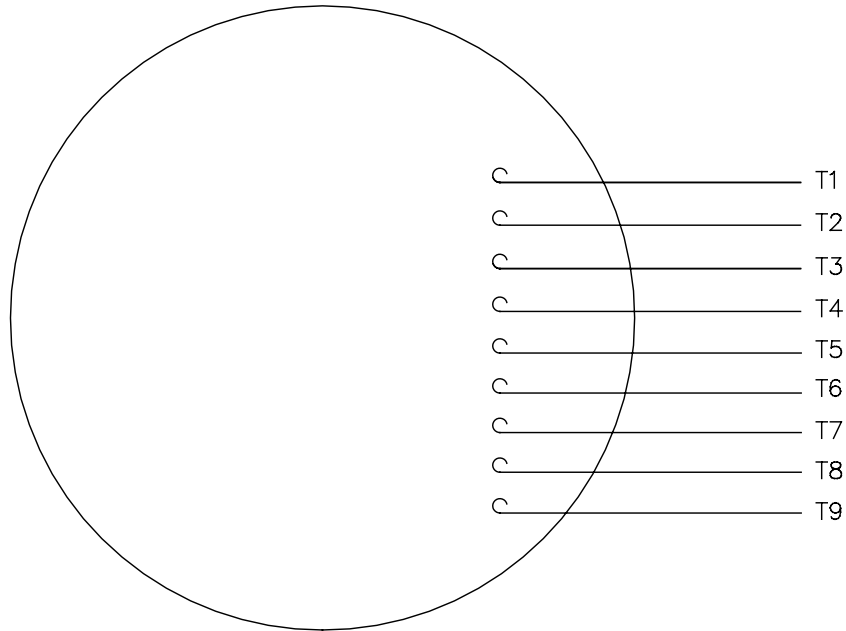
SCREWDRIVER SLOT
IN SHAFT

NO.		REVISION		BY & DATE		TOLERANCES UNLESS SPECIFIED		 ELECTRIC MOTORS GEARMOTORS AND DRIVES	DRAWN VS 3/6/2013			
						DEC.	INCHES		CHK			
						.X	±.1		TITLE OUTLINE - S56J FRAME "C" FACE MOUNT - DRIP PROOF	APPD		
						.XX	±.03			SCALE 1=2		
						.XXX	±.005			REF 031731		
						.XXXX	±.0005	FMF				
						ANG	±1/2'	MAT'L.	PREV			
						RFP		CAD FILE	032113	SIZE	DRAWING NO.	REV.
						DIST				A	032113	

THIS DRAWING IN DESIGN AND DETAIL IS OUR PROPERTY AND MUST NOT BE USED EXCEPT IN CONNECTION WITH OUR WORK ALL RIGHTS OF DESIGN AND INVENTION ARE RESERVED THIS IS AN ELECTRONICALLY GENERATED DOCUMENT - DO NOT SCALE THIS PRINT

005010-01

VIEW FROM OUTSIDE OF MOTOR AT SWITCH END.



VOLTAGE	L1	L2	L3	JOIN & INSULATE
HIGH	T1	T2	T3	(T4,T7) (T5,T8) (T6,T9)
LOW	T1,T7	T2,T8	T3,T9	T4,T5,T6

				TOLERANCES UNLESS SPECIFIED		REGAL ™ Regal Beloit America, Inc.		DRAWN RDW 04/12/02			
				DEC.	INCHES			CHK			
				.X	±.1			APPD			
				.XX	±.01	TITLE EXTERNAL WIRING DIAGRAM 3 PHASE W/O PROTECTOR		SCALE 1=1			
				.XXX	±.005			REF FIG.2-51			
A	UPDATED TO REGAL LOGO	SAJ 06/26/15	AJY	.XXXX	±.0005	MAT'L DECAL - 004014		FMF			
NO.	REVISION	BY & DATE	CHK	ANG	±1/2"	FINISH		PREV			
THIS DRAWING IN DESIGN AND DETAIL IS OUR PROPERTY AND MUST NOT BE USED EXCEPT IN CONNECTION WITH OUR WORK ALL RIGHTS OF DESIGN AND INVENTION ARE RESERVED THIS IS AN ELECTRONICALLY GENERATED DOCUMENT - DO NOT SCALE THIS PRINT				RFP	04/12/02	CAD FILE		00501001	SIZE	DRAWING NO.	REV.
				DIST		BRF-NLV		A	005010-01	A	



P.O. BOX 8003
WAUSAU, WI 54401-8003
PH. 715-675-3311

DATA VOLTS: 460

CERTIFICATION DATA SHEET

CONN. DIAGRAM: 005010.01
OUTLINE: 032113-550
WINDING: TE48414

CAT #: 103723.00

DR 3

TYPICAL MOTOR PERFORMANCE DATA

HP	KW	SYNC RPM	FL RPM	FRAME	ENCLOSURE	TYPE	KVA CODE	DESIGN	
0.33	0.25	1800	1725	S6J	DP	TDR	N	B	
PH	HZ	VOLTS	AMPS	START TYPE	DUTY	INSL	S.F.	AMB	ELEV.
3	60	208-230/460	1.7-1.65/82	ACROSS THE LINE	CONT	B	1.15	40	3300
F.L. EFF		66.0	3/4 LD EFF	60.0	1/2 LD EFF	51.0	GTD EFF	ELECT. TYPE	
F.L. PF		56.0	3/4 LD PF	50.0	1/2 LD PF	40.5	64.0	SQ CAGE IND RUN	
F.L. TORQUE		LR AMPS @ 460 V		L.R. TORQUE		B.D. TORQUE		F.L. RISE (°C)	
1.00 LB-FT		4.7		4.3 LB-FT 430%		4.7 LB-FT		470% 30	
PRESSURE @ 3		POWER	ROTOR WK²	MAX LOAD WK²	SAFE STALL TIME	STARTS/HOUR	MOTOR WGT		
56 DBA		65 DBA	0.04 LB-FT²	0 LB-FT²	10 SEC.	0	17 LB.		

*** SUPPLEMENTAL INFORMATION ***

DE BRACKET TYPE	ODE BRACKET TYPE	MOUNT TYPE	MOTOR ORIENTATION	SEVERE DUTY	HAZARDOUS LOCATION	DRIIP COVER	SCREENS	PAINT
C-FACE	STANDARD	ROUND	HORIZONTAL	NO	NONE	NO	NONE	JE-LEESON(ENAM)
BEARINGS DE	GREASE	SHAFT TYPE	SPECIAL DE	SPECIAL ODE	SHAFT MATERIAL	FRAME MATERIAL		
BALL 6203	POLYREX EM	JET PUMP	NONE	NONE	416 STAINLESS (C-503)	ROLLED STEEL		

THERMOSTATS	PROTECTORS	WDG RTD's	BRG RTD's	THERMISTORS	CONTROL	SPACE HEATERS
NONE	NOT	NONE	NONE	NONE	FALSE	NA
R1 (ohms/ph)	R2 (ohms/ph)	X1 (ohms/ph)	X2 (ohms/ph)	Xm (ohms/ph)	VIBRATION (in/sec)	FLOAT ODE
0	0	0	0	0	0.080	ODE

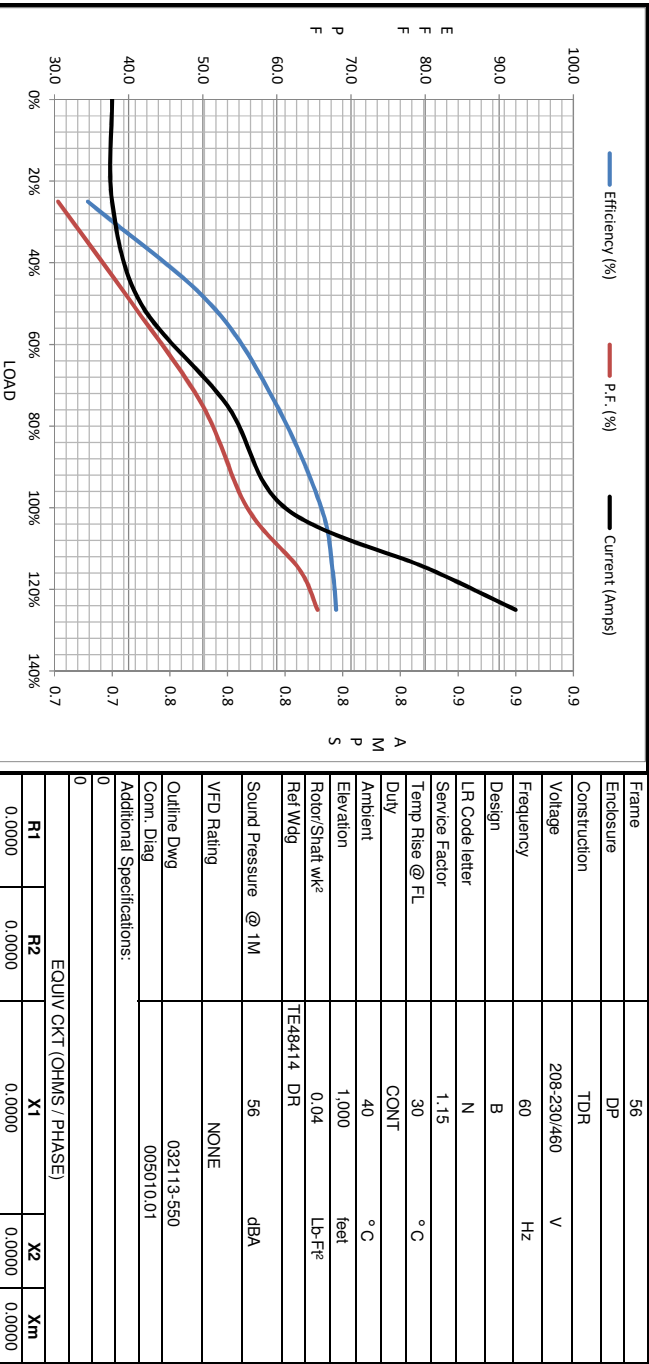
* NOT TESTED		INVERTER TORQUE: NONE	
		INV. HP SPEED RANGE: NONE	
		ENCODER: NONE	
		BRAKE: NONE	
		FT-LB: NA	
		VOLTAGE: NONE	
		NONE PPR	

DATE: 1/23/2018	UL: Y-(LEESON UL REC)
-----------------	-----------------------



Motor Load Data						
Load	0%	25%	50%	75%	100%	LR
Current (Amps)	0.74	0.74	0.75	0.78	0.80	4.7
Torque (ft-lb)	0.00	0.25	0.50	0.75	1.00	4.3
RPM	1800	1780	1770	1750	1725	0
Efficiency (%)		34.5	51.0	60.0	66.0	
P.F. (%)	20.0	30.5	40.5	50.0	56.0	83.0

Motor Speed Data						Information Block																					
Speed (RPM)	LR	Pull-Up	BD	Rated	Idle	HP	Sync. RPM	Frame	Enclosure	Construction	Voltage	Frequency	Design	LR Code letter	Service Factor	Temp Rise @ FL	Duty	Ambient	Elevation	Rotor/Shaft wk²	Ref Wdg	Sound Pressure @ 1M	VFD Rating	Outline Dwg	Conn. Diag	Additional Specifications:	
0		900	1500	1725	1800	0.3	1800	56	DP	TDR	208-230/460	60	B	N	1.15	30	CONT	40 °C	1,000	0.04	TE48414 DR	56	dB(A)	NONE	032113-550	005010.01	
Current (Amps)	4.7	4.0	3.2	0.80	0.74																						
Torque (ft-lb)	4.3	3.9	4.7	1.00	0.00																						



EQUIV CKT (OHMS / PHASE)	R1	R2	X1	X2	Xm
	0.0000	0.0000	0.0000	0.0000	0.0000

