

PRODUCT INFORMATION PACKET



Model No: C6T46DR2D

Catalog No: 111957.00

..1/2-.22HP..1725/1140RPM.56H.DP.460V.3PH.60HZ.CONT.40C.1.0SF.RESIL.C6T46DR2D.....FAN &
BLOWER.NOT.....

2 Speed



Regal and Leeson are trademarks of Regal Beloit Corporation or one of its affiliated companies.

©2018 Regal Beloit Corporation, All Rights Reserved. MC017097E

REGAL



Nameplate Specifications

| | | | |
|----------------------------|------------|------------------------|----------------|
| Output HP | 0.50 Hp | Output KW | 0.37 kW |
| Frequency | 60 Hz | Voltage | 460 V |
| Current | 0.90 A | Speed | 1725 rpm |
| Service Factor | 1 | Phase | 3 |
| Efficiency | 77 % | Duty | Continuous |
| Insulation Class | B | Design Code | NO DESIGN CODE |
| KVA Code | L | Frame | 56H |
| Enclosure | Drip Proof | Overload Protector | No |
| Ambient Temperature | 40 °C | Drive End Bearing Size | 6203 |
| Opp Drive End Bearing Size | 6203 | UL | Recognized |
| CSA | Y | CE | N |
| IP Code | 22 | | |

Technical Specifications

| | | | |
|-----------------------|-----------------------------|-----------------------|-----------------|
| Electrical Type | Squirrel Cage Induction Run | Starting Method | Across The Line |
| Poles | 4 | Rotation | Reversible |
| Mounting | Resilient Base | Motor Orientation | HORIZONTAL |
| Drive End Bearing | BALL | Opp Drive End Bearing | BALL |
| Frame Material | Rolled Steel | Shaft Type | NEMA 56 |
| Overall Length | 12.32 in | Frame Length | 6.50 in |
| Shaft Diameter | 0.625 in | Shaft Extension | 1.88 in |
| Assembly/Box Mounting | F1 ONLY | | |
| Outline Drawing | 029054-650 | Connection Diagram | 005046.01 |

4

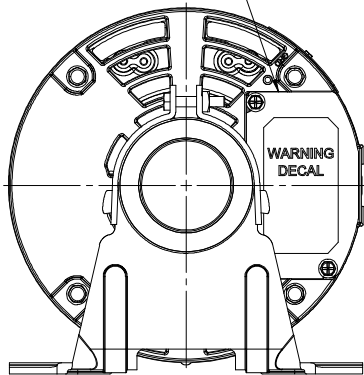
3

Uncontrolled Copy

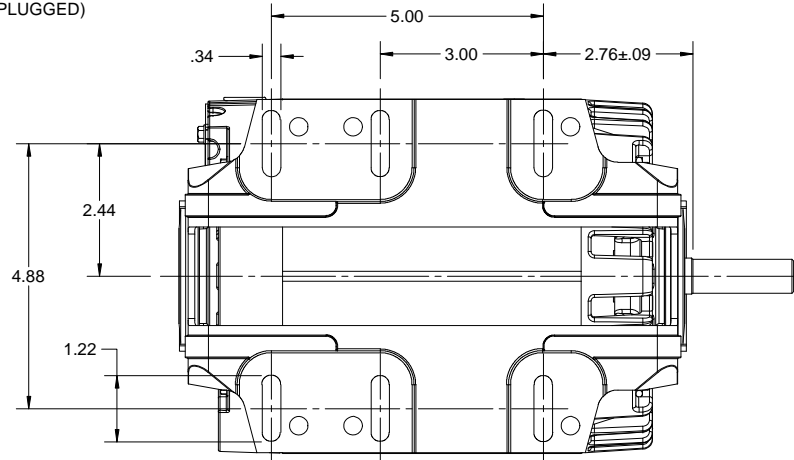
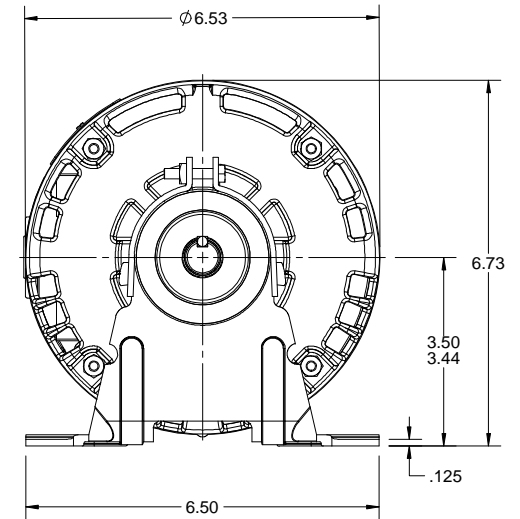
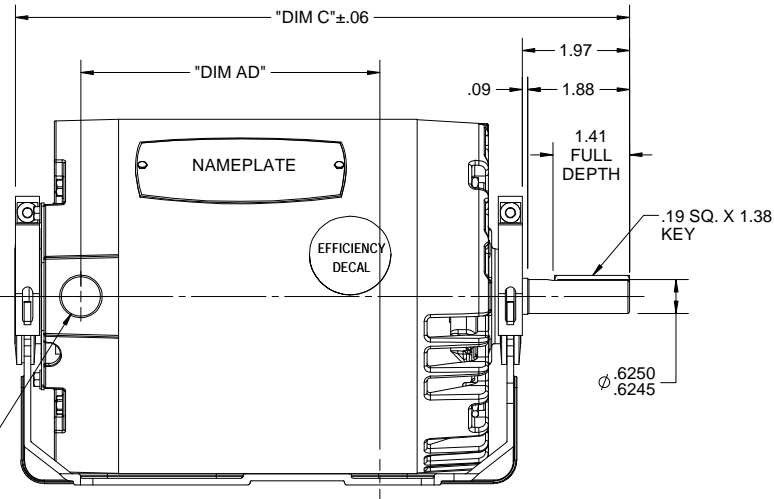
2

1

CONNECTION DECAL
UNDER COVER
(WHEN REQ'D.)



1/2-14 NPT
(PLUGGED)



| DASH NO. | "DIM C" | "DIM AD" |
|----------|---------|----------|
| -550 | 11.29 | 5.50 |
| -600 | 11.79 | 6.00 |
| -650 | 12.29 | 6.50 |
| -700 | 12.79 | 7.00 |
| -750 | 13.29 | 7.50 |

| DRAWING REVISION | REVISION BY | DATE |
|--|-------------|------|
| A | P. GASSER | |
| ECO | APPROVED BY | DATE |
| ECO-0128249 | | |
| ECO DESCRIPTION | | |
| RELEASED FOR PRODUCTION | | |
| COPYRIGHT REGAL BELOIT AMERICA, INC. ALL RIGHTS RESERVED. PROPRIETARY AND CONFIDENTIAL INFORMATION - THIS DOCUMENT IS THE PROPERTY OF REGAL BELOIT AMERICA, INC. (OWNER) AND CONTAINS OWNER'S PROPRIETARY INFORMATION. ANY PERSON, CORPORATION OR OTHER FIRM RECEIVING IT IS DEEMED, BY RECEIVING IT, TO AGREE THAT IT, AND/OR ANY PART OF IT, SHALL NOT BE DISCLOSED TO ANY PERSON, CORPORATION OR OTHER ENTITY, DUPLICATED, AND/OR USED, EXCEPT AS EXPRESSLY APPROVED IN WRITING IN ADVANCE BY OWNER. THIS DOCUMENT SHALL BE RETURNED TO OWNER UPON REQUEST. IT MAY BE SUBJECT TO CERTAIN RESTRICTIONS UNDER APPLICABLE EXPORT CONTROL LAWS AND REGULATIONS. | | |

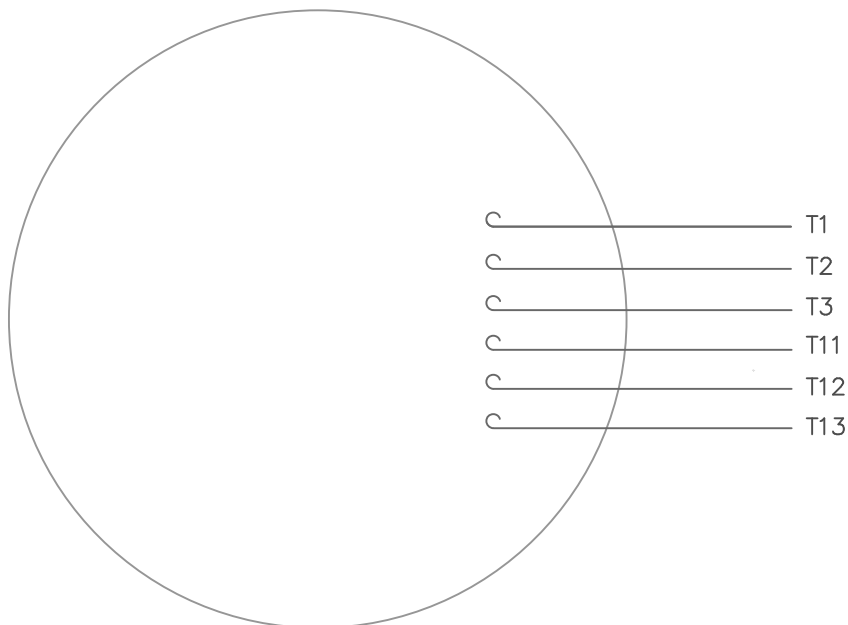
| TOLERANCES UNLESS OTHERWISE SPECIFIED: | ANGLE |
|--|-------|
| DEC. INCH mm | ±0.5° |
| .X ±0.1 [±2.5] | |
| .XX ±0.03 [±0.76] | |
| .XXX ±0.005 [±0.127] | |
| .XXXX ±0.0005 [±0.0127] | |
| REMOVE BURRS & BREAK SHARP | |
| EDGES: .003/.015 [0.076/.381] X 45° | |
| CORNER FILLETS: R.02 [51] | |
| MACHINED SURFACES: 125 INCH mm 3.2 | |
| mm SHOWN IN [BRACKETS] | |

| DRAWN BY | DATE |
|-------------|------------------------|
| P. GASSER | 07/21/2017 |
| APPROVED BY | DATE |
| | |
| REFERENCE | THIRD ANGLE PROJECTION |
| | |

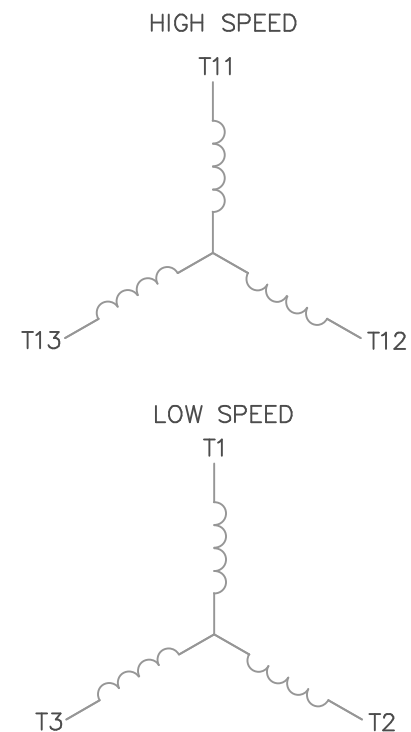
| REGAL™ Regal Beloit America, Inc. | |
|-----------------------------------|----------------|
| DESCRIPTION | |
| OUTLINE | |
| 56-FRAME, DRIP PROOF | |
| MATERIAL | PROCESS/FINISH |
| | |
| SIZE | DRAWING NUMBER |
| B | 029054 |
| SHEET | 1 OF 1 |

005046-01

VIEW FROM OUTSIDE OF MOTOR AT SWITCH END.



LINE LEADS



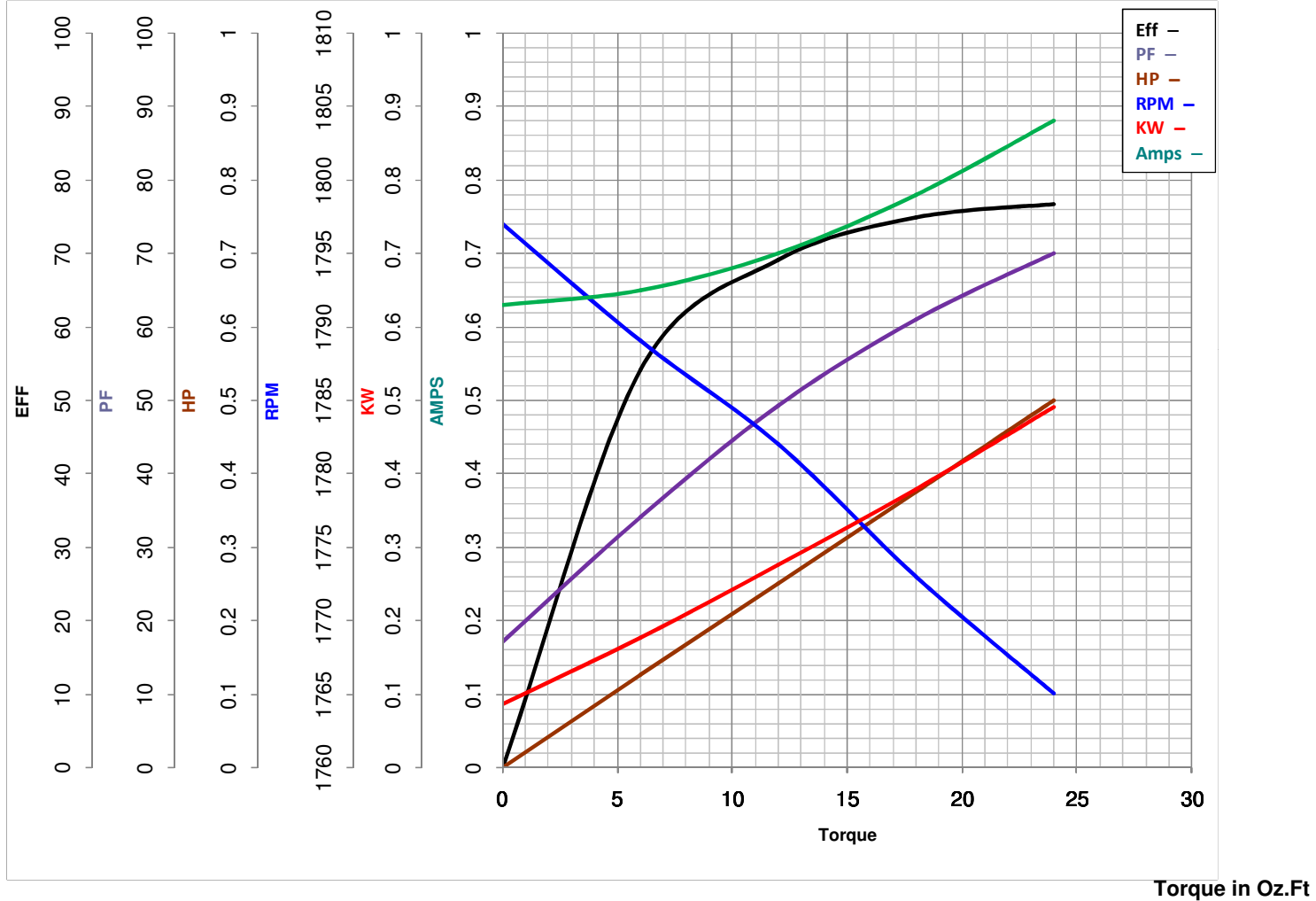
| | | | |
|------------|-----|-----|-----|
| | L1 | L2 | L3 |
| HIGH SPEED | T11 | T12 | T13 |
| LOW SPEED | T1 | T2 | T3 |

| | | | | | | | | | | |
|---|----------------|-----|----------|---------------------------------------|---------|-----------------------------|--|--|-----------|--------------------------|
| | | | | TOLERANCES UNLESS OTHERWISE SPECIFIED | | LEESON ELECTRIC CORPORATION | | | | |
| | | | | DECIMALS | | | | | | |
| | | | | .00 | ± .01 | DRAWN JRW 07/26/74 | TITLE EXTERNAL WIRING DIAGRAM TYPE "T" W/O PROTECTOR | | | |
| | | | | .000 | ± .005 | CH'K'D. WRK 08/05/74 | | | | |
| 3 | REDRAWN ON CAD | DBT | 06/30/97 | .0000 | ± .0005 | APPR. TEM 08/05/74 | MAT'L. DECAL – 004040 2WDG./2 SPEED 1Y–1Y | | | |
| NO. | REVISION | BY | DATE | FRACTIONS | ± 1/64 | SCALE 1=1 | | | | |
| THIS DRAWING IN DESIGN AND DETAIL IS OUR PROPERTY AND MUST NOT BE USED EXCEPT IN CONNECTION WITH OUR WORK ALL RIGHTS OF DESIGN AND INVENTION ARE RESERVED | | | | ANGLES | ± 1/2° | REF. WT6364 | FINISH | | SIZE A | DRAWING NO. 005046–01 |
| | | | | INCH/MM | | FMF 7464D13 | | | | |



LEESON ELECTRIC CORPORATION

TYPICAL PERFORMANCE CURVE for AC MOTOR

Model No 111957.00Curve at 460
60
0.5Volts
HZ
HPHP 0.5&0.22PHASE 3VOLTS 460&460Catalog No 111957.00HZ 60&60RPM 1725&1140

FL TORQUE 24 Oz.Ft
 BD TORQUE 70.7 Oz.Ft
 LR TORQUE 48 Oz.Ft

FL AMPS 0.9
 PU TORQUE 34.7 Oz.Ft
 LR AMPS 5.26

WINDING T63(4-6)24-2

Date 5/28/2018