

PRODUCT INFORMATION PACKET



Model No: 113902.00
Catalog No: 113902.00
0.75 HP Special Voltage Motor, 1 phase, 3000 RPM, 110/220 V, 56 Frame, ODP
50 Hz Motors



Regal and Leeson are trademarks of Regal Beloit Corporation or one of its affiliated companies.
©2020 Regal Beloit Corporation, All Rights Reserved. MC017097E

The Regal logo is located in the bottom right corner. It features the word "REGAL" in a white, sans-serif font, set against a dark blue background that has a diagonal gradient and a fine, dotted texture.



Nameplate Specifications

Output HP	0.75 Hp	Output KW	0.56 kW
Frequency	50 Hz	Voltage	110/220 V
Current	11.2/5.6 A	Speed	2850 rpm
Service Factor	1.25	Phase	1
Efficiency	62 %	Power Factor	72
Duty	Continuous	Insulation Class	B
Design Code	L	KVA Code	K
Frame	56	Enclosure	Drip Proof
Thermal Protection	No	Ambient Temperature	40 °C
Drive End Bearing Size	6203	Opp Drive End Bearing Size	6203
UL	Recognized	CSA	Y
CE	Y	IP Code	22

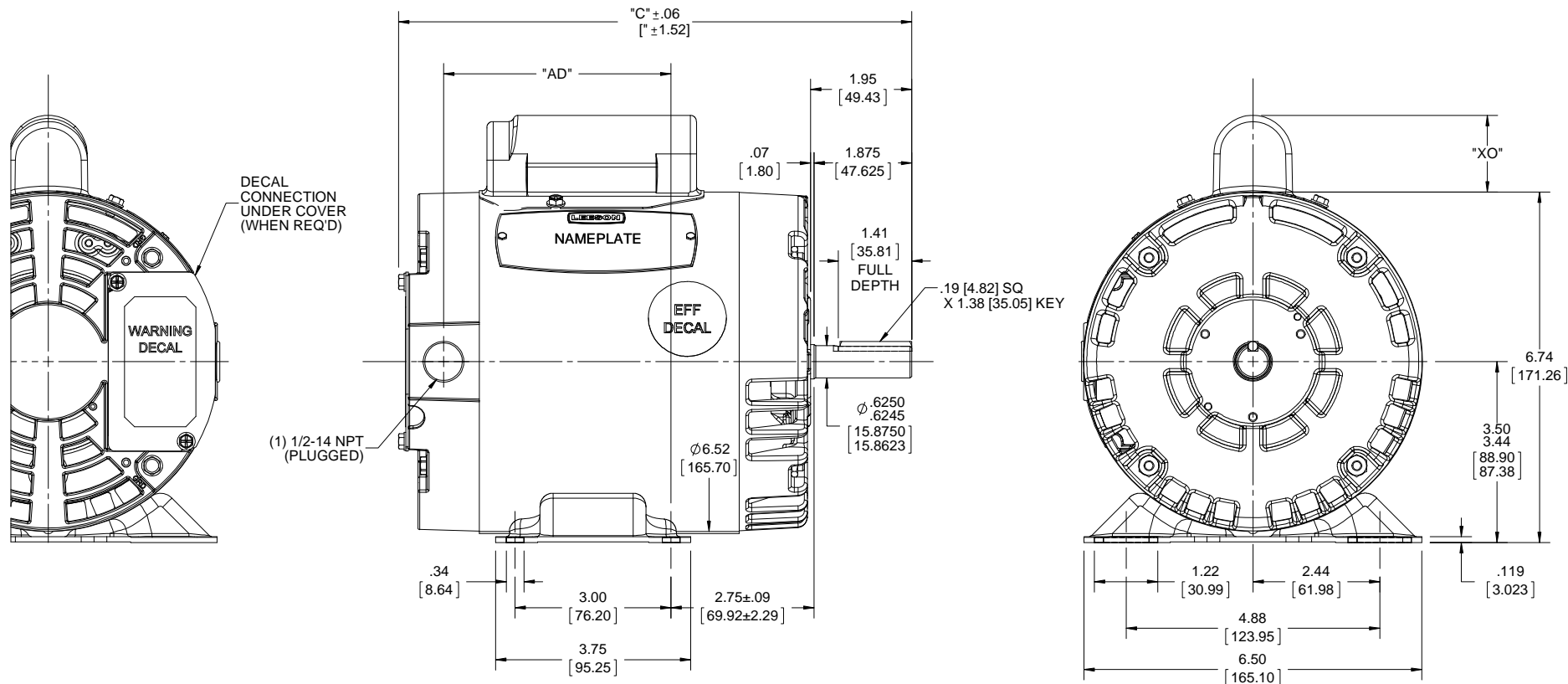
Technical Specifications

Electrical Type	Capacitor Start Induction Run	Starting Method	Across The Line
Poles	2	Rotation	Selective Counterclockwise
Resistance Main	2.84 Ohms	Mounting	Rigid base
Motor Orientation	Horizontal	Drive End Bearing	Ball
Opp Drive End Bearing	Ball	Frame Material	Rolled Steel
Shaft Type	NEMA 56	Overall Length	10.34 in
Frame Length	5.50 in	Shaft Diameter	0.625 in
Shaft Extension	1.88 in	Assembly/Box Mounting	F1 ONLY
Outline Drawing	028601-550B	Connection Drawing	005390.01

This is an uncontrolled document once printed or downloaded and is subject to change without notice. Date Created:14/10/2020

B

B



A

A

DASH NO.	"C"	"AD"		
500	9.87 [250.70]	4.38 [111.25]		
550	10.37 [263.40]	4.88 [123.95]	CAP DASH.	"XO"
600	10.87 [276.10]	5.38 [136.65]	A	1.48 [37.59]
650	11.37 [288.80]	5.88 [149.35]	B	1.94 [49.28]
700	11.87 [301.50]	6.38 [162.05]	C	2.19 [55.62]

4

DRAWING REVISION C	REVISION BY A.SUPPANNAVAR	DATE 12/21/2017
ECO ECO-0143018	APPROVED BY PK	DATE 04/10/2018
ECO DESCRIPTION OUTLINE CONVERSION PROJECT		
COPYRIGHT REGAL BELOIT AMERICA, INC. ALL RIGHTS RESERVED. PROPRIETARY AND CONFIDENTIAL INFORMATION - THIS DOCUMENT IS THE PROPERTY OF REGAL BELOIT AMERICA, INC. ("OWNER") AND CONTAINS OWNER'S PROPRIETARY INFORMATION. ANY PERSON, CORPORATION OR OTHER FIRM RECEIVING IT IS DEEMED, BY RECEIVING IT, TO AGREE THAT IT, AND/OR ANY PART OF IT, SHALL NOT BE DISCLOSED TO ANY PERSON, CORPORATION OR OTHER ENTITY, DUPLICATED, AND/OR USED, EXCEPT AS EXPRESSLY APPROVED IN WRITING IN ADVANCE BY OWNER. THIS DOCUMENT SHALL BE RETURNED TO OWNER UPON REQUEST. IT MAY BE SUBJECT TO CERTAIN RESTRICTIONS UNDER APPLICABLE EXPORT CONTROL LAWS AND REGULATIONS.		

3

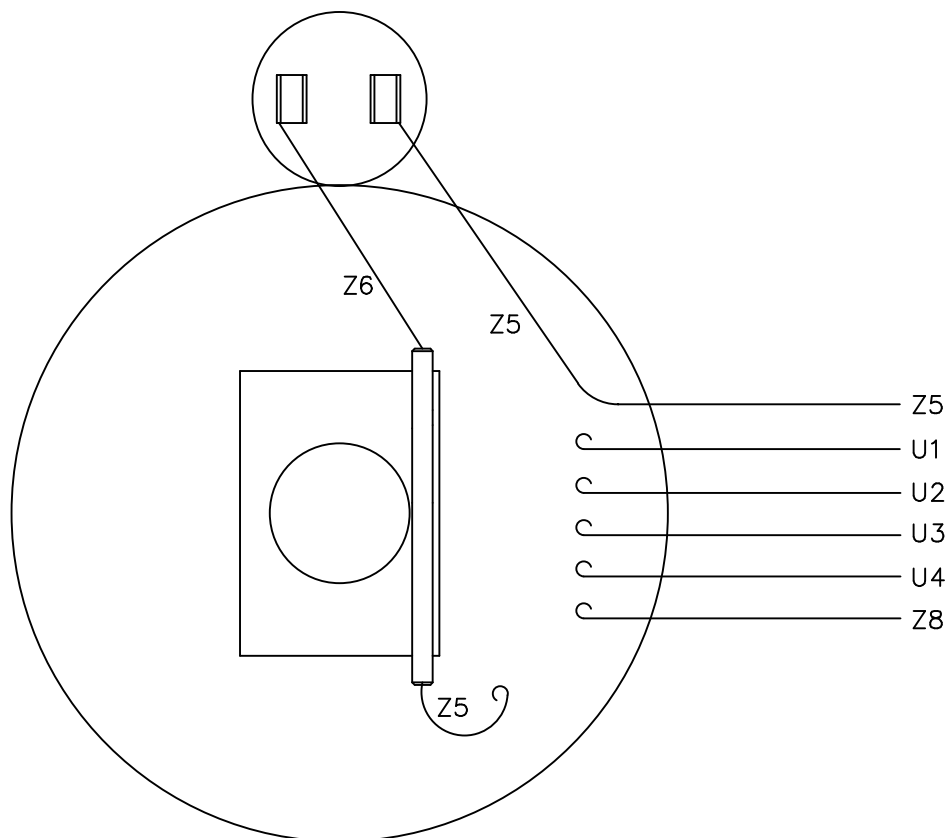
TOLERANCES UNLESS OTHERWISE SPECIFIED:			
DEC.	INCH	mm	ANGLE
.X	$\pm .01$	[± 2.5]	$\pm 0.5^\circ$
.XX	± 0.03	[± 0.76]	
.XXX	± 0.005	[± 0.127]	
.XXXX	± 0.0005	[± 0.0127]	
REMOVE BURRS & BREAK SHARP			
EDGES: .003/.015 [.076/.381] X 45°			
CORNER FILLETS: R.02 [.51]			
MACHINED SURFACES: 125/3.2			
mm SHOWN IN [BRACKETS]			

2

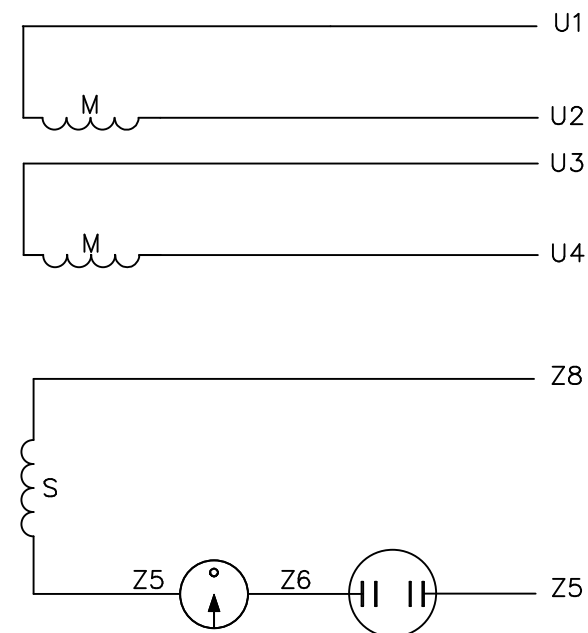
DRAWN BY RDW	REGAL™ Regal Beloit America, Inc.	
DATE 7/1/04	DESCRIPTION OUTLINE	
APPROVED BY SW	56-FRAME DRIP PROOF -RIGID	
DATE 7/1/04	MATERIAL	PROCESS/FINISH
REFERENCE 028601	DRAWING NUMBER 028601	SHEET 1 OF 1
THIRD ANGLE PROJECTION	SIZE B	

1


VIEW FROM OUTSIDE OF MOTOR AT SWITCH END.



LINE LEADS



	ROTATION FACING LEAD END	L1	L2	JOIN
HIGH VOLT	C.C.W.	U1	U4 Z5	U2,U3 Z8
	C.W.	U1	U4 Z8	U2,U3 Z5
LOW VOLT	C.C.W.	U1,U3 Z8	U2,U4 Z5	---
	C.W.	U1,U3 Z5	U2,U4 Z8	---

				TOLERANCES UNLESS SPECIFIED			ELECTRIC MOTORS GEARMOTORS AND DRIVES		DRAWN RSK 09/09/96	
				DEC.	INCHES				CHK	
				.X	±.1				APPD	
				.XX	±.01		TITLE		SCALE	1=1
				.XXX	±.005		EXTERNAL WIRING DIAGRAM TYPE "C" W/O PROTECTOR		REF	005005-01
				.XXXX	±.0005	MAT'L.	DECAL - 080642		FMF	114964.00
NO.	REVISION	BY & DATE	CHK	ANG	±1/2"	FINISH	LEESON CANADA		PREV	
THIS DRAWING IN DESIGN AND DETAIL IS OUR PROPERTY AND MUST NOT BE USED EXCEPT IN CONNECTION WITH OUR WORK ALL RIGHTS OF DESIGN AND INVENTION ARE RESERVED THIS IS AN ELECTRONICALLY GENERATED DOCUMENT - DO NOT SCALE THIS PRINT				RFP		CAD FILE	00539001		SIZE	DRAWING NO.
				DIST					A	005390-01
										REV.



CERTIFICATION DATA SHEET

1051 CHEYENNE AVE.
GRAFTON, WI 53024
PH. 262-377-8810

CONN. DIAGRAM: 005390.01

CATALOG #: 113902.00

OUTLINE: 028601-550B

MOUNTING: F1 ONLY

WINDING #: C632227 DR 5 A

TYPICAL MOTOR PERFORMANCE DATA

HP	KW	SYNC. RPM	F.L. RPM	FRAME	ENCLOSURE	KVA CODE	DESIGN
3/4	0.56	3000	2850	56	DP	K	L

PH	Hz	VOLTS	AMPS	START TYPE	DUTY	INSL	S.F.	AMB°C
1	50	110/220	11.2/5.6	ACROSS THE LINE	CONTINUOUS	B4	1.25	40

FULL LOAD EFF:	62	3/4 LOAD EFF:	59	1/2 LOAD EFF:	51	GTD. EFF	ELEC. TYPE
FULL LOAD PF:	72	3/4 LOAD PF:	64	1/2 LOAD PF:	54.2	57.5	CAP START IND RUN

F.L. TORQUE	LOCKED ROTOR AMPS	L.R. TORQUE	B.D. TORQUE	F.L. RISE°C
21.9 OZ-FT	58.4 / 29.2	64 OZ-FT	296 %	64 OZ-FT 296 %
				31

SOUND PRESSURE @ 3 FT.	SOUND POWER	ROTOR WK^2	MAX. WK^2	SAFE STALL TIME	STARTS / HOUR	APPROX. MOTOR WGT
0 dBA	10 dBA	0.042 LB-FT^2	0 LB-FT^2	10 SEC.	0	30 LBS.

*** SUPPLEMENTAL INFORMATION ***

DE BRACKET TYPE	ODE BRACKET TYPE	MOUNT TYPE	ORIENTATION	SEVERE DUTY	HAZARDOUS LOCATION	D RIP COVER	SCREENS	PAINT
STANDARD	STANDARD	RIGID	HORIZONTAL	FALSE	NONE	FALSE	NONE	BLUE - LEESON (ENAMEL)

BEARINGS DE	ODE	GREASE	SHAFT TYPE	SPECIAL DE	SPECIAL ODE	SHAFT MATERIAL	FRAME MATERIAL
BALL	BALL	POLYREX EM	STANDARD 56	NONE	NONE	1144 STRESSPROOF (C-223)	ROLLED STEEL
6203	6203						

THERMO-PROTECTORS				THERMISTORS			SPACE HEATERS	
THERMOSTATS		PROTECTORS	WDG RTDs	BRG RTDs				
NONE		NOT	NONE	NONE	NONE		FALSE	NONE VOLTS

*

INVERTER TORQUE:	NONE
INV. HP SPEED RANGE:	NONE

ENCODER:	NONE
NONE	NONE
NONE	PPR

BRAKE:	NONE	NONE
NONE	P/N	NONE
NONE	NONE	NONE
NONE	FT-LB	NONE V NONE HZ

S



LEESON ELECTRIC CORPORATION

TYPICAL PERFORMANCE CURVE for AC MOTOR

Model No 113902.00Catalog No 113902.00

Curve at

220

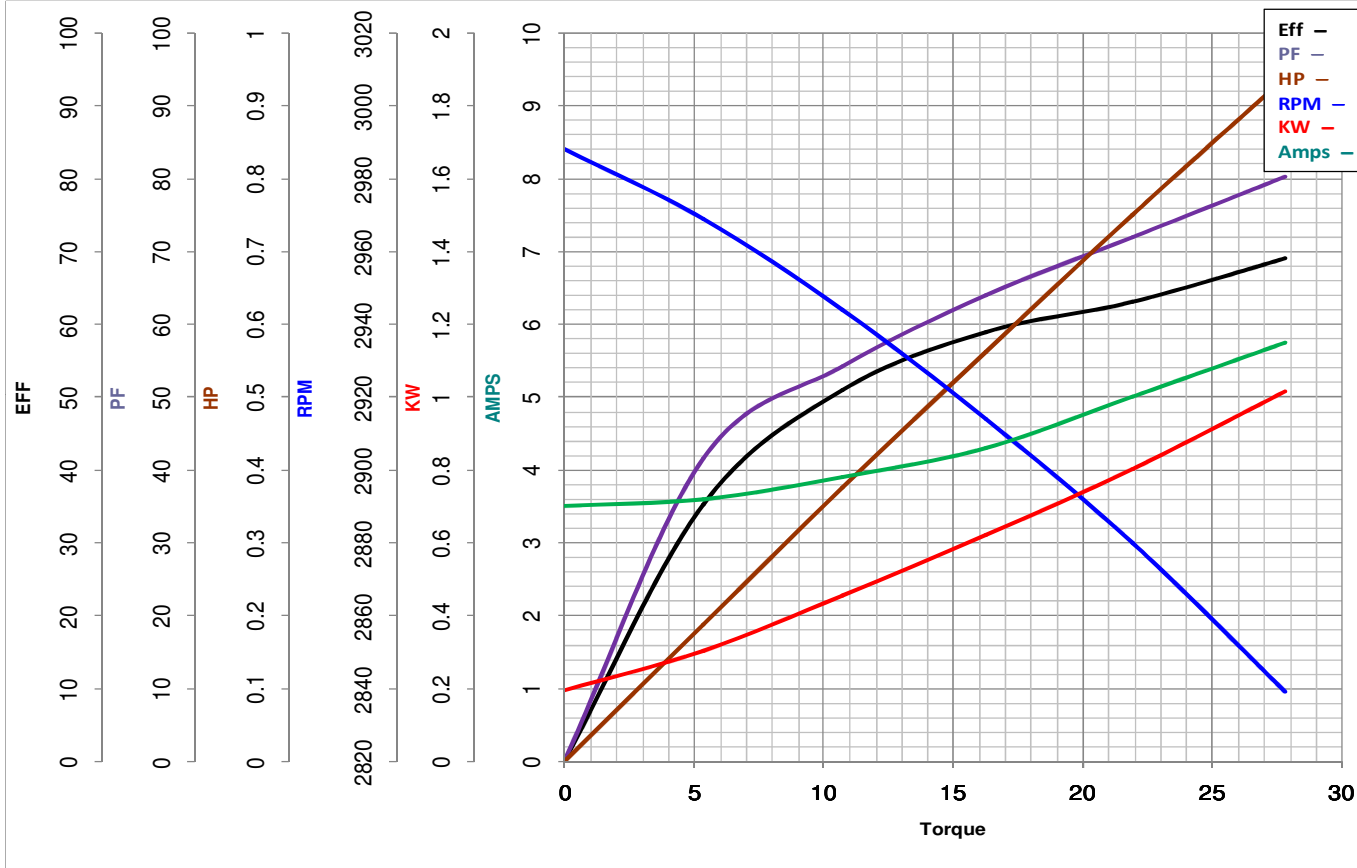
Volts

HP 0.75PHASE 150

HZ

0.75

HP

VOLTS 110/220HZ 50RPM 2850

Torque in Oz.Ft

FL TORQUE 21.9 Oz.FtBD TORQUE 64.0 Oz.FtLR TORQUE 64 Oz.FtFL AMPS 11.2/5.6PU TORQUE 51.0 Oz.FtLR AMPS 29.2

WINDING C632227-5

Date 3/12/2019