

# PRODUCT INFORMATION PACKET



Model No: 114560.00

Catalog No: 114560.00

0.50 HP Washdown Motor, 3 phase, 1800 RPM, 208-230/460 V, 56HC Frame, TENV  
Paint Free NEMA Washdown Motors



Regal and Leeson are trademarks of Regal Beloit Corporation or one of its affiliated companies.  
©2020 Regal Beloit Corporation, All Rights Reserved. MC017097E

The Regal logo is located in the bottom right corner, featuring the word "REGAL" in white capital letters inside a grey rectangular box with a slight shadow effect.



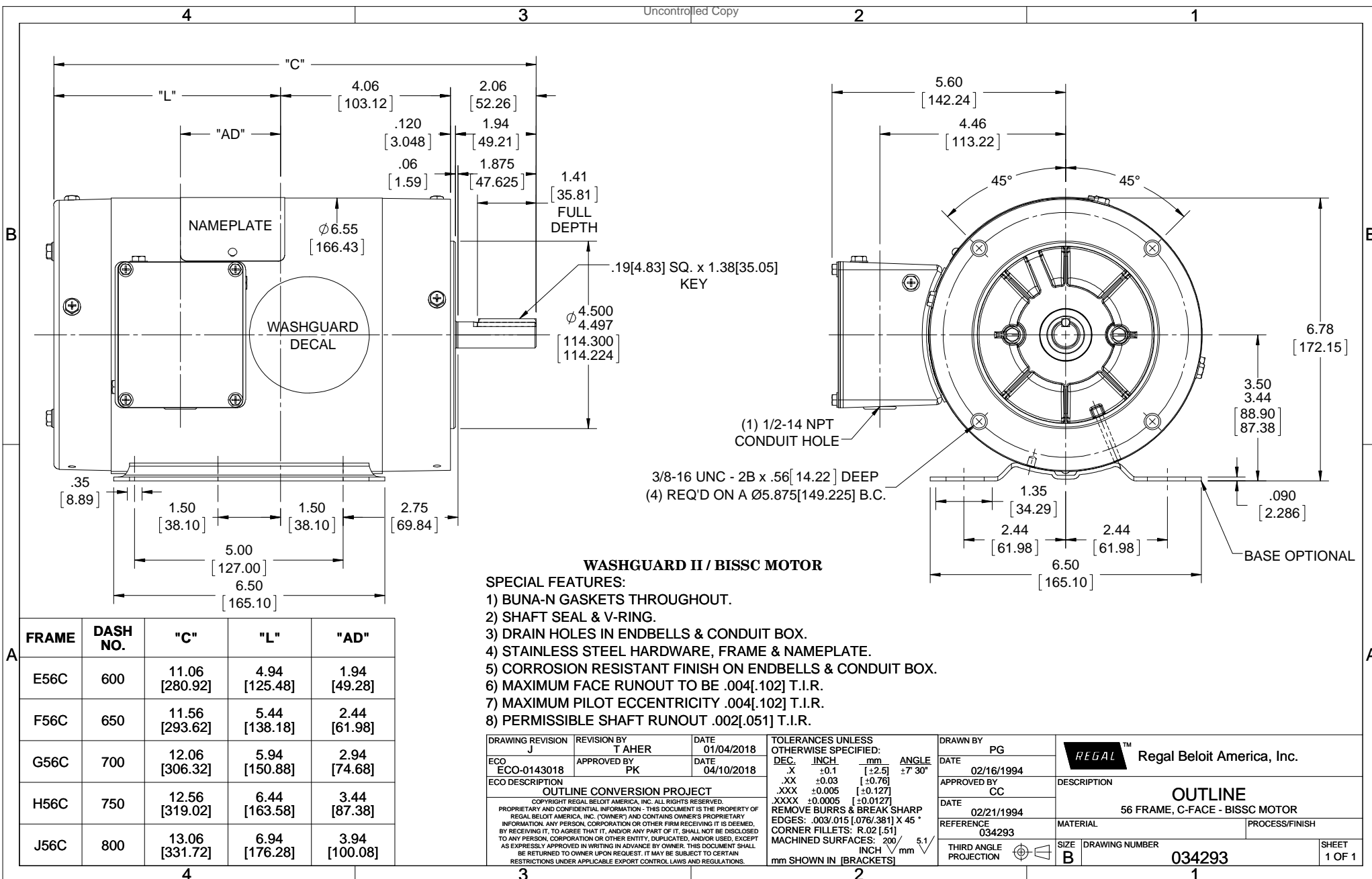
### Nameplate Specifications

Output HP	<b>0.50 Hp</b>	Output KW	<b>0.37 kW</b>
Frequency	<b>60 Hz</b>	Voltage	<b>208-230/460 V</b>
Current	<b>1.6/0.80 A</b>	Speed	<b>1725 rpm</b>
Service Factor	<b>1.15</b>	Phase	<b>3</b>
Efficiency	<b>78.5 %</b>	Power Factor	<b>74</b>
Duty	<b>Continuous</b>	Insulation Class	<b>F</b>
Design Code	<b>B</b>	KVA Code	<b>K</b>
Frame	<b>56HC</b>	Enclosure	<b>Totally Enclosed Non Ventilated</b>
Thermal Protection	<b>No</b>	Ambient Temperature	<b>40 °C</b>
Drive End Bearing Size	<b>6205</b>	Opp Drive End Bearing Size	<b>6203</b>
UL	<b>Recognized</b>	CSA	<b>Y</b>
CE	<b>N</b>	IP Code	<b>55</b>

### Technical Specifications

Electrical Type	<b>Squirrel Cage Induction Run</b>	Starting Method	<b>Across The Line</b>
Poles	<b>4</b>	Rotation	<b>Reversible</b>
Resistance Main	<b>8.17 Ohms</b>	Mounting	<b>Rigid base</b>
Motor Orientation	<b>Horizontal</b>	Drive End Bearing	<b>Ball</b>
Opp Drive End Bearing	<b>Ball</b>	Frame Material	<b>Stainless Steel</b>
Shaft Type	<b>NEMA 56</b>	Overall Length	<b>11.56 in</b>
Frame Length	<b>6.50 in</b>	Shaft Diameter	<b>0.625 in</b>
Shaft Extension	<b>1.88 in</b>	Assembly/Box Mounting	<b>F1 ONLY</b>
Connection Drawing	<b>005010.01</b>	Outline Drawing	<b>034293-650</b>

This is an uncontrolled document once printed or downloaded and is subject to change without notice. Date Created:14/10/2020



3/8-16 UNC - 2B x .56[14.22] DEEP  
 (4) REQ'D ON A Ø5.875[149.225] B.C.

**WASHGUARD II / BISSC MOTOR**

**SPECIAL FEATURES:**

- 1) BUNA-N GASKETS THROUGHOUT.
- 2) SHAFT SEAL & V-RING.
- 3) DRAIN HOLES IN ENDBELLS & CONDUIT BOX.
- 4) STAINLESS STEEL HARDWARE, FRAME & NAMEPLATE.
- 5) CORROSION RESISTANT FINISH ON ENDBELLS & CONDUIT BOX.
- 6) MAXIMUM FACE RUNOUT TO BE .004[.102] T.I.R.
- 7) MAXIMUM PILOT ECCENTRICITY .004[.102] T.I.R.
- 8) PERMISSIBLE SHAFT RUNOUT .002[.051] T.I.R.

FRAME	DASH NO.	"C"	"L"	"AD"
E56C	600	11.06 [280.92]	4.94 [125.48]	1.94 [49.28]
F56C	650	11.56 [293.62]	5.44 [138.18]	2.44 [61.98]
G56C	700	12.06 [306.32]	5.94 [150.88]	2.94 [74.68]
H56C	750	12.56 [319.02]	6.44 [163.58]	3.44 [87.38]
J56C	800	13.06 [331.72]	6.94 [176.28]	3.94 [100.08]

DRAWING REVISION J	REVISION BY T AHER	DATE 01/04/2018
ECO ECO-0143018	APPROVED BY PK	DATE 04/10/2018
ECO DESCRIPTION OUTLINE CONVERSION PROJECT		
<small>COPYRIGHT REGAL BELOIT AMERICA, INC. ALL RIGHTS RESERVED.                  PROPRIETARY AND CONFIDENTIAL INFORMATION - THIS DOCUMENT IS THE PROPERTY OF                  REGAL BELOIT AMERICA, INC. (OWNER) AND CONTAINS OWNER'S PROPRIETARY                  INFORMATION. ANY PERSON, CORPORATION OR OTHER FIRM RECEIVING IT IS DEEMED,                  BY RECEIVING IT, TO AGREE THAT IT, AND/OR ANY PART OF IT, SHALL NOT BE DISCLOSED                  TO ANY PERSON, CORPORATION OR OTHER ENTITY, DUPLICATED, AND/OR USED, EXCEPT                  AS EXPRESSLY APPROVED IN WRITING IN ADVANCE BY OWNER. THIS DOCUMENT SHALL                  BE RETURNED TO OWNER UPON REQUEST. IT MAY BE SUBJECT TO CERTAIN                  RESTRICTIONS UNDER APPLICABLE EXPORT CONTROL LAWS AND REGULATIONS.</small>		

TOLERANCES UNLESS OTHERWISE SPECIFIED:		
DEC.	INCH	mm
.X	±0.1	[±2.5]
.XX	±0.03	[±0.76]
.XXX	±0.005	[±0.127]
.XXXX	±0.0005	[±0.0127]
REMOVE BURRS & BREAK SHARP EDGES: .003/.015 [0.076/.381] X 45°		
CORNER FILLETS: R.02 [.51]		
MACHINED SURFACES: 200 INCH 5.1 mm		

DRAWN BY PG	DATE 02/16/1994
APPROVED BY CC	DATE 02/21/1994
REFERENCE 034293	THIRD ANGLE PROJECTION

Regal Beloit America, Inc.	
DESCRIPTION OUTLINE 56 FRAME, C-FACE - BISSC MOTOR	
MATERIAL	PROCESS/FINISH
SIZE B	DRAWING NUMBER 034293
SHEET 1 OF 1	

005010-01

VIEW FROM OUTSIDE OF MOTOR AT SWITCH END.



VOLTAGE	L1	L2	L3	JOIN & INSULATE
HIGH	T1	T2	T3	(T4,T7) (T5,T8) (T6,T9)
LOW	T1,T7	T2,T8	T3,T9	T4,T5,T6

				TOLERANCES UNLESS SPECIFIED		<b>REGAL</b> ™ Regal Beloit America, Inc.		DRAWN RDW 04/12/02			
				DEC.	INCHES			CHK			
				.X	±.1			APPD			
				.XX	±.01	TITLE EXTERNAL WIRING DIAGRAM 3 PHASE W/O PROTECTOR		SCALE 1=1			
				.XXX	±.005			REF FIG.2-51			
A	UPDATED TO REGAL LOGO	SAJ 06/26/15	AJY	.XXXX	±.0005	MAT'L DECAL - 004014		FMF			
NO.	REVISION	BY & DATE	CHK	ANG	±1/2"	FINISH		PREV			
THIS DRAWING IN DESIGN AND DETAIL IS OUR PROPERTY AND MUST NOT BE USED EXCEPT IN CONNECTION WITH OUR WORK ALL RIGHTS OF DESIGN AND INVENTION ARE RESERVED THIS IS AN ELECTRONICALLY GENERATED DOCUMENT - DO NOT SCALE THIS PRINT				RFP	04/12/02	CAD FILE		00501001	SIZE	DRAWING NO.	REV.
				DIST		BRF-NLV		A	005010-01	A	

Data Sheet

Date: 1/30/2018

114560.00



Data @ 460 V

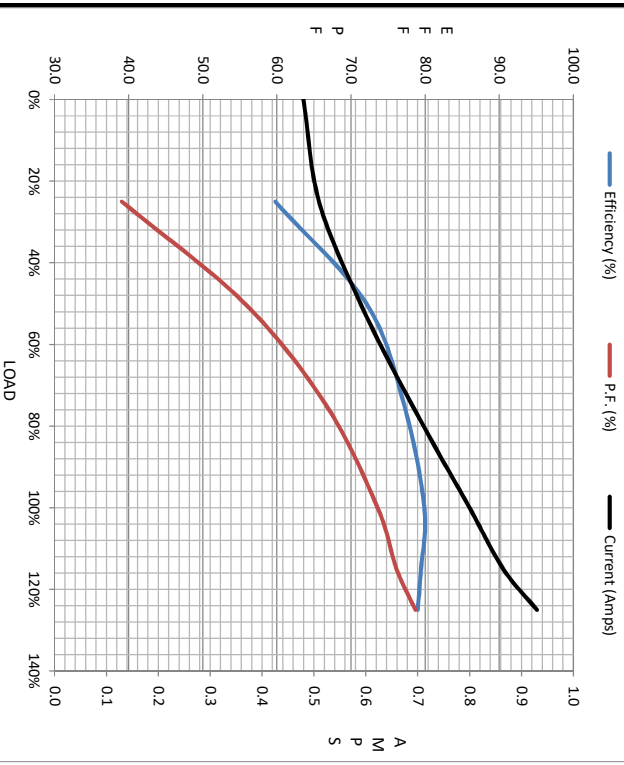
Motor Load Data								
Load	0%	25%	50%	75%	100%	115%	125%	LR
Current (Amps)	0.48	0.51	0.59	0.69	0.80	0.87	0.93	5.6
Torque (ft-lb)	0.00	95.7	191	287	383	6,875	479	1,353
RPM	1800	1785	1772	1759	1746	1,739	1729	0
Efficiency (%)		59.8	72.1	77.2	79.9	79.5	79.0	
P.F. (%)	16.1	39.1	55.7	66.7	73.6	76.2	78.7	0.0

Motor Speed Data

	LR	Pull-Up	BD	Rated	Idle
Speed (RPM)	0	900	1656	1746	1800
Current (Amps)	5.6	5.2	3.4	0.80	0.48
Torque (ft-lb)	1,353	1,243	1,532	383	0.00

Information Block

HP	0.5			
Sync. RPM	1800			
Frame	56			
Enclosure	TENV			
Construction	NA			
Voltage	208-230/460 V			
Frequency	60 Hz			
Design	B			
LR Code letter	K			
Service Factor	1.15			
Temp Rise @ FL	69 °C			
Duty	CONT			
Ambient	40 °C			
Elevation	1,000 feet			
Rotor/Shaft wk <sup>2</sup>	0.09 LB-Ft <sup>2</sup>			
Ref Wdg	T634250 NR			
Sound Pressure @ 1M	0 dBA			
VFD Rating	NONE			
Outline Dwg	034293-650			
Conn. Diag	005010.01			
Additional Specifications:				
0				
EQUIV CKT (OHMS / PHASE)				
R1	R2	X1	X2	Xm
0.0000	0.0000	0.0000	0.0000	0.0000



Speed - Torque Curve

