

PRODUCT INFORMATION PACKET



Model No: M6C34DK5A
Catalog No: 116707.00
3HP..3450RPM.56H.DP./230V.1PH.60HZ.CONT.MANUAL.40C.1.0SF.RIGID C.PRESSURE
WASHER.M6C34DK5A
Pressure Washers



Regal and Leeson are trademarks of Regal Beloit Corporation or one of its affiliated companies.
©2018 Regal Beloit Corporation, All Rights Reserved. MC017097E



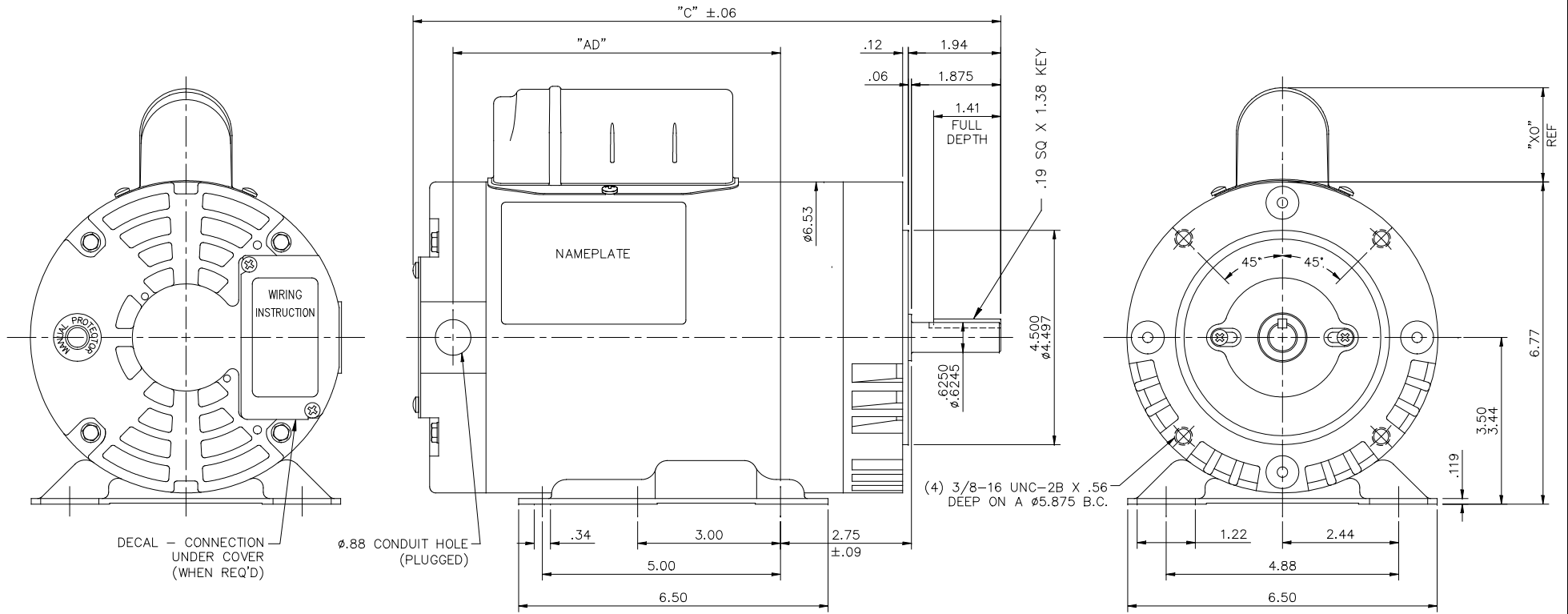


Nameplate Specifications

Output HP	3 Hp	Output KW	2.2 kW
Frequency	60 Hz	Voltage	230 V
Current	15.0 A	Speed	3450 rpm
Service Factor	1	Phase	1
Efficiency	76 %	Duty	Continuous
Insulation Class	F	Design Code	L
KVA Code	G	Frame	56HC
Enclosure	Drip Proof	Overload Protector	Manual
Ambient Temperature	40 °C	Drive End Bearing Size	6205
Opp Drive End Bearing Size	6203	UL	Recognized
CSA	Y	CE	N
IP Code	22		

Technical Specifications

Electrical Type	Capacitor Start Induction Run	Starting Method	Across The Line
Poles	2	Rotation	Selective Clockwise
Mounting	Rigid base	Motor Orientation	HORIZONTAL
Drive End Bearing	BALL	Opp Drive End Bearing	BALL
Frame Material	Rolled Steel	Shaft Type	NEMA 56
Overall Length	12.84 in	Frame Length	8.00 in
Shaft Diameter	0.625 in	Shaft Extension	1.88 in
Assembly/Box Mounting	F1 ONLY		
Outline Drawing	028717-800B	Connection Diagram	005028.03

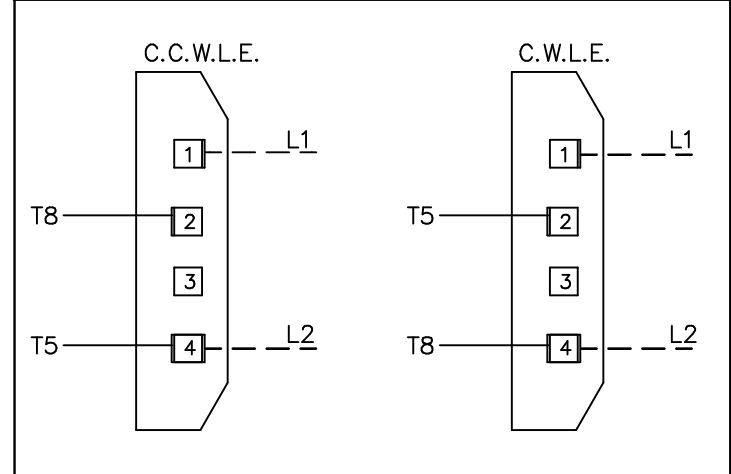
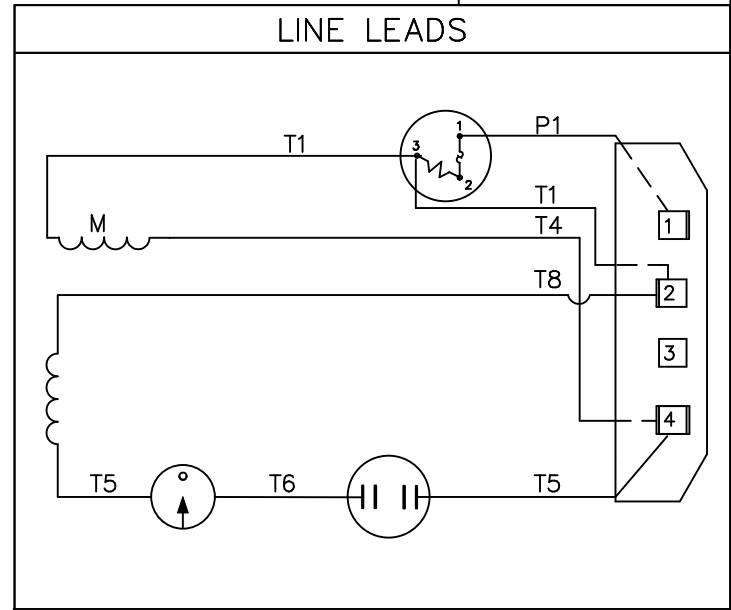
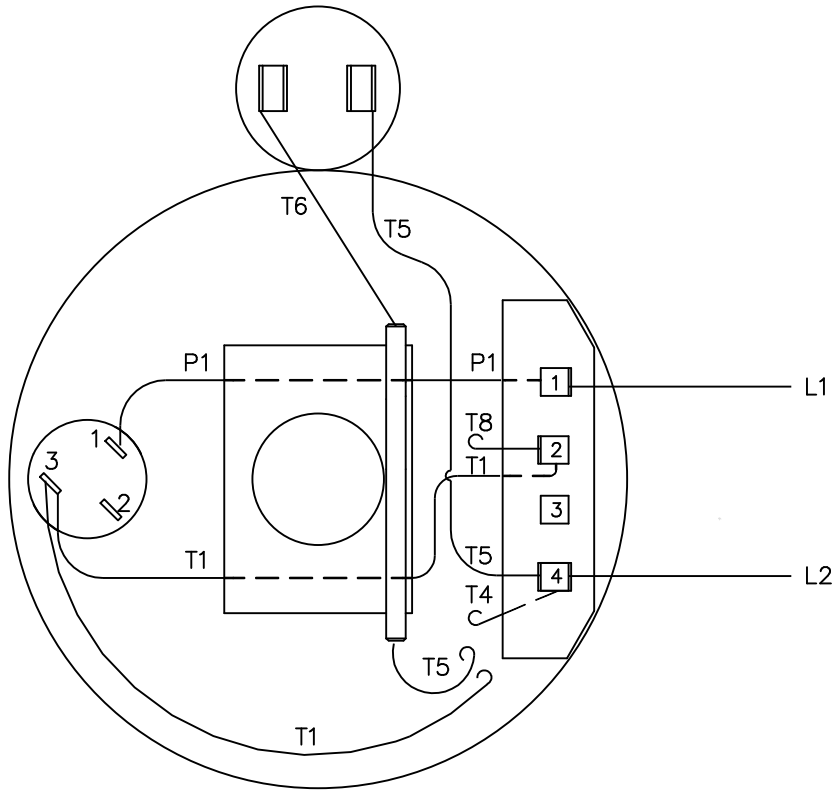


MAXIMUM FACE RUNOUT TO BE .004 T.I.R.
 MAXIMUM PILOT ECCENTRICITY .004 T.I.R.
 PERMISSIBLE SHAFT RUNOUT .002 T.I.R.

DASH NO.	"C"	"AD"	CAP. DASH	"XO"
650	11.34	5.88	A	1.48
700	11.84	6.38	B	1.95
750	12.34	6.88	C	2.19
800	12.84	7.38		
850	13.34	7.88		
900	13.84	8.38		

		TOLERANCES UNLESS SPECIFIED		LEESON ELECTRIC MOTORS GEARMOTORS AND DRIVES		DRAWN	RDW 8/29/05	
		DEC.	INCHES			CHK		
		.X	±.1			APPD	SW 8/29/05	
		.XX	±.03	TITLE		SCALE	1=2	
		.XXX	±.005	OUTLINE- 56HC FRAME		REF	028709	
		.XXXX	±.0005	DRIP PROOF - RIGID "C"		FMF		
01	ADDED MYLAR NAMEPLATE AS PER ECR-0151946	DS	04/24/18	SN		PREV		
NO.	REVISION	BY & DATE	CHK	ANG	FINISH			
			RFP	8/29/05	CAD FILE	028717	SIZE	
THIS DRAWING IN DESIGN AND DETAIL IS OUR PROPERTY AND MUST NOT BE USED EXCEPT IN CONNECTION WITH OUR WORK ALL RIGHTS OF DESIGN AND INVENTION ARE RESERVED THIS IS AN ELECTRONICALLY GENERATED DOCUMENT - DO NOT SCALE THIS PRINT						DIST	DRAWING NO.	REV.
						B	028717	

VIEW FROM OUTSIDE OF MOTOR AT SWITCH END.



				TOLERANCES UNLESS OTHERWISE SPECIFIED		LEESON ELECTRIC CORPORATION		
				DECIMALS				
				.00	± .01	DRAWN WLW 06/24/77	TITLE	
				.000	± .005	CH'K'D. TEM	EXTERNAL WIRING DIAGRAM	
03	REDRAWN ON CAD	DBT	06/16/97	.0000	± .0005	APPR. 06/29/77	TYPE "C" W/ PROTECTOR	
NO.	REVISION	BY	DATE	FRACTIONS	± 1/64	SCALE 1=1	MAT'L. DECAL - 004112	
THIS DRAWING IN DESIGN AND DETAIL IS OUR PROPERTY AND MUST NOT BE USED EXCEPT IN CONNECTION WITH OUR WORK ALL RIGHTS OF DESIGN AND INVENTION ARE RESERVED				ANGLES	± 1/2°	REF. C4G	FINISH	
				INCH/MM		FMF A4C17DR20	SIZE A	DRAWING NO. 005028-03

