

# PRODUCT INFORMATION PACKET



Model No: CZ6T34TC1D

Catalog No: 117126.00

..1/2HP..3450RPM.56.TENV.208-230/460V.3PH.60HZ.CONT.40C.1.15SF.C  
FACE.CZ6T34TC1.....EXTREME DUCK.NOT.....

Encapsulated



Regal and Leeson are trademarks of Regal Beloit Corporation or one of its affiliated companies.

©2018 Regal Beloit Corporation, All Rights Reserved. MC017097E





## Nameplate Specifications

Output HP	<b>0.50 Hp</b>	Output KW	<b>0.37 kW</b>
Frequency	<b>60 Hz</b>	Voltage	<b>208-230/460 V</b>
Current	<b>1.7-1.6/0.80 A</b>	Speed	<b>3450 rpm</b>
Service Factor	<b>1.15</b>	Phase	<b>3</b>
Efficiency	<b>82.5 %</b>	Duty	<b>Continuous</b>
Insulation Class	<b>F</b>	Design Code	<b>B</b>
KVA Code	<b>M</b>	Frame	<b>56C</b>
Enclosure	<b>Totally Enclosed Non Ventilated</b>	Overload Protector	<b>No</b>
Ambient Temperature	<b>40 °C</b>	Drive End Bearing Size	<b>6205</b>
Opp Drive End Bearing Size	<b>6205</b>	UL	<b>Recognized</b>
CSA	<b>Y</b>	CE	<b>Y</b>
IP Code	<b>69</b>		

## Technical Specifications

Electrical Type	<b>Squirrel Cage Induction Run</b>	Starting Method	<b>Across The Line</b>
Poles	<b>2</b>	Rotation	<b>Reversible</b>
Mounting	<b>Round</b>	Motor Orientation	<b>HORIZONTAL</b>
Drive End Bearing	<b>BALL</b>	Opp Drive End Bearing	<b>BALL</b>
Frame Material	<b>Rolled Steel</b>	Shaft Type	<b>NEMA 56</b>
Overall Length	<b>10.47 in</b>	Frame Length	<b>5.25 in</b>
Shaft Diameter	<b>0.625 in</b>	Shaft Extension	<b>1.88 in</b>
Assembly/Box Mounting	<b>F1 ONLY</b>		
Outline Drawing	<b>028768-525</b>	Connection Diagram	<b>005010.52</b>

4

3

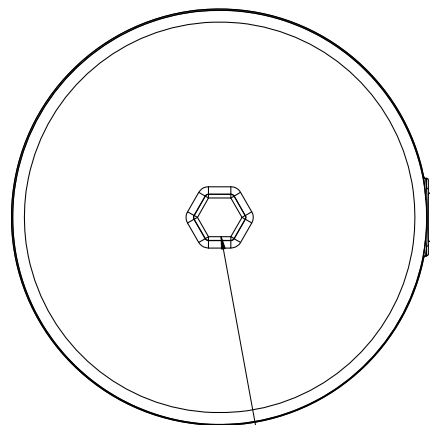
Uncontrolled Copy

2

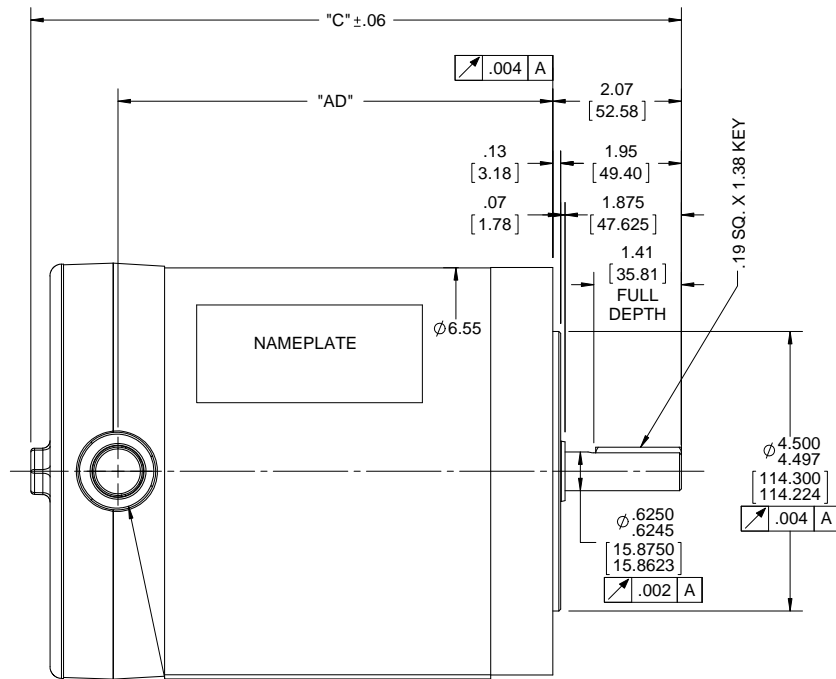
1

B

B

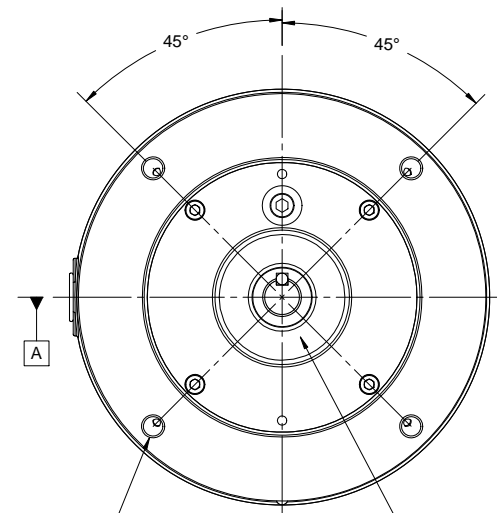


3/4" HEX DRIVER  
FOR COVER  
REMOVAL



1/2-14 NPT CONDUIT  
HOLE

DASH NO.	"C"	"AD"
525	10.47	7.00
550	10.72	7.25
575	10.97	7.50
600	11.22	7.75
625	11.47	8.00
650	11.72	8.25
675	11.97	8.50
700	12.22	8.75
800	13.22	9.75



(4) 3/8-16 UNC-2B X .56  
DEEP ON A Ø5.875 B.C.

SHAFT  
SEAL

A

A

DRAWING REVISION C	REVISION BY AS	DATE 06/01/2017
ECO ECO-0119080	APPROVED BY JD	DATE 06/01/2017
ECO DESCRIPTION ADDED ITEM #800		
<small>COPYRIGHT REGAL BELOIT AMERICA, INC. ALL RIGHTS RESERVED. PROPRIETARY AND CONFIDENTIAL INFORMATION - THIS DOCUMENT IS THE PROPERTY OF REGAL BELOIT AMERICA, INC. (OWNER) AND CONTAINS OWNER'S PROPRIETARY INFORMATION. ANY PERSON, CORPORATION OR OTHER FIRM RECEIVING IT IS DEEMED, BY RECEIVING IT, TO AGREE THAT IT, AND/OR ANY PART OF IT, SHALL NOT BE DISCLOSED TO ANY PERSON, CORPORATION OR OTHER ENTITY, DUPLICATED, AND/OR USED, EXCEPT AS EXPRESSLY APPROVED IN WRITING IN ADVANCE BY OWNER. THIS DOCUMENT SHALL BE RETURNED TO OWNER UPON REQUEST. IT MAY BE SUBJECT TO CERTAIN RESTRICTIONS UNDER APPLICABLE EXPORT CONTROL LAWS AND REGULATIONS.</small>		

TOLERANCES UNLESS  
OTHERWISE SPECIFIED:

DEC.	INCH	mm
X	±0.1	[±2.5]
XX	±0.03	[±0.76]
XXX	±0.005	[±0.127]
XXXX	±0.0005	[±0.0127]

REMOVE BURRS & BREAK SHARP  
EDGES: .003/.015 [.076/.381] X 45°  
CORNER FILLETS: R.02 [.51]  
MACHINED SURFACES: 200 5.1  
INCH mm  
mm SHOWN IN [BRACKETS]

DRAWN BY  
LST 9/4/09

DATE

APPROVED BY

DATE

REFERENCE

THIRD ANGLE  
PROJECTION

Regal Beloit America, Inc.	
DESCRIPTION	OUTLINE TENV "C" FACE
MATERIAL	PROCESS/FINISH
SIZE B	DRAWING NUMBER 028768
SHEET 1 OF 1	

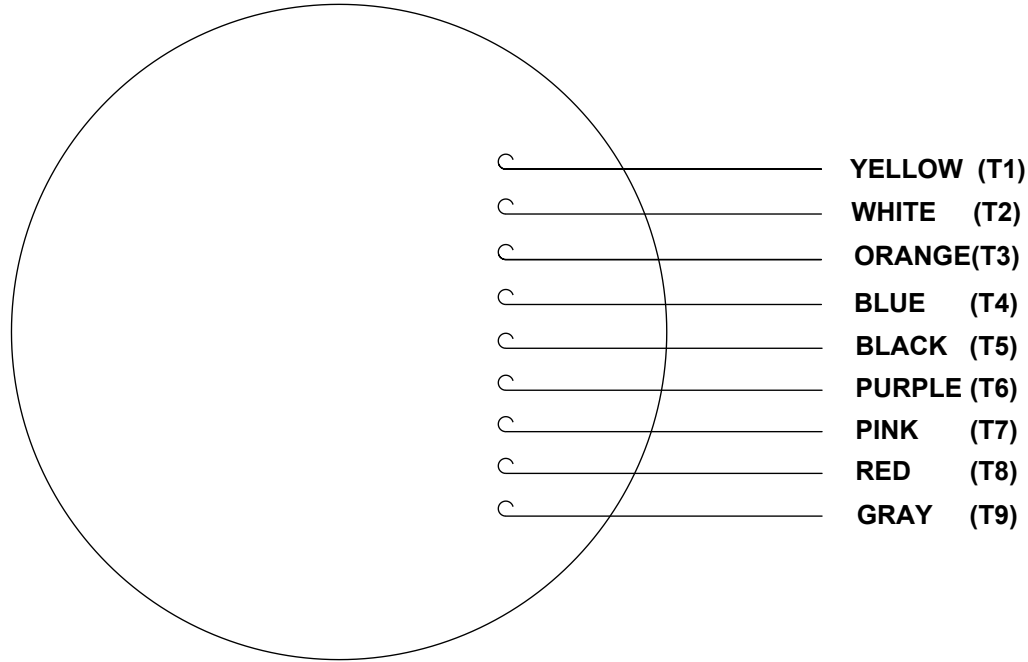
4

3

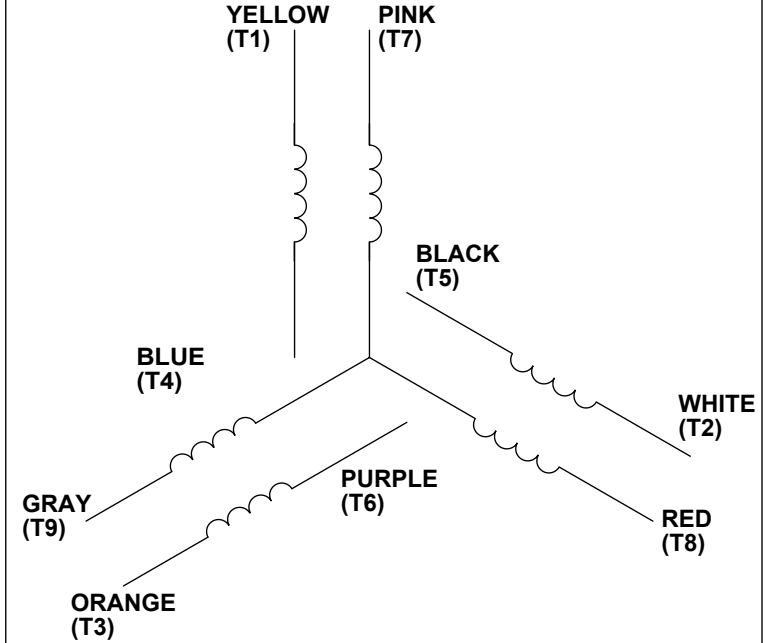
2

1

VIEW FROM OUTSIDE OF MOTOR AT SWITCH END.




## LINE LEADS



VOLTAGE	L1	L2	L3	JOIN & INSULATE
HIGH	T1	T2	T3	(T4,T7) (T5,T8) (T6,T9)
LOW	T1,T7	T2,T8	T3,T9	T4,T5,T6

## RBC PROPRIETARY AND CONFIDENTIAL INFORMATION

This document is the property of REGAL BELOIT CORPORATION ("RBC") including its subsidiaries and divisions and contains proprietary information of RBC. This document is loaned on the express condition that neither it nor the information contained therein shall be disclosed to others without the express written consent of RBC, and that the information shall be used by the recipient only as approved expressly by RBC. This document shall be returned to RBC upon its request. This document may be subject to certain restrictions under U.S. export control laws and regulations.

DRAWING REVISION C	REVISION BY PVR	DATE 04/23/14	TOLERANCES UNLESS OTHERWISE SPECIFIED: <div>DEC. INCH mm ANGLE</div> <div>.X ±0.1 [±2.5] ±0.5°</div> <div>.XX ±0.01 [±0.25]</div> <div>XXX ±0.005 [±0.127]</div> <div>.XXXX ±0.0005 [±0.0127]</div> <div>REMOVE BURRS &amp; BREAK SHARP</div> <div>EDGES: .003/.015 [.076/.381]</div> <div>CORNER FILLETS: .02 [.51]</div> <div>MACHINED SURFACES: 125/3.2/INCH mm</div> <div>mm SHOWN IN [BRACKETS]</div>	DRAWN BY LST	<div>REGAL<sup>TM</sup> Regal Beloit America, Inc.</div>			
ECO ECO-0049985	APPROVED BY JD	DATE 04/23/14		DATE 4/3/14	DESCRIPTION			
ECO DESCRIPTION UPDATED PER ECO-0049985				APPROVED BY	LEAD ASSY EXT. WIRING DIA. 3 PH. W/O PROT.			
<p>COPYRIGHT REGAL BELOIT AMERICA, INC. ALL RIGHTS RESERVED. PROPRIETARY AND CONFIDENTIAL INFORMATION - THIS DOCUMENT IS THE PROPERTY OF REGAL BELOIT AMERICA, INC. ("OWNER") AND CONTAINS OWNER'S PROPRIETARY INFORMATION. ANY PERSON, CORPORATION OR OTHER FIRM RECEIVING IT IS DEEMED, BY RECEIVING IT, TO AGREE THAT IT, AND/OR ANY PART OF IT, SHALL NOT BE DISCLOSED TO ANY PERSON, CORPORATION OR OTHER ENTITY, DUPLICATED, AND/OR USED, EXCEPT AS EXPRESSLY APPROVED IN WRITING IN ADVANCE BY OWNER. THIS DOCUMENT SHALL BE RETURNED TO OWNER UPON REQUEST. IT MAY BE SUBJECT TO CERTAIN RESTRICTIONS UNDER APPLICABLE EXPORT CONTROL LAWS AND REGULATIONS.</p>				DATE	MATERIAL			
				PROCESS/FINISH				
			THIRD ANGLE PROJECTION		SIZE A	DRAWING NUMBER 00501052	SHEET 1 OF 1	

Data Sheet

Date: 1/23/2018

117126.00



Data @ 460 V

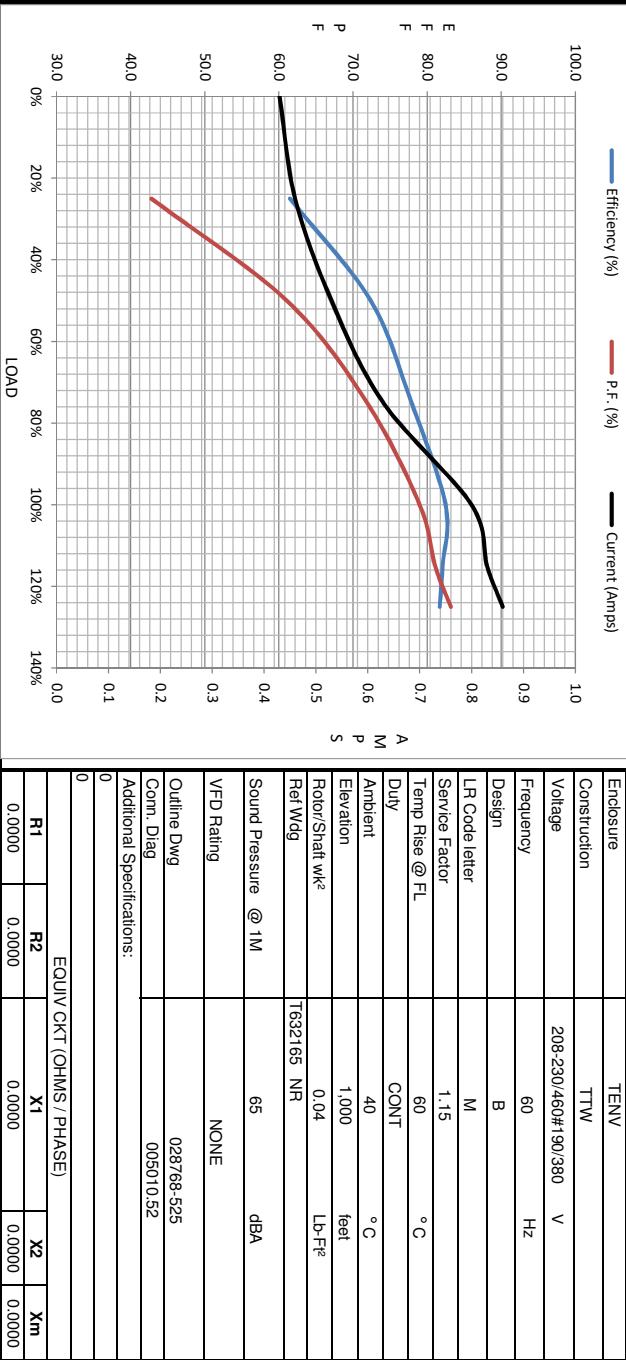
Motor Load Data

Load	0%	25%	50%	75%	100%	115%	125%	LR
Current (Amps)	0.43	0.46	0.53	0.63	0.80	0.83	0.86	
Torque (ft-lb)	0.00	0.19	0.37	0.56	0.75	0.85	0.94	7.0
RPM	3600	3576	3556	3535	3510	3502	3489	2.53
Efficiency (%)		61.5	72.4	77.9	82.5	82.1	81.7	0
P.F. (%)	24.5	42.8	61.1	71.9	79.0	81.1	83.2	0.0

Motor Speed Data

	LR	Pull-Up	BD	Rated	Idle
Speed (RPM)	0	400	2700	3510	3600
Current (Amps)	7.0	6.4	4.2	0.80	0.43
Torque (ft-lb)	2.53	2.30	3.6	0.75	0.00

Information Block	
HP	0.5
Sync. RPM	3600



Speed -Torque Curve

