

PRODUCT INFORMATION PACKET



Model No: 117269.00
Catalog No: 117269.00
0.50 HP Washdown Motor, 3 phase, 3600 RPM, 208-230/460 V, 56HC Frame, TENV
3 Phase Motors



Regal and Leeson are trademarks of Regal Beloit Corporation or one of its affiliated companies.
©2020 Regal Beloit Corporation, All Rights Reserved. MC017097E





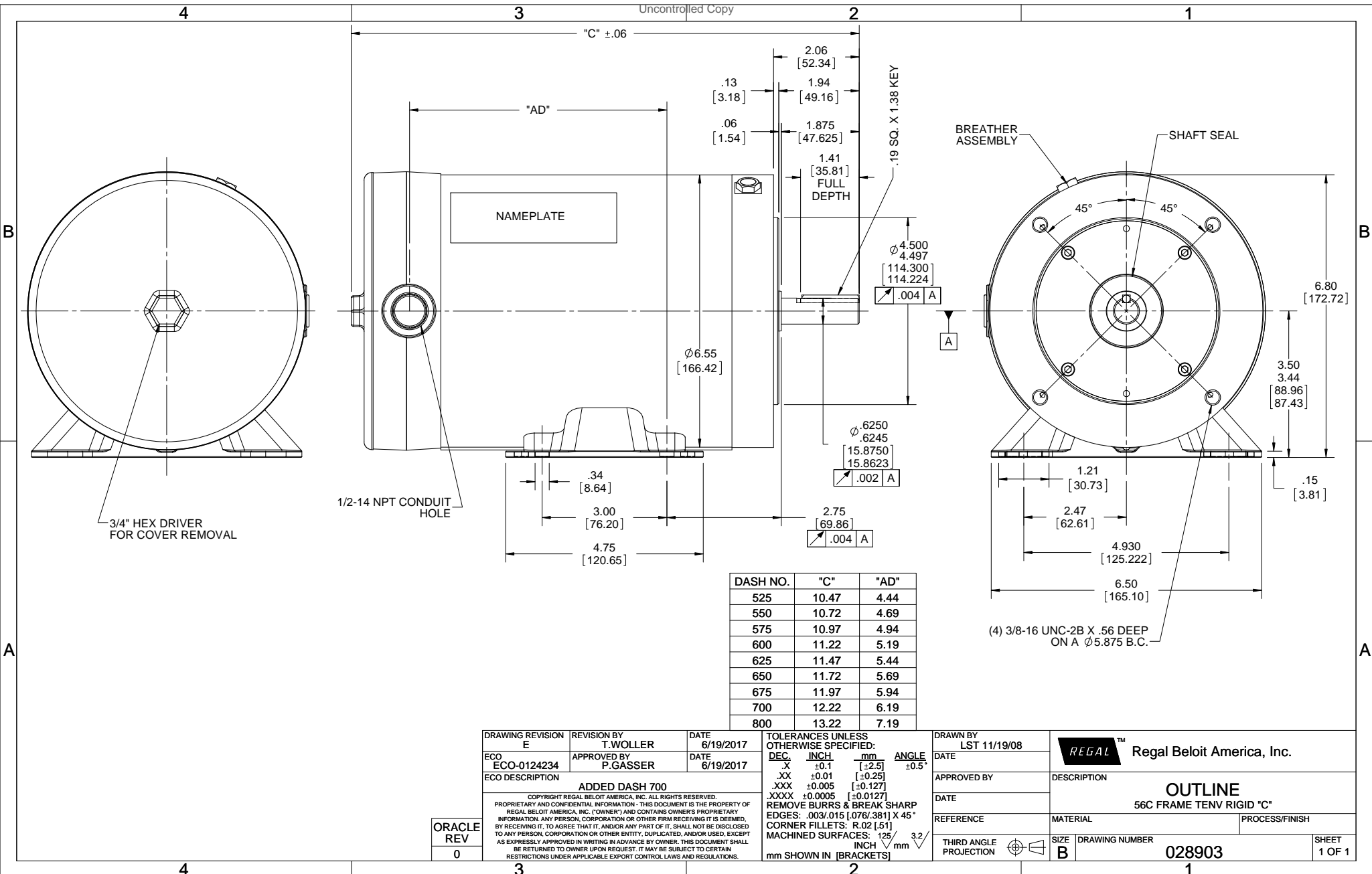
Nameplate Specifications

Output HP	0.50 Hp	Output KW	0.37 kW
Frequency	60 Hz	Voltage	208-230/460 V
Current	1.7-1.6/0.80 A	Speed	3450 rpm
Service Factor	1.15	Phase	3
Efficiency	82.5 %	Power Factor	79
Duty	Continuous	Insulation Class	F
Design Code	B	KVA Code	M
Frame	56HC	Enclosure	Totally Enclosed Non Ventilated
Thermal Protection	No	Ambient Temperature	40 °C
Drive End Bearing Size	6205	Opp Drive End Bearing Size	6205
UL	Recognized	CSA	Y
CE	Y	IP Code	56

Technical Specifications

Electrical Type	Squirrel Cage Inverter Rated	Starting Method	Line Or Inverter
Poles	2	Rotation	Reversible
Resistance Main	31.2 Ohms	Mounting	Rigid base
Motor Orientation	Horizontal	Drive End Bearing	Ball
Opp Drive End Bearing	Ball	Frame Material	Stainless Steel
Shaft Type	NEMA 56	Overall Length	10.47 in
Frame Length	5.25 in	Shaft Diameter	0.625 in
Shaft Extension	1.88 in	Assembly/Box Mounting	F1 ONLY
Outline Drawing	028903-525	Connection Drawing	005010.01

This is an uncontrolled document once printed or downloaded and is subject to change without notice. Date Created:14/10/2020



DRAWING REVISION E	REVISION BY T. WOLLER	DATE 6/19/2017
ECO ECO-0124234	APPROVED BY P. GASSER	DATE 6/19/2017
ECO DESCRIPTION ADDED DASH 700		
<small>COPYRIGHT REGAL BELOIT AMERICA, INC. ALL RIGHTS RESERVED. PROPRIETARY AND CONFIDENTIAL INFORMATION - THIS DOCUMENT IS THE PROPERTY OF REGAL BELOIT AMERICA, INC. (OWNER) AND CONTAINS OWNER'S PROPRIETARY INFORMATION. ANY PERSON, CORPORATION OR OTHER FIRM RECEIVING IT IS DEEMED, BY RECEIVING IT, TO AGREE THAT IT, AND/OR ANY PART OF IT, SHALL NOT BE DISCLOSED TO ANY PERSON, CORPORATION OR OTHER ENTITY, DUPLICATED, AND/OR USED, EXCEPT AS EXPRESSLY APPROVED IN WRITING IN ADVANCE BY OWNER. THIS DOCUMENT SHALL BE RETURNED TO OWNER UPON REQUEST. IT MAY BE SUBJECT TO CERTAIN RESTRICTIONS UNDER APPLICABLE EXPORT CONTROL LAWS AND REGULATIONS.</small>		
ORACLE REV 0		

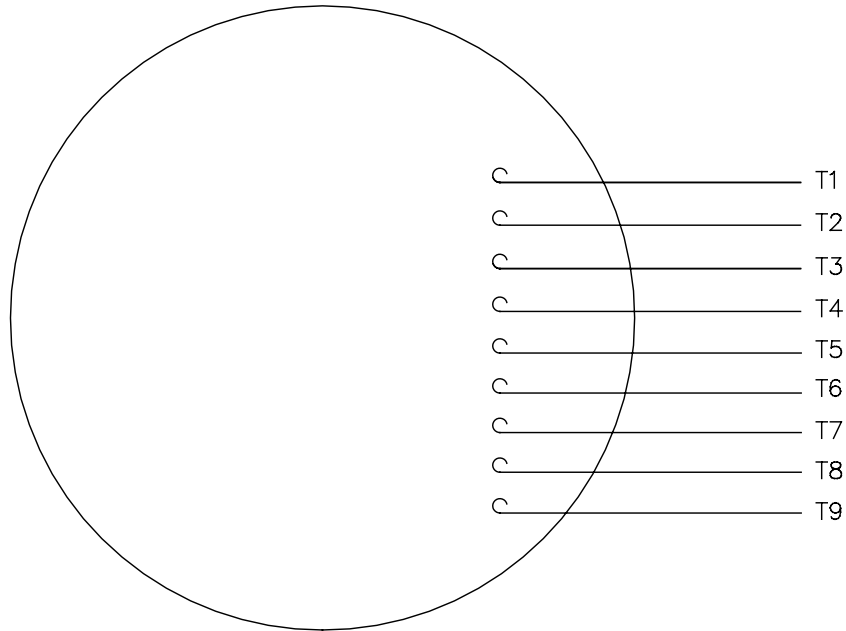
TOLERANCES UNLESS OTHERWISE SPECIFIED:			
DEC.	INCH	mm	ANGLE
X	±0.1	[±2.5]	±0.5°
.XX	±0.01	[±0.25]	
.XXX	±0.005	[±0.127]	
.XXXX	±0.0005	[±0.0127]	
REMOVE BURRS & BREAK SHARP			
EDGES: .003/.015 [076/381] X 45°			
CORNER FILLETS: R.02 [51]			
MACHINED SURFACES: 125/3.2			
mm SHOWN IN [BRACKETS]			

DRAWN BY LST 11/19/08	DATE
APPROVED BY	DATE
REFERENCE	THIRD ANGLE PROJECTION

Regal Beloit America, Inc.	
DESCRIPTION OUTLINE 56C FRAME TENV RIGID "C"	
MATERIAL	PROCESS/FINISH
SIZE B	DRAWING NUMBER 028903
SHEET 1 OF 1	

005010-01

VIEW FROM OUTSIDE OF MOTOR AT SWITCH END.



VOLTAGE	L1	L2	L3	JOIN & INSULATE
HIGH	T1	T2	T3	(T4,T7) (T5,T8) (T6,T9)
LOW	T1,T7	T2,T8	T3,T9	T4,T5,T6

				TOLERANCES UNLESS SPECIFIED		REGAL™ Regal Beloit America, Inc.		DRAWN RDW 04/12/02		
				DEC.	INCHES			CHK		
				.X	±.1			APPD		
				.XX	±.01			SCALE 1=1		
				.XXX	±.005	TITLE		REF FIG.2-51		
A	UPDATED TO REGAL LOGO	SAJ 06/26/15	AJY	.XXXX	±.0005	MAT'L.		FMF		
NO.	REVISION	BY & DATE	CHK	ANG	±1/2"	FINISH		PREV		
THIS DRAWING IN DESIGN AND DETAIL IS OUR PROPERTY AND MUST NOT BE USED EXCEPT IN CONNECTION WITH OUR WORK ALL RIGHTS OF DESIGN AND INVENTION ARE RESERVED THIS IS AN ELECTRONICALLY GENERATED DOCUMENT - DO NOT SCALE THIS PRINT				RFP	04/12/02	CAD FILE		SIZE	DRAWING NO.	REV.
				DIST	BRF-NLV	00501001		A	005010-01	A



P.O. BOX 8003
WAUSAU, WI 54401-8003
PH. 715-675-3311

DATA VOLTS: 460

CERTIFICATION DATA SHEET

CONN. DIAGRAM: 005010.01
OUTLINE: 028903-525
WINDING: T632165

CAT #: 117269.00

NR 3

TYPICAL MOTOR PERFORMANCE DATA

HP	KW	SYNC RPM	FL RPM	FRAME	ENCLOSURE	TYPE	KVA CODE	DESIGN					
0.5	0.37	3600	3510	56HC	TENV	TTW	M	B					
PH	HZ	VOLTS	AMPS	START TYPE	DUTY	INSL	S.F.	AMB	ELEV.				
3	60/50	208-230/460#190/380	1.7-1.45/72&1.8/1.9	LINE OR INVERTER	CONT	F	1.15	40	3300				
F.L. EFF		82.5	3/4 LD EFF	77.9	1/2 LD EFF	72.4	GTD EFF	ELECT. TYPE					
F.L. PF		79.0	3/4 LD PF	71.9	1/2 LD PF	61.1	0.0	SQ CAGE INVERTED					
F.L. TORQUE		LR AMPS @ 460 V		L.R. TORQUE		B.D. TORQUE		F.L. RISE (°C)					
0.75 LB-FT		7.0		2.53 LB-FT		3.6 LB-FT		480%					
PRESSURE @ 3		POWER		ROTOR WK²		MAX. LOAD WK²		SAFE STALL TIME		STARTS/HOUR		MOTOR WGT	
65 DBA		74 DBA		0.04 LB-FT²		0 LB-FT²		0 SEC.		0		0 LB.	

***** SUPPLEMENTAL INFORMATION *****

DE BRACKET TYPE	ODE BRACKET TYPE	MOUNT TYPE	MOTOR ORIENTATION	SEVERE DUTY	HAZARDOUS LOCATION	DRIIP COVER	SCREENS	PAINT	
C-FACE	STANDARD	RIGID	HORIZONTAL	NO	NONE	NO	NONE	NO PAINT	
BEARINGS		SHAFT TYPE		SPECIAL DE		SHAFT MATERIAL		FRAME MATERIAL	
DE ODE	GREASE	BALL BALL	STANDARD 56	NONE		303 STAINLESS (C-501)		STAINLESS STEEL	
6205									
6205									
THERMOSTATS		WIDG RTD's		BRG RTD's		THERMISTORS		SPACE HEATERS	
NONE		NOT		NONE		NONE		NA	
R1 (ohms/ph)	R2 (ohms/ph)	X1 (ohms/ph)	X2 (ohms/ph)	Xm (ohms/ph)	VIBRATION (in/sec)	FLOAT ODE			
0	0	0	0	0	0.080				

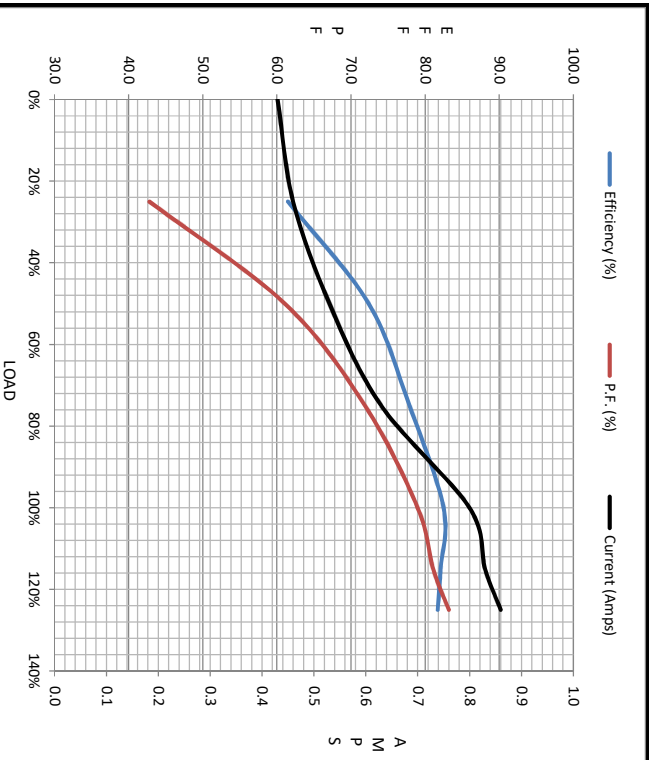
* NOT TESTED		INVERTER TORQUE: CONSTANT 6:1	
		INV. HP SPEED RANGE: NONE	
ENCODER: NONE			
BRAKE: NONE			
FT-LB: NA			
VOLTAGE: NONE			
UL: Y-(LEESON UL REC)			

DATE: 1/23/2018	



Motor Load Data									
Load	0%	25%	50%	75%	100%	115%	125%	LR	
Current (Amps)	0.43	0.46	0.53	0.63	0.80	0.83	0.86	7.0	
Torque (ft-lb)	0.00	0.19	0.37	0.56	0.75	0.85	0.94	2.53	
RPM	3600	3576	3556	3535	3510	3502	3489	0	
Efficiency (%)		61.5	72.4	77.9	82.5	82.1	81.7		
P.F. (%)	24.5	42.8	61.1	71.9	79.0	81.1	83.2	0.0	

Motor Speed Data						Information Block																										
LR	Pull-Up	BD	Rated	Idle		HP	Sync. RPM	Frame	Enclosure	Construction	Voltage	Frequency	Design	LR Code letter	Service Factor	Temp Rise @ FL	Duty	Ambient	Elevation	Rotor/Shaft wk ²	Ref Wdg	Sound Pressure @ 1M	VFD Rating	Outline Dwg	Conn. Diag	Additional Specifications:	EQUIV CKT (OHMS / PHASE)	R1	R2	X1	X2	Xm
0	400	2700	3510	3600		0.5	3600	140	TENV	TTW	208-230/460#190/380	60	B	M	1.15	60	CONT	40 °C	1,000	0.04	LB-Fc	65	CONSTANT 6:1	028903-525	005010.01		0.0000	0.0000	0.0000	0.0000	0.0000	



LR	Pull-Up	BD	Rated	Idle
0	400	2700	3510	3600
Current (Amps)	7.0	6.4	4.2	0.80
Torque (ft-lb)	2.53	2.30	3.6	0.75

