

PRODUCT INFORMATION PACKET



Model No: 117860.00

Catalog No: 117860.00

0.33 HP Explosion Proof Motor, 3 phase, 1800 RPM, 208-230/460 V, 56C Frame, EPNV
Explosion Proof NEMA Motors



Regal and Leeson are trademarks of Regal Beloit Corporation or one of its affiliated companies.
©2020 Regal Beloit Corporation, All Rights Reserved. MC017097E

The Regal logo is located in the bottom right corner. It features the word "REGAL" in a white, sans-serif font, set against a dark grey, trapezoidal background. The background of the entire page on the right side is a blue gradient with a halftone dot pattern.

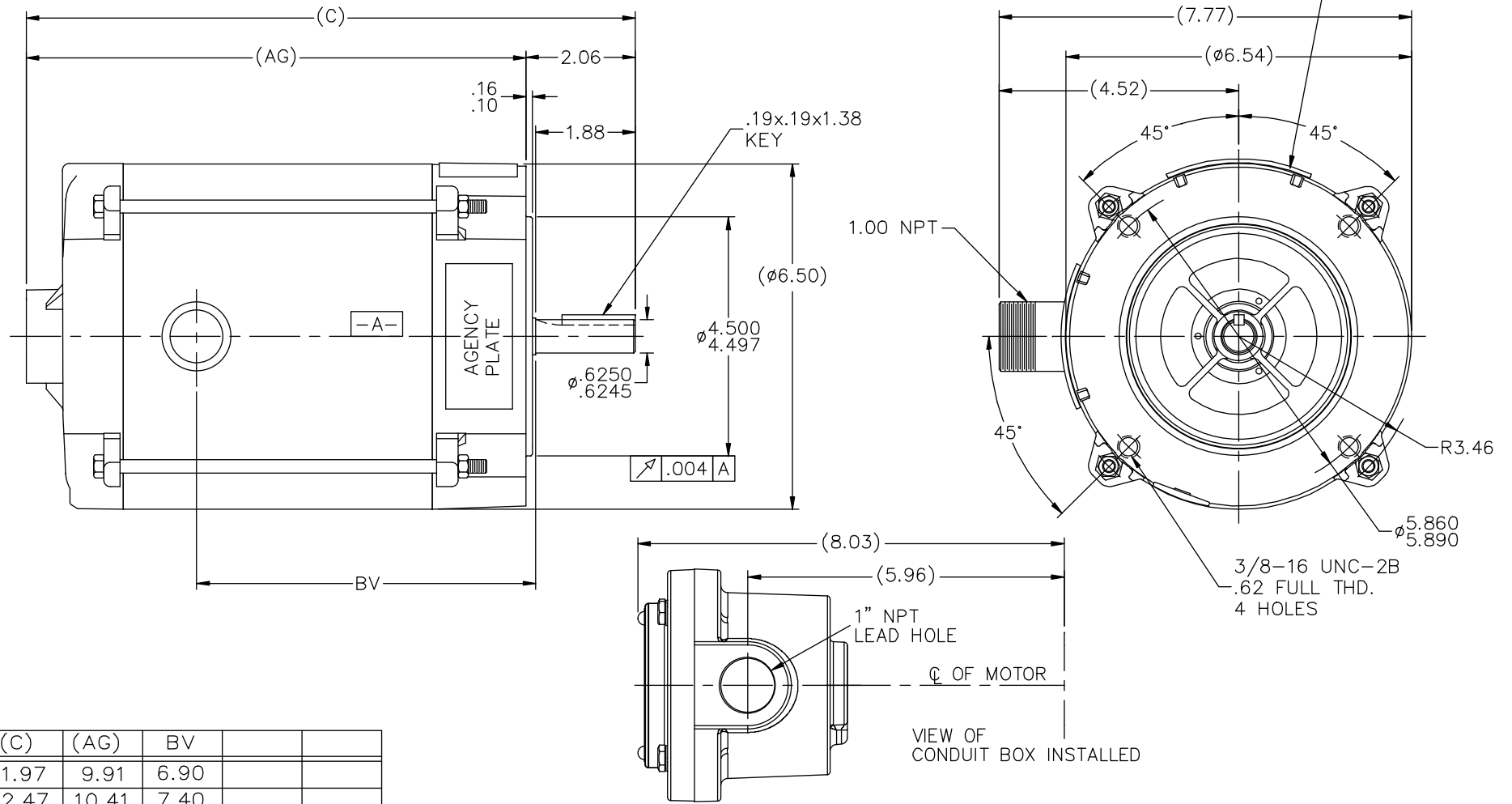


Nameplate Specifications

Output HP	0.33 Hp	Output KW	0.25 kW
Frequency	60 Hz	Voltage	208-230/460 V
Current	1.2-1.2/0.60 A	Speed	1725 rpm
Service Factor	1	Phase	3
Efficiency	74.5 %	Power Factor	71
Duty	Continuous	Insulation Class	B
Design Code	B	KVA Code	K
Frame	56C	Enclosure	Explosion Proof Non Ventilated
Thermal Protection	Thermostats (N/C)	Ambient Temperature	40 °C
Drive End Bearing Size	6203	Opp Drive End Bearing Size	6203
UL	UL Listed And CSA Certified	CSA	Y
CE	N	IP Code	54
Hazardous Location	EXP PROOF CL I GR C&D CL II GR F&G T3C		

Technical Specifications

Electrical Type	Squirrel Cage Inverter Rated	Starting Method	Line Or Inverter
Poles	4	Rotation	Reversible
Resistance Main	63.7 Ohms	Mounting	Round
Motor Orientation	Horizontal	Drive End Bearing	Ball
Opp Drive End Bearing	Ball	Frame Material	Rolled Steel
Shaft Type	NEMA 56	Overall Length	11.97 in
Frame Length	6.31 in	Shaft Diameter	0.625 in
Shaft Extension	1.88 in	Assembly/Box Mounting	F1 ONLY
Outline Drawing	B-104197LE-631	Connection Drawing	A-EE7308T-LE

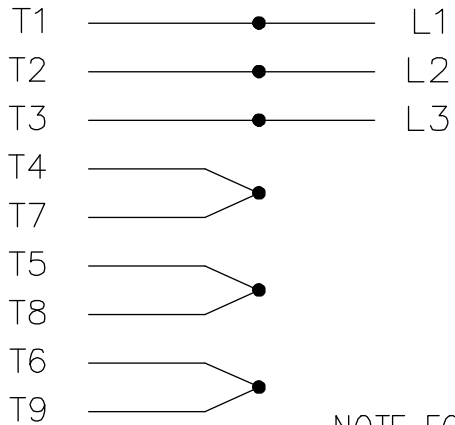


DASH	(C)	(AG)	BV
631	11.97	9.91	6.90
681	12.47	10.41	7.40
731	12.97	10.91	7.90
781	13.47	11.41	8.40
831	13.97	11.91	8.90
881	14.47	12.41	9.40
931	14.97	12.91	9.90
981	15.47	13.41	10.40

				TOLERANCES UNLESS SPECIFIED		LEESON	ELECTRIC MOTORS GEARMOTORS AND DRIVES	DRAWN RJW 06-22-2007			
				DEC.	INCHES			CHK	ML	06-22-2007	
				.X	±.1			APPD	GK	06-22-2007	
				.XX	±.03					SCALE 17=32	
02	COND. BOX INSTALLED VIEW UPDATED PER ECR-0044571	UD	10/15/13	ST	.XXX	±.005	TITLE OUTLINE - 'C' FACE			REF	
01	UPDATED AS PER ECN #21581	NB	8/26/2011	PN	.XXXX	±.0005	56 FR. - EXP. PR.			FMF	
REVISION				BY & DATE	CHK	ANG	±7'30"	FINISH		PREV	
THIS DRAWING IN DESIGN AND DETAIL IS OUR PROPERTY AND MUST NOT BE USED EXCEPT IN CONNECTION WITH OUR WORK ALL RIGHTS OF DESIGN AND INVENTION ARE RESERVED THIS IS AN ELECTRONICALLY GENERATED DOCUMENT - DO NOT SCALE THIS PRINT				RFP	06-22-2007	CAD FILE	104197LE	SIZE	DRAWING NO.	PAGE OF	REV.
				DIST	WP			B	104197LE	02	

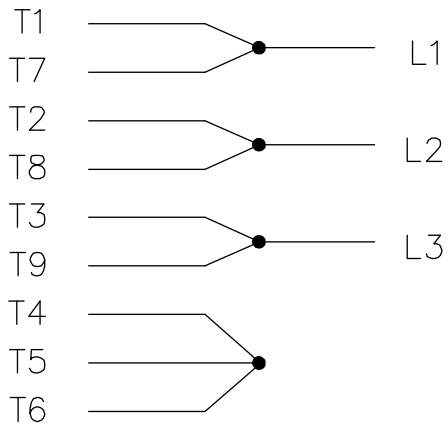
THREE PHASE
DUAL VOLTAGE MOTOR

HIGH VOLTAGE

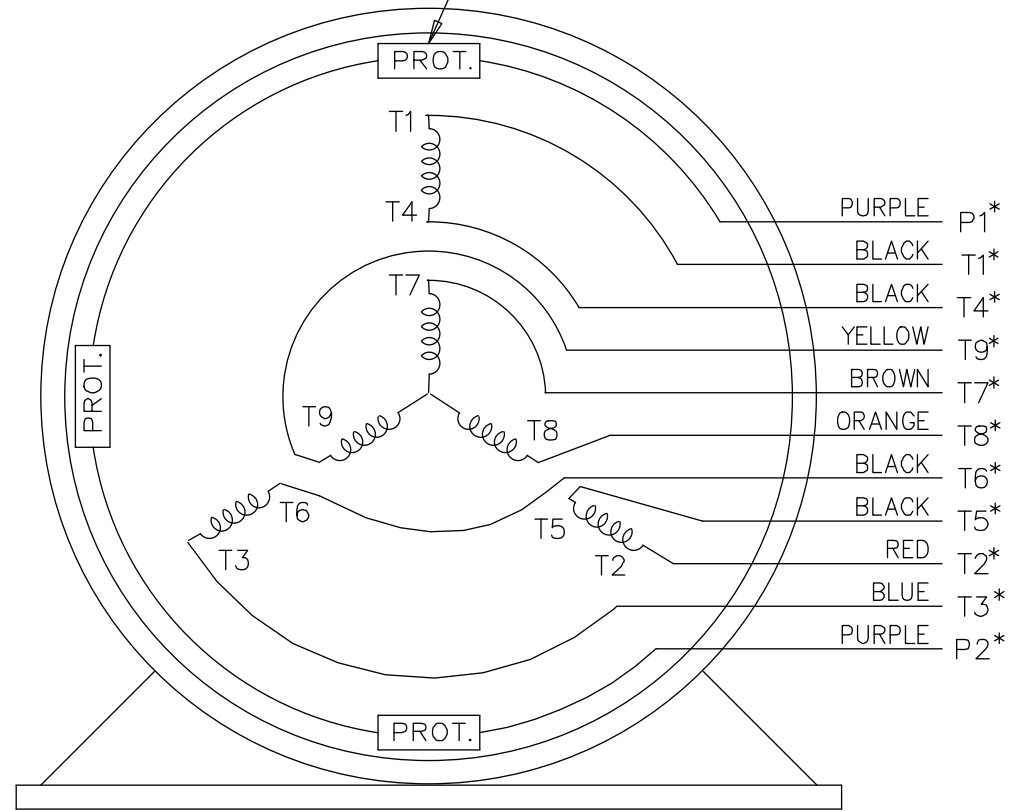


NOTE FOR FACTORY USE ONLY:
 TO SURGE TEST FOR COMMON CONNECT:
 HIGH VOLT: CONNECT P1 TO T1
 THEN P2 TO L1
 LOW VOLT: CONNECT P1 TO T1 & T7,
 THEN P2 TO L1

LOW VOLTAGE



THREMO-PROTECTORS
CONNECTED IN SERIES.



VIEW OF TERMINAL END

* USE LEADS AS PER PLANT STANDARD IRRWSPECTIVE OF THEIR COLOUR.

NO.	REVISION	BY & DATE	CHK	ANG	TOLERANCES UNLESS SPECIFIED		FINISH	DRAWN TJB 05-07-2002				
					DEC.	INCHES						
05	ADDED * NOTE PER ECN # 26921	UD 01-30-2013	JD	DEC.				CHK ML 05-08-2002				
04	ADDED COLORS TO "T & P" LEADS CN 40494	MSG 08-08-2006	ML	.X	±.1			APPD TB 05-08-2002				
03	RE-ISSUE	NJS 04-21-2004	JET	.XX	±.02			SCALE 1=1				
02	REDRAWN	TAT 04-20-2004	ML	.XXX	±.005			REF				
01	NEW DRAWING CN 34708	TJB 05-08-2002	ML	.XXXX	±.0005			FMF				
					±7'30"			PREV				
THIS DRAWING IN DESIGN AND DETAIL IS OUR PROPERTY AND MUST NOT BE USED EXCEPT IN CONNECTION WITH OUR WORK ALL RIGHTS OF DESIGN AND INVENTION ARE RESERVED THIS IS AN ELECTRONICALLY GENERATED DOCUMENT - DO NOT SCALE THIS PRINT							RFP	CAD FILE EE7308T_LE	SIZE A	DRAWING NO. EE7308T-LE	PAGE OF	REV. 05
							DIST LB-WP-LE					



ELECTRIC MOTORS
GEARMOTORS
AND DRIVES

TITLE CONNECTION DIAGRAM
3 PHASE - DUAL VOLTAGE MOTOR



P.O. BOX 8003
WAUSAU, WI 54401-8003
PH. 715-675-3311

DATA VOLTS: 460

CERTIFICATION DATA SHEET

CONN. DIAGRAM: A-EET7308T-LE
OUTLINE: B-104197LE-631
WINDING: ZT493

R6 3

CAT #: 117860.00

TYPICAL MOTOR PERFORMANCE DATA

HP	KW	SYNC RPM	FL RPM	FRAME	ENCLOSURE	TYPE	KVA CODE	DESIGN					
0.33	0.25	1800	1725	56C	EPNV	TTR	K	B					
PH	HZ	VOLTS	AMPS	START TYPE	DUTY	INSL	S.F.	AMB	ELEV.				
3	60/50	208-230/460#190/380	1.2-1.2/68.1/156	ACROSS THE LINE	CONT	B	1.15	40	3300				
	F.L. EFF	74.5	3/4 LD EFF	72.5	1/2 LD EFF	67.5	GTD EFF		ELECT. TYPE				
	F.L. PF	71.0	3/4 LD PF	64.0	1/2 LD PF	52.0	71.5		SO CAGE IND RUN				
	F.L. TORQUE	LR AMPS @ 460 V	L.R. TORQUE	3.0	LB-FT	300%	3.8	LB-FT	F.L. RISE (°C)				
	1.00	LB-FT	3.6						380%				
	35												
	PRESSURE @ 3	POWER	ROTOR WK²	MAX. LOAD WK²	SAFE STALL TIME	STARTS/HOUR	MOTOR WGT						
	60	DBA	69	DBA	0.04	LB-FT²	2	LB-FT²	15	SEC.	2	21	LB.

*** SUPPLEMENTAL INFORMATION ***

DE BRACKET TYPE	ODE BRACKET TYPE	MOUNT TYPE	MOTOR ORIENTATION	SEVERE DUTY	HAZARDOUS LOCATION	DRIIP COVER	SCREENS	PAINT
C-FACE	STANDARD	ROUND	HORIZONTAL	NO	DEF CL I GR C&D CL II GR	NO	NONE	JE - LEESON (ENAM)
BEARINGS	GREASE	SHAFT TYPE	SPECIAL DE	SPECIAL ODE	SHAFT	MATERIAL	FRAME MATERIAL	
DE	ODE	BALL	POLYREX EM	STANDARD 56	NONE	1144 STRESSPROOF (C-223)	ROLLED STEEL	
6203	6203							
THERMOSTATS	PROTECTORS	WDG RTD's	BRG RTD's	THERMISTORS	CONTROL	SPACE HEATERS		
TSTATS (N/C)	NOT	NONE	NONE	NONE	FALSE	NA		
R1 (ohms/ph)	R2 (ohms/ph)	X1 (ohms/ph)	X2 (ohms/ph)	Xm (ohms/ph)	VIBRATION (in/sec)	FLOAT		
34.572	24.08	36.55	24.252	675.96	0.150	ODE		

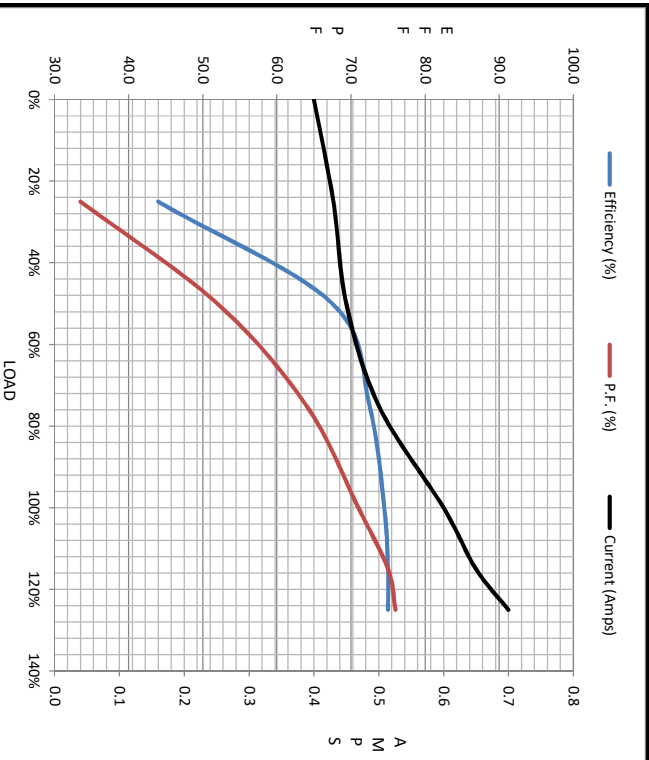
* N O T E S	INVERTER TORQUE: NONE	
	INV. HP SPEED RANGE: NONE	
	ENCODER: NONE	NONE PPR
	NONE	
	NONE	
	NONE	
	BRAKE: NONE	
	NONE	
	FT-LB: NA	NONE
	VOLTAGE: NONE	
	UL: Y-(LEESON UL REC)	

DATE:	1/22/2018	HZ:
-------	-----------	-----



Motor Load Data						
Load	0%	25%	50%	75%	100%	LR
Current (Amps)	0.40	0.43	0.45	0.50	0.60	3.6
Torque (ft-lb)	0.00	0.20	0.50	0.75	1.00	3.0
RPM	1800	1780	1755	1735	1725	0
Efficiency (%)		44.0	67.5	72.5	74.5	
P.F. (%)	21.0	33.5	52.0	64.0	71.0	74.5

Motor Speed Data						Information Block				
Speed (RPM)	LR	Pull-Up	BD	Rated	Idle	HP	Sync. RPM	Frame		
	0	320	1300	1725	1800	0.3	1800	56		
Current (Amps)	3.6	3.5	2.50	0.60	0.40					
Torque (ft-lb)	3.0	2.90	3.8	1.00	0.00					
						Construction	TTR	EPNV		
						Voltage	208-230/460#190/380 V			
						Frequency	60	Hz		
						Design	B			
						LR Code letter	K			
						Service Factor	1.15			
						Temp Rise @ FL	35 °C			
						Duty	CONT			
						Ambient	40	°C		
						Elevation	1,000	feet		
						Rotor/Shaft wk ²	0.04	Lb-Ft ²		
						Ref Wdg	ZT493	R6		
						Sound Pressure @ 1M	60	dB(A)		
						VFD Rating	NONE			
						Outline Dwg	B-104197LE-631			
						Conn. Diag	A-EE7308T-1E			
						Additional Specifications:				
						0				
						EQUIV CKT (OHMS / PHASE)				
						R1	R2	X1	X2	Xm
						34.5720	24.0800	36.5500	24.2920	675.9600



LR	Pull-Up	BD	Rated	Idle
0	320	1300	1725	1800
3.6	3.5	2.50	0.60	0.40
3.0	2.90	3.8	1.00	0.00

