

PRODUCT INFORMATION PACKET



Model No: C284T34FB5D
Catalog No: 170035.00
25 HP 3600 230/460 TEFC 284TS PREM EFF
Totally Enclosed Fan Cooled (TEFC)



Regal and Leeson are trademarks of Regal Beloit Corporation or one of its affiliated companies.
©2019 Regal Beloit Corporation, All Rights Reserved. MC017097E





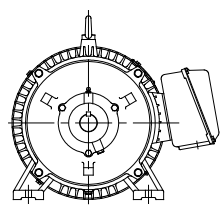
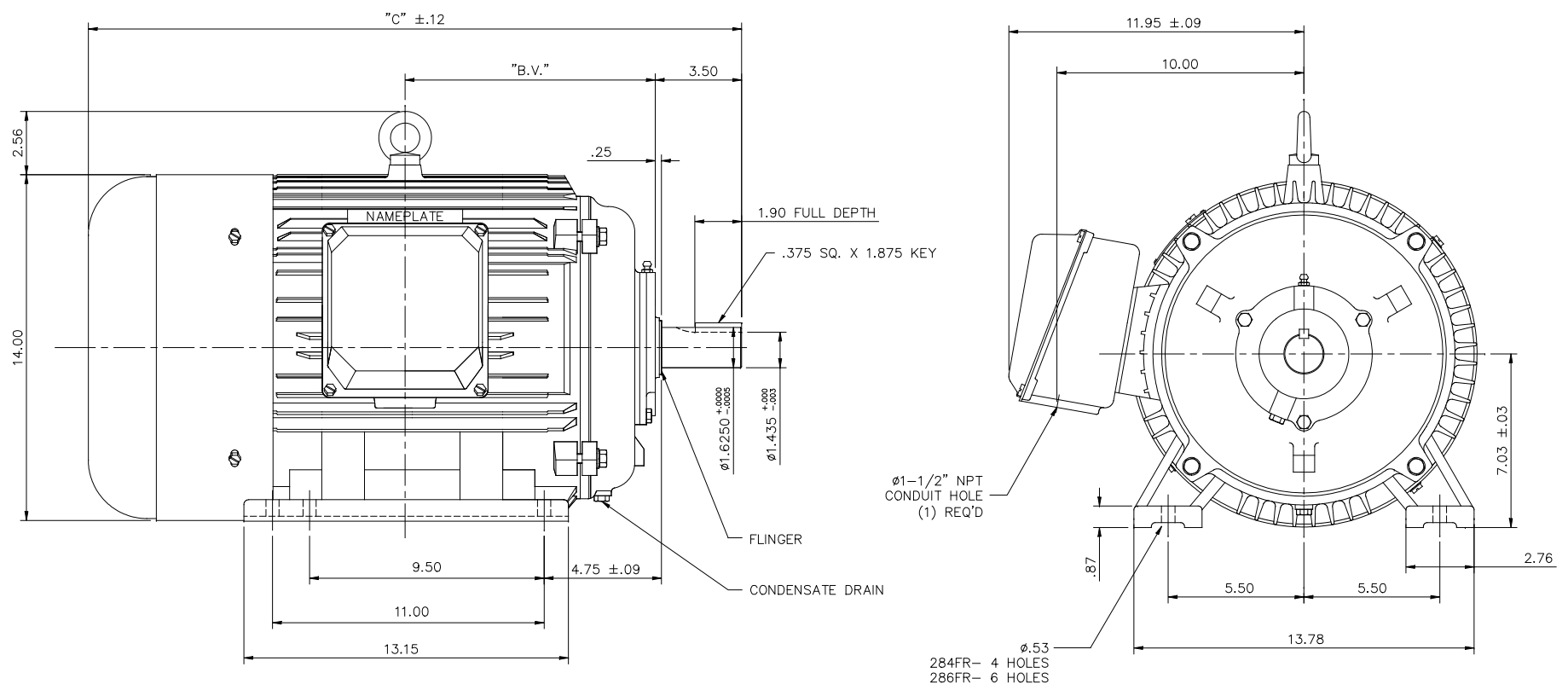
Nameplate Specifications

Output HP	25 Hp	Output KW	18.7 kW
Frequency	60 Hz	Voltage	208-230/460 V
Current	63.0-56.5/28.3 A	Speed	3555 rpm
Service Factor	1.15	Phase	3
Efficiency	93 %	Duty	Continuous
Insulation Class	F	Design Code	B
KVA Code	G	Frame	284TS
Enclosure	Totally Enclosed Fan Cooled	Overload Protector	No
Ambient Temperature	40 °C	Drive End Bearing Size	6311
Opp Drive End Bearing Size	6309	UL	Recognized
CSA	Y	CE	Y
IP Code	43		

Technical Specifications

Electrical Type	Squirrel Cage Induction Run	Starting Method	Wye Start Delta Run
Poles	2	Rotation	Reversible
Mounting	Rigid base	Motor Orientation	Horizontal
Drive End Bearing	Ball	Opp Drive End Bearing	Ball
Frame Material	Cast Iron	Shaft Type	TS
Overall Length	24.88 in	Shaft Diameter	1.625 in
Shaft Extension	3.25 in	Assembly/Box Mounting	F1/F2 CAPABLE
Outline Drawing	16954060	Connection Diagram	004172.03

This is an uncontrolled document once printed or downloaded and is subject to change without notice. Date Created: 02/14/2019



FRAME DESIGN	"C"	"BV"
284TS	24.88	4.72
286TS	26.46	3.97

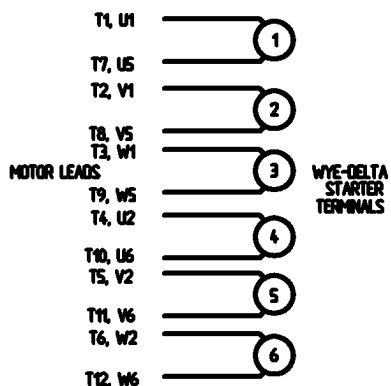
NO.	REVISION	BY & DATE	CHK	ANG	TOLERANCES UNLESS SPECIFIED		FINISH	CAD FILE 16954060	SIZE B	DRAWING NO. 169540-60	PAGE OF	REV. H
					DEC.	INCHES						
H	ADDED F2 VIEW ECO-0134445	WGJ 11/10/2017	EMH	X	±.1							
03	REMOVED REFERENCE TO 250 FRAME	MOL 08/15/2012		.XX	±.03		TITLE OUTLINE-280TS FRAME, TEFC-RIGID					
02	REDRAWN TO CURRENT CAD STANDARDS	CJK 11/1/01		.XXX	±.005		NEW CONDUIT BOX					
01	ADDED HOLES 286TS BASE	JJK 07/13/99		.XXXX	±.0005		MATL. CAST IRON					



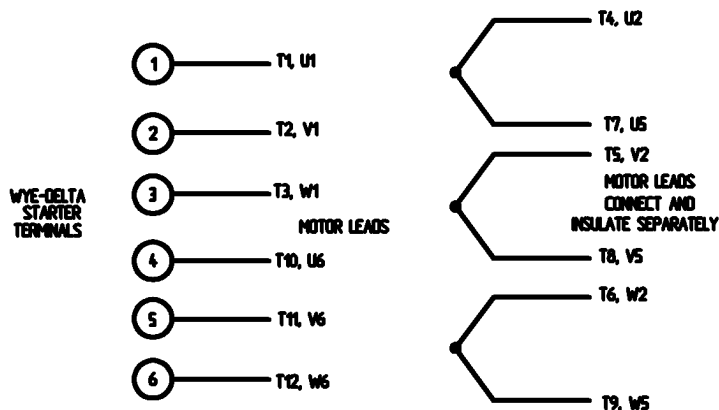
THIS DRAWING IN DESIGN AND DETAIL IS OUR PROPERTY AND MUST NOT BE USED EXCEPT IN CONNECTION WITH OUR WORK. ALL RIGHTS OF DESIGN AND INVENTION ARE RESERVED. THIS IS AN ELECTRONICALLY GENERATED DOCUMENT - DO NOT SCALE THIS PRINT.

WYE - DELTA STARTING USEABLE ON 2,4 AND 6 POLE MOTORS.

LOW VOLTAGE CONNECTION

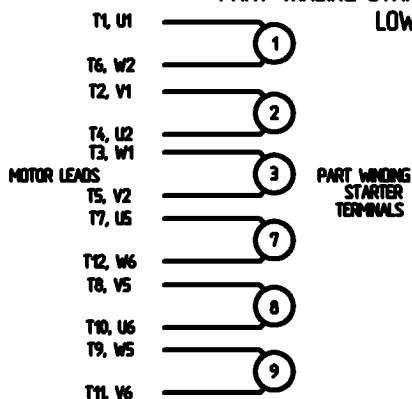


HIGH VOLTAGE CONNECTION



REFER TO THE WYE-DELTA STARTER CONNECTION INSTRUCTIONS FOR PROPER CONNECTION OF POWER LINES TO STARTER.

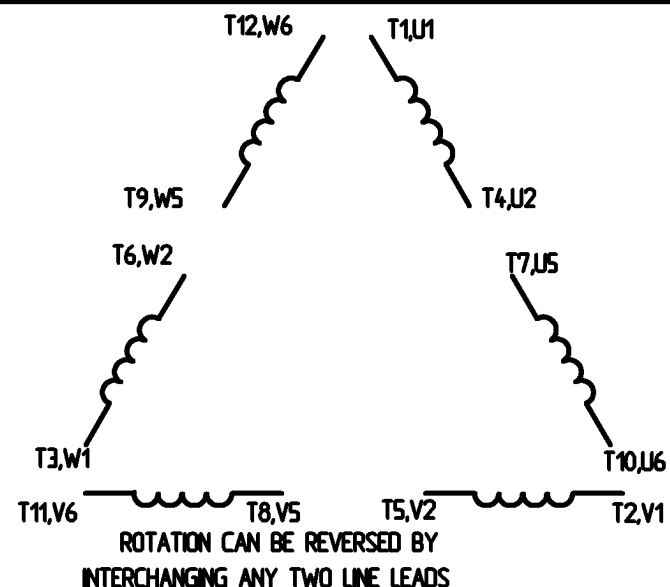
PART WINDING START USABLE ON 4 & 6 POLE MOTORS
LOW VOLTAGE CONNECTION ONLY



REFER TO THE PART WINDING STARTER INSTRUCTIONS FOR PROPER CONNECTION OF POWER LINES TO STARTER.

REFER TO THE CUTLER - HAMMER OR EQUIV. FOR PROPER SELECTION OF OVERLOAD HEATER COILS.

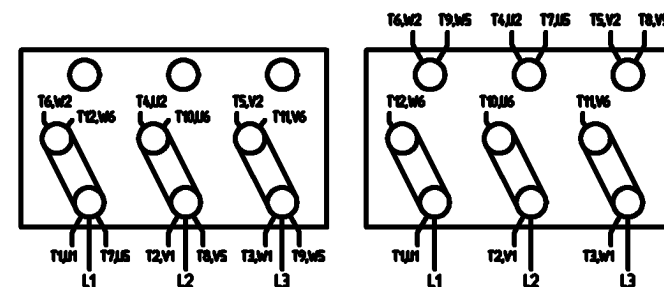
LINE LEADS



12 LEAD DELTA CONNECTION ACROSS THE LINE START
(FOR Y START DELTA RUN, REMOVE THE JUMPERS)

LOW VOLTAGE
MUST BE REWIRED AS SHOWN

HIGH VOLTAGE
FACTORY WIRED FOR HIGH VOLTAGE AS SHOWN



				TOLERANCES UNLESS SPECIFIED		<p>ELECTRIC MOTORS GEARMOTORS AND DRIVES</p>	DRAWN	CJW 08/28/02	
				DEC.	INCHES		CHK		
				X	+ .1		APPO		
				XX	+ .01		SCALE	1:1	
				XXX	+ .005		REF		
				XXXX	+ .0005	FINISH			
NO.	REVISION	BY & DATE	CHK	ANG	+ 1/2°		PREV		
THIS DRAWING IN DESIGN AND DETAIL IS OUR PROPERTY AND MUST NOT BE USED EXCEPT IN CONNECTION WITH OUR WORK. ALL RIGHTS OF DESIGN AND INVENTION ARE RESERVED. THIS IS AN ELECTRONICALLY GENERATED DOCUMENT - DO NOT SCALE THIS PRINT.				RFP	CAD FILE	00417203	SIZE	DRAWING NO.	REV.
				DST			A	004172-03	

```
ERROR: syntaxerror  
OFFENDING COMMAND: --nostringval--
```

```
STACK :
```

```
/CB  
-dictionary-  
/Pscript_WinNT_Compact  
-dictionary-
```