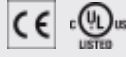


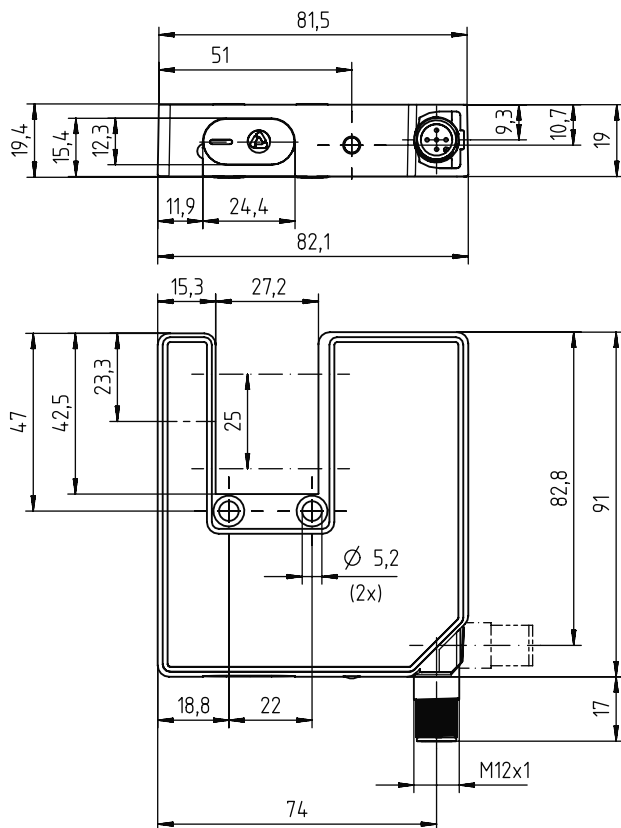
/// GS 754B


With mouth widths of 27 or 100 mm, this forked photoelectric sensor delivers accurate measurement results over a 25 mm long measurement range thanks to its CCD line. Depending on the configuration, it is possible to measure transparent edges, the diameters of wires, threads and much more.


Benefits:

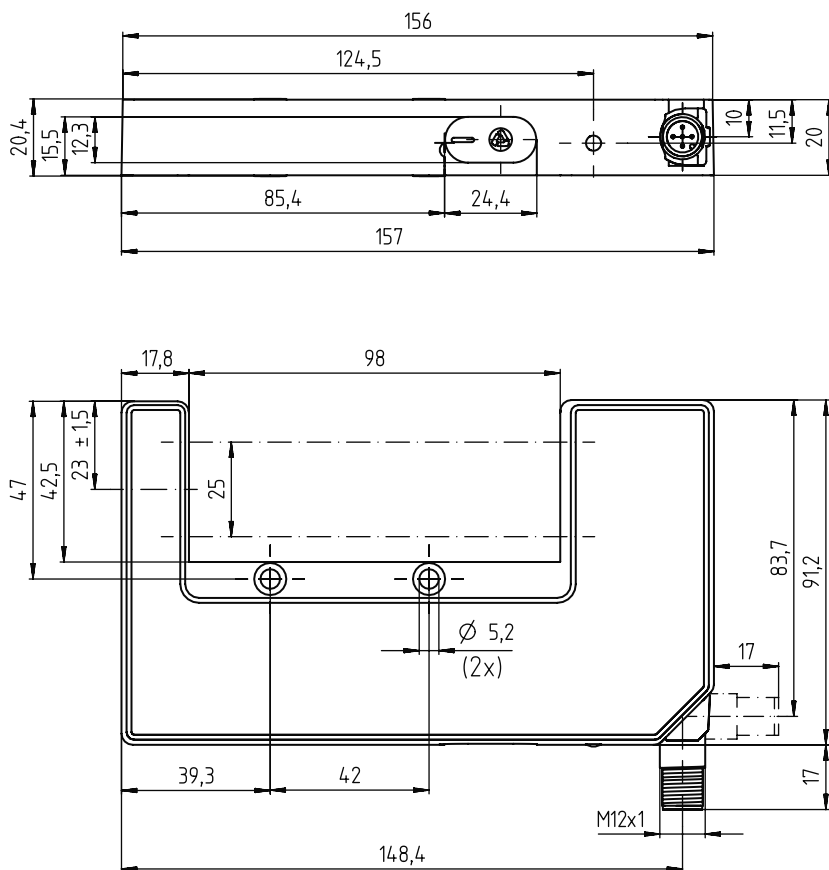
- Measurement range 25 mm
- Resolution: 14 µm
- Configurable measurement range and measure mode
- Teach-in function, switching or warning output
- Multiple object detection
- Standard interface (RS 232) for configuration and visualization
- M12 data interface (process interface) with analog or digital data output
- M12 turning connector

Part no.	Part description	Mouth width	Mouth depth	Measurement field length	Light source	Analog output	Switching inputs/outputs	Interface	Connection
50119712	GS 754B/C4-98-S12	98 mm	42 mm	25 mm	LED, infrared	Current	Switching output/switching state, teach input		Connector, M12, metal, 5-pin
50119711	GS 754B/D3-98-S12	98 mm	42 mm	25 mm	LED, infrared			RS 422	Connector, M12, metal, 5-pin
50119710	GS 754B/D24-98-S12	98 mm	42 mm	25 mm	LED, infrared		Switching output/switching state, teach input	RS 232	Connector, M12, metal, 5-pin
50117818	GS 754B/V4-98-S12	98 mm	42 mm	25 mm	LED, infrared	Voltage	Switching output/switching state, teach input		Connector, M12, metal, 5-pin
50115803	GS 754B/C4-27-S12	27 mm	42 mm	25 mm	LED, infrared	Current	Teach input, switching output/switching state		Connector, M12, metal, 5-pin
50115806	GS 754B/D3-27-S12	27 mm	42 mm	25 mm	LED, infrared			RS 422	Connector, M12, metal, 5-pin
50115807	GS 754B/D24-27-S12	27 mm	42 mm	25 mm	LED, infrared		Teach input, switching output/switching state	RS 232	Connector, M12, metal, 5-pin
50115809	GS 754B/V4-27-S12	27 mm	42 mm	25 mm	LED, infrared	Voltage	Teach input, switching output/switching state		Connector, M12, metal, 5-pin

Dimensioned drawings: GS 754B


GS 754B ...-27-S12 measuring forked sensor

Dimensioned drawings: GS 754B



GS 754B...-98-S12 measuring forked sensor

Switching sensors

Measuring sensors

Products for safety at work

ACCESSORIES: GS 754B

Connection technology

Connection cables

Part no.	Part description	Connection 1	No. of pins	Cable length	Sheathing material
50104556	K-D M12W-5P-2m-PVC	Connector, M12, angled, female	5-pin	2,000 mm	PVC
50104558	K-D M12W-5P-5m-PVC	Connector, M12, angled, female	5-pin	5,000 mm	PVC
50104555	K-D M12A-5P-2m-PVC	Connector, M12, axial, female	5-pin	2,000 mm	PVC
50104557	K-D M12A-5P-5m-PVC	Connector, M12, axial, female	5-pin	5,000 mm	PVC

Further connection cables can be found on our website

Identification

Data transmission / Control components

Industrial image processing

Accessories