



ROTOSCAN RS4-4 / RS4-4E

Laser Scanner for Personal Protection and Measurement Tasks

Connecting and Operating Instructions




About these connecting and operating instructions of the RS4 and the RS4soft operator's manual


These connecting and operating instructions for the ROTOSCAN RS4 contain important information on proper usage of laser scanners and usage in accordance with intended purpose. For additional information on the configuration of the RS4, please refer to the operator's manual for the RS4soft configuration and diagnostics software.




It is essential to observe all information in the connecting and operating instructions and in the operator's manual, especially the safety notes.

The connecting and operating instructions and the operator's manual must be kept in a safe place. They must be available during the entire period when the ROTOSCAN RS4 is in use. Documents are also automatically installed on the PC when RS4soft is installed and can be viewed at any time with the Help menu.

Safety and warning notices are identified by the symbol .

References to important information are identified by the symbol .

References to the safety of laser devices are identified with the symbol .

Leuze lumiflex GmbH + Co. KG is not liable for damage caused by improper usage. The user must also be familiar with all the RS4 manuals to be able to use the system properly.

Version: V5.1

© Reprinting and duplication is prohibited in whole or in part without prior approval of

Leuze lumiflex GmbH + Co. KG
Liebigstrasse 4
D-82256 Fürstenfeldbruck, Germany
Tel. +49 81 41 / 53 50-0
Fax +49 81 41 / 53 50-190
E-mail: lumiflex@leuze.de
<http://www.leuze.de>

CONTENTS

1	Approvals and Certificates	6
1.1	Manufacturer Certification	6
1.2	Approval and Declaration of EC Conformity	6
1.3	Specialized Technical Terms and Abbreviations	7
1.4	Guidelines and Standards	8
2	System Overview	9
2.1	Brief Description and Functional Principle of the ROTOSCAN RS4	9
2.2	Special Features of the ROTOSCAN RS4-4 / RS4-4E	11
3	Safety notes and usage in accordance with intended purpose	13
3.1	General safety notes	13
3.2	Usage requirements and usage in accordance with intended purpose	13
3.3	Restrictions for Use	14
3.4	Information Related to Detection Zone Changeover	15
3.5	General information related to determining detection zone contours	16
3.6	Additional Safety Notes for Stationary Use	17
3.7	Additional Safety Notes for Mobile Use	18
4	Applications for the ROTOSCAN RS4-4 / RS4-4E	19
4.1	Stationary Safeguarding of the Danger Area	19
4.2	Access guarding by passage monitoring	20
4.3	Safeguarding of danger points based on hand and arm detection	21
4.4	Mobile Safeguarding of Automatic Guided Vehicles	22
4.5	Protecting Transporter Trolleys against Collisions	22
4.6	Other Possible Applications	24
5	Information for Planning and Mounting	24
5.1	Attachment and Dimensions	25
5.2	Mounting Adjacent Sensors	25
5.2.1	Direct irradiation	25
5.2.2	Indirect Irradiation	26
5.3	Information on Setting the Dimensions of Detection Zones	26
5.3.1	Methods of Configuring Detection Zones using the PC	26
5.3.2	Range of the Detection Zone, Resolution	27
5.3.3	Range of the Warning Zone, Resolution	27
5.3.4	Range of the measurement field	28
5.3.5	Required Detection Zone Additions Z	28
5.4	Safeguarding Stationary Danger Zones	29
5.4.1	The Purpose of Safeguarding	29
5.4.2	Mounting Position	29
5.4.3	Mounting Height	30
5.4.4	Recommendations for Mounting to Prevent Unmonitored Zones	30
5.4.5	Additions	34
5.4.6	System Availability	34
5.4.7	Restart Interlock	35
5.4.8	Calculating the Detection Zone Dimensions for Safeguarding an Area	36
5.5	Access protection	41
5.5.1	Object of protection	41
5.5.2	Installation position	41
5.5.3	Safety-relevant settings, and calculation of the safety distance	41
5.5.4	Definition of the reference boundary	42

5.6	Protecting danger points	43
5.6.1	Object of protection	43
5.6.2	Installation position	43
5.6.3	Safety-related settings, and calculation of the safety distance	43
5.6.4	Defining the reference boundary	45
5.7	Safeguarding Mobile Machines	46
5.7.1	The Purpose of Safeguarding	46
5.7.2	Mounting Position	46
5.7.3	Mounting Height	46
5.7.4	Recommendations for Mounting to Prevent Unmonitored Zones	47
5.7.5	Additions	49
5.7.6	System Availability	50
5.7.7	Restart	50
5.7.8	Calculating the Dimensions of the Detection Zone of an AGV Application	51
6	Information on Detection Zone and Warning Zone Changeovers	54
6.1	Sequence of a Zone Pair Changeover from FP 2 to FP 4 (Example)	54
6.2	Practical AGV Application (Example)	55
7	Functions of the ROTOSCAN RS4-4 / RS4-4E	58
7.1	Restart	58
7.2	Channels for Zone Pair Changeovers, FP 1 to FP 4	58
7.3	Alarm 1 (X1-5)	59
7.4	Alarm 2 (X1-15)	59
7.5	OSSD 1 (X1-12) and OSSD 2 (X1-11)	60
7.6	Data Communication	60
8	Integrating the ROTOSCAN RS4-4 into Machine Controls	60
8.1	Integrating the ROTOSCAN RS4 with External Wiring with Relays and Quadruple Zone Pair Changeover	61
8.2	Connecting the ROTOSCAN RS4 to a Safety Sequence Circuit with Manual Restart, Relay Monitoring, without Zone Pair Changeover	63
8.3	Connecting the ROTOSCAN RS4 to a PLC with Corresponding Safety Level (Cat. 3 or higher, EN 954) and Zone Pair Changeover	64
9	Electrical connection	65
9.1	Electrical Power Supply	65
9.2	Connecting the PC and Control Cables to the Scanner	65
9.3	Connector Assembly	66
9.4	Points to Consider When Preparing and Laying the Cables	66
9.5	Interface Pin Assignments	67
10	Commissioning	69
10.1	Hardware and Software Requirements	69
10.2	Installing "RS4soft" and Starting Up the ROTOSCAN RS4	69
10.3	ROTOSCAN RS4-4 / RS4-4E status indicator	71
10.4	Status information of the ROTOSCAN RS4	73

11	Maintenance and Testing	74
11.1	Test before First Startup by Person Qualified and Authorized to Perform the Task	74
11.2	Extended Shutdown of the RS4	74
11.3	Regular Tests by a Person Qualified and Authorized to Perform the Task	75
11.4	Daily Test by with Test Piece Performed by Responsible Operating Personnel	75
11.4.1	Checklist for Daily Test of Stationary Applications by Responsible Operating Personnel	76
11.4.2	Checklist for Daily Test of Mobile Applications by Responsible Operating Personnel	77
11.5	Checklist for Testing Stationary Applications	78
11.6	Checklist for Testing Mobile Applications	80
11.7	Replacing the Optical Window	82
11.7.1	General information:	82
11.7.2	Initial Measurement of the New Optical Window	84
11.7.3	Procedure when Using the RS4soft User Software Version 1.09 or later	85
11.8	Cleaning	86
11.8.1	Cleaning the Optical Window when Dirty	86
11.8.2	Cleaning the Optical Window; Cleaning Diffusing Light Panes	87
12	Service	88
12.1	Disposal	88
13	Delivery Package	88
13.1	Accessories and spare parts	89
13.2	Coding of the Control Cable X1	91
14	Technical data	92
14.1	Test Pieces	92
14.2	Detection zone	92
14.3	Detection Zone Additions	93
14.4	Warning zone	93
14.5	Contour Measurement	93
14.6	Electrical Power Supply	94
14.7	Inputs	94
14.8	Outputs	94
14.9	Software	95
14.10	Interfaces	95
14.11	Optics	95
14.12	Environment and Material	96
14.13	Dimensional drawings of the ROTOSCAN RS4	97
14.14	Dimensional drawings of the mounting system	98
15	Diagnostic Codes and Causes	99
16	Declaration of conformity	102

1 Approvals and Certificates

1.1 Manufacturer Certification



The manufacturer of the ROTOSCAN RS4 distance sensor, Leuze lumiflex GmbH + Co. KG, based in 82256 Fürstenfeldbruck, Germany, has a quality assurance system that is certified in keeping with ISO 9001.

In the development and manufacture of the ROTOSCAN RS4 distance sensor all the European guidelines and standards that apply were taken into account.

1.2 Approval and Declaration of EC Conformity

EC prototype testing in accordance with
DIN EN 61496 - 1 and
IEC 61496 - 3

TÜV
PRODUCT SERVICE GMBH
IQSE
Ridlerstr. 65
80339 Munich



1.3 Specialized Technical Terms and Abbreviations

AGV	Automatic Guided Vehicle (FTS in German)
AOPD	Active Optoelectronic Protective Device
AOPDDR	Active Optoelectronic Protective Device responsive to Diffuse Reflection
BWS	See ESPE
EDM	External Device Monitoring Monitoring of external control parts (relay monitoring)
ESPE	Electro-Sensitive Protecting Equipment
FTS	Automatic Guided Vehicle (see AGV)
N.O.	Normal open contact
OSSD	Output Signal Switching Device Safety-relevant switch output
PC	Personal Computer
DZ	Detection Zone, German SF
Reset	Defined Reset or ROTOSCAN RS4-4 / RS4-4E
RS 232	RS 232 interface
RS 422	RS 422 interface
ZP	Zone pair (contains 1 x detection zone and 1 x warning zone), German FP
WZ	Warning Zone, German WF

Table 1.3-1: Specialized Technical Terms and Abbreviations

1.4 Guidelines and Standards

The following guidelines and standards are of critical importance for the implementation of laser scanners. Guidelines providing particularly relevant information for users of such systems are marked with an asterisk (*).

Guideline/Standard	Designation	
European Guidelines		
98 / 37 / EG	Machine guideline	
73 / 23 / EWG	Low voltage guideline	
89 / 336 / EWG	EMC guideline	
A Standards		
DIN EN 292 1 and 2	Safety of machinery, basic concepts	
DIN EN 1050	Principles of risk assessment	*
B1 Standards		
DIN EN 294	Safety distances	*
DIN EN 954 -1	Safety-related parts of controls	
DIN EN 999	Approach speeds of body parts	*
B2 Standards		
DIN EN 60204 -1	Electrical equipment of machines	
DIN EN 60825 -1	Safety of machines with laser components	
DIN EN 61496 -1	Electro-sensitive protecting equipment	*
IEC 61496-3	AOPDs responsive to diffuse reflection (AOPDDR)	*
C Standards		
DIN EN 775	Industrial robots; safety	*
DIN EN 1525	Automatic guided vehicles (AGV) and their systems	*
DIN EN 12895	Floor conveyor vehicles, electromagnetic compatibility	

Guideline/Standard	Designation	
National Standards		
DIN 15185-2	Warehousing systems using rail-guided aisle conveyance vehicles	*

Table 1.4-1: Guidelines and Standards

This list does not claim to be complete. In certain cases, the concrete requirements of the application will necessitate the application of additional guidelines and standards! Copies of safety standards can be purchased from the Beuth Publishing Company in Berlin, Germany.

2 System Overview

2.1 Brief Description and Functional Principle of the ROTOSCAN RS4

The ROTOSCAN RS4-4 / RS4-4E is an optical distance sensor that takes two-dimensional measurements. It could also be referred to as an optical area radar device. The sensor uses a rotating deflecting unit to periodically emit light pulses within a working range of 190°.

If these pulses strike a person or an obstacle, the reflected light is received and evaluated by the ROTOSCAN RS4-4 / RS4-4E. The scanner calculates the precise coordinates of the person or object based on the travel time of the reflected light and the current angle of the deflecting unit. If the person or obstacle is within the bounds of a previously defined area called a detection zone, a safety-oriented switching function is performed. This switching function causes the semiconductor outputs to be switched off. The safety-oriented switching function cannot be reset until the detection zone is clear. Depending on the operating mode, the reset can be initiated either automatically or manually.

DZ = Detection zone, max. 4 m

WF = Warning zone, max. 15 m

a = Maximum registration of measurement values
max. 50 m

b = Detection zone programmed
in the ROTOSCAN RS4
(example)

c = Warning zone programmed
in the ROTOSCAN RS4
(example)

d = Configurable detection zone
and warning zone
expansion (-5 °)

e = Configurable detection zone
and warning zone
expansion (+5 °)

f = Object in the detection zone

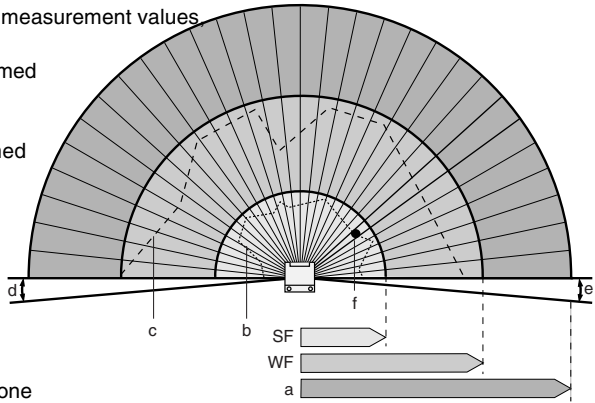


Fig. 2.1-1: The 190° angle range of the ROTOSCAN RS4 is divided into 0.36° angle segments.

A laser diode coupled with transmitter optics produces focused light pulses. These pulses are projected across the monitored surface by a rotating mirror in such a way that a light pulse is triggered in each of the angle segments within 40 ms (scanning rate: 25 scans/s).

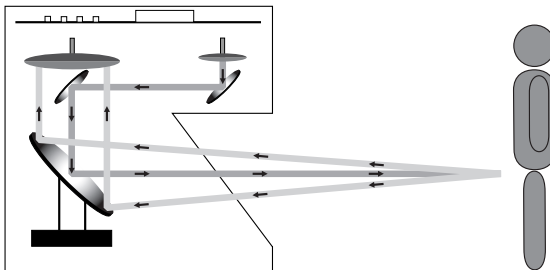


Fig. 2.1-2: Functional principle of the ROTOSCAN RS4

The ROTOSCAN RS4 can detect people up to a distance of 4.0 m (corresponds to the detection zone) – even if they are wearing very dark clothing or exhibit a low degree of reflectance. Dangerous movements are brought to a standstill by two failsafe semiconductor outputs.

Objects (min. 150 x 150 mm) are detected up to a distance of 15 m (corresponds to the warning zone) and signaled by way of a non-safety-related semiconductor output.

Four programmable zone pairs (each of which consists of one detection zone and one warning zone) enable the scanner to be optimally adapted to the needs of each particular application.

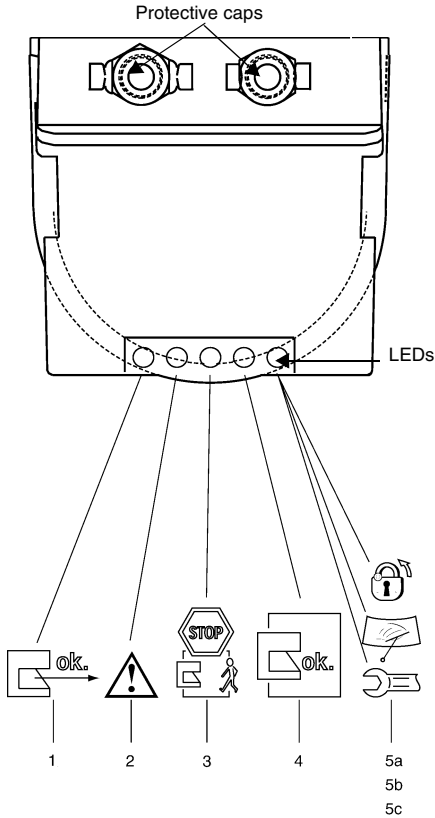
The ROTOSCAN RS4 can be implemented not only on machines and systems (stationary safeguarding of danger zones), but also on vehicles (mobile safeguarding of transport vehicles).

Due to its wide range of measurement and its non-contact, electro-sensitive measurement principle, the ROTOSCAN RS4 can be effectively used as a protective device for virtually any application.

2.2 Special Features of the ROTOSCAN RS4-4 / RS4-4E

- Four freely programmable detection zones (up to a maximum of 4 m)
- Four freely programmable warning zones (up to a maximum of 15 m)
- Expanded monitoring range of up to 190 °
- Compact design (W x D x H: 140 mm x 135 mm x 155 mm)
- Low weight (2 kg)
- Low power requirements (300 mA, plus the load at the outputs)
- Two types of interfaces at one Sub-D jack (RS232 and RS422)
- User-friendly software

Status displays on the RS4



- 1 = Sensor function
- 2 = Warning zone is assigned
- 3 = OSSDs are turned off
- 4 = OSSDs are turned on
- 5a = Restart interlock locked, Continuous light
- 5b = Optical window is dirty, Light flashing at 0.25 Hz
- 5c = Fault, light flashing at 16 Hz

Assignment of interface X1

FP 4	8	•	15	Alarm 2
FP 3	7	•	14	Do not assign
FP 2	6	•	13	Do not assign
Alarm 1	5	•	12	OSSD2
FP 1	4	•	11	OSSD1
UB	3	•	10	Do not assign
Restart	2	•	9	Do not assign
GND	1	•		

Assignment of interface X2 as RS232 port

Reserved	1	•	6	RS232 detection
TxD	2	•	7	Do not assign
RxD	3	•	8	Do not assign
Reserved	4	•	9	Reserved
GND/shield	5	•		

Assignment of interface X2 as RS432 port

Tx +	1	•	6	RS432 detection
Tx -	2	•	7	Do not assign
Rx -	3	•	8	Do not assign
Rx +	4	•	9	Reserved
GND/shield	5	•		

Connection - Pin 5 to Pin 6



3 Safety notes and usage in accordance with intended purpose

3.1 General safety notes

Leuze lumiflex products are developed and manufactured with careful application of standard rules of the industry. The protective function of the devices can be negatively affected, however, if they are used improperly or not in accordance with their intended purposes. If this occurs, it may not be possible to safeguard danger areas completely or at all, which may result in danger to life and limb for persons who are in the general area of the machines or systems.

Caution – laser radiation!



The ROTOSCAN RS4 is a laser device belonging to laser class 1. The valid legal and local regulations for operating laser systems must be complied with.
Avoid positioning the scanner at eye level.

3.2 Usage requirements and usage in accordance with intended purpose

The relevant regulations for machine safety apply for the use of the laser scanner ROTOSCAN RS4-4 / RS4-4E. Responsible authorities (for example professional trade unions, OSHA) are also available for questions related to safety. In general, the following usage requirements must be observed:

- If the scanner is enclosed in a protective housing, additional window material, such as plastic or glass must not be used as it may impair the detection.
- Avoid touching the scanner optical window and the six diffusing light screens.
- The ROTOSCAN RS4 is not suitable for use as a protective device:
 - if it is possible that dangerous fluids will be spewed out or objects will be ejected. for machines with long braking times (max. depth of the detection zone: 4 m)
For these cases, Leuze lumiflex offers suitable safety interlocking devices (safety switches) with and without guard locking.
- The ROTOSCAN RS4 corresponds to Type 3 in accordance with IEC 61496-1 and –3A safety category of 3 in accordance with EN 954-can be achieved with the ROTOSCAN RS4 if all other elements in the safety chain are set up to stop the dangerous motion in accordance with that safety category.
- The electrical connection of the RS4 to the control system must only be made by an electrician.
- The 24-V DC power supply (+20 %, -30 %) must be ensured by a safe network disconnect in accordance with IEC 742. The same requirements apply to all connected input and output circuits..

- The 24-V DC power supply must be fed to the scanner through a separate branch with a 1.25 Amp delayed action fuse in the control cabinet.
- Guard operation is only permitted with the control cable (X1) of the dummy connector . This also applies for transport and storage.
- The safety output has a double design. The two OSSDs must always be included in the shut-off circuit of the machine in such a manner that either of the two is completely sufficient by itself to turn off the motion that presents a danger.
- The alarm output 1 (Pin 5 on X1) must not be used to switch safety-related signals.
- System tests (of the scanner, machine, control components and switch components) may only be performed when they do not result in potential hazards for people.
- Tampering with or making changes to the ROTOSCAN RS4 can result in the loss of the safety function.
- Only expert trained personnel is allowed to perform startup, maintenance, parameter settings or detection zone configurations. Familiarity with the safety notes in this Connecting and Operating Instruction and in the operating instructions for the "RS4soft" program constitutes part of this expert knowledge.
- The password required for configuring safety-relevant parameters must be kept in a secure location by the safety official. Information about password levels can be found in the "RS4soft" user's manual.
- If the machine is designed for start interlock /manual restart, all detection zones must be checked before enable - no one is permitted in the danger area.

3.3 Restrictions for Use

- Glass, highly reflective materials such as mirrors (reflectance > 10,000 %), or objects that do not reflect any light back to the sensor can falsify the measurement result. More information is available in Chapter 5.3.5.
- Do not expose the ROTOSCAN RS4 to flying sparks (for example a welding flash). Doing so may cause damage to the optical window.
- Vapor, smoke, dust and all particles visible in the air have a significant negative effect on measurement values and will result in the semiconductor outputs being turned off.
- Avoid extreme variations in temperature.

- Make sure that the following types of light sources are not present on the scanning plane:
 - Laser light from one or more other scanners or sensors
 - Infrared light
 - Fluorescent light
 - Stroboscopic light

Please consider as well Chapter 5.2.

- It must not be used with internal combustion engines.
- The ROTOSCAN RS4 is conceived for use inside enclosed spaces and with the operating parameters listed in the technical specifications (temperature, humidity, shock, vibration, etc.). Please refer to the list of parameters in Chapter 14.
- Avoid having reflective surfaces (such as glass, mirrors, retro-reflectors, etc.) at fixed contours in the scanning plane. If this is not possible, an additional detection zone must be provided.

3.4 Information Related to Detection Zone Changeover

If alternating operation is included in the design, and thus detection zone changeover, the activation and effect of the detection zone in question must match the alternating operating mode.

- The new detection zone must be activated before turning off the previous detection zone. The time at which the changeover is made must be based on a risk analysis.
- Braking paths, response and coast-down times must be taken into consideration (for example overlapping detection zones).
- A “Start interlock” function is provided.
- If the machine has a restart key, it must not be possible to operate it from inside the detection zones. All danger areas must be visible from the position of the button. Before releasing the start/restart interlock, all detection zones must be tested. No one is permitted inside the danger areas.
- There must be no unmonitored zones inside the danger areas.
- There must be no possibility for direct access to the danger area that shortens the necessary safety distance (use a protective grid, for example).
- The information on required detection zone additions in Chapter 5 must be observed.

3.5 General information related to determining detection zone contours

- Shadow effects (e.g. surfaces or areas located behind stationary objects) must be considered. As a rule, insufficient safeguarding must be adequately supplemented by further safety measures such as guard fences, light curtains, and the like!
- Access to the detection zone in the dangerous area is not permitted.
- When setting the dimensions of the detection zone, you must comply with the formulas cited in Chapters 5.4.8 and 5.7.8 ! Be sure to comply with higher-level machine standards (e.g. DIN EN 1525) if applicable.
These contain individual specifications, for example, on points of access to the danger zone and, if applicable, detection zone additions that must be given special consideration.
They also provide information on how to measure safety distances at machines.
- Detection zones with a radius smaller than 20 cm (at or close to the scanner) are not admissible. 20 cm is the preset minimum contour.
- When setting the dimensions of the detection zones, please comply with the maximum angle error stated in the technical specifications (Chapter 14.11).
- Needle-shaped detection zone contours are not permitted, since they do not ensure any protective effect. For additional information, please refer to the RS4soft user software (Chapter entitled "Definition of Detection Zones").
- Due to possible measurement errors, every detection zone has an additions area in which detection is not guaranteed under all conditions. Please consider as well Chapter 5.3.5. Read Chapter 5.4.6 and 5.7.6 for information on optimizing system availability.
- The required safety distances must be taken into account when making detection zone configurations. Safety distances are calculated according to formulas found in either the machine-specific C standards or the general B standards IEC 61496-3 in combination with DIN EN 999 (see Section 2 and 5 of the standard). Tolerance fields and/or additions
(make sure to consider Chapter 5.4 and 5.7).
- After the detection zones have been set, make a printout of the following information:
 - Detection zone contour with the X and Y coordinates
 - Date
 - Serial number of the scanner
 - Name of the safety official
- When calculating the additions, be sure to consider whether the dust algorithm is deactivated or activated (see Chapter 5.3.5).

- When calculating the safety distances, be sure to consider all delay times, such as the response time of the scanner, response time of the control elements, and braking times and/or stopping times of the machine/system or AGV! Variations in delay time caused by factors such as reduced braking power must also be taken into consideration.
- The effectiveness of the switch-off function must be tested along the defined contour of the detection zone during the initial startup and subsequent to any changes made to a machine or system.
- The effectiveness of the switch-off function must be tested for the detection zone contours along the entire driving route during the initial startup and following any changes made to an AGV.
- In the event that there is insufficient room available to allow the full dimensions of a detection zone, for example because of the position of the scanner, additional safety measures (e.g. safety grids) must be installed.
- Following each definition of and change to the detection zones, the configuration must be checked to see whether the possibility of people standing in the danger zone as well as any barriers provided have been considered by an appropriate layout of the detection zone(s).

3.6 Additional Safety Notes for Stationary Use

- If the danger zone can be accessed from the side, and if the detection zone cannot be extended sufficiently in this direction, additional safety measures (e.g. safety fences) must be installed.
- We recommended marking the contour of the detection zone on the floor by painting a colored line or applying colored adhesive tape.
- Check the mounting regularly (in particular, the angle of inclination) in order to guarantee the reliability of detection.

3.7 Additional Safety Notes for Mobile Use

- There are additional requirements for the use of scanners on automatic guided vehicles (AGV) and transporter trolleys according to DIN EN 1525.
- If possible, expanded detection zones to each side should be provided in order to safeguard access from the side and directly in front of the vehicle.
- If it is not possible to completely safeguard the contour of the vehicle including its trailer and the dimensions of its load while making curves, additional protective devices such as switch strips must be attached to the side of the vehicle.
- There must be a minimum safety distance S_{AB} of 500 mm to the side of the vehicle on both sides. A one-sided minimum safety distance is admissible in certain exceptional cases. The specifications of DIN EN 1525 must be complied with.
- The basic value of the detection zone width for an AGV corresponds to the maximum vehicle width including the trailer and the dimensions of the load plus the detection zone additions Z_S . Furthermore, the greatest possible lateral shift of the AGV while making curves must be considered when defining detection zones.
- If the ROTOSCAN RS4 is mounted on vehicles, the mounting (especially the angle of inclination), the vehicles' braking power, and if applicable, play in the vehicle guidance (the difference between the optimum and actual line of guidance) must be regularly checked in order to guarantee the reliability of detection.

4 Applications for the ROTOSCAN RS4-4 / RS4-4E

Due to its continuous coverage of the area, its wide range, and the ability to select among four zone pairs, the ROTOSCAN RS4-4 / RS4-4E is able to handle even complex applications

4.1 Stationary Safeguarding of the Danger Area

The ROTOSCAN RS4-4 is used to safeguard dangerous working areas at machines and systems where both constant and variable demands are placed on the geometrical shape of the detection zone. The aim is to prevent people from entering the danger zone or reaching the danger point with their upper and/or lower extremities, at the same time without impeding the production process.

The ROTOSCAN RS4-4 can be mounted directly at the machine table or on the side or in front of the machine.

- DZ1= Detection zone 1, activated
- DZ2= Detection zone 2, deactivated
- WF1= Warning zone 1, activated
- WF2= Warning zone 2, deactivated
- a = Emergency stop and manual restart interlock
- b = ROTOSCAN RS4-4

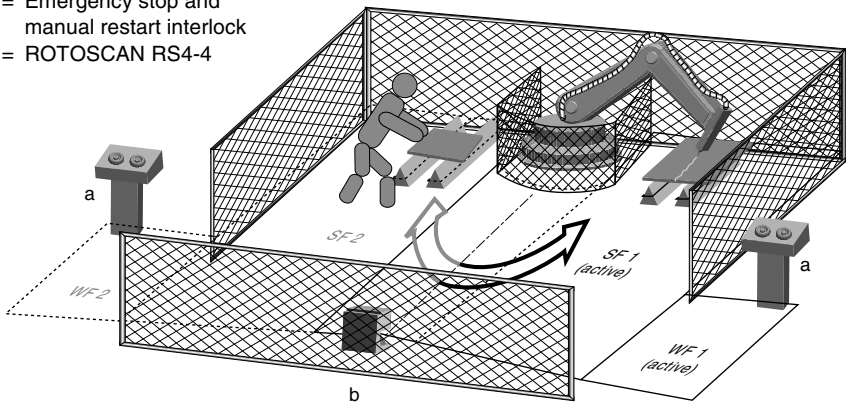
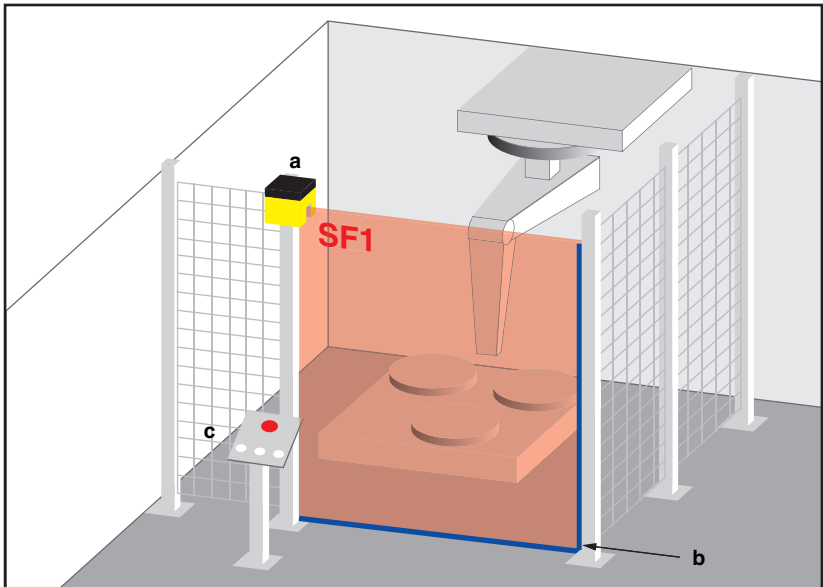


Fig. 4.1-1: Stationary danger zone monitoring of a robot with two alternating work areas (example)

Please comply with the safety notes in Chapter 3 and Chapter 5.4.7. For an example of how to calculate detection zone measures, please refer to Chapter 5.4.8.

4.2 Access guarding by passage monitoring

Access guarding by passage monitoring (whole body trip control) is a suitable method when the access to a machine or to a hazardous zone can be precisely defined in structural terms, and there is no other unprotected access to the area. It is best to mount the laser scanner above the passage in question, in vertical alignment. In order to secure the protective equipment, laser scanner and fence against inadvertent misadjustment and manipulation, the detection zones of the ROTOSCAN RS4-4E must be defined on the basis of a reference boundary. In this operating mode, the scanner will use the polled environment as a reference and so check for changes in the layout of the protective equipment, as well as checking every one of the individual measurements it carries out with a view to detecting an intrusion. An example of the configuration of the ROTOSCAN RS4-4E to give access protection by passage monitoring will be found in Chapter 5.5.



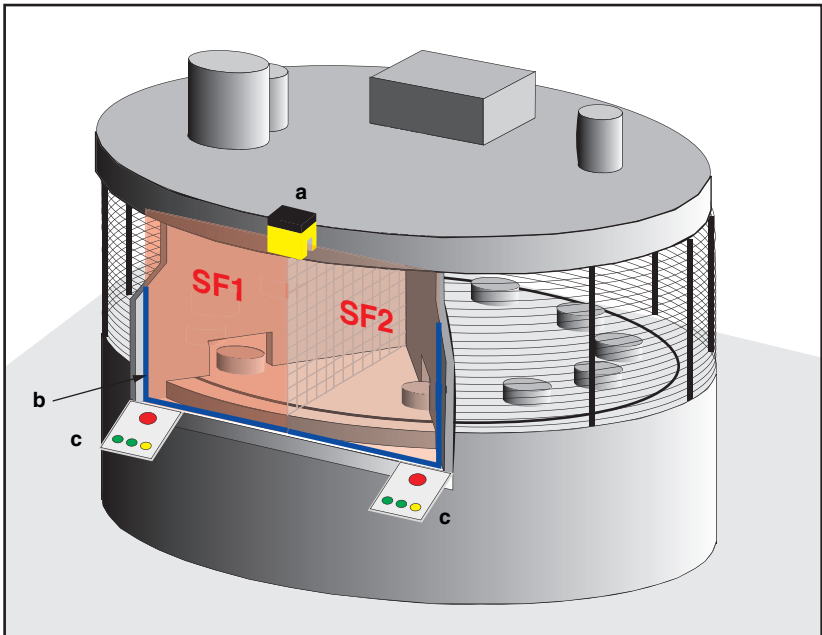
- a = ROTOSCAN RS4-4E
 - b = Reference boundary of the detection zone
 - c = Emergency stop and triggering of the manual restart interlock
- SF1 = Detection zone 1, enabled

Fig. 4.2-1: Access protection by passage monitoring with system check of a reference boundary

4.3 Safeguarding of danger points based on hand and arm detection

If the machine operator, in close proximity to the danger zone, needs to halt the hazardous movement of the machine or to coordinate the handling of workpieces or their removal from the machine, the machine must be provided with protection at the danger point. To safeguard danger points in this way a protective system needs to be installed. The ROTOSCAN RS4-4E is certified as a system providing hand and arm protection, and is able in such a situation to guarantee flexible safety conditions in the workplace. This may be combined with alternation of the detection zones. In order to safeguard the protective equipment, laser scanner and side-mounted panels (which serve as a reference and provide additional access protection) against inadvertent misadjustment or manipulation, the detection zones of the ROTOSCAN RS4-4E must be defined on the basis of a reference boundary.

An example of the configuration of the ROTOSCAN RS4-4E for the protection of danger points based on hand and arm protection may be found in Chapter 5.6.



- a = ROTOSCAN RS4-4E
- b = Reference boundaries of the detection zones
- SF1= Detection zone 1, enabled
- SF2 = Detection zone 2, disabled
- c = Emergency stop and manual triggering of restart interlock, acknowledgement for switchover

Fig. 4.3-1: Safeguarding of danger points based on hand and arm protection with alternation of detection zones

4.4 Mobile Safeguarding of Automatic Guided Vehicles

For this application, the ROTOSCAN RS4-4 is installed on automatic guided vehicles in order to monitor the vehicle path. The aim is to detect people or objects in the path of the vehicle and to automatically bring the vehicle to a halt. Safety systems available up to now, such as bumpers or safety bars, have allowed only very low driving speeds to be maintained. In contrast, using the ROTOSCAN RS4-4 as a non-contact “advance bumper” results in the creation of a substantially larger safety zone.

The vehicles can move faster, and down times are reduced to the necessary minimum.

DZ1= Detection zone 1 for slow speed

DZ2= Detection zone 2 for high speed

DZ3= Detection zone 3 for a route curving to the left

DZ4= Detection zone 4 for a route curving to the right

a = Traveling straight ahead

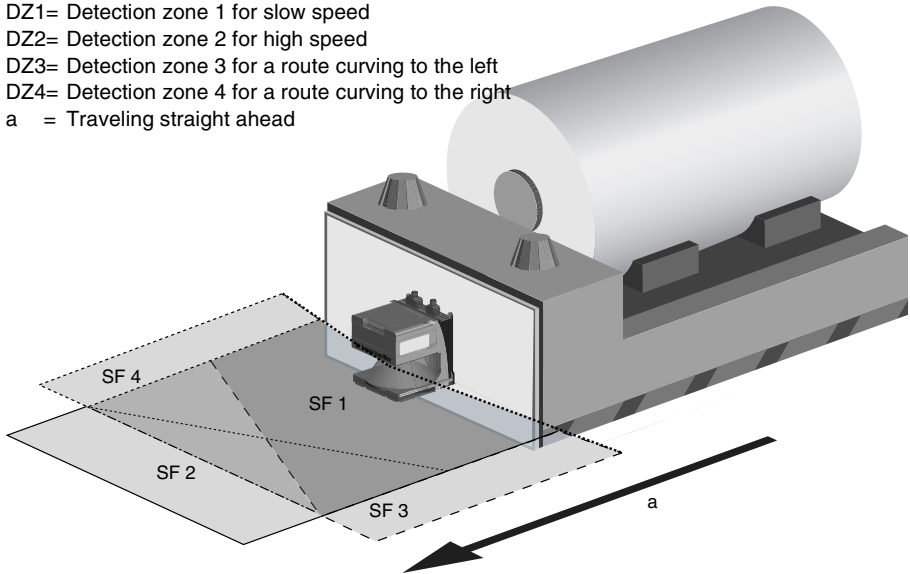


Fig. 4.4-1: Safeguarding an automatic guided vehicle (example)

Please comply with the safety notes in Chapter 3. For an example of how to calculate detection zone measures, please refer to Chapter 5.7.8.

4.5 Protecting Transporter Trolleys against Collisions

Transporter trolleys are generally guided along a system of rails or grooves in the floor. Hence the vehicle paths are usually just slightly wider than the trolleys themselves. This represents an increased hazard for people, since it is impossible to get out of the way of the trolley. For this reason, transporter trolley are used in enclosed areas equipped with suitable access safeguarding.

- DZ1= Detection zone 1 for slow speed
- DZ2= Detection zone 2 for high speed
- a = Emergency stop and triggering manual restart interlock
- b = Direction of travel
- c = Undercut

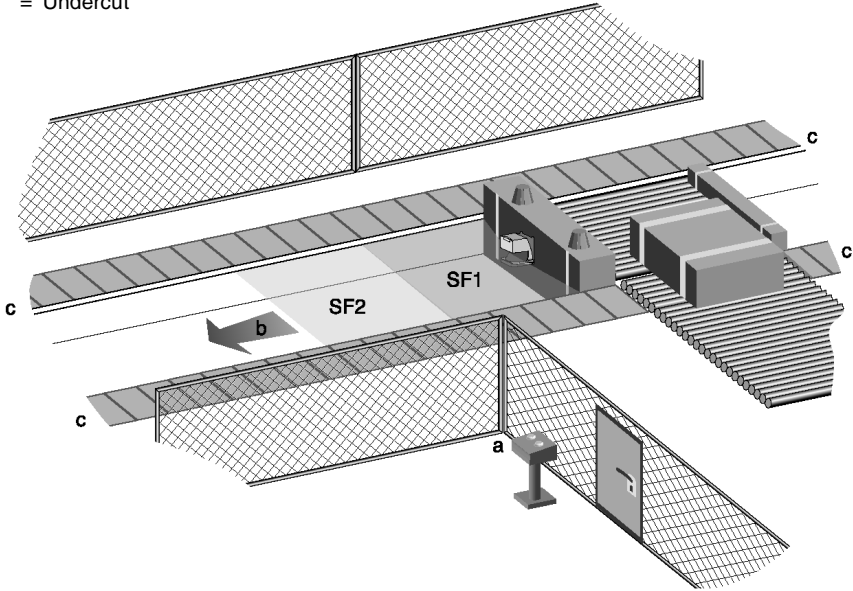


Fig. 4.5-1: Safeguarding a transporter trolley (example)

Please comply with the safety notes in Chapter 3 and Chapter 5.7.7.

In these cases, the ROTOSCAN RS4-4 is used to detect people or objects in the vehicle path and then automatically bring the vehicle to a halt. Select "Manual restart" mode.

The demands placed on the geometrical shape of the detection zone are determined by the vehicle width, speed, stopping distance and response time. Here as well, factors such as additions in the direction of travel for tolerances in the measurement value and reduced braking power due to wear and tear must be taken into consideration.

4.6 Other Possible Applications

- Object and contour measurement
- Logistics (counting, measuring, controlling)
- Projection control (e.g. in fully automatic parking ramps or lots)
- Safeguarding or monitoring enclosed spaces
- and many more

5 Information for Planning and Mounting

It is essential that the following key points be complied with so that the ROTOSCAN RS4-4 / RS4-4E can provide optimum performance:

- The ROTOSCAN RS4 must be placed so that areas of access to the danger zone being monitored are completely covered by the detection zone.
- The mounting position of the scanner should provide protection from humidity, dirt and extreme temperatures below 0° C or over 50° C.
- The mounting position must be selected in such a way as to minimize the possibility of mechanical damage. Additional protective cover panels or safety bars must be installed at exposed positions.
- Reinforcements, cover panels, mounting niches, and other machine elements may not in any way impair the field of view of the scanner.
- If there are areas of shadow caused by fixed obstacles that were defined as part of the detection zone boundary, these should be safeguarded (e.g. by safety grids) in order to prevent people standing in them from being able to suddenly enter the detection zone. This point must be taken into account in the hazard analysis of the machine or system.
- Be sure that there are no retro-reflectors or highly reflective surfaces made of metal or ceramic in the area of the detection zone and at the height of the scanning plane. Such objects can cause measurement errors.
- In order to ensure a consistent detection height at every point of the detection zone, the scanner – and hence the scanning plane – must be placed parallel to reference section.
- If the “Restart interlock” function is included, the restart button must be located outside the detection zone in a place that is visible from the entire danger area .
- If the scanner is used without a start interlock or startup test with automatic start/restart, a startup warning (visual or acoustic) must be provided.
- The scanner must not be used as an aid for climbing. If there is any risk, a suitable diagonal protection (45°) should be set up.

Please comply with the safety notes in Chapter 3, Chapter 5.4.7 and 5.7.7.

5.1 Attachment and Dimensions

For attaching the ROTOSCAN RS4, four drill holes are located at the back of the unit. The mounting set RS4-MS is available as an accessory.

- Speeds up the mounting process by providing screws that are accessible from the front.
- Allows vertical inclinations of up to 9°, either up or down, infinitely adjustable within this range.
- Allows lateral tilting of up to approx. 9° to either side from the midpoint setting, infinitely adjustable within this range.
- Enables quick replacement of the scanner without requiring realignment.

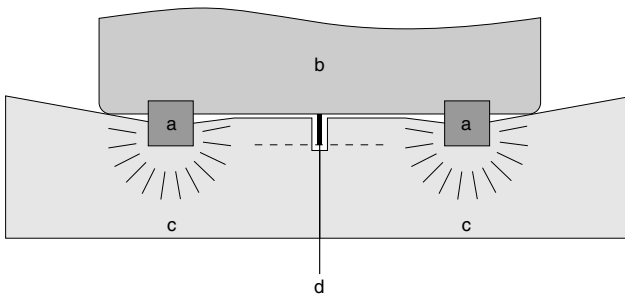
For information on which parts and dimensions are required for mounting, please refer to Chapter 14.13 and 14.14.

5.2 Mounting Adjacent Sensors

In order to prevent erroneous switch-offs caused by mutual influence between adjacent sensors, the following points must be taken into consideration:

5.2.1 Direct irradiation

To prevent the direct irradiation of outside light by a second sensor of the same type (laser light wavelength: 905 nm), a shield plate must be installed in the scanning plane. It is sufficient to place this shield at the height of the scanner's optical window and flush with the front edge of the housing.



- a = ROTOSCAN RS4
- b = Machine (view from above)
- c = Detection zones
- d = Shield plate, flush with the housing

Fig. 5.2-1: Shielding to prevent direct irradiation

5.2.2 Indirect Irradiation

If multiple laser-supported systems are in use, the mutual influence of beams reflected by objects in the area cannot be completely excluded. This effect can easily be prevented by staggering the levels at which the laser devices are mounted. A height offset of 100 mm in reference to a distance of 4 m between objects is sufficient.

Another way to implement the height offset by using diagonal positioning and inclining the scanner. If you do this, however, make certain it is not possible to crawl under the protective zone.

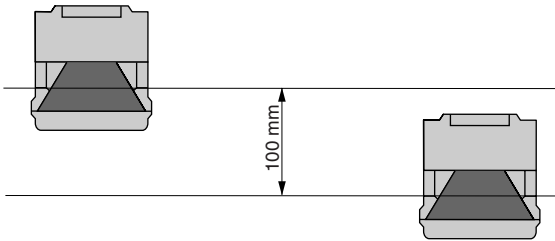


Fig. 5.2-2: Staggered mounting heights to prevent indirect irradiation

5.3 Information on Setting the Dimensions of Detection Zones

The hazards caused by machines and systems place a wide range of demands on safety distances and detection zones which must be appropriately defined.

5.3.1 Methods of Configuring Detection Zones using the PC

With its RS4soft configuration and diagnostic software, the ROTOSCAN RS4 offers various methods for setting the configurations of detection zones.

Numerical input

A separate dialogue within the user program “RS4soft” allows the right, left and front edges of the detection zone to be set using numerical values in mm.

Graphic input

A separate dialogue within the user program “RS4soft” allows the basic contours of the detection zone to be entered. The contours can be adapted infinitely to the desired size of the detection zone. The following shapes are available:

- circle
- rectangle
- polygon

In addition, the contours can be infinitely varied by:

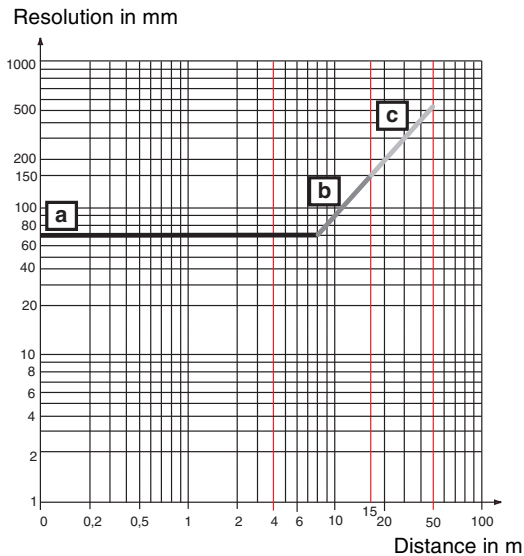
- changing
 - limiting and
 - deleting
- partial segments as desired

5.3.2 Range of the Detection Zone, Resolution

The maximum range of the detection zone S_{MAX} 4 m (including the additions) for an object with a diameter of 70 mm and a reflectance factor of 1.8 % (e.g. black corduroy). The reference point of the measurement is the axis of the rotating mirror on the scanner 64 mm behind the front edge of the scanner.

5.3.3 Range of the Warning Zone, Resolution

A maximum range of 10 meters is available for an object with a diameter of 100 mm. The maximum available range for an object with a diameter of 150 mm is 15 m. Both of these figures assume a reflectance factor of 20 %.

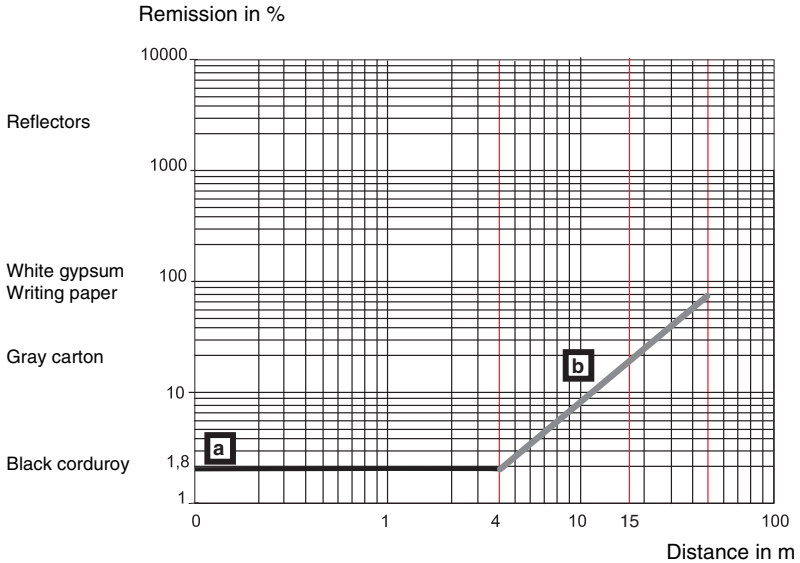


- a = Detection zone
- b = Warning zone
- c = Measurement field

Fig. 5.3-1: Detecting objects in the detection zone and in the warning zone. The reference point of the distance measurement is the axis of the rotating mirror.

5.3.4 Range of the measurement field

The maximum distance for contour measurement at a reflectance factor of 80% (white gypsum) is 50 m.



a = Detection zone
b = Measurement field

Fig. 5.3-2: Detection of objects depending on the reflectance factor. The reference point of the distance measurement is the axis of the rotating mirror.

5.3.5 Required Detection Zone Additions Z

The ROTOSCAN RS4 is equipped with a selectable dust algorithm to ensure optimum freedom from interference.

The following detection zone additions must be taken into account:

Addition Z_{SM} if dust suppression is deactivated	83 mm
Addition Z_{SM} if dust suppression is activated	83 mm (for a detection zone size < 3.5 m) 100 mm (for a detection zone size > 3.5 m)

Activation and deactivation of the function is performed by RS4soft.

If retro-reflectors or very shiny surfaces, such as polished or enameled metals or ceramics, may possibly be present in the scanning plane, the following table applies:

<p>Addition Z_{REFL} if retro-reflectors or very shiny, surface-treated materials (e.g. metals and ceramics) are present in the scanning plane</p>	<p>0 mm for reflectors more than 1.2 m behind the detection zone line</p> <p>110 mm for reflectors up to 1.2 m behind the detection zone line</p>
---	---

$$Z = Z_{SM} + Z_{REFL}$$

Z = Required detection zone addition, in mm

Z_{SM} = Measurement error of the scanner, in mm

Z_{REFL} = Addition for considering reflectors, in mm

5.4 Safeguarding Stationary Danger Zones

Please comply with the safety notes in Chapter 3.

5.4.1 The Purpose of Safeguarding

is for protection:

- to protect people when entering a danger zone
- to protect people from reaching a danger point with their extremities
- to protect objects from the danger of collision due to variable machine or part movements.

5.4.2 Mounting Position

The ROTOSCAN RS4 can be mounted either in a stationary position (e.g. on a wall or a machine) or on moving parts (e.g. machine table).

The qualified installer must ensure that the mounting position of the ROTOSCAN RS4 allows the danger zone to be monitored completely.

If a restart button is being used, make certain that the entire detection zone area can be viewed by the person pressing the button. It must not be possible to activate the button from the danger area.

Refer to the safety notes in Chapter 3.6 with regard to lateral access into the danger zone.

5.4.3 Mounting Height

According to DIN EN 999, the lowest admissible height of the scanning plane for people, as measured from the base level, is calculated according to the following formula:

$$H_{\text{MIN}} = 15 * (d - 50 \text{ mm})$$

H_{MIN} = Lowest admissible scanning plane from the base level
 d = Resolution of the scanner in mm (object size = 70 mm throughout the detection zone).

The admissible height range of the RS4 scanning plane lies between 0 mm (Presettings leg detection) and 1000 mm above the base level. If the application requires a scanning plane higher than 300 mm, or if children have access to the area, the analysis of the danger zone must consider the hazard caused by persons crawling below the scanning plane.

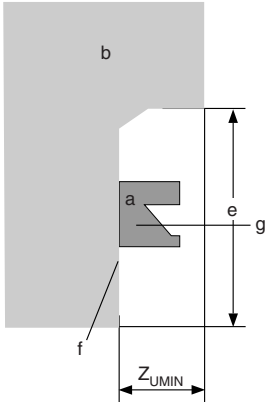
5.4.4 Recommendations for Mounting to Prevent Unmonitored Zones

Unmonitored zones can result if the scanner is mounted onto a protruding attachment or if the contour of the machine/system is varied in depth.

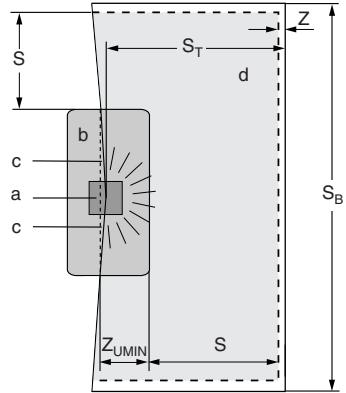
5.4.4.1 Recessed installation (undercut) under the machine table

The undercut must be at least as deep as the zone not monitored by the detection zone lateral to and in front of the scanner. The minimum depth Z_{UMIN} is 135 mm. If it is possible to recess the scanner, this is allowed up to a maximum of 40 mm; the depth of the undercut is reduced by the depth value of the recess. If the mounting system is being used, the necessary dimensions of the undercut depth must be increased accordingly (see Chapter 14.13 and 14.14). The height of the undercut must be limited to prevent people from being able to step beneath it.

Machine (side view)



Machine (view from above)



- a = ROTOSCAN RS4
- b = Machine
- c = unmonitored zone
- d = Detection zone
- e = Height of the undercut
- f = Mounting surface
- g = Scanning plane

- S = Safety distance
- S_B = Entire width of the
- S_T = detection zone
- Z = detection zone additions
- Z_{UMIN} = depth of the undercut

Fig. 5.4-1: Recessed scanner installation with undercut

The additional safeguarding required for the particular application must be taken into account.

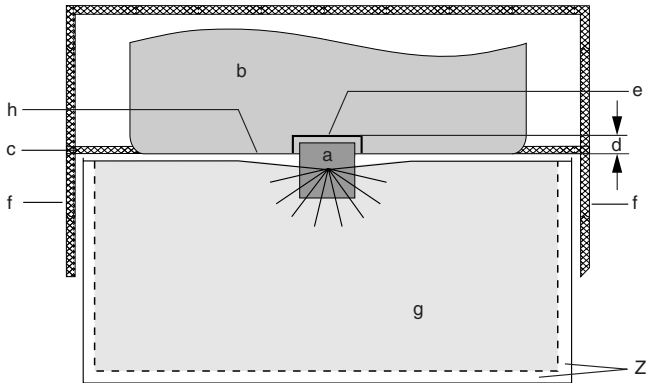
Please note that the undercut must cover any unmonitored zones.

5.4.4.2 Recessed installation within the machine contour

Furthermore, the scanner can be recessed into the contours of a machine. The recess can have a depth of up to 40 mm without the mounting system RS4-MS, or up to 65 mm with the mounting system RS4-MS. This is in reference to detection zones that cover an angle range of 180°. If it is not possible to comply with these values, or if unmonitored zones result due to the shape or movement of the machine, additional safety measures must be taken.

The effectiveness of the detection zones can be optimized by changing the depth at which the scanner is installed, or by adjusting the angle range (e.g. from 180° to 190°).

For information on how to configure the scanner in this way, please refer to the “RS4soft” user’s manual included with delivery.



- | | | | | | |
|---|---|---------------------------|---|---|---|
| a | = | ROTOSCAN RS4 | f | = | Lateral access safe guarding, if needed |
| b | = | Machine | g | = | detection zone |
| c | = | Lateral Access protection | h | = | Front machine edge |
| d | = | Maximum recessing (40 mm) | Z | = | Detection zone addition |
| e | = | Installation niche | | | |

Fig. 5.4-2: Recessed installation within the machine contour

If it is not possible to mount the ROTOSCAN RS4 directly onto the machine, it can also be positioned lateral to or across from the machine.

5.4.4.3 External mounting lateral to or across from the machine

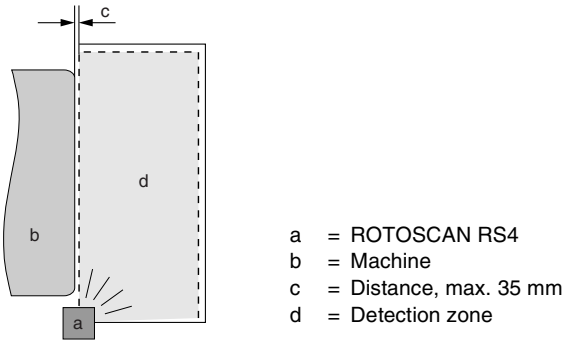


Fig. 5.4-3: Lateral external scanner mounting without an undercut

If the machine contour runs parallel to the 90° beam of the laterally placed RS4, the distance between the detection zone boundary and the machine may not exceed 35 mm.

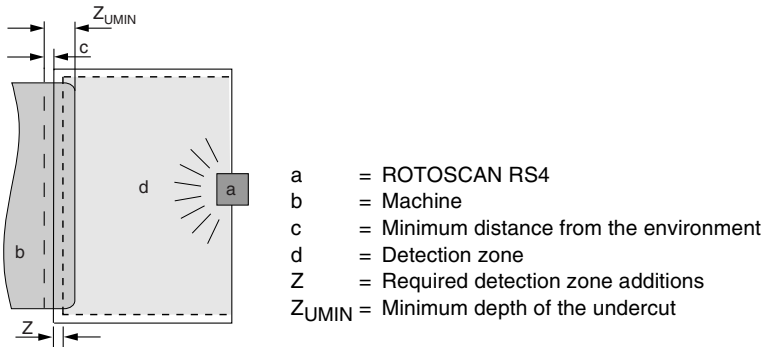


Fig. 5.4-4: Mounting the scanner across from the machine with an undercut

5.4.5 Additions

The axis of the rotating mirror (midpoint of the scanner) is of critical importance when configuring the detection zones. This axis is assigned a value of 64 mm from the front edge of the scanner when calculating detection zones.

Add **83 mm** or **100 mm** for the maximum radial measurement error Z_{SM} as described in Chapter 5.3.5 .

Add an addition Z_{REFL} as described in Chapter 5.3.5 if reflectors could be present in the area.

Please note that safety additions must principally be added to the safety distance throughout the entire detection zone.

In other words, additions may not be added to just one side or only to certain sections.

Please consult the operating instructions provided by the machine or system manufacturer.

5.4.6 System Availability

There must be a buffer distance of 83 mm between the surrounding contour and the detection zone contour (including the additions). This distance increases the up-time of the machine or system since it prevents the surrounding contour from being detected as relevant for generating a switch-off signal. If there is an undercut across from the scanner that is impossible for a person to step beneath (see Fig. 5.4-4), the depth of the undercut can be calculated according to the following formula:

$$Z_{UMIN} = Z + 83 \text{ mm} - d$$

Z_{UMIN} = Depth of the undercut, in mm

Z = Required detection zone additions, in mm

d = Resolution of the scanner ($d = 70 \text{ mm}$)

This is possible since it is absolutely certain that a person will be detected in front of the undercut .

Furthermore, the dust algorithm of the RS4 can be implemented if floating particles may be present in the area. This algorithm, which can be activated in the user program "RS4soft", prevents the machine or system from being switched off unintentionally. Please note Chapter 5.3.5.

If the danger zone analysis allows a multiple evaluation, detection errors caused by floating particles can be decreased. The number of evaluations that is decisive for the response time of the scanner (T_{SCAN}), and thus also requires a larger detection zone, can be set in the user program "RS4soft".

In the event of an error event that lasts only briefly (for example the effect of extraneous light) the scanner performs a one-time reboot. If automatic startup and restart are activated, the scanner turns the OSSDs back on after this brief error event, and after the detection zone has been free for about 25 seconds. This one-time reboot results in an additional increase in availability. This function does not have any effect if detection zone activation is faulty. If startup test, startup interlock and / or manual restart are included, they will not be removed.



Safety Notes:

Automatic startup / restart must only be used in cases where there is absolutely no possibility that the effective detection zone could be entered or bypassed in some other way. Depending on the hazard assessment, visual and / or acoustic startup warnings should be provided.

If parameters are set for the function “Manual restart”, the required enable from the startup/restart button affects all detection zones and is independent of any detection zone changeover. If the current detection zone is manually enabled, this enable also applies even if the system switches to another detection zone and this detection zone becomes free! If startup/restart interlock is in effect in the current detection zone, it is also in effect for the other detection zone to which the system switches even if this detection zone is free.

5.4.7 Restart Interlock

The ROTOSCAN RS4 is equipped with a restart interlock function. You can select or deselect this function as needed to connected restarting of the machine to a manual approval. It affects all detection zones and does not depend on any detection zone changeovers. For information on how to configure the scanner appropriately, please refer to RS4soft (Section: “Safety-relevant parameters” folder)

The restart button must be mounted so that

- the entire danger zone (or detection zone area) can be viewed from the operating position.
- it is not possible to directly step or reach into the danger zone or danger point from the operating position.

The button refer to the areas to be enabled in a easily understandable manner.

Please comply with the safety notes in Chapter 3 and 5.4.6.

5.4.8 Calculating the Detection Zone Dimensions for Safeguarding an Area

According to **IEC 61496-3** and **DIN EN 999**, the following formulas apply for calculating the safety distance and the minimum depth of the detection zone when the direction of approach runs parallel to the detection zone:

$$S = (K \times T) + C$$
$$C = 1200 \text{ mm} - 0.4 H$$

$$C_{\text{MIN}} = 850 \text{ mm}$$
$$H_{\text{MIN}} = 15 (d - 50 \text{ mm})$$
$$H_{\text{MAX}} = 1000 \text{ mm}$$

- S = Safety distance, minimum distance from the danger zone to the point of detection, to the plane of detection, or to the detection zone, in mm
- K = Approach speed of a person or a person's body parts (1600 mm/s), in mm/s
- T = Lag time of the entire system (response time and braking time until standstill), in s
- C = Safety-related constant to consider entry into the danger zone before the protective device is triggered, in mm
- C_{MIN} = Minimum value of the safety-related constant (850 mm), in mm
- H = Height of the scanning plane from the reference point, in mm
- H_{MIN} = Minimum height of the scanning plane from the reference plane, in mm
- H_{MAX} = Minimum height of the scanning plane from the reference plane, in mm
- d = Resolution of the scanner (70 mm throughout the detection zone), in mm

5.4.8.1 Additions and Minimum Depth of Detection Zone

The sum of the system-specific and application-specific detection zone additions (see Chapter 5.3.5) is calculated according to the following formula:

$$Z_{TOT} = Z_{SM} + Z_{REFL} + Z_{AU}$$

Z_{TOT} = Sum of the system-specific and application-specific detection zone additions, in mm

Z_{SM} = Scanner measurement error, in mm

Z_{REFL} = Addition of the reflectors taken into account, in mm

Z_{AU} = Addition for application-specific undercut, in mm

The depth of the detection zone, with reference to the direct distance between the danger zone and the detection point or line, is calculated according to the following formula:

$$S_T = (K \times (T_{SCAN} + T_{MACH} + (T_{LAG} \times L_{LAG}))) + C + Z_{TOT}$$

S_T = Depth of detection zone, distance from danger area to detection point or line, including system and application-specific additions, in mm

K = Approach speed of a person or a person's body parts (1600 mm/s), in mm/s

T_{SCAN} = Response time of the scanner, in s

T_{MACH} = Response time of the machine or system, in s

T_{LAG} = Lag time of the entire system, in s

L_{LAG} = Factor for increase in lag time

C = Safety-related constant, in mm

5.4.8.2 Maximum range of detection zone

$$S_{MAX} = \sqrt{S_T^2 + S_{BDIFF}^2}$$

$$S_{BDIFF} = G_{BDIFF} + S + Z$$

S_{MAX} = Maximum range of the detection zone considering the diagonals, in mm

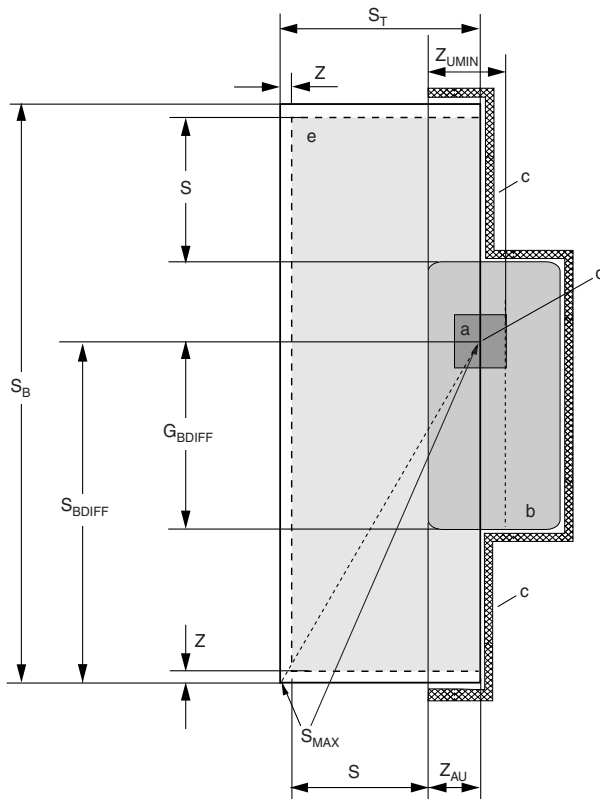
S_T = Depth of the detection zone, in mm

S_{BDIFF} = Largest width of the detection zone between the axis of the rotating mirror and the outer edge of the detection zone, in mm

G_{BDIFF} = Largest width of the danger zone between the axis of the rotating mirror and the boundary of the danger zone, in mm

S = Safety distance, minimum distance from the danger zone to the point of detection, to the plane of detection, or to the detection zone, in mm

Z = Required detection zone additions, in mm



- a = ROTOSCAN RS4-4
- b = Dangerous machine/danger zone
- c = Safety fence to prevent stepping behind
- d = Axis of the rotating mirror
- e = Detection zone
- G_{BDIFF} = Largest width of the hazardous zone
- S = Safety distance
- S_B = Entire width of the detection zone
- S_{BDIFF} = Largest width of the detection zone
- S_{MAX} = Maximum geometrical distance
- S_T = Depth of the detection zone
- Z_{AU} = Detection zone addition, application-specific
- Z = Detection zone additions
- Z_{UMIN} = Undercut

Fig. 5.4-5: Considering the maximum measurement distance when safeguarding an area

5.4.8.3 Sample calculation of the depth of a detection zone

This example is based on the following application data (see 5.4-5):

Largest width between the axis of the rotating mirror and the boundary of the danger zone	G _{BDIFF}	700 mm
Access speed	K	1600 mm/s (constant)
Response time of the RS4-4 (adjustable)	T _{SCAN}	0.08 s
Response time of the machine or system	T _{MACH}	0.1 s
Stopping time or lag time of the machine or system	T _{LAG}	0.5 s (time for braking the dangerous movement until standstill)
Factor for increase in lag time	L _{LAG}	1.1 (fixed addition to account for increased lag time)
Addition for system-specific measurement error	Z _{SM}	83 mm (when dust algorithm is switched off)
Addition caused by the mounting position that is selected	Z _{AU}	125 mm (distance between the front edge of the undercut to the beam axis of the scanner)
Height of the sensor scanning plane	H	300 mm
Safety-related constant	C	1200 mm – 0.4 * Height H = 1080 mm

The formula

$$S = (K \times (T_{SCAN} + T_{MACH} + (T_{LAG} \times L_{LAG}))) + C$$

results in a safety distance of:

$$S = (1600 \text{ mm/s} \times (0.08 \text{ s} + 0.1 \text{ s} + (0.5 \text{ s} \times 1.1))) + 1080 \text{ mm} = 2248 \text{ mm}$$

The formula

$$S_T = S + Z_{SM} + Z_{AU}$$

results in the detection zone depth:

$$S_T = 2248 \text{ mm} + 83 \text{ mm} + 125 \text{ mm} = 2456 \text{ mm}$$

5.4.8.4 Sample calculation of a maximum range of a detection zone

The formulas:

$$S_{MAX} = \sqrt{S_T^2 + S_{BDIFF}^2}$$

$$S_{BDIFF} = G_{BDIFF} + S + Z_{SM}$$

yield, under consideration of the width of the danger zone results in the maximum distance to be monitored:

$$S_{MAX} = \sqrt{2456\text{mm}^2 + 3031\text{mm}^2}$$

$$S_{BDIFF} = 700\text{mm} + 2248\text{mm} + 83\text{mm} = 3031\text{mm}$$

$$S_{MAX} = 3901\text{mm}$$

5.4.8.5 Sample calculation of an undercut

This example is based on the following application data. If the scanner is mounted across from the machine (see Fig. 5.4-4), the undercut dimension can be reduced by $d = 70\text{mm}$.

The formula

$$Z_{UMIN} = Z + 83\text{mm} - d$$

results in a minimum undercut:

$$Z_{UMIN} = 83\text{mm} + 83\text{mm} - 70\text{mm} = 96\text{mm}$$

It is not allowed for a person to be able to step beneath the undercut.

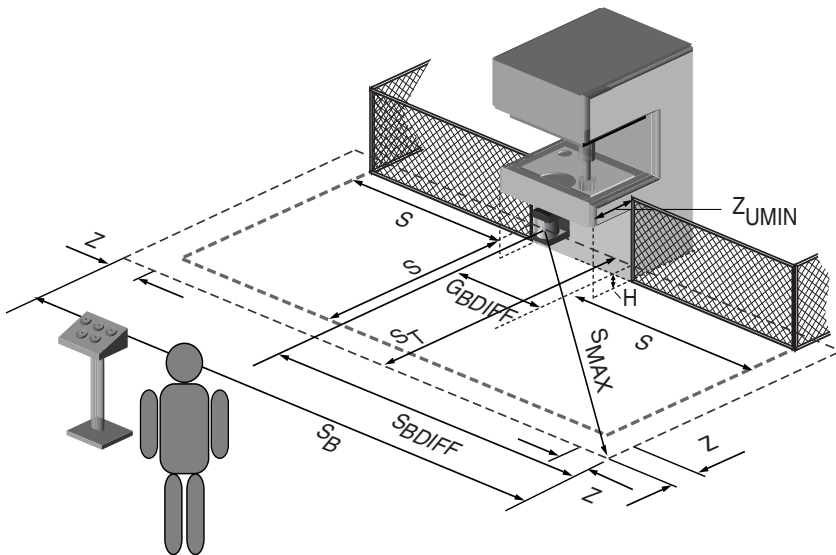


Fig. 5.4-6: The undercut

5.5 Access protection

Please have regard to the General Notes on Safety in Chapter 3.

5.5.1 Object of protection

The object of protection is the safeguarding

- of individuals when they access a danger zone.

The ROTOSCAN RS4-4E will detect the passage of individuals and the intrusion of an entire human body into the scanning field of the laser scanner.

5.5.2 Installation position

Access protection is based on passage monitoring. This is a suitable system when the access to a machine or to a hazardous zone can be precisely defined in structural terms, and there is no other unprotected access to the area. In addition, the danger area must be open to inspection, and the button for manual triggering of the restart interlock must be situated outside the area. It is best if the laser scanner is firmly installed above the passage in question, in vertical alignment and in such a way that it cannot be manipulated. Care must be taken to ensure that the positioning of the laser scanner ROTOSCAN RS4-4E does not leave any areas through which a person might slip through without being detected. The distance of the scanning field limiting the passage and the boundaries of the detection zone must be defined in such a way that no gaps measuring more than 150 mm can arise.

5.5.3 Safety-relevant settings, and calculation of the safety distance

To safeguard the protective equipment against inadvertent misadjustment or manipulation, the detection zones of the ROTOSCAN RS4-4E must be defined on the basis of a reference boundary. In addition, the response time must be defined as 80 ms and the restart interlock must be set. To enable the system to recognise an entire human body, the laser scanner must have a resolution of 150 mm. These safety-related settings will be automatically enabled in the RS4soft configuration and diagnosis software when the presetting "Passage monitoring" has been selected.

For effective passage monitoring, a safety distance S must be observed between the detection zone of the laser scanner and the danger zone. The ROTOSCAN RS4-4E can fulfil its protective function only if it has been installed and positioned in such a way as to allow for an adequate safety distance. The safety distance ensures that no body part whatever can reach the danger point until the hazardous movement of the machine has come to a complete standstill.

The safety distance for an access protection system may be calculated, based on EN 999, by means of the following formula:

$$S = K \times T + C$$

S = Safety distance in mm

K = Approach velocity in mm/s here = 1600 mm/s

T = Overall time of delay in seconds, a total consisting of:

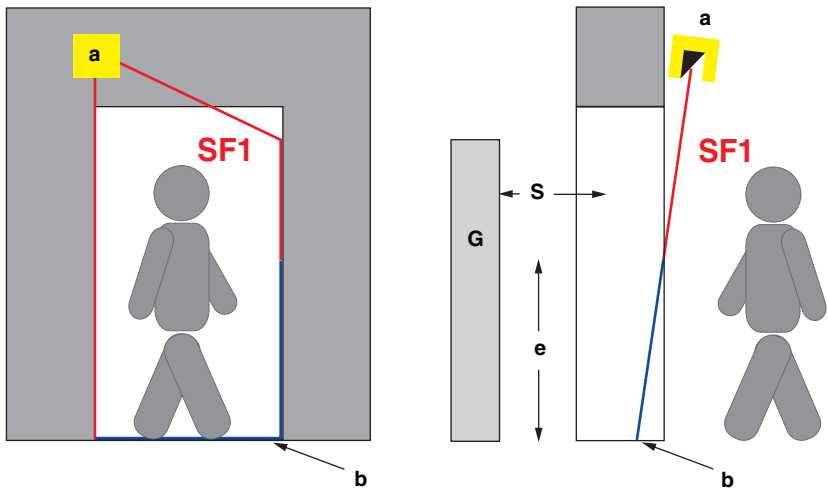
Response time of the laser scanner here = 80 ms

Overtravel time of the machine including the controls Based on measurement of overtravel time

C = Added margin on account of the possibility of manual intrusion here = 850 mm

Please also have regard, in this connection, to the diagrams given in this chapter.

5.5.4 Definition of the reference boundary



- a = ROTOSCAN RS4-4E
- b = Reference boundary of the detection zone
- e = Height of frame with reference boundary; recommended value: $e > 1200$ mm
- SF1 = Detection zone 1, enabled
- S = Safety distance
- G = Danger zone

Fig. 5.5-1: Access protection by passage monitoring with system check of a reference boundary

The reference boundary must cover at least two sides of the detection zone. The detection zone itself must be defined in such a way that no gaps can arise through which a person could pass through the passage without being detected. The reference boundary is defined with reference to the non-moving parts of the passage. These will then be constantly monitored by the laser scanner, so that any individuals intruding or other manipulative intervention will be detected beyond the possibility of doubt. In defining the reference boundary, please also have regard to the indications given in the Operating Instructions for the RS4soft configuration and diagnosis software.

5.6 Protecting danger points

Please have regard to the General Notes on Safety in Chapter 3.

5.6.1 Object of protection

The object of protection is the safeguarding

- of individuals who work with a machine or spend time in the danger zone associated with it.

The ROTOSCAN RS4-4E will detect the body parts of individuals and the intrusion of these body parts into the scanning field of the laser scanner. In this operating mode, hand and arm protection is effectively realised.

5.6.2 Installation position

Safeguarding of danger points on the basis of hand and arm protection is a suitable method if the machine operator, in close proximity to the danger zone, needs to halt the hazardous movement of the machine or to coordinate the handling of workpieces or their removal from the machine. It is best if the laser scanner is firmly installed above the danger zone, in such a way that it cannot be manipulated. The health and safety officer must ensure that the installation position of the ROTOSCAN RS4-4E does not leave any areas free through which manual intrusion could be effected. If appropriate, additional protective facilities should be installed to exclude any possibility of the operator's reaching over or around or getting behind the barrier. To prevent the latter, the distance from the scanning field to the machine table must not be more than 75 mm. This can be guaranteed if suitable screens are installed for the monitoring of the reference boundary (see the illustrations in this chapter).

5.6.3 Safety-related settings, and calculation of the safety distance

In order to safeguard the protective equipment against inadvertent misadjustment and manipulation, the detection zones of the ROTOSCAN RS4-4E must be defined on the basis of a reference boundary. To make it possible to recognise the hand or arm of a person, the laser scanner must have a resolution of 30 or 40 mm. These safety-related values will be automatically set in the RS4soft configuration and diagnosis software when the presetting "Hand protection" or "Arm protection" has been selected. At the same time the detection zone limits will be limited to 1.60 m or 2.20 m, and cannot be extended beyond this.

To safeguard the danger point, a safety distance S must be observed between the detection zone of the laser scanner and the danger zone. The ROTOSCAN RS4-4E can fulfil its protective function only if it has been installed and positioned in such a way as to allow for an adequate safety distance. The safety distance ensures that no body part whatever can reach the danger point until the hazardous movement of the machine has come to a complete standstill.

The safety distance S when safeguarding a danger point may be calculated, based on EN 999, by means of the following formula:

$$S = K \times T + C$$

S = Safety distance in mm

K = Approach velocity in mm/s

At a close distance of 500 mm, a velocity of 2000 mm/s should be assumed. If the calculation involves a distance in excess of 500 mm, K may be taken to be 1600 mm/s. But in this case the safety distance is subject to a minimum value of 500 mm.

T = Overall time of delay in seconds, a total consisting of:

Response time of the laser scanner	Adjustable, max. 200 ms
------------------------------------	-------------------------

Overtravel time of the machine including the controls	Based on measurement of overtravel time
---	---

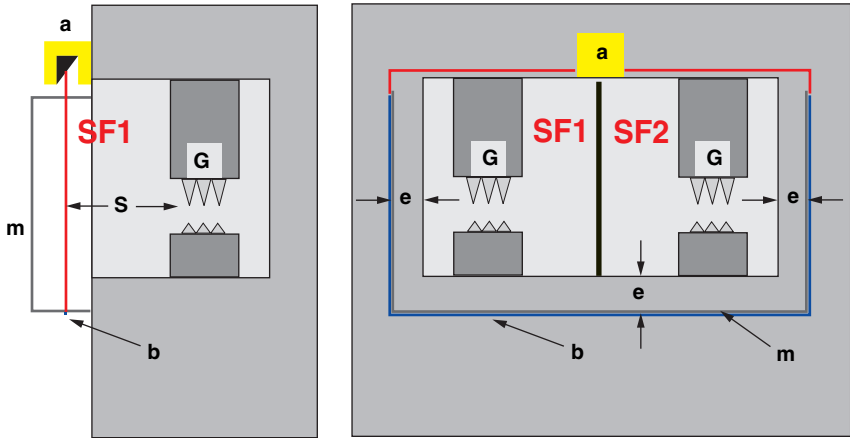
C = $8 \times (d-14)$ in mm

Added margin dependent on the depth of penetration of the detection zone, based on the resolution of the laser scanner: C(30mm) = 128 mm, C(40mm) = 208 mm

d = The resolution to which the laser scanner has been set Here = 30 mm or 40 mm

In this connection please also have regard to the illustrations given in this chapter.

5.6.4 Defining the reference boundary



- | | |
|---|----------------------------------|
| a = ROTOSCAN RS4-4E | SF1 = Detection zone 1, enabled |
| b = Reference boundary of the detection zone | SF2 = Detection zone 2, disabled |
| S = Safety distance | G = Danger point |
| m = Screen | |
| e = Distance from the screen to the intrusion zone of the danger point, $e > 150$ mm (tolerance zone); the reference boundary must be defined with reference to the screen. | |

Fig. 5.6-1: Safeguarding of danger point based on hand and arm protection with monitoring of a reference boundary

The reference boundary must cover at least two sides of the detection zone. The detection zone itself must be defined in such a way that no gaps can arise through which or over which a person could reach without being detected. The detection zone must also provide safeguards against a person getting behind the barrier. This can be very effectively managed by screening the sides of the danger zone. The reference boundary should be defined with reference to the non-moving parts of the screen arrangement. The detection zone must be defined as large enough to ensure an overlapping greater than the tolerance zone of the reference boundary. The detection zone will then be constantly monitored so that any body parts intruding or other manipulative intervention will be detected beyond the possibility of doubt. In defining the reference boundary, please also have regard to the indications given in the Operating Instructions for the RS4soft configuration and diagnosis software.

5.7 Safeguarding Mobile Machines

Please comply with the safety notes in Chapter 3.

5.7.1 The Purpose of Safeguarding

is for protection:

- to protect people when entering variable danger zones
- to protect objects located in the vehicle path
- to protect the automatic guided vehicle and its load

5.7.2 Mounting Position

For the purpose of safeguarding the path of a vehicle, the ROTOSCAN RS4-4 is mounted on the front of a vehicle (in each direction of travel), preferably in the center.

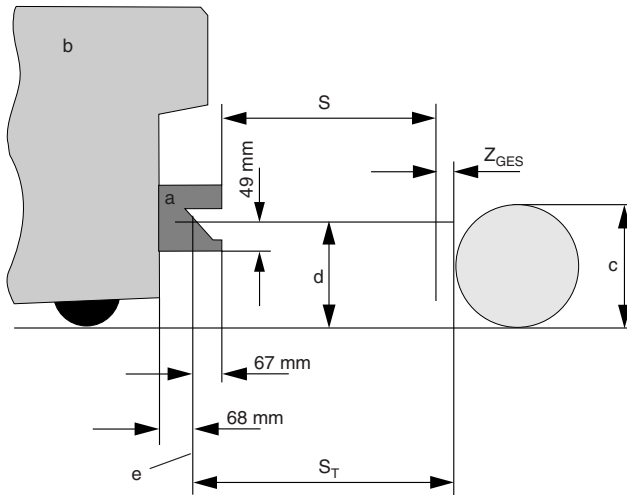
The scanner, and hence the beam axis, must be aligned horizontally in order to achieve a consistent scanning height.

Please comply with the safety notes in Chapter 3.7.

5.7.3 Mounting Height

As a rule, the scanner should be mounted as low as possible in order to prevent people from crawling beneath the detection zone. This specification is limited due to such factors as uneven floors or the deflection of the springs in the AGV.

The maximum mounting height must be selected so that an object (cylinder with a diameter of 200 mm in the prone position) is reliably detected (see DIN EN 1525). The detection must be tested at the position of maximum depth within the detection zone. For AGV applications, sufficient resolution of detection is achieved when an object (upright cylinder) with a diameter of 70 mm can be detected throughout the detection zone.



- a = ROTOSCAN RS4-4
- b = AGV
- c = Height of the test piece, max. 200 mm
- d = Recommended maximum height of the scanning plane: 150 mm
- e = Axis of the rotating mirror
- S = Safety distance
- S_T = Depth of the detection zone
- Z_{TOT} = Detection zone additions in the direction of travel

Fig. 5.7-1: Mounting height on an AGV

Depending on the application, further additions may be necessary. Additional information is available in Chapter 5.7.5.

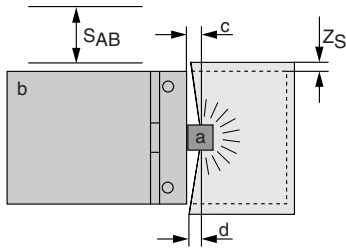
5.7.4 Recommendations for Mounting to Prevent Unmonitored Zones

The creation of unmonitored zones is dependent upon the following factors:

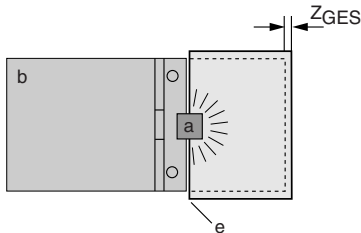
- the vehicle width
- the design of the vehicle (e.g. attachments, shape)
- the position of the scanner
- the installation depth
- the selected angle range.

If the detection zone of a ROTOSCAN RS4-4 mounted on an AGV does not cover the entire front of the vehicle, you can prevent the creation of unmonitored zones by changing the installation depth of the scanner or by adjusting the angle range (from 180° to 190°).

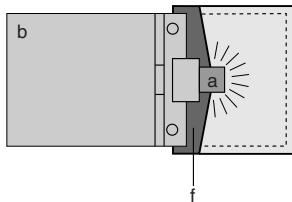
If this is not possible due to constructional limitations, additional safety measures such as mechanical cover panels, switch strips or bumpers must be implemented. Please comply with the safety notes in Chapter 3.7.



**ROTOSCAN RS4-4
mounted on the front of a vehicle**



**ROTOSCAN RS4-4
recessed into the front of a vehicle**



**ROTOSCAN RS4-4
mounted on a protruding vehicle**

- a = ROTOSCAN RS4-4
- b = Automatic guided vehicle
- c = The distance from the back wall of the scanner to the axis of the rotating mirror is 68 mm.
- d = The 190° detection zone enables an expanded monitored range.
- e = The detection zone is limited by the scanner recess at the front of the vehicle (180°).
- f = The protruding attachment results in the creation of unmonitored zones.
- S_{AB} = Lateral safety distance (between the edge of the roadway and the boundary of the detection zone).
- Z_{TOT} = Sum of the system- and application-specific additions in the direction of travel
- Z_S = Sum of the system- and application-specific additions to the side

Fig. 5.7-2: Three possibilities for mounting the ROTOSCAN RS4-4 onto an AGV

5.7.5 Additions

The axis of the rotating mirror (midpoint of the scanner) is of critical importance when configuring the detection zones. This axis is assigned a value of 64 mm from the front edge of the scanner when calculating detection zones.

Add **83 mm** or **100 mm** for the maximum radial measurement error Z_{SM} as described in Chapter 5.3.5 .

Add an addition Z_{REFL} as described in Chapter 5.3.5 if reflectors could be present in the area.

Without information from the AGV manufacturer, take into account the wear and tear on the brakes by adding an addition L_{STOP} of at least 10 % of the braking distance, as long as this is not already included in the braking distance S_{STOP} .

If there is a very small distance between the bottom of the AGV and the floor, the detection difference between the leg and the toes must be considered in the calculation. For AGVs with a floor clearance of less than 120 mm, an addition Z_{AFLR} must be added. This refers only to the travel of direction.

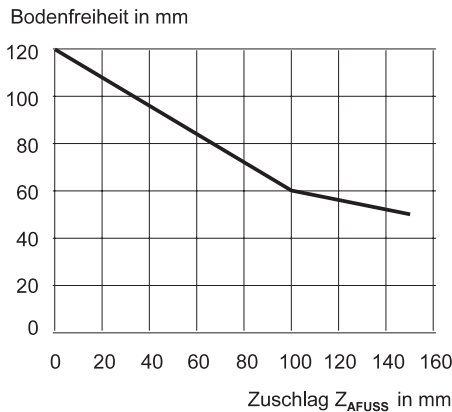


Fig. 5.7-3: Diagram for calculating the addition to compensate for inadequate AGV floor clearance

5.7.6 System Availability

There must be a buffer distance of 83 mm between the surrounding contour and the detection zone contour (including the additions). This distance increases the up-time of the AGV, since it prevents the surrounding contour from being detected as relevant for generating a switch-off signal due to a measurement error.

Furthermore, the dust algorithm of the RS4-4 can be implemented if floating particles may be present in the area. This algorithm can be activated in the user program "RS4soft" and prevents the AGV from being switched off unintentionally. Please note Chapter 5.3.5.

If the danger zone analysis allows a multiple evaluation, detection errors caused by floating particles can be decreased. The number of evaluations that is decisive for the response time of the scanner (T_{SCAN}), and thus also requires a larger detection zone, can be set in the user program "RS4soft".

In the event of an error event that lasts only briefly (for example the effect of extraneous light) the scanner performs a one-time reboot. If automatic startup and restart are activated, the scanner turns the OSSDs back on after this brief error event, and after the detection zone has been free for about 25 seconds. This one-time reboot results in an additional increase in availability. This function does not have any effect if detection zone activation is faulty. If startup test, startup interlock and / or manual restart are included, they will not be removed.



Safety Notes:

Automatic startup / restart must only be used in cases where there is absolutely no possibility that the effective detection zone could be entered or bypassed in some other way. Depending on the hazard assessment, visual and / or acoustic startup warnings should be provided.

If parameters are set for the function "Manual restart", the required enable from the startup/restart button affects all detection zones and is independent of any detection zone changeover. If the current detection zone is manually enabled, this enable also applies even if the system switches to another detection zone and this detection zone becomes free! If startup/restart interlock is in effect in the current detection zone, it is also in effect for the other detection zone to which the system switches even if this detection zone is free.

5.7.7 Restart

At least 2 seconds must elapse following the release of a violated detection zone before the AGV is allowed to start up again (in accordance with DIN EN 1525). The restart can be initiated either manually or automatically. In case of automatic restart, the delay time of up to 10 s can be set in advance using the program "RS4soft". If a restart button is provided, it must be mounted outside the danger zone at a position from which the entire danger zone can be viewed. The areas that will be released must also be referred to in an easily understandable manner. The startup/restart interlock affects all detection zones and does not depend on any detection zone changeovers.

Please comply with the safety notes in Chapter 3 and Chapter 5.7.6.

5.7.8 Calculating the Dimensions of the Detection Zone of an AGV Application

Following are the specifications and calculation examples for the mobile safeguarding of automatic guided vehicles..

According to **IEC 61496-3**, the following formulas apply for calculating the safety distance:

$$S = (V_{MAX} \times T) + S_{STOP}$$

V_{MAXAGV} = Maximum speed of the AGV, in mm/s

T = Response time of the scanner and the AGV, in s

S_{STOP} = Braking distance of the AGV until standstill, in mm

5.7.8.1 Direction-Related Minimum Depth of the Detection Zone and Additions

The depth of the detection zone in the direction of travel, with respect to the distance between the edge of the roadway and the boundary of the detection zone, is calculated according to the following formula:

$$S_T = V_{MAXAGV} \times (T_{SCAN} + T_{FTS}) + (S_{STOP} \times L_{STOP}) + Z_{TOT}$$

S_T = Depth of the detection zone in the direction of travel, in mm

V_{MAXAGV} = Maximum speed of the AGV, in mm/s

T_{SCAN} = Response time of the scanner, in s

T_{SCAN} = Response time of the AGV, in s

L_{STOP} = Factor for wear and tear on the brakes

Z_{TOT} = Total of the system- and application-specific additions in the direction of travel in mm

$$Z_{TOT} = Z_{SM} + Z_{REFL} + Z_{AFLR} + Z_{AU}$$

Z_{SM} = Scanner measurement error, in mm

Z_{REFL} = Addition of the reflectors taken into account, in mm

Z_{AFLR} = Addition for inadequate floor clearance by the AGV, in mm

Z_{AU} = Application-specific addition, in mm

5.7.8.2 Maximum range of detection zone

$$S_{MAX} = \sqrt{S_T^2 + S_{BDIFF}^2}$$

$$S_{BDIFF} = G_{BDIFF} + Z_S$$

S_{MAX} = Maximum range of the detection zone, in mm

S_T = Depth of the detection zone in the direction of travel, in mm

S_{BDIFF} = Largest width of the detection zone, in mm

G_{BDIFF} = Largest width of the danger zone, in mm

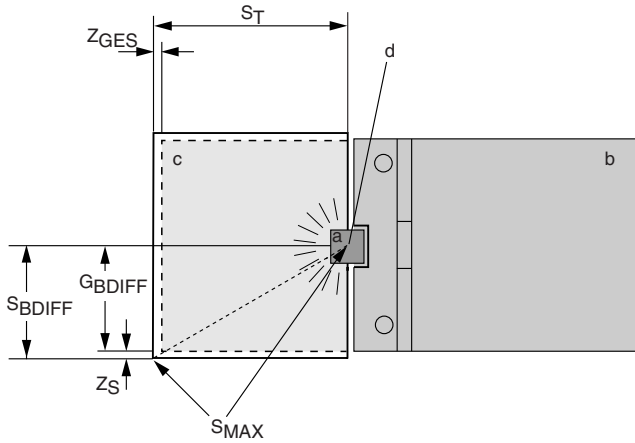
Z_S = Sum of the system-specific and application-specific additions to the side, in mm

$$Z_S = Z_{SM} + Z_{REFL} + Z_{AU}$$

Z_{SM} = Scanner measurement error, in mm

Z_{REFL} = Addition of the reflectors taken into account, in mm
(see Chapter 5.3.5)

Z_{AU} = Application-specific addition, in mm



- a = ROTOSCAN RS4-4
- b = AGV
- c = Detection zone
- d = Axis of the rotating mirror
- GBDIFF= Largest width of the hazardous zone
- SBDIFF= Largest width of the detection zone
- SMAX = Geometrical maximum distances
- ST = Depth of the detection zone
- ZGES = Total of the additions in the direction of travel
- ZS = Total of the additions to the side

Fig. 5.7-4: Considering the maximum measurement distance for safeguarding AGVs

In accordance with DIN EN 1525, a minimum safety distance of 0.5 m width between the vehicle and its environment must be maintained.

5.7.8.3 Sample calculation of the depth of a detection zone

This example is based on the following typical application data (without access against the direction of travel and without retro-reflectors):

Largest width of the danger zone from the axis of the rotating mirror = G_{BDIFF}	1400 mm
Maximum speed = V_{MAXAGV}	1800 mm/s
Response time RS4-4 (selectable) = T_{SCAN}	0.08 s
Response time of AGV control = T_{AGV}	0.1 s
Braking distance = S_{STOP}	1900 mm
Factor for wear and tear on the brakes = L_{STOP}	1.1 (fixed addition to account for wear and tear on the brakes)
Measurement error = Z_{SM}	83 mm
Distance between AGV and floor = Z_{AFLR}	90 mm (results in an addition of 50 mm according to Fig. 18 5.7-3 for calculating the addition for inadequate floor clearance)

The formula

$$S = V_{MAXAGV} \times (T_{SCAN} + T_{FTS}) + (S_{STOP} \times L_{STOP})$$

results in a safety distance of:

$$S = 1800 \text{ mm/s} \times (0.08 \text{ s} + 0.1 \text{ s}) + (1900 \text{ mm} \times 1.1) = 2414 \text{ mm}$$

The formula

$$S_T = S + Z_{SM} + Z_{REFL} + Z_{AFLR} + Z_{AU}$$

results in the following required depth of the detection zone in the direction of travel:

$$S_T = 2414 \text{ mm} + 83 \text{ mm} + 0 \text{ mm} + 50 \text{ mm} + 0 \text{ mm} = 2547 \text{ mm}$$

5.7.8.4 Sample calculation of a maximum range of a detection zone

The formula

$$S_{MAX} = \sqrt{S_T^2 + S_{BDIFF}^2}$$

$$S_{BDIFF} = G_{BDIFF} + Z_S$$

yields, under consideration of the width of the danger zone results in the maximum distance to be monitored:

$$S_{MAX} = \sqrt{2547 \text{ mm}^2 + 1483 \text{ mm}^2}$$

$$S_{BDIFF} = 1400 \text{ mm} + 83 \text{ mm} = 1483 \text{ mm}$$

$$S_{MAX} = 2947 \text{ mm}$$

6 Information on Detection Zone and Warning Zone Changeovers

In the course of using machines to their optimum capacity, alternating cycles of material insertion and processing often necessitate the creation of variable danger zones. Due to their very nature, AGV applications also necessarily comprise various danger zones. If it is possible for a person to gain access to these danger areas, it is necessary to implement a safeguarding system that adapts to the changing conditions. For this purpose, the ROTOSCAN RS4 provides four zone pairs, each consisting of one detection zone and one warning zone, which the user can select among and freely configure.

A convenient user program called "RS4soft" is available to determine the required zone pair contours.

To activate the zone pairs, apply 24 V to the corresponding inputs provided at connector X1 on the scanner. Please refer to Chapter 7.2 and Chapter 9 for more detailed information on wiring the scanner.

Note the following points if the ROTOSCAN RS4 is going to be started up again or if you are going to switch among different zone pairs:

- When selecting the zone pair for the startup, pay careful attention to the danger zones that are valid at the moment of startup.
- Always switch on the second zone pair before switching off the first zone pair.
- The changeover must take place within 1 s.
- At no time during the switching process may all of the zone pairs be deactivated simultaneously.
- Only one zone pair may be active at any one time, except during the changeover process.
- The sequence of the activated monitoring fields must ensure that the application-specific minimum detection zone size is met at all times.
- It must be impossible for changeover signals to change simultaneously as the result of a systematic error. This is achieved by using independent circuits (e.g. separately actuated binary switches) under consideration of the switching behavior described in this chapter.

Please see the assignments of connections and/or interfaces in Chapter 9.5 and in the safety notes in Chapter 3.

6.1 Sequence of a Zone Pair Changeover from FP 2 to FP 4 (Example)

- Zone pair 2 (X1-6) is the active zone pair.
- Zone pair 4 (X1-8) is then activated in addition.
- In this state, both zone pair monitors are switched on.
- Zone pair 2 (X1-6) must be switched off within one second.
- Zone pair 4 (X1-8) is now active.

6.2 Practical AGV Application (Example)

The following example shows the sequence of zone pair changeovers for an efficiently implemented AGV under consideration of the ambient conditions. Please observe the particular danger zone analysis for each detection zone in combination with the corresponding route segments. Also note the safe sequences of changeovers and starts. For information on programming the startup detection zones (detection zones enabled for starting up the scanner) and on determining the sequence in which the detection zones are to be activated, please see the “RS4soft” user’s manual.

Activating an FP	AGV position	Deactivating an FP	AGV control of position
FP1	Straight section		High speed
FP2	2 m before the curve	FP1	Low speed
FP3	Beginning of the curve	FP2	Steering lock - curve
FP1	Straight section	FP3	Steering lock - straight High speed

FP = 1 x detection zone + 1 x warning zone

Table 6.2-1: Practical AGV Application

If the AGV is controlled by a PLC, for instance, which corresponds to Cat. 3 or higher according to DIN EN 954-1, the previous zone pair (FP) can be deactivated immediately after the next zone pair has been activated, with no time delay.

This results in a faster switching sequence.

The applicable safety guidelines and standards as well as the operating instructions for the systems must be strictly complied with.

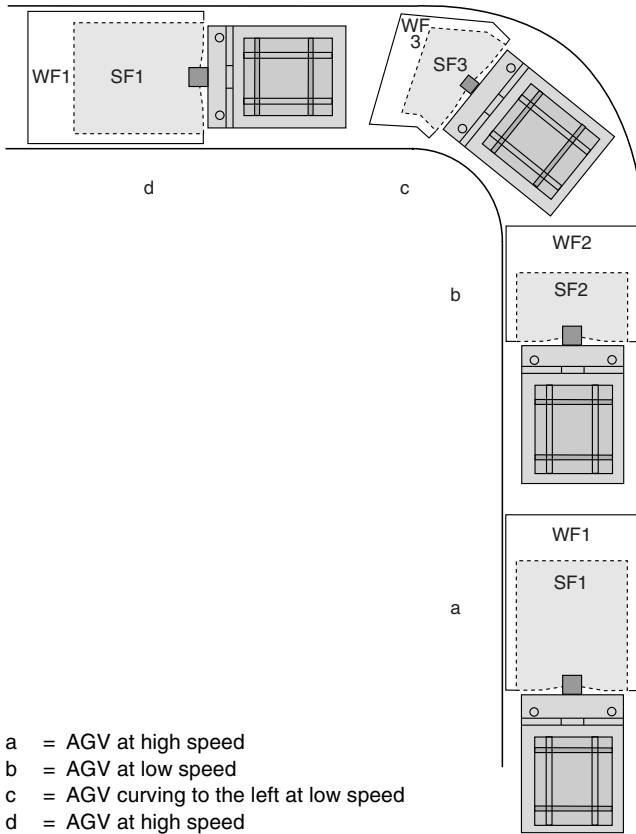


Fig. 6.2-1: Example of a zone pair changeover for an AGV on a curved route

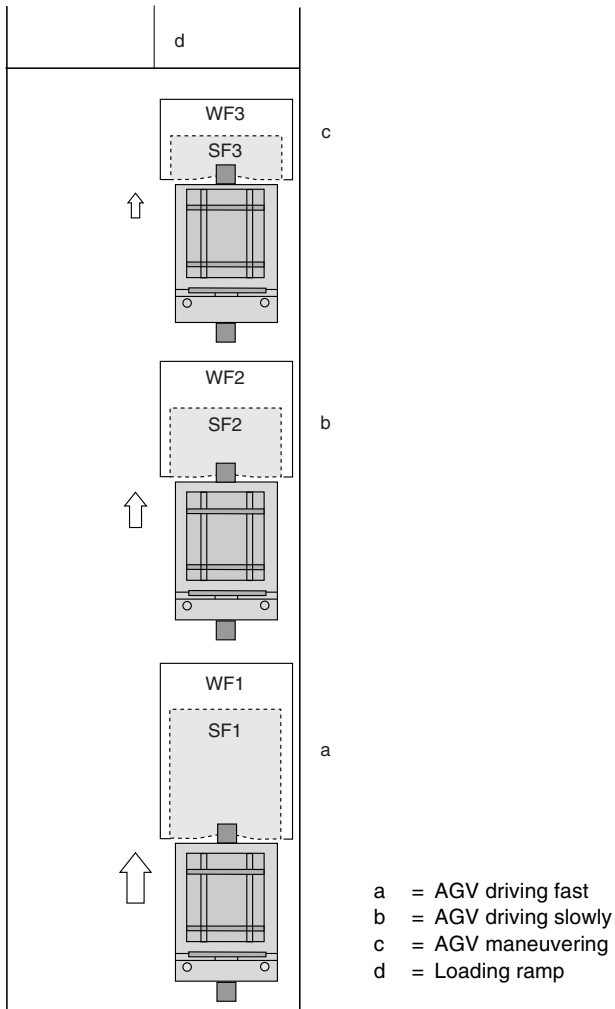


Fig. 6.2-2: Example of zone pair changeover with combined with reducing speed of the AGV

7 Functions of the ROTOSCAN RS4-4 / RS4-4E

The ROTOSCAN RS4-4 / RS4-4E is equipped with the X1 and X2 interfaces. The following functions are available through them:

7.1 Restart

Depending on the operating state, the restart input X1-2 has several functions:

- Enables the restart interlock following the interruption of a detection zone
- Enables the start interlock following a system start
- Restarts after a device error has been eliminated
- Recognizes a defined enable signal
 - after a device error
 - after a detection zone interruption for enabling the restart interlock

To activate the functions, apply 24 V to input X1-2. In the meantime, the safety outputs OSSD 1 and OSSD 2 are switched off; the indicator at the scanner (LED3) is lit up red. The duration of the signal must be between 0.12 s and 5 s.

The restart input X1-2 must be connected to an external, permanently installed button. X1-2 must not be connected with the remaining controls in order to prevent an unintended release with a Restart pulse under some circumstances.

Force-guided, normally closed contacts can be monitored in the restart circuit (relay monitoring).

Please note the Chapter 5 (planning and mounting information) and 9.1 (electrical power supply).

7.2 Channels for Zone Pair Changeovers, FP 1 to FP 4

To activate the zone pairs, apply +24 V (see Chapter 9.1) to the following inputs:

- X1-4 (FP1)
- X1-6 (FP2)
- X1-7 (FP3)
- X1-8 (FP4)

When changing over the zone pairs, please note that the new zone pair must be switched on before the previous pair is switched off. The procedure is allowed to last a maximum of 1 s. If this time period is exceeded, or if the previous zone pair is switched off too soon, the ROTOSCAN RS4 reports an error by switching off the two OSSDs and the alarm output. In addition, this state is shown in the indicator field on the scanner; LED3 (middle) and LED5 (right) will both be lit up and flashing quickly at approx. 4 Hz.

7.3 Alarm 1 (X1-5)

As long as the output X1-5 is switched on, the system signals trouble-free operation. If it is switched off, the following states are reported:

- Interruption of the warning zone is shown by the continuously lit LED 2 in the indicator field of the scanner.
- Warning state:
For instance, the system may detect a slight dirt buildup on the optical window. To signal this state, LED 5 on the scanner flashes (0.25 Hz). The user should clean the optical window before it gets dirtier; waiting too long will cause a device error to be reported and the outputs OSSD 1 and OSSD 2 to be switched off.
- Device error:
Such as an erroneous reference measurement or extreme dirt buildup on the optical window. This state is signaled by LED 5 flashing quickly (4 Hz).

Both the reporting of a warning zone interruption and the signaling of the warning and error state can be selected either separately or in combination. This procedure is described in the user's manual for the program "RS4soft".

Output X1-5 is equipped with an internal electronic current limit to protect it against damage from overload.

7.4 Alarm 2 (X1-15)

As long as the output X1-15 is switched on, the system signals trouble-free operation. If it is switched off, the following states are reported:

- Warning state:
For instance, the system may detect a slight dirt buildup on the optical window. To signal this state, LED 5 on the scanner flashes (0.25 Hz). The user should clean the optical window before it gets dirtier; waiting too long will cause a device error to be reported and the outputs OSSD 1 and OSSD 2 to be switched off.
- Device error:
Such as an erroneous reference measurement or extreme dirt buildup on the optical window. This state is signaled by LED 5 flashing quickly (4 Hz).

Output X1-15 is equipped with an internal electronic current limit to protect it against damage from overload.

7.5 OSSD 1 (X1-12) and OSSD 2 (X1-11)

When the detection zone is interrupted, the two semiconductor outputs switch off and, by way of elements such as positively guided relays, cause the monitored machine(s) to shut down.

It is not admissible to control different safety circuits with a single OSSD. Connected loads must exhibit a low-pass behavior in accordance with the plausibility control conducted by the scanner ($f_g \leq 1$ kHz, $C_L \leq 100$ nF). The OSSDs are equipped with an internal electronic current limit to protect them against damage from overload.

For some sample connections, see Chapter 8.

7.6 Data Communication

The interface X2 allows the ROTOSCAN RS4 to support two types of connections to the PC or laptop.

Communication via the X2 connector in RS232 mode does not require any further bridging. To enable data transfer in RS 422 mode, connect pin 5 with pin 6. The scanner automatically adjusts itself to the appropriate transfer type and baud rate.

The interface (X2) is used for

- configuring and setting parameters for the ROTOSCAN RS4
- transferring measurement data while the scanner is in operation
- evaluating the coordinates during parameter setting (e.g. for AGV applications)
- advanced status and control diagnostics.

Guard operation is only permitted with the PC cable (X2) or dummy connected screwed on. This also applies for transport and storage.

Please note the pin assignments specified in Chapter 9.5 . For additional information on using the X2 interface, refer to the user's manual for the program "RS4soft".

8 Integrating the ROTOSCAN RS4-4 into Machine Controls

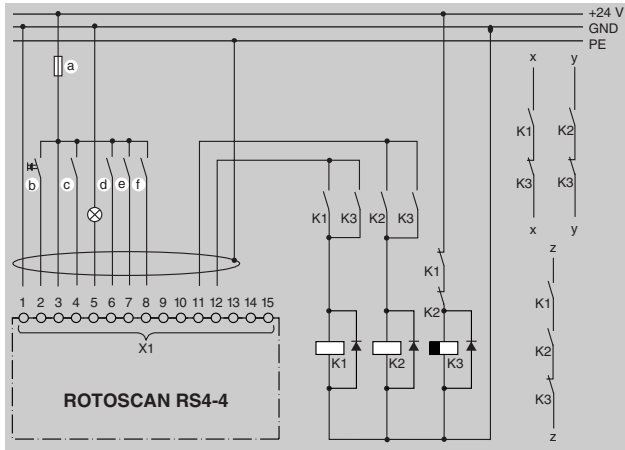
The following examples illustrate possibilities for integrating the ROTOSCAN RS4 into machine controls.

Once the operating voltage pin X1-3 (+UB) has been connected to pin X1-1 (GND) and a detection zone has been activated (X1-4, X1-6, X1-7 or X1-8), the unit is ready for operation.

Please see the point "Start detection zone" in the user's manual for the program "RS4soft".

8.1 Integrating the ROTOSCAN RS4 with External Wiring with Relays and Quadruple Zone Pair Changeover

In this connection example, the restart interlock function is provided by the connected command unit "WA", which applies the voltage of 24 V to the input RESTART X1-2. The ROTOSCAN RS4 itself must be configured using the "RS4soft" user software so that the operating mode "with restart interlock" is active.



- | | | | | | |
|---|---|----------------------------|---|---|-----------|
| a | = | Fuse 1.25 A, semi time-lag | d | = | DZ 2/WF 2 |
| b | = | Restart button | e | = | DZ 3/WF 3 |
| c | = | DZ 1/WF 1 | f | = | DZ 4/WF 4 |

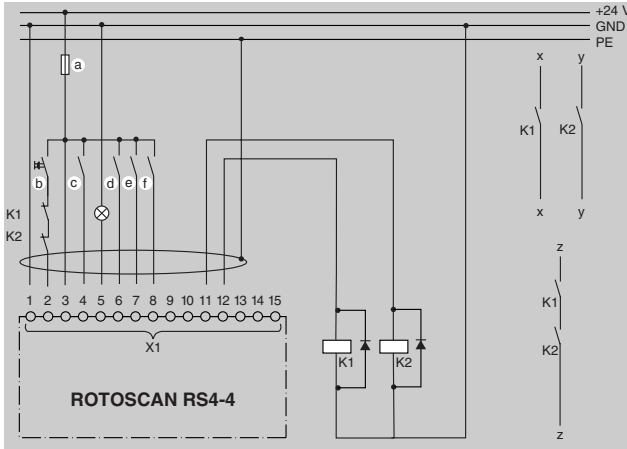
Fig. 8.1-1: Wiring the ROTOSCAN RS4 with evaluation of the OSSDs, zone pair changeover and restart interlock (example)

Relays K1 and K2 must have forced contacts. They are operated directly at the two failsafe semiconductor outputs OSSD 1 (X1-12) and OSSD 2 (X1-11).

Relay K3 has a deenergizing delay. A suitable mechanism must be provided for extinguishing sparks. Please note that doing this will cause the switching time to be extended.

Channels "x" and "y" must be integrated for Category 3 in accordance with DIN EN 954-1. Integrating one channel based on "z" is only permitted with a one-channel control system and taking into consideration the results of a risk analysis.

Serial machine controls are admissible only insofar the valid regulations allow.



- | | | | | | |
|---|---|----------------------------|---|---|-----------|
| a | = | Fuse 1.25 A, semi time-lag | d | = | DZ 2/WF 2 |
| b | = | Restart button | e | = | DZ 3/WF 3 |
| c | = | DZ 1/WF 1 | f | = | DZ 4/WF 4 |

Fig. 8.1-2: Wiring the ROTOSCAN RS4 with evaluation of the OSSDs, zone pair changeover, restart interlock and static relay monitoring

Relays K1 and K2 must have forced contacts. They are operated directly at the two failsafe semiconductor outputs OSSD 1 (X1-12) and OSSD 2 (X1-11).

A suitable mechanism must be provided for extinguishing sparks. Please note that doing this will cause the switching time to be extended.

Channels “x” and “y” must be integrated for Category 3 in accordance with DIN EN 954-1. Integrating one channel based on “z” is only permitted with a one-channel control system and taking into consideration the results of a risk analysis.

Serial machine controls are admissible only insofar the valid regulations allow.

8.2 Connecting the ROTOSCAN RS4 to a Safety Sequence Circuit with Manual Restart, Relay Monitoring, without Zone Pair Changeover

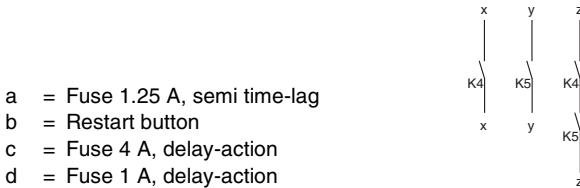
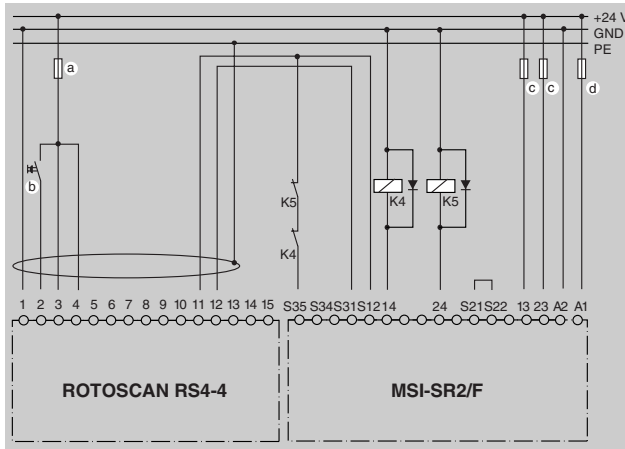


Fig. 8.2-1: Wiring the ROTOSCAN RS4 with external restart interlock and relay monitoring, and without zone pair changeover

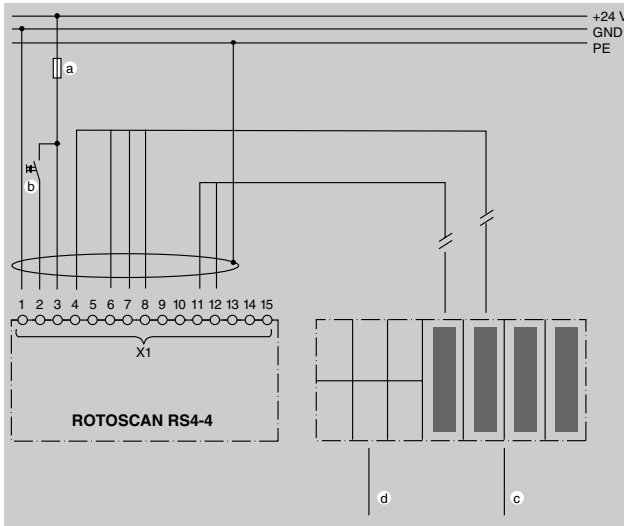
In this example, the relay monitoring is performed by an external safety module (e.g. MSI-SR2/F). Relays K4 and K5 must be equipped with positively guided contacts. A suitable mechanism must be provided for extinguishing sparks. Please note that doing this will cause the switching time to be extended.

Please refer to the operating instructions for the components.

Channels “x” and “y” must be integrated for Category 3 in accordance with DIN EN 954-1. Integrating one channel based on “z” is only permitted with a one-channel control system and taking into consideration the results of a risk analysis.

Serial machine controls are admissible only insofar the valid regulations allow.

8.3 Connecting the ROTOSCAN RS4 to a PLC with Corresponding Safety Level (Cat. 3 or higher, EN 954) and Zone Pair Changeover



- a = Fuse 1.25 A
- b = Restart button
- c = Decentralized peripherals, e.g. ET200M with failsafe signal subassembly
- d = Further processing by a failsafe PLC, e.g. SIMATIC S7-400F

Fig. 8.3-1: Connecting the ROTOSCAN RS4 to a failsafe PLC with a safety level (at least Cat. 3, EN 954) and zone pair changeover (example)

All switching functions in this sample connection are controlled directly by the PLC.

The changeover of 4 zone pairs is achieved by way of the inputs X1-4 (FP1), X1-6 (FP2), X1-7 (FP3) and X1-8 (FP4).

For applications in which the scanner must be separately enabled for its detection zone, the signal can be given either by the machine controls or by connecting a command unit for restart interlock. The ROTOSCAN RS4 itself must be configured using the “RS4soft” user program so that the operating mode “with restart interlock” is active.

9 Electrical connection

9.1 Electrical Power Supply

The ROTOSCAN RS4 requires a direct voltage of 24 V and 8 W of power plus the load at the outputs (max. 25 W).

The power must be supplied by way of an external 1.25 A, semi time-lag fuse (e.g. in an electronics cabinet). In addition, a permanent current of 2.5 A must be ensured before safeguarding begins in order to guarantee that the fuse will be triggered in case of a fault.

In keeping with electrical safety requirements, the power to the ROTOSCAN RS4 all connected input and output circuits must be provided by a power supply unit with protective isolation from a safety transformer according to IEC 742 or comparable (this also applies for the use of battery chargers for AGV applications).

9.2 Connecting the PC and Control Cables to the Scanner

Three connector adapters with cable screw coupling are supplied with the ROTOSCAN RS4-4. Two of these are needed to accommodate the 9-pin Sub-D connector and the 15-pin Sub-D jack (PC cable and control cable). Two of these are needed to accommodate the 9-pin Sub-D connector and the 15-pin Sub-D jack (PC cable and control cable). A housing is used as protection of the X2 interface if data communication with the PC is desired.

The cable screw couplings can accommodate cable diameters from 6.5 mm to 10.5 mm.

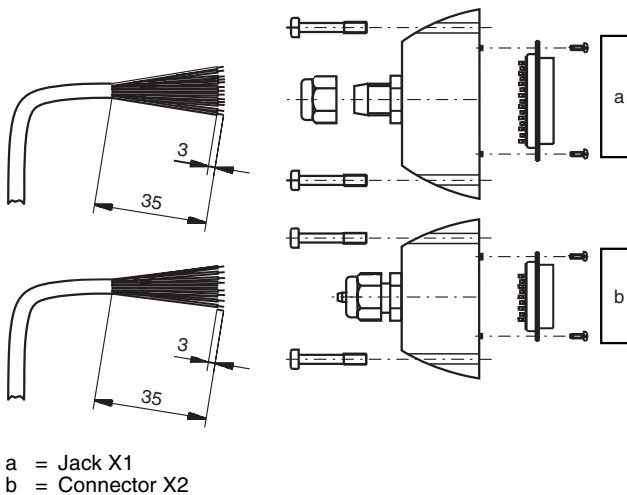


Fig. 9.2-1: Preparing the connectors

The connector adapter of control cable X1 must be connected with interface X1 and screwed tightly to the ROTOSCAN RS4. The connector adapter of cable X2, or else the X2 dummy cap (without a cable), must also be screwed tightly to the ROTOSCAN RS4-4. Threaded drill holes are located on the top of the scanner housing for this purpose. If one of the two connection housings is missing, the ROTOSCAN RS4 no longer meets the requirements of protection type 65. For information on the assignment of the connector, please refer to Chapter 2.2 and 9.5 the connection and operating instructions of the RS4.

9.3 Connector Assembly

Every connector adapter consists of the following individual parts:

- Housing with sealing ring and fastening bolts
- Cable screw coupling (M16) with dummy plugs
- Sub-D9 connector and/or Sub-D15 connector, each with a solder connection

9.4 Points to Consider When Preparing and Laying the Cables

- The cross-section of cable X1 must be at least 0.5 mm^2 .
- The outer diameter of the cable must be between 6.5 mm and 10 mm.
- The maximum cable length for X1 is 50 m.
- The maximum cable length for X2 is 10 m (for RS232).
- The maximum cable length for X2 is 50 m (for RS422, twisted pair).
- Use shielded cables.
- Connect the cable shielding with PE to the electronics cabinet only.
- The cables must not be laid loose.

Scanner control cables may not be laid in a stand parallel to power supply cables for machines. This minimizes the effects of inductive interference factors from motors carrying high current. In addition, the cables should be laid so that they cannot be damaged (e.g. by being crushed or pinched).

Cabling prepared for connection to the scanner is available as an optional accessory in various lengths and for both interfaces. For further information, see Chapter 13.

9.5 Interface Pin Assignments

Pin Assignments for Connector X1

PIN	Signal	Description
1	GND	Power supply ground
2	Restart	Input, scanner reset, and connecting the restart button of the restart button
3	UB	+24-V DC power supply; protected by a 1.25 A delayed-action fuse
4	FP 1	Changeover to zone pair 1
5	Alarm 1	Semiconductor output that switches off when the warning zone is violated as well as for warning messages such as "optical window slightly dirty", error messages such as "optical window very dirty", and for internal errors (the functions can also be selected in combination).
6	FP 2	Changeover to zone pair 2
7	FP 3	Changeover to zone pair 3
8	FP 4	Changeover to zone pair 4
9	NC	Do not assign
10	NC	Do not assign
11	OSSD 1	Semiconductor output, switches off when the detection zone is violated, Channel 1
12	OSSD 2	Semiconductor output, switches off when the detection zone is violated, Channel 2
13	NC	Do not assign
14	NC	Do not assign
15	Alarm 2	Semiconductor output with shut-off when warning and malfunction message

Table 9.5-1: Pin Assignments for Connector X1

Pin Assignments for Connector X2 used as an RS 232 Port

PIN	Signal	Description
1	- - -	Reserved
2	TxD	Data communication, transmit
3	RxD	Data communication, receive
4	- - -	Reserved
5	GND/shield	Ground / shield
6	RS 232	Reserved
7	NC	Do not assign
8	NC	Do not assign
9	Reserved	Reserved for testing purposes

Table 9.5-2: Pin Assignments for Connector X2 used as an RS 232 Port

Pin Assignments for Connector X2 used as an RS 422 Port

PIN	Signal	Description
1	Tx +	Data communication, receive
2	Tx -	Data communication, receive
3	Rx -	Data communication, transmit
4	Rx +	Data communication, transmit
5	GND/shield	Ground / shield
6	RS 422	Select RS422 interface by connecting a bridge to pin 5
7	NC	Do not assign
8	NC	Do not assign
9	Reserved	Reserved for testing purposes

Table 9.5-3: Pin Assignments for Connector X2 used as an RS 422 Port

For the pin arrangement, please refer to Chapter 2.2 and 9.5 the connection and operating instructions of the RS4.

10 Commissioning

Communication with the PC or laptop needs to be established so that the ROTOSCAN RS4 can be configured and the detection zones and warning zones can be programmed. This is also necessary for displaying the measurement contours and for the system check.

The program "RS4soft", which is included with delivery, makes this easy and convenient to do. Refer to the operating instructions to find additional important information and helpful explanations.

10.1 Hardware and Software Requirements

The following components are required for the initial startup:

- ROTOSCAN RS4
- RS232 interface cable (1:1, without cross-connection)
- Shielded control cable for the power supply and for activating a zone pair
- Power supply that meets the requirements specified in Chapter 9.1
- PC or laptop, color monitor
- "RS4soft" program

The PC should fulfill the following requirements:

- Intel® processor, Pentium® class or higher (or compatible models such as AMD® or Cyrix®)
- At least 64 MB RAM
- CD drive
- Hard drive with at least 50 MB of free memory (more if detection zone data and/or configuration data are going to be stored)
- Mouse
- Interface RS 232 (serial)
- Microsoft® Windows 95/98/NT®/2000/XP®

10.2 Installing "RS4soft" and Starting Up the ROTOSCAN RS4

- First, run the installation program "Setup.exe" in order to install the program on the PC.
- Start the software by calling up the program.
- Connect the control cable and the PC cable.
- Then apply the supply voltage to the ROTOSCAN RS4. The scanner will now attempt to communicate with the PC; this process is displayed on the screen.

- If the connection between the ROTOSCAN RS4 and the PC was successful, you can enter the appropriate password and then change the parameters and zone pairs of the ROTOSCAN RS4 to meet the needs of the particular application.
The standard password to be entered in the authorized level “Authorized Customer” of the ROTOSCAN RS4 is: “RS4LEUZE”. Please note that the password must be changed following the initial configuration of the scanner, and that the data carrier must be kept locked up in a secure location.
- The ROTOSCAN RS4 is ready for operation once the scanner settings and detection zone configurations have been transferred.

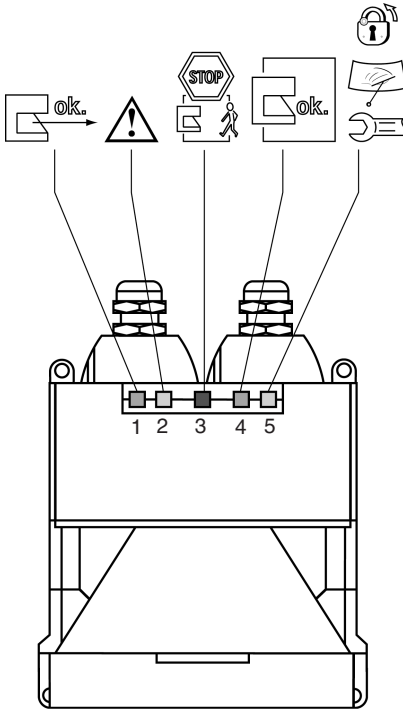
Every ROTOSCAN RS4 is factory-equipped with the maximum safety parameters. For this reason, first the device settings and then the detection zones must be adapted to the requirements of the application before the scanner is put into operation. After configuring the scanner, remove the PC interface cable from position X2, slip on the dummy cap provided with delivery, and screw it tight.

For a list of parameters, please see the in the Configuration and Diagnostics Software “RS4soft”.

Please observe Chapter 11, Testing and Maintenance.

10.3 ROTOSCAN RS4-4 / RS4-4E status indicator

There are five LEDs located on the front of the scanner behind the cover with the matte finish. These LEDs indicate the status of the ROTOSCAN RS4.



Association to function:

Easy-to-interpret pictographs on ROTOSCAN RS4 provide information on the meaning of the LEDs

- 1 = Green
- 2 = Yellow
- 3 = Red
- 4 = Green
- 5 = Yellow

Fig. 10.3-1: The ROTOSCAN RS4 status indicator

Meaning of the individual LEDs

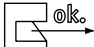


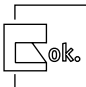



LED	Color	Function / Meaning	Pictograph
1	Green	Sensor function is active, active detection zone is free	
2	Yellow	Warning zone is assigned	
3	Red	OSSD outputs are switched off	
4	Green	OSSD outputs are switched on	
5	Yellow	<ul style="list-style-type: none"> Constantly lit: Start interlock Restart interlock Flashing slowly (1): Warning message (approx. 0.25 Hz) Optical window dirty flashing quickly (((1))): device message (approx. 4 Hz) 	  

Table 10.3-1: Meaning of the RS4 LED displays

10.4 Status information of the ROTOSCAN RS4

Scanner display LED numbers 1 2 3 4 5	Indicator	Status
- - 1 0 -	LED 3	The OSSD outputs are switched off (e.g. during booting).
1 0 0 1 0	LED 1 LED 4	The sensor function is active (measurement operation without an interruption of the activated zone pair). The OSSDs are switched "active high".
1 1 0 1 0	LED 1 LED 2 LED 4	The sensor function is active (measurement operation without a violation of the activated detection zone). Violation of the activated warning zone. The OSSDs are switched "active high".
0 1 1 0 -	LED 2 LED 3	Violation of the warning zone. Violation of the detection zone. The OSSDs are switched off.
1 0 0 1 (1)	LED 1 LED 4 LED 5	The sensor function is active (measurement operation without a violation of the activated detection zone). The OSSDs are switched "active high". Warning message signaled by slow flashing at approx. 0.25 Hz (e.g. with optical window dirty)
0 0 1 0 (((1)))	LED 3 LED 5	The OSSDs are switched off. Fault message indicated by fast flashing at about 4 Hz (e.g. with defect or safety-related fault)
1 0 1 0 1	LED 1 LED 3 LED 5	The sensor function is active (measurement operation without an interruption of the activated zone pair). The OSSDs are switched off. Restart interlock is active.
0 1 1 0 1	LED 3 LED 5	Interruption of the zone pair. The OSSDs are switched off. Restart interlock is active.

1 = LED is lit up
0 = LED is dark
- = undefined

Table 10.4-1: Status information of the ROTOSCAN RS4

Upon delivery, the ROTOSCAN RS4 is programmed with the largest possible detection zone and with activated startup interlock and manual restart. For this reason, LED 5 is constantly lit up when the scanner is switched on. When starting up your ROTOSCAN RS4, please modify the parameters to meet the specific needs of your application.

11 Maintenance and Testing

When placing the system in service for the first time, when it has been out of service for some time, after conversions and repair work, make certain the scanner and any other safety parts are checked specifically for the application and operation by the responsible trained specialist. This must be done taking into consideration applicable local requirements, especially for guidelines on machines and using work material and work safety guidelines. If the correct functionality is not clearly confirmed or if safety-related parameters have been changed, turn the machine or vehicle off immediately. Stopgap measures are not permitted.

Please comply with the safety notes in Chapter 3!

11.1 Test before First Startup by Person Qualified and Authorized to Perform the Task

- Check in accordance with the guidelines cited above, using the checklists provided below if necessary to verify that the protective equipment has been properly attached is connected to the control system electrically and that its effect works in all operating modes of the machine or vehicle.
- The result of the test must be documented, along with the scanner setting, in an understandable form. Printouts of scanner parameters and all defined detection zone contours must be included with the materials. Keep these where they are inaccessible for unauthorized personnel.
- During initial startup, you should anticipate unexpected behavior in the machine or vehicle. Because of this, people must be kept out of the danger area.
- Operating personnel must be instructed by trained specialists before starting work. Instruction is part of the area of responsibility of the machine operator.
- Ensure that a daily test is performed. Please take note in this regard of the “Daily Test with the Test Piece Performed by Responsible Operating Personnel”.

Leuze Lumiflex offers a professional specialist service for initial startup. You can arrange in a separate order to have all necessary testing and instruction tasks performed by this service (www.leuze.de). The results of the test are documented in accordance with ISO 9001 for the machine operator.

11.2 Extended Shutdown of the RS4

If a system is taken out of operation and the RS4 is placed in storage for later use with other machines/vehicles, the factory settings should be restored. Please see the chapter entitled “Setting Default Values in the Scanner” in the RS4soft operating instructions.

11.3 Regular Tests by a Person Qualified and Authorized to Perform the Task

Regular tests must be performed taking into consideration applicable local requirements, especially for guidelines on machines and using work material and work safety guidelines. The purpose of these tests is to discover changes (for example lag times) or manipulations on a machine, vehicle or piece of safety equipment.

To do this, see the checklists under Chapter 11.5 or 11.6

- Have the effectiveness of the safety equipment checked within the required periods, but at least once a year by a trained and knowledgeable person.
- The checklists mentioned above are ideal for regular tests, especially checks for safety-related changes to the machine, the vehicle or the piece of safety equipment.

Leuze Lumiflex offers a professional specialist service for regular checks. You can arrange in a separate order to have all necessary testing and instruction tasks performed by this service (www.leuze.de). The results of the test are documented in accordance with ISO 9001 for the machine operator.

11.4 Daily Test by with Test Piece Performed by Responsible Operating Personnel

The ROTOSCAN RS4 is a safety-oriented laser scanner of Category Typ3. It is extremely important, however, to check the effectiveness of the detection zone with the test piece daily or after a shift change. This ensures that if the parameters or operating mode is changed, the protective function is ensured at every point in the detection zone.

11.4.1 Checklist for Daily Test of Stationary Applications by Responsible Operating Personnel

- | | | |
|--|-----|----|
| 1) Are there any problems in the external state of the protective equipment, the cable, cable connections and any command devices or any command devices? | Yes | No |
| 2) Are the fastening screws in the mounting system firmly connected? | Yes | No |
| 3) Are the fastening screws in the RS4 firmly connected? | Yes | No |
| 4) Are both protective caps (X1 and X2) screwed on and are the firmly in place? | Yes | No |
| 5) Do the safety equipment and command devices show any safety-relevant changes or gaps in safety (e.g. changes in access possibilities or changes in the surrounding area)? | Yes | No |
| 6) If the protective function of the RS4 is present for all required monitoring cases (e.g. testing the switch-off function with a test piece along the detection zone contour, the LED3 for RS4 must light up with each attempt and the movement that poses a danger must be stopped immediately. Possibility of danger to the person running the test must be excluded)? | Yes | No |
| 7) Is the startup test/restart interlock (if there is one) working? | Yes | No |
| 8) Does the base marking match the detection zone contour? | Yes | No |
| 9) Do the necessary detection zones match the configuration protocol? | Yes | No |
| 10) If correct functionality is not certain or id the RS4 LED 5 is flashing, take the machine out of operation immediately. Are any doubts resolved? | Yes | No |

If the answer to any of the questions above is No, have the machine checked by a trained specialist.

11.4.2 Checklist for Daily Test of Mobile Applications by Responsible Operating Personnel

- | | | |
|--|-----|----|
| 1) Are there any problems in the external state of the protective equipment, the cable, cable connections and any command devices or any command devices? | Yes | No |
| 2) Are the fastening screws in the mounting system firmly connected? | Yes | No |
| 3) Are the fastening screws in the RS4 firmly connected? | Yes | No |
| 4) Are both protective caps (X1 and X2) screwed on and are the firmly in place? | Yes | No |
| 5) Do the safety equipment and command devices show any safety-relevant changes or gaps in safety (e.g. by widening the vehicle)? | Yes | No |
| 6) If the protective function of the RS4 is present for all required monitoring cases (e.g. testing the switch-off function with a test piece along the detection zone contour, the LED3 for RS4 must light up with each attempt and the movement that poses a danger must be stopped immediately. Possibility of danger to the person running the test must be excluded)? | Yes | No |
| 7) Does the vehicle actually stop within the limits defined by the responsible specialist (test of switch-function using a test piece. Is the possibility of danger to the person running the test excluded)? | Yes | No |
| 8) Is the startup test/restart interlock (if there is one) working? | Yes | No |
| 9) Do the necessary detection zones match the configuration protocol? | Yes | No |
| 10) If correct functionality is not certain or id the RS4 LED 5 is flashing, take the vehicle out of operation immediately. Are any doubts resolved? | Yes | No |

If the answer to any of the questions above is No, have the vehicle checked by a trained specialist.

11.5 Checklist for Testing Stationary Applications

The following checklist represents an aid. It helps in, but does not replace the test before the initial startup as well as the regular tests performed by a trained specialist.

- | | | |
|--|-----|----|
| 1) Is the mounting position and adjustment of the RS4 correct and is the possibility of misusing the RS4 (for example to climb on excluded?) | Yes | No |
| 2) Is the external condition of the additional safety equipment and control devices free of problems? | Yes | No |
| 3) Are all connection pieces and connection cables in flawless condition? | Yes | No |
| 4) Are the two safety outputs (OSSDs) connected to the following machine control system in accordance with the corresponding safety category? | Yes | No |
| 5) Are the following switch elements that are controlled by the RS4, for example contactors with forced contacts or safety valves monitored by the feedback loop (EDM)? | Yes | No |
| 6) Does the actual connection of the RS4 to the machine control system match the circuit diagrams? | Yes | No |
| 7) Was the safety distance calculated according to the applicable formulas for safeguarding danger areas and is this minimum distance observed between the detection zone contour and the danger areas? | Yes | No |
| 8) Is the effect of any potentially reflective surfaces taken into consideration with an addition in the calculation of the safety-related distance? As an alternate solution, have the surfaces been changed (e.g. matted)? | Yes | No |
| 9) Does the risk assessment take into account the fact that detection zone heights above 300 mm are considered high enough to crawl under in the Standard (EN 999)? | Yes | No |
| 10) Is access to the danger area only possible through the activated detection zone of the RS4 in question, or are other entrance or access possibilities safeguarded with suitable safety parts, for example guard fences? | Yes | No |
| 11) Is the possibility of being between the activated detection zone and the danger area reliably ruled out? | Yes | No |
| 12) Is an installed protection to prevent walking behind (e.g. undercut) in effect? | Yes | No |
| 13) Is the RS4 able to cover the entire danger area? Are dead zones excluded? | Yes | No |

- | | | |
|--|-----|----|
| 14) Has the effectiveness of the activated detection zone been tested with the black test piece (70-mm diameter)? | Yes | No |
| 15) Does the base mark match the correctly identified detection zone? | Yes | No |
| 16) Is the start/restart button for resetting the RS4 positioned according to requirements and does it work properly? | Yes | No |
| 17) Does the RS4 work in all necessary operating modes and during the entire motion of the machine that is causing a hazard? | Yes | No |
| 18) Is the motion causing the hazard stopped when electrical power to the RS4 is disconnected and is a confirmation of the Start/restart key necessary to reset the machine after the power is restored? | Yes | No |
| 19) Are all test and parameter inaccessible to unauthorized personnel? | Yes | No |
| 20) Is an identifying sign placed on the machine for the daily test of the RS4 where it is clearly visible for operating personnel? | Yes | No |

11.6 Checklist for Testing Mobile Applications

The following checklist represents an aid. It helps in, but does not replace the test before the initial startup as well as the regular tests performed by a trained specialist.

- | | | |
|--|-----|----|
| 1) Is the mounting position and adjustment of the RS4-4 correct and is the possibility of misusing the RS4 (for example to climb on excluded? | Yes | No |
| 2) Is the external condition of the additional safety equipment and control devices free of problems? | Yes | No |
| 3) Are all connection pieces and connection cables in flawless condition? | Yes | No |
| 4) Are the two safety outputs (OSSDs) connected to the following vehicle control system in accordance with the corresponding safety category? | Yes | No |
| 5) Are the following switch elements that are controlled by the RS4, for example contactors with forced contacts or safety valves monitored by the feedback loop (EDM)? | Yes | No |
| 6) Does the actual connection of the RS4 to the vehicle control system match the circuit diagrams? | Yes | No |
| 7) Has the safety distance for safeguarding automatic guided vehicles (AGV) been calculated and observed according to applicable formulas? | Yes | No |
| 8) Is the effect of any potentially reflective surfaces taken into consideration with an addition in the calculation of the safety-related distance? As an alternate solution, have the surfaces been changed (e.g. matted)? | Yes | No |
| 9) Does the risk assessment take into consideration the fact that the height of the detection zone must be as low as possible (DIN EN 1525)? | Yes | No |
| 10) Is an installed protection to prevent walking behind (recessing the RS4) in effect? | Yes | No |
| 11) Has the effectiveness of the activated detection zone been tested with the black test pieces (70-mm diameter standing and 200-mm diameter on their sides)? | Yes | No |
| 12) Is the start/restart button for resetting the RS4 positioned according to requirements and does it work properly? | Yes | No |
| 13) Does the RS4 work in all necessary operating modes and during the entire motion of the vehicle that is causing a hazard? | Yes | No |

- | | | |
|--|-----|----|
| 14) Is the motion causing the hazard stopped when electrical power to the RS4 is disconnected and is a confirmation of the Start/restart key necessary to reset the vehicle after the power is restored? | Yes | No |
| 15) Are all test and parameter inaccessible to unauthorized personnel? | Yes | No |
| 16) Is an identifying sign placed on the machine for the daily test of the RS4 where it is clearly visible for operating personnel? | Yes | No |

11.7 Replacing the Optical Window

11.7.1 General information:

- Only professionally trained personnel are permitted to replace optical windows.
- Be careful everything stays clean during all jobs. (If possible, work in a dust-free environment. A production hall is not a good place for working on the device).

1) Loosening the housing parts

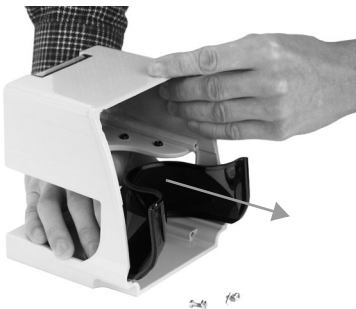


Loosen the four Allen screws on the rear housing wall.
Take the two housing parts carefully apart from each other and place them on a level surface.

2) Dismounting the optical window

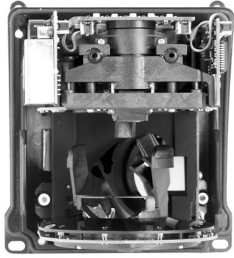


Loosen the screws on the fastening straps.
Remove the fastening straps



Press the old optical window out through the rear (through the housing)

3) Checking the condition of the scanner

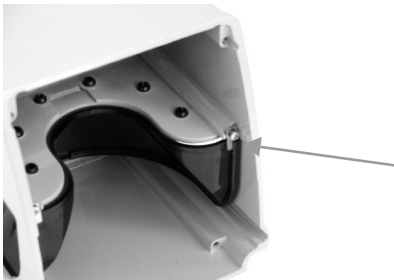


Please do not fail to observe:
Check the mirror, optics and housing parts to make certain they are free of dust. Dry if necessary with a dry, oil-free, light jet of compressed air with appropriate components. Do not touch any parts in the device. Avoid leaving fingerprints (grease from fingers may cause the device to function improperly)

4) Inserting the New Optical Window

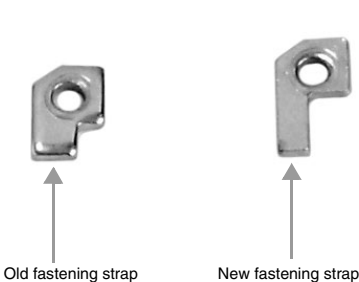


Hold the new optical window by the sides and carefully insert it in the correct position, pressing the optical window together slightly as you do so. Make certain the rubber seal is not damaged. Make certain it is in the groove in the housing designed for that purpose.



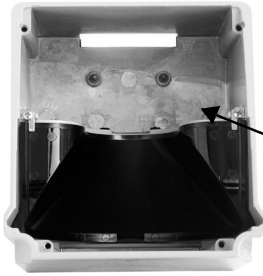
Check to make sure the optical window is seated correctly. There should be no gap between the optical window and the housing that lets light through.

Find the correct position to avoid a light gap



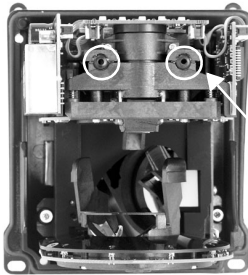
Then fasten the new optical window in place again with the fastening straps. As you screw in the screws, you can apply a little pressure on the outermost edge of the optical window with your thumbs. The new fastening strap (which has been available since 2002) is the one to use. If an old fastening strap is still installed, please ask for a replacement at no cost with Order No 50040217 from your Leuze lumiflex Service Support Center.

5) Assembling the housing



When assembling the housing, note that the two retaining bolts slide into the rubber sleeves provided for them. To do this, carefully join the two housing parts on a level surface.

Retaining bolts



Rubber sleeves



After that, carefully screw in the screws on the rear wall of the housing, working back and forth around the circle from screw to screw.

Remove any finger prints on the optical window

11.7.2 Initial Measurement of the New Optical Window

After the optical window has been properly mounted, it is essential to perform a calibration of the optical window. Correct functionality of the scanner cannot be guaranteed without calibrating the optical window!

Please note: The calibration should be performed with an ambient temperature of 20°C - 25°C!

Safety Notes: The optical window (dark red) must be clean and in new condition. Dirty and scratched panes must not be calibrated and used. They would represent a safety risk since the laser light would be weakened under some circumstances.

11.7.3 Procedure when Using the RS4soft User Software Version 1.09 or later

- 1) Starting the PCs
- 2) Connection of X1 (electrical power supply with zone pair activated) and X2 (RS232 cable 1:1)
- 3) Start RS4soft user software
- 4) Select the "Authorized Customer" authorization level
- 5) Confirm the echo data shown by the scanner
- 6) Click on the "Calibrate optical window monitoring" icon under "System data"
- 7) Start the optical window calibration with "Calibration" (lasts a few seconds, typically with values between 100 - 700).
- 8) Click on the "Close" button

11.8 Cleaning

11.8.1 Cleaning the Optical Window when Dirty

Different methods will work better under different conditions depending on load and medium. What is the best approach?

Note:

RS4 clean sets are available for cleaning the optical window. They contain a special cleaning agent and suitable cleaning cloths. Two sizes are available. For more information, see the chapter entitled “Accessories and Spare Parts”.



Please note:

Generally it is sufficient to remove particles relatively quickly moving the cleaning cloth horizontally. If cleaning takes longer (for example because of fingerprints), the scanner will report the fault in optical window monitoring (after cleaning, press “Restart”).

Description	Solution
Particles, loose, abrasive	<ul style="list-style-type: none"> Remove with no contact using suction or blow off with oil free air Wipe clean with a cleaning cloth, wiping in one direction only
Particles, loose, not abrasive	<ul style="list-style-type: none"> Suction off with no contact or blow off with oil-free air or Wipe clean with a cleaning cloth, wiping in one direction only
Particles, adhering	<ul style="list-style-type: none"> Wet or moisten the cloth with cleaning agent Wipe clean with a cleaning cloth, wiping in one direction only
Particles, statically charged	<ul style="list-style-type: none"> Suction off with no contact Wipe clean with cloth moistened in cleaning agent
Particles/drops, greasy	<ul style="list-style-type: none"> Wet or moisten the cloth with cleaning agent Wipe clean with a cleaning cloth, wiping in one direction only
Drops of water	<ul style="list-style-type: none"> Wipe clean with a cleaning cloth, wiping in one direction only
Drops of oil	<ul style="list-style-type: none"> Wet or moisten the cloth with cleaning agent Wipe clean with a cleaning cloth, wiping in one direction only
Fingerprints	<ul style="list-style-type: none"> Wet or moisten the cloth with cleaning agent Wipe clean with a cleaning cloth, wiping in one direction only
Scratches	<ul style="list-style-type: none"> Replace optical window

11.8.2 Cleaning the Optical Window; Cleaning Diffusing Light Panes

The front and light panes and diffusion screens must be washed depending on the load on the application in question. Generally this is a quick process.



Fig. 11.8-1: Cleaning the Optical Window

Sharp cleaning materials and / cloths that scratch must never be used!



Fig. 11.8-2: Cleaning Diffusing Light Panes

Note:

Dirt can often be eliminated in a work step. If the optical window is cleaned within 4, the scanner is not turned off.

Note:

The order designations are available in Chapter 13.1.

12 Service

Your partner in all matters of occupational safety, Leuze lumiflex GmbH + Co KG offers additional services:

- Testing the ROTOSCAN RS4 laser scanner
- Instruction on the topic "Safety at Work"
- Instruction on the topic "Information about Laser Scanners"

The results of the test are documented in accordance with ISO 9001 for the machine operator.

Our customer service department is available will be happy to assist you at phone number 08141/53 50-122 or e-mail address service.lumiflex@leuze.de.

12.1 Disposal

Laser scanners that are no longer in use must be disposed of in an appropriate manner.

13 Delivery Package

The **basic unit** consists of:

- ROTOSCAN RS4
- RS4-connector, complete, 15-pin, interface X1
- RS4-connector, complete, 9-pin, interface X2
- Connecting and operating instructions for "ROTOSCAN RS4-4 / RS4-4E",
User's manual for "RS4soft",
Configuration and Diagnostic Software "RS4soft"
on CD-ROM incl. the "RS4soft" operating instructions
- Mounting screws, 4 pieces
- Safety notes and guidelines

13.1 Accessories and spare parts

Brief description	Description	Order No.
RS4-MS	RS4 mounting system for securing and adjusting the RS4	50033346
RS4-Adap-P	RS4 scanner adapter with already existing mounting system	50035814
RS4-COB-230	RS4 configuration and test equipment, 230 V	97005001
RS4-AB	RS4 Analysis box for neutral signal detection	520090
RS4-TB-70-500	RS4 test piece, cylinder, 500 mm in length, 70 mm in diameter, reflectance factor approx. 1.8 %	50036433
RS4-TB-200-1000	RS4 test piece, cylinder, 1,000 mm in length, 200 mm in diameter, reflectance factor approx. 1.8 %	50036434
RS4-CB-X1-5	RS4 control cable, prepared on scanner side for connection to the scanner, 5 m	50035736
RS4-CB-X1-10	RS4 control cable, prepared on scanner side for connection to the scanner, 10 m	50035737
RS4-CB-X1-20	RS4 control cable, prepared on scanner side for connection to the scanner, 20 m	50035849
RS4-CB-X1-35	RS4 control cable, prepared on scanner side for connection to the scanner, 35 m	50035850
RS4-CB-X1-50	RS4 control cable, prepared on scanner side for connection to the scanner, 50 m	50035851
RS4-CB-X2-3	RS4 PC cable, prepared on both sides for connection to scanner, 3 m	50035863
RS4-CB-X2-5	RS4 PC cable, prepared on both sides for connection to scanner, 5 m	50035865
RS4-CB-X2-10	RS4 PC cable, prepared on both sides for connection to scanner, 10 m	50035867
RS4-clean-Set1	Cleaning fluid for synthetic materials, 150 ml, 25 cleaning cloths, soft and lint-free	430400
RS4-clean-Set2	Cleaning fluid for synthetic materials, 1000 ml, 100 cleaning cloths, soft and lint-free	430410
RS4-cleanfluid2	Cleaning fluid for synthetic materials, 1000 ml	112310
RS4-cleantex2	100 cleaning cloths, soft and lint-free	112320

Brief description	Description	Order No.
RS4-MGS-X1-Set	RS4 connector, cpl, 15-p, for X1 interface, side cable guiding	426266
RS4-MGS-X2-Set	RS4 connector, cpl, 9-p, for X2 interface, side cable guiding	426265
RS4-MG-X1-Set	RS4 connector, cpl, 15-p, for X1 interface	50035735
RS4-MG-X2-Set	RS4 connector, cpl, 9-p, for X2 interface	50035768
RS4-Win	RS4 scanner optical window with seal	50035816
RS4-Foil-PIC	RS4 Picto foil for scanner LEDs	50035855
RS4-SW-CD	RS4soft configuration and diagnostic software on CD-ROM	50035734

Table 13.1-1: Accessories and spare parts for the RS4-4

The connecting and operating instructions for the RS4 and the operator's manual for RS4soft are available in German, English, French and Italian.

13.2 Coding of the Control Cable X1

The following table defines the pin assignments for the 12-pin connector cable

Pin No.	Color code	Meaning
1	bk	GND
2	bl	Restart
3	rd	U _B
4	or	FP 1
5	ge	Alarm 1
6	gn	FP 2
7	vio	FP 3
8	gray	FP 4
9	n.c.	
10	n.c.	
11	wh	OSSD 1
12	wh-bk	OSSD 2
13	n.c.	
14	wh-br	
15	br	Alarm 2

Table 13.2-1: Coding of the Control Cable X1

14 Technical data

14.1 Test Pieces

The following test pieces are defined for the purpose of controlling the effectiveness of the monitoring function by the detection zones:

- Cylinder, 500 mm in length, reflectance factor $1.8 \% \pm 0.2 \%$, for stationary applications, diameter: 30, 40, 50, 70, 150 mm
- Cylinder, 1000 mm in length, 200 mm in diameter, reflectance factor $1.8 \% \pm 0.2 \%$, for mobile systems (e.g. AGV).

14.2 Detection zone

Detection range at a resolution of 30 mm at a resolution of 40 mm at a resolution of 50 mm at a resolution of 70 mm at a resolution of 150 mm	1,60 m 2,20 m 2,80 m 4,00 m 4,00 m
Reflectance factor	min. 1,8%
Min. adjustable range	200 mm
Detection range of test piece from housing	min. 0 mm
Response time	min. 80 ms (2 scans) adjust. up to 640 ms (16 scans)
Number of detection zones	4 (changeover via switch inputs)
Output	2 failsafe PNP transistor outputs, 24 V/250 mA
Safety category	Requirement class 4 as per DIN V 19250, fail-safe, category 3 as per EN 954-1, Type 3 as per DIN EN 61496-1, IEC 61496-3
Startup	The startup test and start interlock can be adjusted separately.
Restart	Automatic or manual, adjustable from 160 ms to 10 s

Table 14.2-1: Technical Data – Detection Zone

14.3 Detection Zone Additions

Addition with deactivated dust suppression	83 mm
Addition for activated dust suppression	83 mm (for a detection zone size < 3.5 m) 100 mm (for a detection zone size > 3.5 m)
Addition if retro-reflectors or very shiny surfaces such as certain metals or ceramics are present in the scanning plane	0 mm (more than 1.2 m behind the detection zone line) 110 mm (in the detection zone or up to 1.2 m behind detection zone line)

Table 14.3-1: Detection Zone Additions

14.4 Warning zone

Detection range	0 - 15 m
Reflectance factor	min. 20 %
Object size	150 x 150 mm
Response time	Double evaluation: 80 ms (corresponds to 2 scans), up to 16 scans can be selected (640 ms)
Number of warning zones	4 (selectable via switch inputs)
Output	PNP transistor output, max. 100 mA

Table 14.4-1: Technical data – warning zone

14.5 Contour Measurement

Measurement range	0 - 50 m
Reflectance factor	min. 20 %
Output	Serial interface RS 232 (10 m), RS 422 (50 m)
Radial resolution	5 mm
Lateral resolution	0.36°

Table 14.5-1: Technical data – contour measurement

14.6 Electrical Power Supply

Power supply	+24 VDC +20 % / -30 %, supply according to IEC 742 with safety transformer or comparable for DC/DC converters
Overload protection	Provide by 1.25 A semi-delay fuse in the electronics cabinet
Current consumption	approx. 300 mA (use a power supply with 2.5 A)
Power consumption	8 W at 24 V, plus the output load
Excess voltage protection	Over-voltage protection with safe end cut-off
Voltage drops	In accordance with DIN EN 61496-1
Non-fused ground conductor	Connection not allowed

Table 14.6-1: Technical data – electrical power

14.7 Inputs

Restart/Reset	For connecting a command device for operating mode “with restart interlock” and/or device reset, dynamically monitored, 24 VDC, optically isolated
Zone pair changeover	For selecting among 4 zone pairs via 4 control cables with internal monitoring (zone pair = 1 detection zone and 1 warning zone), 24 VDC, optically isolated
Signal definition High / logical 1 Low / logical 0	16 ... 30 V < 3 V

Table 14.7-1: Technical data – inputs

14.8 Outputs

Detection zone	2x failsafe semiconductor output, PNP, max. 250 mA, short-circuit monitored, overload protected
Warning zone/dirt/ Fault	2x PNP transistor output, max. 100 mA
Load characteristics, maximum	Low pass behavior, limit frequency $f_g = < 1$ kHz, $C_{Load} \leq 100$ nF
Level high (OSSD active) Level low (OSSD inactive) Level high (alarm active) Level low (alarm inactive)	$U_B - 3.2$ V < 2.0 V $U_B - 4$ V < 2.0 V

Table 14.8-1: Technical data – outputs

14.9 Software

User software	Configuration and Diagnostics Software under Windows® 95/98/2000/NT/XP with safe protocol for programming
---------------	---

Table 14.9-1: Technical data – software

14.10 Interfaces

RS 232, RS 422	For device configuration and data exchange
----------------	--

Table 14.10-1: Technical data – interfaces

14.11 Optics

Angle range	max. 190 °
Angle resolution	0.36°
Lateral tolerance without mounting system with mounting system	± 0.18° (with respect to the back wall of the housing) ± 0.22° (with respect to the mounting surface)
Scanning rate	25 scans/s or 40 ms/scan
Laser protection class	Class 1, as per EN 60825-1: 1994 + A1: 2002 + A2: 2001 Wavelength: 905 nm Repeat frequency: 25 kHz

Table 14.11-1: Technical data – optics

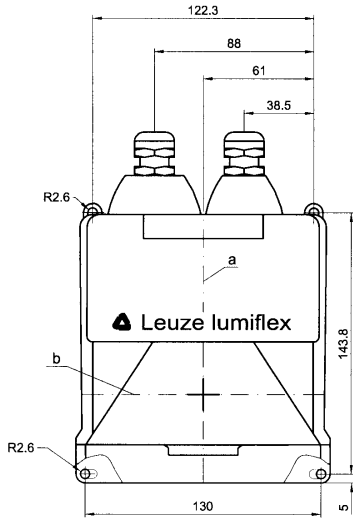
14.12 Environment and Material

Protection type	IP 65 in accordance with IEC 60529
Operating temperature	0 ... + 50 °C
Storage temperature	-20 °C ... + 60 °C
Humidity	DIN 40040 Table 10, Identifying letter E (moderately dry)
Dimensions	140 x 155 x 135 (W x H x D) in mm
Distance from the middle of the scanning plane to the bottom edge of the housing	48.75 mm
Distance from back edge of the housing to the axis of the rotating mirror	68 mm
Connection	2 connectors (plugged in from above)
Control cable length X1	Max. 50 m at a cable cross-section of 0.5 mm ² , shielded Connect shield with PE to the electronics cabinet only
Data cable length X2 RS 232	Max. 10 m
Data cable length X2 RS 422	Max. 50 m (twisted pair)
Transmitter	Infrared laser diode ($\lambda = 905 \text{ nm}$)
Housing	Die-cast aluminum, plastic
Weight	Approx. 2 kg
Dynamic stress across 3 axes	In accordance with IEC 60068 Part 2 - 6, 10 – 150 Hz, max. 5 G
Continuous shock across 3 axes	In accordance with IEC 60068 Part 2 - 29, 10 G, 16 ms
Interference immunity	In accordance with DIN EN 61496-1 (corresponds to requirements for type 4); additionally in accordance with DIN 40839-1/3 test pulses 1, 2, 3a, 3b and 5 (not used for vehicles with internal combustion engines)
Rotating mirror drive	Brushless direct-current motor
Rotating mirror bearing	Maintenance-free ball bearing

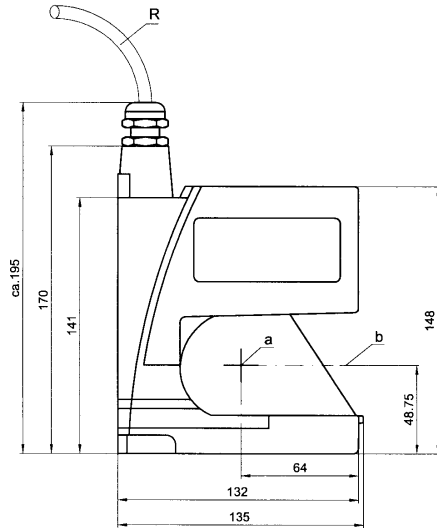
Table 14.12-1: Technical Data on the Environment and Material

14.13 Dimensional drawings of the ROTOSCAN RS4

Front



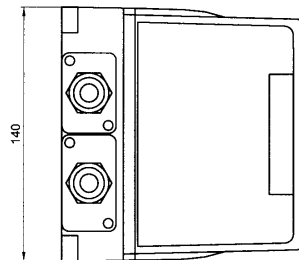
Side view



R = Smallest bending radius = 50 mm
(lumiflex accessory)

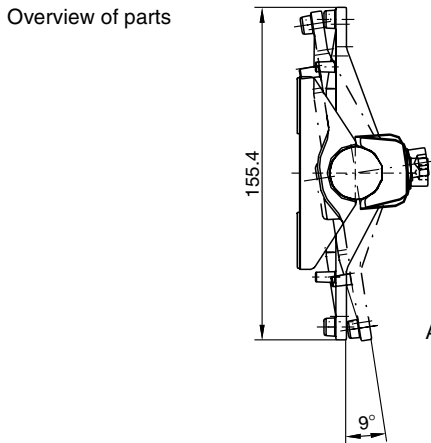
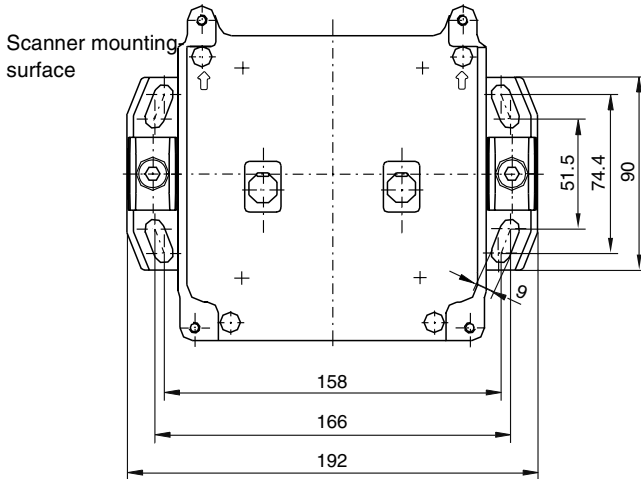
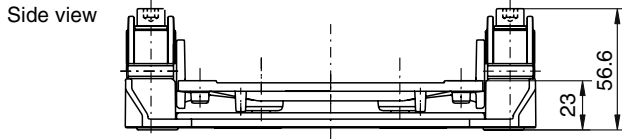
d = Axis of the rotating mirror
b = Scanning plane

All dimensions given in mm



View from above

14.14 Dimensional drawings of the mounting system



All dimensions given in mm

15 Diagnostic Codes and Causes

Location	Description	No.	Description
102	Processing of commands, processing of messages	2	Data transmission error on the X2 interface
103	Control of command processing	2	Data transmission error on the X2 interface
104	Processing of commands, Processing of configuration	2	Data transmission error on the X2 interface
105	Processing of commands, generation of output messages	6	Function, access, command not permitted with currently selected authorization level
201	Processing of the receive protocol	4	Too much data sent over the X2 interface. Message will be overwritten by new message
302	Processing of the transmit protocol	2	The verification of displayed data remained unacknowledged for too long.
306	Output of measurement values	5	Previous message not yet completely output
801	Event processing	2	Event memory cannot be read, internal fault
805	Processing of the commands to the event memory	6	Event memory cannot be transferred. Data transmission error on interface X2
1002	Motor control during initialization	1	Motor does not reach rated speed after start. Internal fault.
1002	Motor control during initialization	2	Motor speed not constant after start. Internal fault.
1110	Test of the switch outputs.	4	Switch outputs (OSSD) have a state other than the one the scanner expected. Possible wiring or control error
1110	Test of the switch outputs.	5	Switch output (OSSD) cannot be switched off
1110	Test of the switch outputs.	6	Switch output (OSSD) cannot be switched on
1111	Short circuit test of switch outputs	7	Short circuit of a switch output (OSSD) with ground
1111	Short circuit test of switch outputs	8	Short circuit of a switch output (OSSD) with Vcc
1606	Motor speed monitoring	4	Motor speed deviation, zero pulse not detected properly, internal fault
1607	Monitoring of duration of a scan	5	Motor speed deviation, motor not at rated speed

Location	Description	No.	Description
1705	Processing of field monitoring light barrier data	1	Signal of a light barrier in optical window monitoring is under the lower limit. Dirty optical window
1705	Processing of field monitoring light barrier data	2	Signal of a light barrier of optical window monitoring is above the upper limit. Fluid media on the optical window
1906	Test of the external watchdog	1	Watchdog is not enabling the OSSDs. There may be a wiring or control error
1906	Test of the external watchdog	2	Watchdog not switching off the OSSDs. Internal fault
1906	Test of the external watchdog	5	Switch outputs (OSSD) have a state other than the one the scanner expected. Possible wiring or control error
1906	Test of the external watchdog	6	Watchdog not switching the cutoff path for the laser. Internal fault
1907	Test of the external watchdog	4	Event detected by watchdog, watchdog switched off (motor speed deviation), scanner housing may be rotating
1907	Test of the external watchdog	7	Event detected by watchdog, watchdog switched off (motor speed deviation), scanner housing may be rotating
2002	Processing of parameter commands	12	The verification of displayed data remained unacknowledged for too long.
2007	Verification of parameter data received	18	The date of the detection zone currently being transferred is older than the date of the detection zone in the scanner
2201	Area monitoring	5	Number of measurements in the scan too small due to motor speed error or switch-off of the watchdog. Internal fuse faulty
2302	Control of software sequence	1	Error occurred while starting the scanner. Sequential error
2401	Reference measurement on the dark reference element	10	No distance value can be calculated for reference measurement. Glare from another source of light (905 nm) or deviation in motor rotation speed

Location	Description	No.	Description
2401	Reference measurement on the dark reference element	13	No removal value can be calculated for reference measurement. Dust in device because connector housing or dummy connector not screwed on
2402	Reference measurement on the light reference element	10	No distance value can be calculated for reference measurement. Glare from another source of light (905 nm) or deviation in motor rotation speed
2701	Processing of messages for system diagnostics	1	Invalid diagnostic command received. Software and firmware incompatible
2702	Processing of requests for diagnostics data	3	Invalid diagnostic value requested. Software and firmware incompatible
2800	Processing of inputs for detection zone changeover	2	2 detection zones active longer than 1 s
2800	Processing of inputs for detection zone changeover	3	The detection zone changeover that occurred does not correspond to the requirement programmed in the scanner.
2800	Processing of inputs for detection zone changeover	4	More than 2 detection zones selected during operation
2800	Processing of inputs for detection zone changeover	6	Unevaluatable data or defective data quality for activation of detection zone
2800	Processing of inputs during scanner operation	8	No detection zone activated during scanner operation
2801	Test of inputs for detection zone changeover	1	Error during testing of inputs for detection zone changeover, internal fault
2802	Initialization of detection zone changeover	3	The detection zone deactivation that occurred does not correspond to the requirement programmed in the scanner.
2802	Initialization of detection zone changeover	4	More than 2 detection zones selected during Power-On
2802	Initialization of detection zone changeover	6	Unevaluatable data or defective data quality for deactivation of detection zone
2802	Initialization of inputs during power-on	8	No detection zone activated during scanner starting
3016	Monitoring the access authorization with one-time password	11	Confirmed one-time password was entered incorrectly

Table 15.0-1: Diagnostic Codes and Causes



EC-Declaration of Conformity

according to Machinery Directive 98/37/EC, Annex II C

Hereby we, Leuze lumiflex GmbH + Co. KG
Liebigstrasse 4
D-82256 Fürstenfeldbruck

declare, that the following described safety device in our delivered version complies with the appropriate basic safety and health requirements of the Machinery Directive 98/37/EC based on its design and type, as brought into circulation by us. In case of alteration of the safety device, not agreed upon by us, this declaration will lose its validity.

Description of the safety device: **Laser scanner for personal protection and measurement tasks**

Safety device type: **ROTOSCAN RS4-4**

Safety classification: **AOPDDR type 3**

Safety function: **Electro-sensitive protective device**

Applied EC-Directives and Standards: Machinery Directive 98/37/EC
EMC Directive 89/336/ECC
DIN EN 60204-1 06.93
DIN EN 61496-1 06.98
IEC 61496-3 02.01
DIN EN 954-1 03.97
DIN V VDE 0801 01.90 and modification A1/10.94
EN 50082-2 02.96
EN 50081-2 03.94

Notified body according to Machinery Directive, Annex VII: TÜV PRODUCT SERVICE GmbH
Zertifizierstelle
Ridlerstrasse 65
D-80339 München

Charged to do: EC - type examination
Examination certificate no. Z10 04 05 22795 044

CE-marking: **The compliance with the directive 89/336/ECC is certified by the CE-mark on the device.**

Fürstenfeldbruck, November 10th, 2004

ppa. Dr. Holger Lehmitz
Director Product Unit
safety at work

ppa. Werner Lehner
Director Product Management



Leuze lumiflex GmbH + Co. KG
Liebigstrasse 4
D - 82256 Fürstenfeldbruck
Telefon +49 8141 / 5350 - 0
Telefax +49 8141 / 5350 - 150
E-Mail: lumiflex@leuze.de
Internet: http://www.leuze.de

Postbank München (BLZ 700 100 80) 185 734 - 807
Deutsche Bank (BLZ 700 700 10) 1972 900
UST-ID-Nr. DE 129 999 527

Kommanditgesellschaft, Sitz Fürstenfeldbruck,
Amtsgericht München HRB 40417,
pers. haftende Gesellschaft:
Leuze electronic Geschäftsführungs-GmbH, Owen,
Amtsgericht Kirchheim/Taack HRB 550
Geschäftsführer: Dr. Hans-Joachim Michael Heyne
Vorsitzender des Verwaltungsrats: Meinert Hahnemann