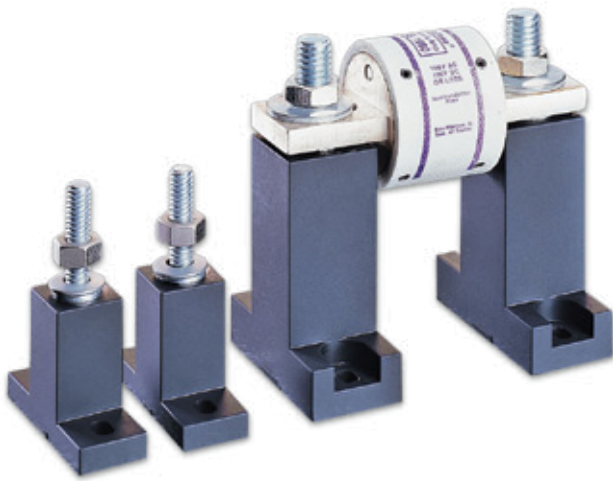


SEMICONDUCTOR FUSE BLOCKS

LSCR Series



Description

Modular-designed Semiconductor fuse blocks are designed to accommodate a wide range of Semiconductor fuses, with a maximum diameter of 3".

Features/Benefits

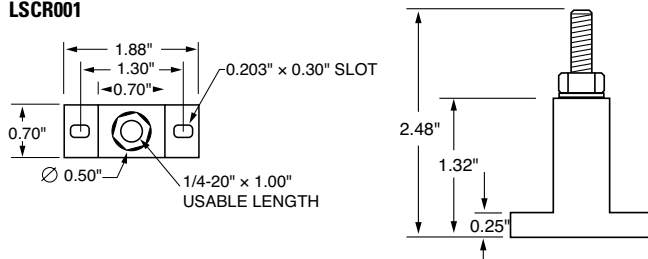
- Modular design reduces inventory requirements
- Sold in pairs for convenience
- Constructed of molded phenolic (with plated steel studs)

Web Resources

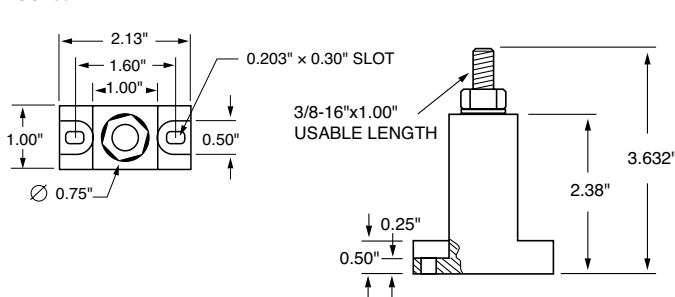
Sample requests, downloadable CAD drawings and other technical information: www.littelfuse.com/lscr

Dimensions in inches

LSCR001



LSCR002



Specifications

- Voltage Rating:** LSCR001: Accepts fuses 1" diameter or less at 600 V
Also accepts 1 1/16" diameter fuses at 700 – 1000 V
LSCR002: Accepts fuses up to 3" diameter at 1000 V
- Ampere Ratings:** LSCR001: 1 – 400 A capacity
LSCR002: 70 – 800 A capacity
- Approvals:** UL Recognized (File No. E14721)
- Stud Size:** LSCR001: 1/4 -20 thread (Torque: 65 in-lbs.)
LSCR002: 3/8 -16 thread (Torque: 192 in-lbs.)
- Base:** Molded phenolic. 150° C temperature rating
- Terminal Construction:** Plated steel. Supplied with nut and Belleville washer

Recommended Fuses

Semiconductor fuses. See tables below.

LSCR001 Semiconductor Fuseblock Selection Guide

FUSE SERIES	AMPERE RATING	PAGE
L15S	70 – 400	68
L25S, LA30QS	35 – 60	68, 71
L25S	70 – 200	68
L50S, LA50QS	35 – 60	68, 72
L50S, LA50QS	70 – 100	68, 72
LA50QS	125 – 200	72
L60S	35 – 60	69
L60S	70 – 100	69
L60S	125 – 200	69
L70S, LA70QS	35 – 60	69, 73-74
L70S, LA70QS	70 – 200	69, 73-74
KLC	1 – 30	69
KLC	35 – 60	69
LA100P	35 – 60	75
LA15QS	70 – 400	70
LA30QS	70 – 200	71

LSCR002 Semiconductor Fuseblock Selection Guide

FUSE SERIES	AMPERE RATING	PAGE
L15S, LA15QS	500 – 800	68, 70
L25S, LA30QS	225 – 700	68, 71
L25S, LA30QS	800	68, 71
L50S, LA50QS	225 – 400	68, 71
L50S, LA50QS	450 – 600	68, 71
L50S, LA50QS	700 – 800	68, 71
L60S	225 – 400	69
L60S	450 – 600	69
L60S	700 – 800	69
L70S, LA70QS	125 – 400	69, 73-74
L70S, LA70QS	450 – 800	69, 73-74
KLC	70 – 100	69
KLC	125 – 200	69
KLC	225 – 400	69
KLC	450 – 800	69
LA100P	125 – 800	75
JLLN	700 – 800	30-31
JLLS	250 – 400	30-31
JLLS	700 – 800	30-31