

Without actuators



LPZ P1 A5

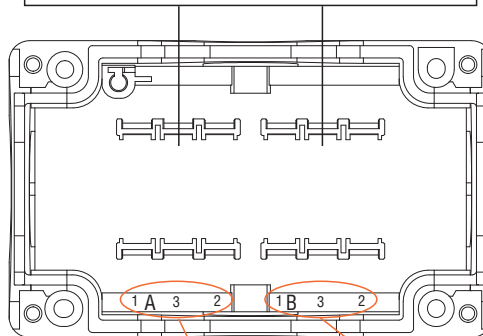


LPZ P3 A8

Order code	Description	Cover colour	Q.ty per pkg	Wt
			n°	[kg]
LPZ P1 A5	For 1 actuator	Yellow	1	0.107
LPZ P1 A8	For 1 actuator	Grey	1	0.107
LPZ P2 A8	For 2 actuators	Grey	1	0.152
LPZ P3 A8	For 3 actuators	Grey	1	0.187
LPZ P4 A8	For 4 actuators	Grey	1	0.200
LPZ P5 A8	For 5 actuators	Grey	1	0.240
LPZ P6 A8	For 6 actuators	Grey	1	0.290

Control station base

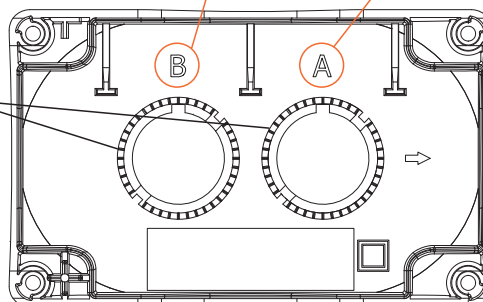
Fixing structures for contact and/or LED elements
For each actuator: Maximum of 3 contacts or 2 contacts and 1 LED



Control station cover (inside view)

Easy identification reference
For actuator and corresponding contact and/or LED elements

Anti-loosening action
Anti-rotation indents to extend fixing ring gripping over time



General characteristics

CONTROL STATIONS WITHOUT ACTUATOR

- 1 to 6 ways
- Compact dimensions
- Easy wiring for base-mount contact and LED elements; possible use of screw and spring-clamp terminal contact or LED elements on the inside surface of the cover using LPX AU120 mounting adapter
- Numerous cable entries.

CONTROL STATIONS WITH ACTUATOR

Standard supplied with actuator, label holder and STOP legend label excluding types with yellow cover, and one base-mount NC contact.

Operational characteristics

- Cable entry:
 - LPZ P1... knockouts:
 - M16/PG11 (1 at rear and 1 on left side)
 - M20/M25/PG13.5/M20 (1 each on top and bottom)
 - LPZ P2 A8 knockouts:
 - M16/PG11 (2 at rear)
 - M20/PG13.5 (1 on each side)
 - M20/M25/PG13.5/M20 (1 each on top and bottom)
 - LPZ P3/P4/P5/P6 A8 knockouts:
 - M16/PG11 (2 at rear)
 - M20/PG13.5 (2 on each side)
 - M20/M25/PG13.5/M20 (1 each on top and bottom)
- Any mounting position allowed
- Tightening torque of cover screws Tmax: 1.8Nm/16lbin
- Ambient conditions:
 - Operating temperature: -25...+70°C
 - Storage temperature: -40...+85°C
- Degree of protection:
 - Per IEC/EN: IP66, IP67 and IP69K
 - Per UL/CSA: Type 1, 2, 3R, 4 4X, 12, 12K.

Materials

Polycarbonate.

Certifications and compliance

Certifications obtained: EAC,CCC; UL Listed for USA and Canada (cULus – File E93601), as Auxiliary Devices; pending at time of catalogue printing: cULus for LPZP6A8 and RINA for all types. Compliant with standards: IEC/EN 60947-1, IEC/EN 60947-5-1, UL508A for types without actuators / UL508 for types complete with actuator, CSA C22.2 n° 14.

With one actuator



LPZ P1 B8 02



LPZ P1 B5 03

Order code	Control station description	Actuator description	Q.ty per pkg	Wt
			n°	[kg]
LPZ P1 B8 01	Grey, 1 way LPZ P1 A8	Mushroom-head button LPC B6744 with STOP legend	1	0.150
LPZ P1 B8 02	Grey, 1 way LPZ P1 A8	Mushroom-head button LPC B6344 with STOP legend	1	0.135
LPZ P1 B5 02	Yellow, 1 way LPZ P1 A5	Emergency stop button LPC B6344	1	0.135
LPZ P1 B5 03	Yellow, 1 way LPZ P1 A5	Emergency stop button LPC B6644	1	0.150

① Version with red emergency stop, turn to release and yellow cover compliant with ISO 13840.