



Product designation	Switch disconnecter with fuse		
Product type designation	GM		
Type of fuse	J		
Number of poles	Nr.	3	
Operating voltage type		AC	
Contact characteristics			
IEC Conventional free air thermal current I _{th}	A	63	
Rated insulation voltage U _i IEC/EN	V	1000	
Rated impulse withstand voltage U _{imp}	kV	12	
Operating current I _e			
AC21A			
400V	A	63	
500V	A	63	
690V	A	63	
AC22A			
400V	A	63	
500V	A	63	
690V	A	63	
AC23A			
400V	A	63	
500V	A	63	
690V	A	63	
Power dissipation per pole max	W	4	
Power dissipation per pole without fuse	W	4	
Max fuse power dissipation			
in open air	W	7.5	
in enclosure	W	7.5	
Rated operational power AC23A			
400V	kW	30	
690V	kW	55	
Rated short time current (1s) I _{cw} (rms)	kA	2.5	
Short-circuit protection with fuse	Class/A	J/60	
Making capacity AC23A 400V	A	630	
Breaking capacity AC23A 400V	A	504	
Mechanical life	cycles	10000	
Electrical life AC21A	cycles	6000	
Mechanical features			
Operating position	normal allowable		Vertical plan Any
Fixing			Screw
Terminals			

	type	Built-in terminal lug	
Tightening torque for terminals	max	Nm	3.5
	max	lbin	2.5

Conductor section	IEC min	mm ²	2.5
	IEC max	mm ²	25
	AWG/kcmil min		14
	AWG/kcmil max		4

UL technical data

UL Standard			UL98
General purpose current rating	A		60
Operating voltage max	V		600
Horsepower/FLA current three phase motor	240V	HP	15/42
	480V	HP	30/40
	600V	HP	52/52
		kA rms	200
Short circuit rating		Class/A	J/60
Short circuit rating with fuse			

Ambient conditions

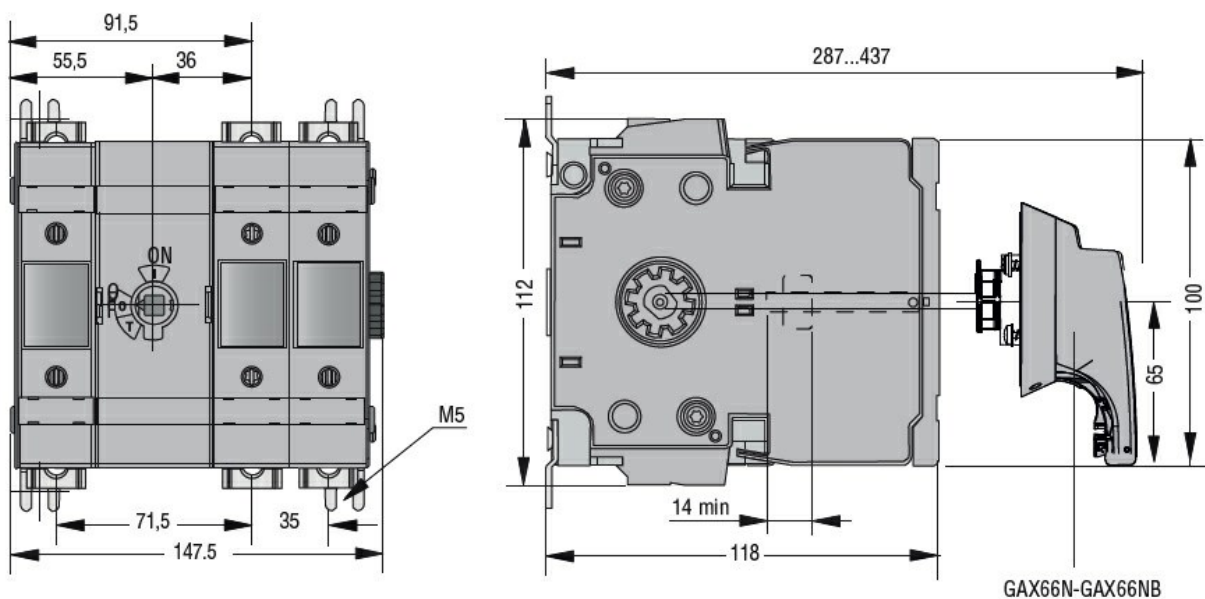
Operating temperature	min	°C	-25
	max	°C	55

Storage temperature	min	°C	-40
	max	°C	70
Max altitude	m		3000

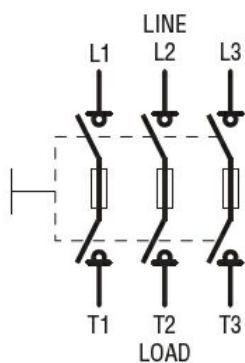
Resistance & Protection

Frontal IP degree			IP20
Pollution degree			3

Dimensions



Wiring diagrams



Certifications and compliance

Compliance

IEC/EN 60947-1

IEC/EN 60947-3

Certifications

cULus according to UL98/CSA C22.2 n°4

ETIM classification

ETIM 8.0

EC000216 -
Switch
disconnecter