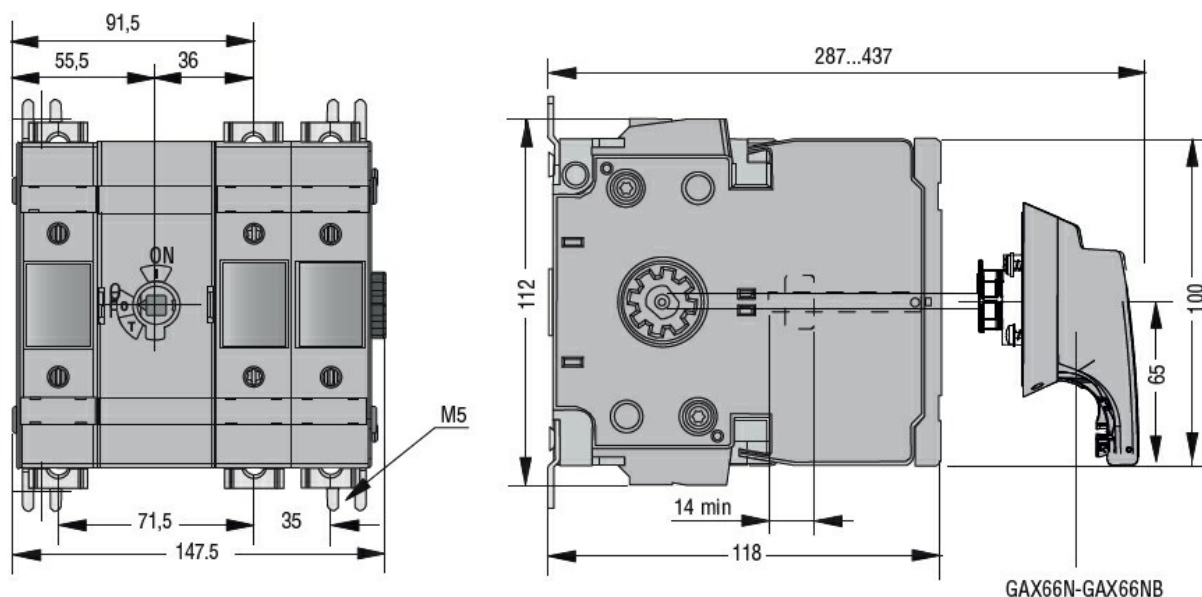


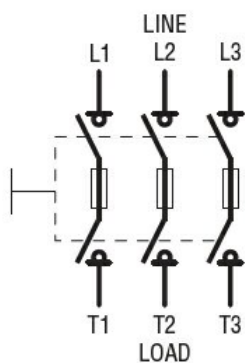
Product designation			Switch disconnecter with fuse
Product type designation			GM
Type of fuse			J
Number of poles		nr.	3
Operating voltage type			AC
Electrical features			
Conventional free air thermal current I <sub>th</sub>		A	63
Rated insulation voltage U <sub>i</sub>		V	1000
Rated impulse withstand voltage U <sub>imp</sub>		kV	12
Operating current			
	AC21A 400V	A	63
	AC21A 500V	A	63
	AC21A 690V	A	63
	AC22A 400V	A	63
	AC22A 500V	A	63
	AC22A 690V	A	63
	AC23A 400V	A	63
	AC23A 500V	A	63
	AC23A 690V	A	63
Power dissipation per pole max		W	4
Power dissipation per pole without fuse		W	4
Max fuse power dissipation			
	in open air	W	7.5
	in enclosure	W	7.5
Rated operational power AC23A			
	400V	kW	30
	690V	kW	55
Rated short time current (1s) I <sub>cw</sub> (rms)		A	2500
Short circuit protection with fuse			J/60
Making capacity AC23A 400V		A	630
Breaking capacity AC23A 400V		A	504
Operations			
Mechanical life		Cycles	10000
Electrical life AC21A		Cycles	6000
Ambient conditions			
Operating temperature			
	min	°C	-25
	max	°C	55
Storage temperature			
	min	°C	-40
	max	°C	70
Max altitude		m	3000
Mechanical features			
Operating position			
	normal allowable		Vertical plan Any
Mounting			Screw
Terminals			
	type		Built-in terminal lug
Tightening torque for terminals			

	max	Nm	3.5
	max	lbft	2.5
Conductor section			
	min (IEC)	mm <sup>2</sup>	2.5
	max (IEC)	mm <sup>2</sup>	25.
	min (AWG)		14
	max (AWG)		4
Weight		g	1135.
Frontal IP degree			IP20
Pollution degree			3
UL technical data			
Compliance			UL98
General purpose current rating		A	60
Operating voltage max		V	600
Horsepower/FLA current three phase motor	240V		15/42
	480V		30/40
	600V		52/52
Short circuit rating		kA	200
Short circuit rating with fuse			J/60

#### Dimensions



#### Wiring diagrams



#### Certifications and compliance

##### Compliance

IEC/EN 60947-1

---

IEC/EN 60947-3

**Certifications**

cULus according to UL98/CSA C22.2 n°4