

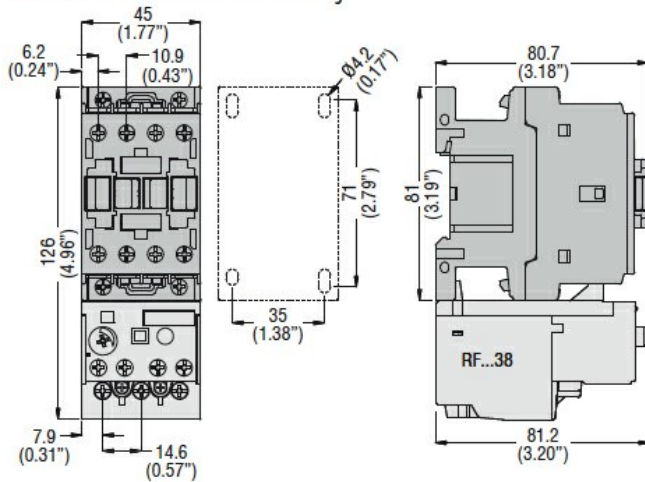


| | | | |
|---|-------------------------|------------------|------|
| Product designation | RF38 | | |
| Product type designation | Motor protection relay | | |
| General characteristics | | | |
| Number of poles | Nr. | 3 | |
| Overvoltage category | III | | |
| Pollution degree | 3 | | |
| Frontal IP degree | IP20 | | |
| Type of release | Thermal | | |
| Protection fuse | | | |
| | gG (IEC) | A | 63 |
| | aM (IEC) | A | 40 |
| | RK5 (UL) | A | 120 |
| Phase failure detection | Yes | | |
| Reset mode | Manual or automatic | | |
| Power circuit characteristics | | | |
| Rated insulation voltage U_i IEC/EN | V | 690 | |
| Rated impulse withstand voltage U_{imp} | kV | 6 | |
| Rated operational voltage | V | 690 | |
| Operational frequency | | | |
| | min | Hz | 0 |
| | max | Hz | 400 |
| Operational current I_e | | | |
| | Operational current min | A | 24 |
| | Operational current max | A | 32 |
| Tripping class | 10A | | |
| Test Button | yes | | |
| Trip indicator | yes | | |
| Terminals | | | |
| | type | screw and washer | |
| | screw | M4 | |
| | width | mm | 12.6 |
| | tool | Phillips 2 | |
| Tightening torque for terminals | | | |
| | min | Nm | 2 |
| | max | Nm | 2.5 |
| | min | lbin | 1.5 |
| | max | lbin | 1.8 |
| Conductor section | | | |
| | AWG/kcmil max | 8 | |
| Auxiliary circuit characteristics | | | |
| Auxiliary contacts | | | |
| | NO | Nr. | 1 |

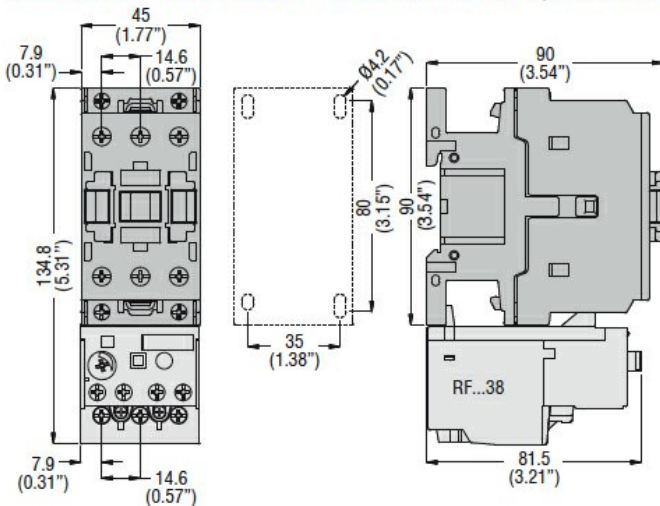
| | | | |
|---|--|-----------------|------------------------------------|
| | NC | Nr. | 1 |
| Auxiliary Rated insulation voltage U_i IEC/EN | | V | 690 |
| Auxiliary Rated impulse withstand voltage U_{imp} | | kV | 6 |
| Auxiliary Rated operational voltage | | V | 690 |
| Operating current AC15 | | | |
| | 24V | A | 3 |
| | 120V | A | 3 |
| | 240V | A | 1.5 |
| | 380V | A | 0.95 |
| | 480V | A | 0.75 |
| | 500V | A | 0.72 |
| | 600V | A | 0.6 |
| Operating current DC13 | | | |
| | 125V | A | 0.11 |
| | 600V | A | 0.22 |
| IEC Conventional free air thermal current I_{th} | | A | 10 |
| Terminals | | | |
| | Auxiliary circuit type | | screw and washer |
| | Auxiliary circuit screw | | M3,5 |
| | Auxiliary circuit width | mm | 8 |
| | Auxiliary circuit tool | | Phillips 2 |
| Conductor section | | | |
| | Auxiliary circuit Flexible w/o lug max | mm ² | 2.5 |
| | Auxiliary circuit Flexible c/w lug max | mm ² | 2.5 |
| Tightening torque for terminals | | | |
| | Auxiliary circuit min | Nm | 0.8 |
| | Auxiliary circuit max | Nm | 1 |
| | Auxiliary circuit min | lbin | 0.59 |
| | Auxiliary circuit max | lbin | 0.74 |
| UL/CSA and IEC/EN 60947-5-1 designation | | | B600-R300 |
| Ambient conditions | | | |
| Operating temperature | | | |
| | min | °C | -25 |
| | max | °C | 60 |
| Storage temperature | | | |
| | min | °C | -50 |
| | max | °C | 70 |
| Compensation temperature | | | |
| | min | °C | -20 |
| | max | °C | 60 |
| Max altitude | | m | 3000 |
| Mechanical features | | | |
| Operating position | | | |
| | normal allowable | | Vertical plan ±30° |
| Fixing | | | Direct mounting on BF09... BF38... |
| Weight | | g | 160 |
| UL technical data | | | |
| Full-load current (FLA) for three-phase AC motor | | | |
| | at 480V | A | 32 |
| | at 600V | A | 32 |

Dimensions

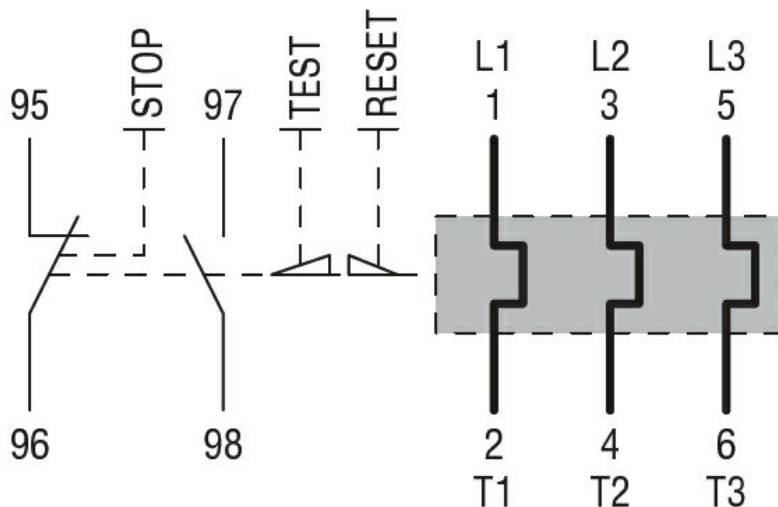
BF00 A... BF09 A... - BF12 A... - BF18 A... - BF25 A... three poles with **RF...38** thermal overload relay



BF26 00A... - BF32 00A... - BF38 00A... three poles with **RF...38** thermal overload relay



Wiring diagrams



Certifications and compliance

Compliance

CSA C22.2 n° 14
IEC/EN 60947-1

IEC/EN 60947-4-1

UL508

Certifications

CCC

cULus

EAC

ETIM classification

ETIM 8.0

EC000106 -
Thermal overload
relay