



Condenser Fan Motors - PSC

5½ inch dia. MARS SERIES **098**



GE Commercial Motors

By Regal-Beloit



Vertical Outdoor Condenser Fan Motors Shaft-Up/Down

GE up/down outdoor condenser fan motors are designed for either vertical shaft-up or shaft-down applications. Shell and end shields are enclosed for weather protection. A weep hole is provided in each end shield to allow condensate to drain. A plastic plug is provided to seal the weep hole in the end shield exposed to the weather. All of these motors are suitable for air conditioning or heat pump applications. All feature reversible rotation, 208-230 volts, six inch shaft length and extended thru bolts extending from both ends.

Features:

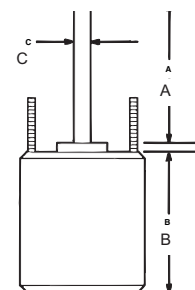
- Thru bolt or band mounting
- All angle mounting
- Ball bearings
- Water slinger on shaft
- Serrated end cap on shaft end only
- For air conditioning or heat pumps
- Full six inch shaft length with two full flats at 90°
- Reversible rotation
- For accessories, see pages M-73 to M-75
- Rheem mtg. holes (mtg. hardware included)



* Heat Shield

Specifications:

- 60 Hertz
- Single phase
- Overload protected
- Fan duty, continuous, air over
- 48 inch leads
- Totally enclosed, non-ventilated
- Class B insulation



Reversible Rotation

MARS NO.	GE NO. 5KCP39	HP	VOLTS	AMPS	RPM ⁽¹⁾	CAP REQ.	DIMENSIONS		
							A	B	C

825 RPM - Single Speed - Standard Efficiency - Ball Bearings - 8 Pole

03201 ⁽³⁾	EGL248S	1/10	208-230	0.80	825	5/370	6.0	4.30	1/2
03202*	DFBA81S	1/8	208-230	0.85	825	5/370	6.0	4.30	1/2
03203*	HFBA79S	1/6	208-230	0.90	825	5/370	6.0	4.30	1/2
03204*	JFBA83	1/4	208-230	1.30	825	7.5/370	6.0	5.03	1/2
03205*	NFBA82S	1/3	208-230	1.80	825	10/370	6.0	5.80	1/2

1075 RPM - Single Speed - Standard Efficiency - Ball Bearings - 6 Pole

03726*	HGU722S	1/6	208-230	1.00	1075	5/370	6.5	3.98	1/2
03732 ⁽²⁾ *	GGU714S	1/4	208-230	1.70	1075	5/370	6.0	4.23	1/2
03733 ⁽²⁾ *	LGU715S	1/3	208-230	2.60	1075	7.5/370	6.0	4.48	1/2
03734 ⁽²⁾ *	RGU718S	1/2	208-230	3.00	1075	10/370	6.0	5.23	1/2
03735 ⁽²⁾ *	SGU717S	3/4	208-230	4.10	1075	10/370	6.0	5.98	1/2

(1) Low speed approximately 300 RPM less than high speed depending on fan load

(2) Both end shields flat, no serrated end cap

(3) 26" leads