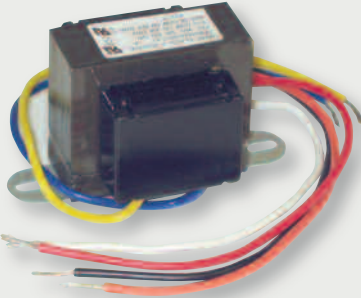




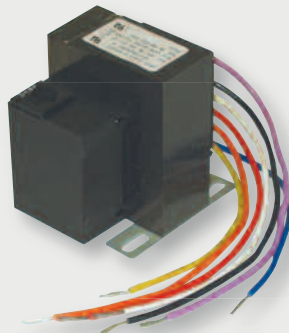
# JARD Foot Mount Transformers

MARS SERIES **445**

COMPONENT



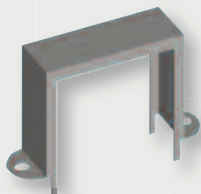
44504



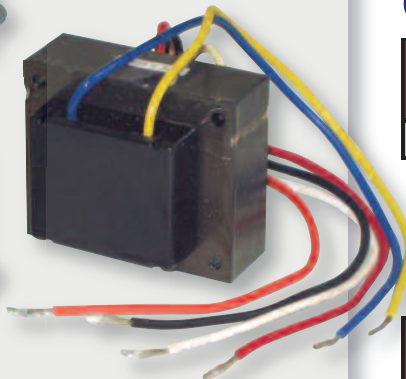
44513



44517



44518



JARD # 4031VM - Includes 2 Brackets

## Open Construction, Wire Leads

- Safety agency approved.

MARS NO.	JARD NO.	VA	PRIMARY VAC	SECONDARY VAC
44501	2031F	20	120/208/240	24
44502	4011F	40	120	24
44503	4021F	40	208/240	24
44504	4031F	40	120/208/240	24
44505	4032F	40	120/208/240	2.5/12/24
44506	40241F	40	240	24
44507	40271F	40	277	24
44508	5031F	50	120/208/240	24
44509	5032F	50	120/208/240	2.5/12/24
44510	7531F	75	120/208/240	24

## Closed Construction With Circuit Breaker

- All models feature a UL recognized manual reset circuit breaker.
- Safety agency approved.

MARS NO.	JARD NO.	VA	PRIMARY VAC	SECONDARY VAC
44511	5041C	50	120/208/240/480	24
44512	6041C	60	120/208/240/480	24
44513	7541C	75	120/208/240/480	24
44514	7541STC	75	120/277/380/575	24
44515 <sup>(1)</sup>	10041C	100	120/208/240/480	24
44516 <sup>(1)</sup>	10041STC	100	120/208/277/575	24

<sup>(1)</sup> Not UL, UL 506

## Closed Construction Quick Connect

MARS NO.	JARD NO.	VA	PRIMARY VAC	SECONDARY VAC
44517	4031OEM	40	120/208/240	24

## Versatile 3-Way Mounting

MARS NO.	JARD NO.	VA	PRIMARY VAC	SECONDARY VAC
44518	4031VM	40	120/208/240	24