

DESCRIPTION	PAGE NUMBER
Bases	
▪ Transition Bases244
▪ Adjustable Motor Bases244
Bearings	
▪ Ball Bearing Conversion Kits242
▪ Roller Bearing Conversion Kits242
Blowers	
▪ Axial Blower Kits242
Brackets	
▪ C-Face Kits - Dripproof (Standard Efficiency)233
▪ C-Face Kits - XRI® Dripproof233
▪ C-Face Kits - Totally Enclosed234
▪ C-Face Kits - IEEE 841235
▪ D-Flange Kits236
▪ B14 FT Flange (IEC C-Face)236
▪ B5 FF Flange (IEC D-Flange)236
▪ Metric Flanges to Reduce Diameter236
Brakes	
▪ Brake Kits - Single and Three Phase237
▪ Brake Kits - Inverter Duty (Black Max® and Blue Max®)237
▪ Double C-Face Coupler Brake237
Capacitor Kits	
▪ Capacitor Mounting Kit239
▪ Capacitor with Mounting Kit239
▪ Oval Run Capacitors239
▪ Capacitor Selection Guide240
Conduit Box	
▪ Cast Iron Conduit Box Kits241
Drip Covers	
▪ Rainshields (48 and 56 Frame)241
▪ Canopy Cover (48-256T Frame)241
Encoder	
▪ Avtron M56 - Black Max®/Blue Max®243
▪ Northstar SL56 - Black Max®/Blue Max®243
▪ Dynapar HS35 - Black Max®/Blue Max®243
▪ BEI HS35 - Black Max®/Blue Max®243
▪ Encoder Stub Shaft Kit243
Explosion Proof	
▪ Explosion Proof Conduit box241
▪ Lead Exit Reducer241
Grounding	
▪ Shaft Grounding Brush Kit243
▪ Replacement Brush243

ACCESSORY KITS

Accessory Kits - Index

DESCRIPTION	PAGE NUMBER
Mounting	
▪ Resilient Mounting Base (includes latches)237
▪ Resilient Mounting Kit238
▪ Split Mounting Rings238
▪ Resilient Ring Kit238
▪ Rubber Mounting Hardware238
▪ Resilient Mount Kit238
▪ 48 Frame Lug Mount Kits238
▪ Length Adapter Kit239
▪ Rheem/Ruud Mounting Kit239
▪ Triangular Bracket239
▪ Fedders Adapter Plate239
Severe Duty Construction (Upgrade Kits)	
▪ Cast Iron Fan Cover and Conduit Box Kits242
Shaft Kits	
▪ Shaft Adapter Sleeve240
▪ Shaft Lock Device240
▪ Blower Wheel Remover240
▪ Tapered Fork240
▪ Brass Punch241
▪ Encoder Stub Shaft Kit243

ACCESSORY KITS

Accessory Kits - Multiplier Symbol S4

C-Face Kits - Dripproof (Standard and EPA Efficiency)

Complete kits with hardware necessary for converting Marathon stock rigid base motors to "C-Face" mounting with rigid base. **(excludes XRI® Dripproof motors)**



CAT. NO.	FRAME	KIT NO.	LIST PRICE	WHERE USED	FOOT NOTES
A435	56	KIT 56CDR-1	\$33	Models with 17mm (203) bearing	
A436	56-143T-145T	KIT 140TCDR-1	\$62	Models with 25mm (205) bearing	75
A606	213T-215T	KIT 210TCDW	\$128	Models containing TTDW, TBDW or TCDW	75
A612	254T-256T	KIT 250TCDX	\$147	Models containing TTDX	75
A610	284T-286T/TS	KIT 280TCDP	\$273	Models containing TTDP or TSTDP	
A287	284T-286T/TS	KIT 280TCDC	\$273	Models containing TTDC or TTDN	
A613	324T-326T/TS	KIT 320TCDP	\$456	Models containing TTDP, TTDC, TSTDP or TSTDC	
A216	364T-365T	KIT 360TCDS	\$601	Models containing TTDS or TTDC	
A219	364TS-365TS	KIT 360TSCDS	\$601	Models containing TSTDS or TSTDC	
A222	404T-405T	KIT 400TCDS	\$657	Models containing TTDS	
A225	404TS-405TS	KIT 400TSCDS	\$657	Models containing TSTDS	
A228	444T-445T	KIT 440TCDS	\$1,257	Models containing TTDS	
A231	444TS/445TS	KIT 440TSCDS	\$1,257	Models containing TSTDS	
A293	447TS/449TS	KIT 440TSCDN	\$1,257	Models containing TSTDN	

C-Face Kits - XRI® Dripproof

CAT. NO.	FRAME	KIT NO.	LIST PRICE	WHERE USED	FOOT NOTES
A600	143T-145T	KIT 175181	\$62	U244, U758, U265, U245, U759, U246, and U760	75
A436	143T-145T	KIT 140TCDR-1	\$62	E927, E928, and E929	75
A602	213T-215T	KIT 175066	\$127	U268, U269, U763, U764, U765 and U766	75
A622	254T-256T	KIT 175067	\$146	U254, U255, U767, U768, U769 and U770	75
A626	284T-286T	KIT 175058	\$272	U256, U257, U771, U772, U773 and U774	
A627	324T-326T	KIT 175059	\$455	U775, U776, U777, U778, U798 and U799	
A628	364T-365T	KIT 175060	\$600	U779, U782, U783, U784, U927 and U928	
A216	364T-365T	KIT 360TCDS	\$601	E921	
A222	404T-405T	KIT 400TCDS	\$657	E922, E923, U270 and U271	
A225	404TS-405TS	KIT 400TSCDS	\$657	U250 and U251	
A228	444T-445T	KIT 440TCDS	\$1,257	U272, U273, E924, E925 and E926	

Footnotes:

75 Addition of C-Face kits may result in non-NEMA "BA" dimension. For the resulting "BA" dimension, consult chart found in the Modification Section.

Accessory Kits - Multiplier Symbol S4

C-Face Kits - Totally Enclosed



Complete kits with hardware necessary for converting Marathon stock rigid base motors to "C-Face" mounting with rigid base. **(excludes IEEE-841 stock motors)**

CAT. NO.	FRAME	KIT NO.	LIST PRICE	WHERE USED	FOOT NOTES
A437	56	KIT 56CFR-1	\$33	Models with 17mm bearing (standard frame)	
A438	56-143T-145T	KIT 140TCFR-1	\$62	Frame models with 25mm bearing or 143T and 145T Frame, models containing TBFR, TCFR, TTTR or TTFR	75
A603	143T	KIT 143TCFN	\$62	Models containing TTFN, TTTC or TTTN	75,76
A655	145T	KIT 145TCFN	\$62	Models containing TTFN, TTTC or TTTN	75,76
A643	182T-184T	KIT 175296	\$91	Use on model numbers 182TTFR4026 and 184TTFR4026 (8-1/2"AK), 182TTFR4040, 184TTFR4040	75
A644	182T-184T	KIT 180CF8.5-1	\$91	Models containing TTTL, TCFR, TBFR, TCFL, TTFL, TTFR, or TTFS, TTFC, TTTS or THTS (Standard 8-1/2" AK dim.)	75
A645	182T-184T	KIT 180CF4.5-1	\$91	Models containing TTFL, TTFR, TTFC or TTFS (Non-Std. 4-1/2" AK dim.)	75
A609	213T-215T	KIT 210TCFW	\$128	Models containing TTFW or TBFW	75
A204	213T-215T	KIT 210TCFL	\$128	Models containing TTFR, TTFL or TBFL	75
A206	213T-215T	KIT 210TCFS	\$128	Models containing TTFS, THFS, TTFC, TTTS and THTS (except 213TTFC4076 and 215TTFC4076)	75
A652	213T-215T	KIT 175068	\$128	Use on models 213TTFC4076 and 215TTFC4076	75
A209	254T-256T	KIT 250TCFL	\$147	Models containing TTFL and THTL (254TTFL4076)	75
A1209	254-256T	KIT 250TCFL-R	\$147	Models containing TTFL1 and THTL1 (current frame design) (254TTFL14076)	
A601	254T-256T	KIT 250TCFP	\$147	Models containing TTFC (except 254TTFC4076 and 256TTFC4076)	75
A284	254T-256T	KIT 250TCFNA	\$147	Models containing TTFNA and THTNA	75
A239	254T-256T	KIT 250TCFPA	\$147	Models containing TTFPA, THTPA and TSTFPA	75
A653	254T-256T	KIT 175191	\$147	Use on model numbers 254TTFC4076 and 256TTFC4076	75
A611	284T-286T/TS	KIT 280TCFP	\$273	Models containing TTFP, THFP, TTFC, TSTFP or TSTFC (except 284TTFC4076 and 286TTFC4076)	
A617	284T-286T/TS	KIT 280TCFPA	\$273	Models containing TTFPA, THFPA and TSTFPA	
A615	284T-286T/TS	KIT 280TCFN	\$273	Models containing TTFN or TSTFN	
A654	284T-286T	KIT 175061	\$273	Use on model numbers 284TTFC4076 and 286TTFC4076	
A618	284T-286T/TS	KIT 280TCFNA	\$273	Models containing TTFNA, THFNA or TSTFNA	
A214	324T-326T/TS	KIT 320TCFS	\$473	Models containing TTFS, THFS or TSTFS	
A614	324T-326T/TS	KIT 320TCFP	\$473	Models containing TTFP, THFP, TTFC, TSTFP or TSTFC	
A619	324T-326T/TS	KIT 320TCFPA	\$473	Models containing TTFPA, THFPA or TSTFPA	
A217	364T-365T	KIT 360TCFS	\$601	Models containing TTFC	
A395	364T-365T	KIT 360TCFSR	\$601	Models containing TTFS or THFS	
A396	364TS-365TS	KIT 360TSCFSR	\$601	Models containing TSTFS or TSHFS	
A223	404T-405T	KIT 400TCFS	\$657	Models containing TTFS or THFS	
A226	404TS-405TS	KIT 400TSCFS	\$657	Models containing TSTFS or TSHFS	
A229	444T-445T	KIT 440TCFS	\$1,257	Models containing TTFS or THFS	
A232	444TS-445TS	KIT 440TSCFS	\$1,257	Models containing TSTFS or TSHFS	
A620	444T-445T	KIT 440TCFN	\$1,257	Ball bearing models containing TTFN or THFN	
A621	444TS-445TS	KIT 440TSCFN	\$1,257	Models containing TSTFN or TSHFN	
A623	447/9T	KIT 449TCFS	\$1,257	Ball bearing models containing TTFS or THFS	
A624	447/9TS	KIT 449TSCFS-1	\$1,257	2-Pole models containing TSTFS (313 bearing)	
A625	447/9TS	KIT 449TSCFS-2	\$1,257	4-, 6-, and 8-Pole models containing TSTFS (318 bearing)	

Footnotes:

75 Addition of C-Face kits may result in non-NEMA "BA" dimension. For the resulting "BA" dimension, consult chart found in the Modification Section.

76 Addition of C-Face kits in non-NEMA "AH" dimension. NEMA "AH" is 2.12", rework "AH" is 2.38".

Accessory Kits - Multiplier Symbol S4

C-Face Kits - Totally Enclosed

C-Face Kits - IEEE841 Motors

Complete Kits with hardware and Inpro/Seal® necessary for converting Marathon stock IEEE-841 rigid base motors to "C-Face" mounting with rigid base.

CAT. NO.	FRAME	KIT NO.	LIST PRICE	COMMENTS	FOOT NOTES
A181	143T	KIT 143TCTN - 841	\$130	Use on 143T IEEE 841 models with THTN in the model no.	75,76
A262	145T	KIT 145TCTN - 841	\$130	Use on 145T IEEE 841 models with THTN in the model no.	75,76
A182	182T - 184T	KIT 180TCFS - 841	\$184	Use on 182T and 184T IEEE 841 models with THTS or THFS in the model no.	75
A183	213T - 215T	KIT 210TCFS - 841	\$248	Use on 213T and 215T IEEE 841models with THTS or THFS in the model no.	75
A184	254T - 256T	KIT 250TCFNA - 841	\$284	Use on 254T and 256T IEEE 841 models with THFNA in the model no.	75
A185	284T - 286T	KIT 280TCFN - 841	\$532	Use on 284T and 286T IEEE 841 motors with THFN or TSHFN in the model no.	
A186	284T - 286T	KIT 280TCFNA - 841	\$532	Use on 284T and 286T IEEE 841 motors with THFNA or TSHFNA in the model no.	
A187	324T - 326T	KIT 320TCFS - 841	\$873	Use on 324T and 326T IEEE 841 models with THFS or TSHFS in the model no.	
A188	364T - 365T	KIT 360TCFSR - 841	\$1,093	Use on 364T and 365T IEEE 841 models with THFS in the model no.	
A189	364TS - 365TS	KIT 360TSCFSR - 841	\$1,093	Use on 364TS and 365TS IEEE 841 models with TSHFS in the model no.	
A190	404T - 405T	KIT 400TCFS - 841	\$1,200	Use on 404T and 405T IEEE 841 models with THFS in the model no.	
A192	444T - 445T	KIT 440TCFS - 841	\$1,669	Use on 444T and 445T IEEE 841 models with THFS in the model no.	
A193	444TS - 445TS	KIT 440TSCFS - 841	\$1,669	Use on 444TS and 445TS IEEE 841 models with TSHFS in the model no.	
A194	444T - 445T	KIT 440TCFN - 841	\$1,669	Use on 444T and 445T IEEE 841 models with THFN in the model no.	
A195	444TS - 445TS	KIT 440TSCFN - 841	\$1,669	Use on 444TS and 445TS IEEE 841 models with TSHFN in the model no.	

ACCESSORY KITS

Footnotes:

75 Addition of C-Face kit may result in non-NEMA "BA" dimension. For the resulting "BA" dimension, consult the chart found in the Modification Section.

76 Addition of C-Face kit results in non-NEMA "AH" dimension. NEMA "AH" is 2.12", rework "AH" is 2.38".

Accessory Kits - Multiplier Symbol S4

IEC Mounting Kits

Complete kits with hardware necessary for converting Marathon IEC stock motors to B5 and B14 mountings.

FT - Flange B14 Mounting Kits For Aluminum Frame Motors Only

Frame	CAT. NO.	KIT NO.	List Price	Bolt Circle "mm"
63	A561	KIT 631475	\$43	75
71	A562	KIT 711485	\$47	85
80	A563	KIT 8014100	\$53	100
90	A564	KIT 9014115	\$58	115

FF - Flange B5 Mounting Kits For Aluminum Frame Motors Only

Frame	CAT. NO.	KIT NO.	List Price	Bolt Circle "mm"
63	A569	KIT 635115	\$47	115
71	A570	KIT 715130	\$55	130
80	A571	KIT 805165	\$60	165
90	A572	KIT 905165	\$63	165

FT - Flange B14 Mounting Kits For Cast Iron Frame Motors Only

Frame	CAT. NO.	KIT NO.	List Price	Bolt Circle "mm"
100	A565	KIT 10014130	\$77	130
112	A566	KIT 11214130	\$84	130
132	A567	KIT 13214165	\$112	165
160	A568	KIT 16014215	\$219	215

FF - Flange B5 Mounting Kits For Cast Iron Frame Motors Only

Frame	CAT. NO.	KIT NO.	List Price	Bolt Circle "mm"
100	A573	KIT 1005215	\$84	215
112	A574	KIT 1125215	\$90	215
132	A575	KIT 1325265	\$120	265
160	A576	KIT 1605300	\$227	300
180	A577	KIT 1805300	\$281	300
200	A578	KIT 2005350	\$367	350
225	A579	KIT 2255400	\$470	400

Metric Flanges To Reduce Diameter For Aluminum Frame Motors Only

Motor Frame	New Frame Diameter	CAT. NO.	KIT NO.	Kit Only List Price
63	56	A585	KIT 175900	\$39
71	63	A586	KIT 175901	\$45
80	71	A587	KIT 175902	\$50
90	80	A588	KIT 175903	\$53

D-Flange Kits

Complete kits with hardware necessary for converting Marathon **stock rigid base** motors to D-Flange mounting with rigid base.

CAT. NO.	FRAME	ENCLOSURE	KIT NO.	LIST PRICE	WHERE USED	FOOT NOTES
A647	254T-256T	TEFC	KIT 250TDFPA	\$363	Models containing TTFPA	97
A648	254T-256T	TEFC	KIT 250TDFNA	\$363	Models containing TTFNA	97
A649	254T-256T	TEFC	KIT 649R	\$363	Models containing TTFP or TTFC	97
A650	284T-286T/TS	DRIPPROOF	KIT 650R	\$638	Models containing TTDP, TTDC, TSTDP or TSTDC	
A651	284T-286T/TS	TEFC	KIT 651R	\$638	Models containing TTFP, TTFC, TSTFP or TSTFC	
A656	284T-286T	TEFC	KIT 280TDFNA	\$638	Models containing TTFNA	97
A657	324T-326T	TEFC	KIT 320TDFPA	\$721	Models containing TTFPA or TSTFPA	97
A637	364T-365T	TEFC	KIT 360TDFC	\$852	Models containing TTFC	

Complete kits with hardware necessary for converting Marathon **stock C-Face rigid base** motors to D-Flange mounting with rigid base.

CAT. NO.	FRAME	ENCLOSURE	KIT NO.	LIST PRICE	WHERE USED	FOOT NOTES
A630	182TC-184TC	TEFC	KIT 180TDFR	\$143	Models containing TTFR	d
A631	284TC-286TC	TEFC	KIT 280TDFP	\$639	Models containing TTFP	d
A632	324TC-326TC	TEFC	KIT 320TDFP	\$782	Models containing TTFP	d
A634	405TC	TEFC	KIT 400TDFS	\$1,066	Models containing TTFS	d

Footnotes:

d To be discontinued after current stock is gone

97 Addition of D-Flange kit will result in non-NEMA "BA" dimension (1/2" longer than NEMA) and non-NEMA shaft extension (1/2" shorter than NEMA).

Accessory Kits - Multiplier Symbol S4

Brake Kits - Single and Three Phase Motors

These kits include a brake mounted to an external cast aluminum fan guard. Designed for easy field installation on Marathon's Four-In-One motors, 56, 143 and 145 frames only.

TORQUE RATING LB-FT	LIST PRICE	KIT WGT.	115/230 VOLT		208-230/460 VOLT		575 VOLT	
			CAT. NO.	KIT NO.	CAT. NO.	KIT NO.	CAT. NO.	KIT NO.
3	\$355	7	A306	KIT 3BRK1	A301	KIT 3BRK3	A297	KIT 3BRK3A
6	\$419	7	A307	KIT 6BRK1	A302	KIT 6BRK3	A298	KIT 6BRK3A
10	\$518	10	—	—	A303	KIT 10BRK	A299	KIT 10BRKA

Selection Chart
(Used to select brake size)

MOTOR HP	BRAKEMOTOR SHAFT RPM		
	LB-FT @3600	LB-FT @1800	LB-FT @1200
1/4	—	—	3
1/3	—	3	3
1/2	3	3	3
3/4	3	6	6
1	3	6	6
1.5	6	10	10
2	6	10	—

Brake Kits - Inverter Duty (TENV Black Max® and Blue Max® Motors)

TORQUE RATING LB-FT	LIST PRICE	115/208-230 VOLT		208-230/460 VOLT		575 VOLT	
		CAT. NO.	KIT NO.	CAT. NO.	KIT NO.	CAT. NO.	KIT NO.
6	\$638	A317	KIT BM6BRK115	A312	KIT BM6BRK	A315	KIT BM6BRK575
10	\$775	A318	KIT BM10BRK115	A313	KIT BM10BRK	A316	KIT BM10BRK575

For normal (140%) torque rating, do not apply on motors larger than 2 HP. Reduced braking torque and/or longer stopping times can result from applying an undersized brake on higher HP motors.

See page 230 for encoder kit for installation between motor and brake.

These brake kits fit on both Black Max® and Blue Max® TENV motors (See pages 175 and 177). These can also be used together with the Double C-Face SL56 encoder to make a closed loop inverter brake motor.

Vertical Modification Kit (Stearns 87000-series)

Includes required hardware to accommodate vertical-above or vertical-below mounting.

CAT. NO.	KIT NO.	LIST PRICE
A157	KIT VRT87BRK	\$375

Double C-Face Coupler Brakes

Double C-Face brakes are designed to fit any NEMA 56C, 143TC, or 145TC motor. These spring-set electrically released disc brakes feature a simple 4-bolt, 2-wire installation and a manual release knob. A 5/8" to 7/8" adapter sleeve, included, allows installation on either 56C or 143TC/145TC motors with a resulting NEMA 56C or 143TC/145TC face and shaft. Dual voltage coils are suitable for 208-230/460 volt three phase motors and 115/208-230 volt single phase motors wired on the **high voltage** connection. Available in three different enclosures, suitable for use on drip-proof motors (NEMA 2/IP-23), totally enclosed (NEMA 4/IP-54) and washdown duty (NEMA 4X/IP-55).



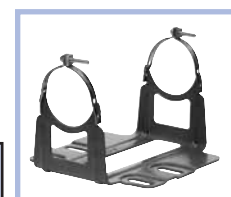
The NEMA 4X, IP55 coupler brakes are specifically designed for use with PowerWash™ Washdown Duty motors. Painted with a special white epoxy food-safe paint, these brakes are BISSC Certified.

ENCLOSURE NEMA2, IP-23 208-230/460V	CAT. NO.	KIT NO.	LIST PRICE	ENCLOSURE NEMA4, IP-54 208-230/460V	CAT. NO.	KIT NO.	LIST PRICE	ENCLOSURE NEMA4X, IP-55 208-230/460V	CAT. NO.	KIT NO.	LIST PRICE
3 ft. lb.	A903	KIT 903	\$473	3 ft. lb.	A906	KIT 906	\$582	3 ft. lb.	A909	KIT 909	\$674
6 ft. lb.	A904	KIT 904	\$528	6 ft. lb.	A907	KIT 907	\$657	6 ft. lb.	A910	KIT 910	\$729
10 ft. lb.	A905	KIT 905	\$601	10 ft. lb.	A908	KIT 908	\$729	10 ft. lb.	A911	KIT 911	\$801

Resilient Mounting Base

Used to add a Resilient Base to models having Resilient Rings. Results in 3" shaft height. Kit includes: mounting base and 2 latch assemblies.

RING TO RING DIMENSION	CAT. NO.	KIT NO.	LIST PRICE
6.37"	A107	KIT 107-637	\$11



Accessory Kits - Multiplier Symbol S4

Resilient Mounting Kit

Used to add a resilient base to models having hubs only. 3-1/2" shaft height.

Kit includes: mounting base, 2 resilient rings, 2 latch assemblies, 2 end caps and a slinger.



KIT CAT. NO.	KIT NO.	USED WITH CAT. NO.	BASE LENGTH	LIST PRICE
A279	KIT 279	X500	8-5/8"	\$19
A280	KIT 280	X501, X511, X208	9-1/8"	\$19
A281	KIT 281	X507, X509	11-5/8"	\$42
A282	KIT 282	X503	10-5/8"	\$37
A283	KIT 283	X502, X207	9-5/8"	\$37
A308	KIT 308	X206	10-1/8"	\$37

Split Mounting Rings

Used for adapting a 2-1/4" Resilient Mounting Ring to 2-1/2". Kit includes: 4 split rings.



CAT. NO.	KIT NO.	LIST PRICE
A104	KIT 104	\$7

Resilient Ring Kit

Used to mount Resilient Rings onto Hubbed PSC Brackets. Kit includes: 2 rubber resilient rings and 4 split rings.



CAT. NO.	KIT NO.	LIST PRICE	NOTES
A110	KIT 110	\$10	2-1/4" (48 frame)
A114	KIT 114	\$14	2-1/2" (56 frame)

Rubber Mounting Hardware

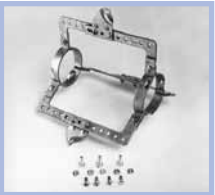
Used for mounting the resilient base to a resilient ring. Kit includes: 4 clamps, 2 screws, and 2 nuts.



CAT. NO.	KIT NO.	LIST PRICE	NOTES
A112	KIT 112	\$7	56 Frame
A113	KIT 113	\$7	48 Frame

Resilient Mount Kit

Fits 48 Frame motors with 2-1/2" diameter resilient rings. Available in 3 sizes to fit 9", 10" and 12" blowers.



CAT. NO.	KIT NO.	SIZE	LIST PRICE
A240	KIT 240	9"	\$36
A241	KIT 241	12"	\$54
A242	KIT 242	10"	\$44

48 Frame Lug Mounts Kits



A249
Single Strap,
Dual Slot
2" L, 1/4" & 3/4" W
\$17



A250
Double Strap,
Dual Slot
2" L, 1/4" & 3/4" W
\$17



A251
Double Strap,
Dual Slot
4" L, 1/4" & 3/4" W
\$17



A252
Single Strap,
Single Slot
2" L x 3/8" W
\$17



A253
Double Strap,
Single Slot
2" L x 3/8" W
\$17



A254
Double Wire,
Single Slot
2" L x 3/8" W
\$17

Accessory Kits - Multiplier Symbol S4

Length Adapter Kit

Used to convert Hubless motors to Resilient Ring mount. One adapter bracket can be mounted directly to original motor bracket and the other is mounted on the motor's thru-bolts and can be adjusted to desired length. Kit includes: 2 adapters, 2 resilient rings, 4 split rings, and the necessary nuts, screws, and washers.



CAT. NO.	KIT NO.	LIST PRICE
A111	Kit 111	\$15

Rheem/Ruud Mounting Kit

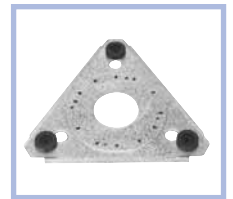
Used to replace a Rheem/Ruud condenser fan motor where the original was held in place by four cables. Kit includes: prepunched plated steel plate, 4-8x32 nuts with washer fastened, 4-10x32 nuts with washers fastened and 4-1/4" sheet metal screws. Instructions included.



CAT. NO.	KIT NO.	LIST PRICE
A259	Kit 259	\$22

Rheem/Ruud Mounting Kit

Used in Fedders air conditioners.



CAT. NO.	KIT NO.	LIST PRICE
A277	Kit 277	\$22

Fedders Adapter Plate

Used to match Fedders rectangular mounting stud pattern on 5-5/8" motors.

CAT. NO.	KIT NO.	LIST PRICE
A278	Kit 278	\$12

Capacitor Mounting Kit

Used for mounting a capacitor on the frame of a Permanent Split Capacitor motors. Kit includes: mounting strap, mounting screws, and terminal protection boot. (4 screws are included - 2#10 screws and 2#8 screws). **Fits 10mfd. and smaller capacitors only.**



CAT. NO.	KIT NO.	LIST PRICE
A100	Kit 100	\$7

Capacitor with Mounting Kit

Kit includes 370 volt capacitor, mounting strap, mounting screws and terminal protection boot.

CAT. NO.	KIT NO.	SIZE	LIST PRICE
A243	Kit 243	5.0 mfd	\$14
A244	Kit 244	7.5 mfd	\$17
A245	Kit 245	10.0 mfd	\$19

Oval Run Capacitors



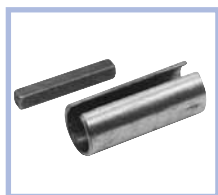
SIZE	CAT. NO.	KIT NO.	LIST PRICE
3mfd/370v	A371	KIT 370-3	\$8
4mfd/370v	A372	KIT 370-4	\$8
5mfd/370v	A373	KIT 370-5	\$8
7.5mfd/370v	A375	KIT 370-7.5	\$10
10mfd/370v	A376	KIT 370-10	\$10
15mfd/370v	A378	KIT 370-15	\$17
17.5mfd/370v	A379	KIT 370-17.5	\$17
20mfd/370v	A380	KIT 370-20	\$19
25mfd/370v	A381	KIT 370-25	\$21
30mfd/370v	A382	KIT 370-30	\$24
7.5mfd/440v	A445	KIT 440-7.5	\$15
10mfd/440v	A446	KIT 440-10	\$17

Accessory Kits - Multiplier Symbol S4

Capacitor Selection Guide for Stock PSC Motors

370 VOLT											440 VOLT						
3.0 mfd	4.0 mfd	5.0 mfd					7.5 mfd	10.0 mfd	15.0 mfd	17.5 mfd	20.0 mfd	25.0 mfd	30.0 mfd	7.5 mfd	10.0 mfd		
X411	X223	X001	X048	X069	X210	X417	X000	X294	X004	X453	X009	X433	X206	X462	X271	X454	X237
X427	X273	X003	X049	X070	X212	X418	X002	X413	X010	X458	X016		X447	X449	X448	X446	X241
X429	X281	X006	X050	X080	X215	X419	X005	X415	X021		X023		X242			X405	
		X011	X052	X081	X216	X420	X013	X422	X033		X027						
		X012	X056	X082	X217	X423	X015	X424	X035		X036						
		X014	X057	X083	X219	X428	X018	X426	X038		X039						
		X017	X058	X086	X222	X430	X020	X450	X063		X085						
		X019	X059	X087	X233	X440	X022	X456	X068		X090						
		X034	X060	X088	X234	X441	X037	X457	X084		X099						
		X040	X061	X089	X236	X442	X071	X465	X096		X205						
		X041	X062	X097	X258	X443	X203		X098		X207						
		X042	X064	X200	X278	X445	X213		X208		X218						
		X043	X065	X202	X287	X463	X214		X211		X298						
		X044	X066	X204	X295	X464	X225		X221		X444						
		X045	X067	X209	X297	X262	X231		X400		X452						
					X412		X283		X414		X455						
									X416		X459						
									X451								

Shaft Adapter Sleeve



Used to increase the diameter of a shaft to a larger size. Available sizes include converting from a 1/2" dia. shaft with flat to a 5/8" dia. with key and from a 5/8" dia. with key to a 3/4" dia. with key. Kit includes adapter sleeve and key.

CAT. NO.	KIT NO.	TO CHANGE SHAFT	LIST PRICE
A105	KIT 105	1/2" to 5/8"	\$7
A106	KIT 106	5/8" to 3/4"	\$10

Shaft Lock Device



Used as a pry point for prying the blade off. Instructions included.

CAT. NO.	KIT NO.	LIST PRICE
A257	KIT 257	\$42

Blower Wheel Remover



Used to pull off corroded, rusted, stubborn blower wheels from 5/8" diameter shafts and smaller. Comes with complete instructions.

CAT. NO.	KIT NO.	LIST PRICE
A256	KIT 256	\$132

Tapered Fork



Used for prying off pulleys, fan blades, etc., from any shaft 5/8" diameter or smaller. Long 16" handle gives good leverage. Instructions included.

CAT. NO.	KIT NO.	LIST PRICE
A258	KIT 258	\$55

Accessory Kits - Multiplier Symbol S4

Brass Punch

Used for placing between your hammer and a motor's shaft or bearing. 3/4" diameter x 6" length.

CAT. NO.	KIT NO.	LIST PRICE
A261	KIT 261	\$19



Encoder Stub Shaft Kit

CAT. NO.	KIT NO.	LIST PRICE	MULT SYMBOL	WHERE USED
A807	KIT STUBSHAFT 1IN	\$150	E3	Fits XRI Severe Duty or XRI IEEE-841 motors to allow addition of 1" bore hollow shaft encoders. (182-449 TEFC)

Rain Shields

Sizes to fit 1/2" or 5/8" diameter shafts. 6.88" diameter. Shield has 8 air vanes to provide cooling air circulation for motor. For vertical shaft down applications. Rain shield mounts over shaft

CAT. NO.	KIT NO.	SHAFT DIA.	LIST PRICE
A247	KIT 247	1/2"	\$7
A248	KIT 248	5/8"	\$7



Drip Cover Kit

CAT. NO.	FRAME	KIT NO.	ENCLOSURE	LIST PRICE
A234	48-184T("629")	KIT 234	ODP OR TEFC	\$21
A201	182T-184T	KIT 201	ODP	\$24
A662	182T-184T	KIT 175614	ODP (Models w/"CF" footnote)	\$55
A197	182T-184T	KIT 197	TEFC (4-IN-1)	\$24
A202	213T-215T	KIT 202	ODP (TTDR)	\$28
A198	213T-215T	KIT 198	ODP (TTDW)	\$28
A199	213T-215T	KIT 199	TEFC (4-IN-1)	\$28
A311	254T-256T	KIT 311	ODP (TTDX) Rigid Base	\$28

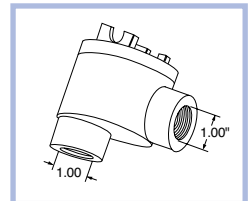
Mounts with two screws into the end bracket. Kit includes: drip cover, mounting screws, washers, and instructions. Contact Marathon Electric to determine compatibility with motor. For vertical shaft down applications.

Note: Kit 234, the mounting holes have a 4.80 bolt circle.

Conduit Box Kit (56/140 Frame Explosion Proof Motors)

For installation on rolled steel 56/140 frame explosion proof motors. Lead exit holes are 1" dia. NPT.

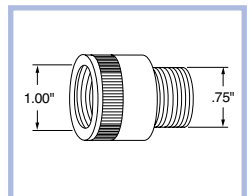
CAT. NO.	KIT NO.	LIST PRICE
A800	KIT 56 EXPR BOX	\$83



Lead Exit Reducers (56/140 Frame Explosion Proof Motors)

For reducing the lead exit from 1" to 3/4". Kit LDRDCR-M has an externally threaded 3/4" exit and internally threaded 1" exit.

CAT. NO.	KIT NO.	LIST PRICE
A803	KIT LDRDCR-M	\$15



CAT. NO.	FRAME	KIT NO.	LIST PRICE
A720	182-215T	KIT 180/210CB	\$71
A722	254T-256T	KIT 250CB	\$118
A729	284T/TS-286T/TS	KIT 280CB	\$159
A730	324T/TS-326T/TS	KIT 320CB	\$177

Cast Iron Conduit Box Kits

Fits standard Blue Chip® motors. Threaded conduit box and gaskets.

Accessory Kits - Multiplier Symbol S4

Severe Duty - Upgrade to Cast Iron Fan Cover / Conduit Box

Fits standard Blue Chip® motors to achieve all cast iron construction.

Components include fan guard and threaded conduit box.

CAT. NO.	FRAME	KIT NO.	LIST PRICE	WHERE USED
A715	143T-145T	KIT 140CB	\$98	Models containing TTTN
A718	182T-184T	KIT 180R	\$141	Models containing TTTS, TTFS, TTFC, THTS
A721	213T-215T	KIT 210R	\$205	Models containing TTFS, TTTS, THTS, TTFC
A723	254T-256T	KIT 250RFPA	\$249	Models containing TTFPA or THFPA
A724	254T-256T	KIT 250RFNA	\$249	Models containing TTFNA, THTNA or THFNA
A725	254T-256T	KIT 250R	\$249	Models containing TTFC
A726	284T-286T	KIT 280RFPA	\$346	Models containing TTFPA, TSTFPA or TSHFPA
A727	284T-286T	KIT 280RFN	\$346	Models containing TTFN or TSTFN
A728	284T-286T	KIT 280R	\$346	Models containing TTFC or TTFP
A731	284T-286T	KIT 280RFNA	\$346	Models containing TTFNA, TSTFNA, THFNA or TSHFNA
A732	324T-326T	KIT 320R	\$367	Models containing TTFC, TTFP, TSTFP, THFP, THFS, TSHFP or TSHFS, TSTFS
A733	324T-326T	KIT 320RFPA	\$367	Models containing TTFPA, TSTFPA, THFPA or TSHFPA

Ball Bearing Conversion Kits

For conversion of Roller Bearing on Drive End to Ball Bearing (for Direct-coupled applications).

CONFIRM KIT SELECTION WITH CUSTOMER SERVICE/ENGINEERING

CAT. NO.	FRAME	BEARING SIZE	ENCLOSURE	WHERE MODEL NO. CONTAINS	KIT NO.	LIST PRICE
A760	444T-445T	318	TEFC	TTFN	KIT 440BBFN	\$1,366
A761	447/9T	319	TEFC	TTFS	KIT 449BBFS	\$1,421
A788	L447/9T	319	TEFC	TTFS	KIT 449BBFS-319	\$1,421
A787	447/9T	322	TEFC	TTFS	KIT 449BBFS-322	\$1,421
A795	L447/9T	322	TEFC	TTFS	KIT L449BBFS-322	\$1,421

Roller Bearing Conversion Kits

For conversion of Ball Bearing on Drive End to Roller Bearing (for Belted Applications).

CONFIRM KIT SELECTION WITH CUSTOMER SERVICE/ENGINEERING

CAT. NO.	FRAME	ENCLOSURE	WHERE MODEL NO. CONTAINS	KIT NO.	LIST PRICE
A755	364T-365T	TEFC	TTFS	KIT 360BRFSR-314	\$1,039
A756	404T-405T	TEFC	TTFS	KIT 400BRFS-316	\$1,039
A757	444T-445T	TEFC	TTFS	KIT 440BRFS - 318	\$1,366
A759	444T-445T	TEFC	TTFN	KIT 440BRFN	\$1,366
A758	447/9T	TEFC	TTFS	KIT 449BRFS	\$1,421

Axial Blower Kits

For installation on Blue Chip XRI® Totally Enclosed and Severe Duty (excluding Explosion Proof).

CAT. NO.	FRAME	KIT NO.	LIST PRICE	WHERE USED
A692	213T-215T	KIT 21TEBC	\$1,434	Models containing TTFS
A691	254T-256T	KIT 25TEBCNA	\$1,567	Models containing TTFNA (Also fits 284/286T/TS TTFPA)
A701	284T/TS-286T/TS	KIT 28TEBCNA	\$1,845	Models containing TTFNA
A695	324T/TS-326T/TS	KIT 32TEBC	\$2,170	Models containing TTFS
A696	364T/TS-365T/TS	KIT 36TEBC	\$2,779	Models containing TTFS
A697	404T/TS-405T/TS	KIT 40TEBC	\$3,269	Models containing TTFS
A698	444TS-449TS	KIT 44TEBC-313	\$3,465	Models with 6313 bearing on opposite shaft end.
A699	444T-449T	KIT 44TEBC-316	\$3,465	Models with 6316 bearing on opposite shaft end. (excludes roller bearing)
A700	444T-449T	KIT 44TEBC-318	\$3,465	Models with 6318 bearing on opposite shaft end. (excludes roller bearing)
A796	L449T	KIT L449TEBC	\$3,465	Use on "Stretch" 447/9T frame (L447/9 or TS)

Accessory Kits - Multiplier Symbol E3

Encoder Kits and Accessories for Black Max, Blue Max, XRI-SD and XRI-841 motors

Installation of encoder kits on Blue Chip XRI-SD and XRI-841 TEFC motors requires installation of A807 Stub Shaft Kit (see below)

ENCL.	NEMA FRAME	BRAND / MODEL	PPR	CAT. NO.	KIT NO.	LIST PRICE	NOTES		
TENV (5/8" bore)	56-256	Avtron HS25A	1024	A746 *	KIT HS25A1024-NV	\$950	Shaft Mount, 5-26 VDC, with 10 pin connector/mate		
			2048	A747	KIT HS25A2048-NV	\$950	Shaft Mount, 5-26 VDC, with 10 pin connector/mate		
		Avtron HS35A	1024	A736 *	KIT HS35A1024-NV	\$1,291	Shaft Mount, 5-26 VDC, with 10 pin connector/mate		
			2048	A739 *	KIT HS35A2048-NV	\$1,291	Shaft Mount, 5-26 VDC, with 10 pin connector/mate		
		Avtron HS35M	1024	A742 *	KIT HS35M1024	\$1,495	Shaft Mount, 5-24 VDC, with EPIC connector/mate		
			2048	A744	KIT HS35M2048	\$1,495	Shaft Mount, 5-24 VDC, with EPIC connector/mate		
		Avtron M3	1024	A753 *	KIT M31024-NV	\$2,500	Shaft Mount, 5-24 VDC, with EPIC connector/mate		
		Avtron M56	1024	A793 *	KIT M561024-NV	\$2,038	Modular Mount, 5-24 VDC, with EPIC connector/mate, Double C-Face		
		NorthStar SL56	512	A785 *	KIT LKSR512	\$2,038	Modular Mount, 5-15 VDC, with EPIC connector/mate		
			1024	A763 *	KIT LKSR02	\$2,038	Modular Mount, 5-15 VDC, with EPIC connector/mate		
			1024	A786 *	KIT LKSR-CFACE	\$2,241	Modular Mount, 5-15 VDC, with EPIC connector/mate, Double C-Face		
			2048	A797	KIT LKSR2048	\$2,038	Modular Mount, 5-15 VDC, with EPIC connector/mate		
		NorthStar HSD35	1024	A711 *	KIT HSD351024-NV	\$1,395	Shaft Mount, 5-26 VDC, with EPIC connector/mate		
		Dynapar HS20	1024	A687 *	KIT HS201024-NV	\$600	Shaft Mount, 5-26 VDC, with 10 pin connector/mate		
		Dynapar HS35	1024	A772 *	KIT HS351024-NV	\$1,291	Shaft Mount, 5-26 VDC, with 10 pin connector/mate		
			2048	A776 *	KIT HS352048-NV	\$1,291	Shaft Mount, 5-26 VDC, with 10 pin connector/mate		
		BEI HS35	1024	A779 *	KIT HS35B1024-NV	\$1,291	Shaft Mount, 5-28 VDC, with 10 pin connector/mate		
			2048	A780 *	KIT HS35B2048-NV	\$1,291	Shaft Mount, 5-28 VDC, with 10 pin connector/mate		
		TEFC (1" bore)	182-449	-----	----	A807 *	KIT STUBSHAFT 1IN	\$150	Required on XRI-SD and XRI-841 TEFC motors to add encoder kits
				Avtron HS35A	1024	A737 *	KIT HS35A1024-FC	\$1,291	Shaft Mount, 5-26 VDC, with 10 pin connector/mate
	2048			A740	KIT HS35A2048-FC	\$1,291	Shaft Mount, 5-26 VDC, with 10 pin connector/mate		
Avtron HS35M	1024			A742 *	KIT HS35M1024	\$1,495	Shaft Mount, 5-24 VDC, with 10 pin connector/mate		
	2048			A744	KIT HS35M2048	\$1,495	Shaft Mount, 5-24 VDC, with 10 pin connector/mate		
Avtron M3	1024			A754 *	KIT M31024-FC	\$2,500	Shaft Mount, 5-24VDC, with EPIC connector/mate		
NorthStar HSD35	1024			A712 *	KIT HSD351024-FC	\$1,395	Shaft Mount, 5-26 VDC, with EPIC connector/mate		
Dynapar HS35	1024			A774 *	KIT HS351024-FC	\$1,291	Shaft Mount, 5-26 VDC, with 10 pin connector/mate		
	2048			A777 *	KIT HS352048-FC	\$1,291	Shaft Mount, 5-26 VDC, with 10 pin connector/mate		
BEI HS35	1024			A783 *	KIT HS35B1024-FC	\$1,291	Shaft Mount, 5-28 VDC, with 10 pin connector/mate		
	2048	A784	KIT HS35B2048-FC	\$1,291	Shaft Mount, 5-28 VDC, with 10 pin connector/mate				
TEBC (1" bore)	284-449	Avtron HS35A	1024	A738 *	KIT HS35A1024-BC	\$1,291	Shaft Mount, 5-26 VDC, with 10 pin connector/mate		
			2048	A741	KIT HS35A2048-BC	\$1,291	Shaft Mount, 5-26 VDC, with 10 pin connector/mate		
		Avtron HS35M	1024	A743	KIT HS35M1024-BC	\$1,495	Shaft Mount, 5-24 VDC, with 10 pin connector/mate		
			2048	A745	KIT HS35M2048-BC	\$1,495	Shaft Mount, 5-24 VDC, with 10 pin connector/mate		
		Avtron M56	1024	A794 *	KIT M561024-BC	\$2,038	Modular Mount, 5-24 VDC		
		NorthStar SL56	1024	A764 *	KIT LKSR03	\$2,038	Modular Mount, 5-15 VDC		
		Dynapar HS35	1024	A775 *	KIT HS351024-BC	\$1,291	Shaft Mount, 5-26 VDC, with 10 pin connector/mate		
			2048	A778 *	KIT HS352048-BC	\$1,291	Shaft Mount, 5-26 VDC, with 10 pin connector/mate		
		Turck A02H	1024	A668 *	KIT A02H1024-BC LED	\$1,450	Shaft Mount, 5-30VDC, bulkhead (A801 not required), LED cordset (3m)		
			2048	A669 *	KIT A02H2048-BC LED	\$1,450	Shaft Mount, 5-30VDC, bulkhead (A801 not required), LED cordset (3m)		
		BEI HS35	1024	A781 *	KIT HS35B1024-BC	\$1,291	Shaft Mount, 5-28 VDC, with 10 pin connector/mate		
			2048	A782	KIT HS35B2048-BC	\$1,291	Shaft Mount, 5-28 VDC, with 10 pin connector/mate		
	-----	----	A801 *	KIT ENCB0X	\$136	Encoder Conduit Box (required for all TEBC encoders except Turck A02H)			
TENV BRAKE- MOTORS	143-256	Avtron M56	1024	A748 *	KIT M561024BRK-140	\$2,038	Fits Blue Max Brakemotors (Y986, Y987)		
			1024	A749 *	KIT M561024BRK-182	\$2,038	Fits Blue Max Brakemotors (Y988)		
		Avtron M85	1024	A750 *	KIT M851024BRK-184	\$2,750	Fits Blue Max Brakemotors (Y989)		
			1024	A751 *	KIT M851024BRK-210	\$2,750	Fits Blue Max Brakemotors (Y990, Y991)		
			1024	A752 *	KIT M851024BRK-250	\$2,750	Fits Blue Max Brakemotors (Y992, Y993)		
		NorthStar SL56	1024	A786 *	KIT LKSR-CFACE	\$2,241	Fits Blue Max Brakemotors (Y986, Y987)		
			1024	A789 *	KIT SL561024-182NV	\$2,241	Fits Blue Max Brakemotors (Y988)		
		NorthStar SL85	1024	A790 *	KIT SL851024-184NV	\$2,750	Fits Blue Max Brakemotors (Y989)		
			1024	A791 *	KIT SL851024-210NV	\$2,750	Fits Blue Max Brakemotors (Y990, Y991)		
			1024	A792 *	KIT SL851024-250NV	\$2,750	Fits Blue Max Brakemotors (Y992, Y993)		
CABLE KITS	56-449	Danaher Controls	N/A	A688-10 *	KIT A688-10	\$249	10 foot cable and pre-wired, 10-pin mating connector for HS35 encoders		
			N/A	A688-50 *	KIT A688-50	\$647	50 foot cable and pre-wired, 10-pin mating connector for HS35 encoders		
			N/A	A690-15 *	KIT A690-15	\$206	15 feet bulk cable, for use with NorthStar SL56/SL85 encoders		
STUB SHAFTS	182-449 100-225	-----	N/A	A807 *	KIT STUBSHAFT 1IN	\$150	1" stub shaft kit, for installation on XRI-SD & XRI-841 TEFC motors		
		-----	N/A	A809	KIT STUBSHAFT 16MM	\$150	16mm stub shaft kit, for (future) installation on Globetrotter IEC TEFC motors		

* Stock Model

Encoder Stub Shaft Kit

CAT. NO.	KIT NO.	LIST PRICE	MULT SYMBOL	WHERE USED
A807	KIT STUBSHAFT 1IN	\$150	E3	Fits XRI Severe Duty or XRI IEEE-841 motors to allow addition of 1" bore hollow shaft encoders. (182-449 TEFC)

Accessory Kits - Multiplier Symbol S4

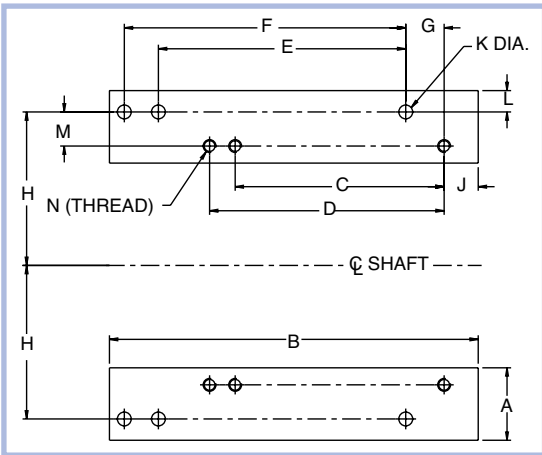
Shaft Ground Brush

Shaft grounding brushes are recommended (NEMA MG1 31.4.4.3) as an effective means of bearing protection for motors operated from inverter power. One brush is adequate to bleed down inverter-sourced shaft voltages, thereby protecting both bearings for motors as large as 5011 frame. Kit includes ground brush, brush holder, shoulder bolt, and instructions. May not be installed on motors used in Division I or Division 2 hazardous locations. Shaft grounding brushes do not fit all motor types. Contact factory.

CAT. NO.	KIT NO.	LIST PRICE	MULT. SYMB.	COMMENTS
A103	KIT 103	\$312	S4	Drive end mount
A116	KIT 116	\$450	S4	Non-drive end mount

Replacement Brush for A103 & A116

CAT. NO.	KIT NO.	LIST PRICE	MULT. SYMB.
A109	KIT 109	\$49	S4



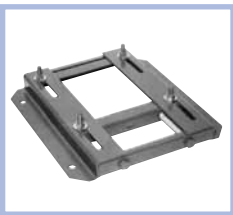
Application: Convert "T" frame ratings to "U" frame based dimensions and shaft heights. Shaft dimensions may vary from actual "U" frame specifications.

Transition Bases

CAT. NO.	KIT #	CONVERTS FROM	CONVERTS TO	A	B	HGT	C	D	E	F	G	H	J	K	L	M	N (THREAD)	APP. WGHT.	LIST PRICE
1814T	KIT 180U	143T/145T	182/184	2 1/4	7 1/2	1	4	5	4 1/2	5 1/2	1/2	3 3/4	1	7/16	1/2	1	5/16-18	2	\$131
2118T	KIT 210U	182T/184T	213/215	1 3/4	9 1/2	3/4	4 1/2	5 1/2	5 1/2	7	1	4 1/4	1	7/16	7/16	1/2	3/8-16	3	\$166
25U21T	KIT 250U	213T/215T	254U/256U	2 7/16	12 3/4	1	5 1/2	7	8 1/4	10	1 1/8	5	1	9/16	5/8	3/4	3/8-16	5	\$166
28U25T	KIT 280U	254T/256T	284U/286U	2 3/4	14 1/4	3/4	8 1/4	10	9 1/2	11	1 3/8	5 1/2	1 1/4	9/16	15/16	1/2	1/2-13	8	\$166
32U28T	KIT 320U	284T/286T	324U/326U	3 1/4	15 3/4	1	9 1/2	11	10 1/2	12	1 1/2	6 1/4	1 1/2	11/16	15/16	3/4	1/2-13	10	\$196
36U32T	KIT 360U	324T/326T	364U/365U	3 11/16	16 1/2	1	10 1/2	12	11 1/4	12 1/4	1 3/4	7	1 3/4	11/16	1 3/16	3/4	5/8-11	13	\$232
40U36T	KIT 400U	364T/365T	404U/405U	4 1/4	18 5/8	1	11 1/4	12 1/4	12 1/4	13 3/4	2	8	2	13/16	1 1/4	1	5/8-11	22	\$297
44U40T	KIT 440U	404T/405T	444U/445U	4 1/4	21 5/8	1	12 1/4	13 3/4	14 1/2	16 1/2	2 1/4	9	2	13/16	1 1/4	1	3/4-10	24	\$297

ACCESSORY KITS

Adjustable Motor Bases (Slide Bases)



Application: Used to adjust tension during motor installation. Made with heavy duty steel construction with single screw adjustment for 143T-215T Frame and double screw adjustment for 254T Frame and larger.

FRAME	CAT. NO.	KIT NO.	LIST PRICE	WGHT. LBS.
143	143A	KIT 143SB	\$80	5
145	145A	KIT 145SB	\$80	6
182	182A	KIT 182SB	\$89	9
184	184A	KIT 184SB	\$89	10
213	213A	KIT 213SB	\$107	14
215	215A	KIT 215SB	\$107	16
254	254B2	KIT 254SB	\$172	18
256	256B2	KIT 256SB	\$172	19
284	284B2	KIT 284SB	\$204	21
286	286B2	KIT 286SB	\$204	22

FRAME	CAT. NO.	KIT NO.	LIST PRICE	WGHT. LBS.
324	324B2	KIT 324SB	\$269	31
326	326B2	KIT 326SB	\$269	32
364	364B2	KIT 364SB	\$352	44
365	365B2	KIT 365SB	\$352	45
404	404B2	KIT 404SB	\$514	60
405	405B2	KIT 405SB	\$514	61
444	444B2	KIT 444SB	\$710	67
445	445B2	KIT 445SB	\$710	69
447	447B2	KIT 447SB	\$1,064	92
449	449B2	KIT 449SB	\$1,064	95