

PRODUCT INFORMATION PACKET

Model No: 056B17D15549

Catalog No: E280A

1 HP General Purpose Motor, 1 phase, 1800 RPM, 120/240 V, 56 Frame, ODP
Single Phase ODP Motors



Regal and Marathon are trademarks of Regal Beloit Corporation or one of its affiliated companies.
©2020 Regal Beloit Corporation, All Rights Reserved. MC017097E

REGAL

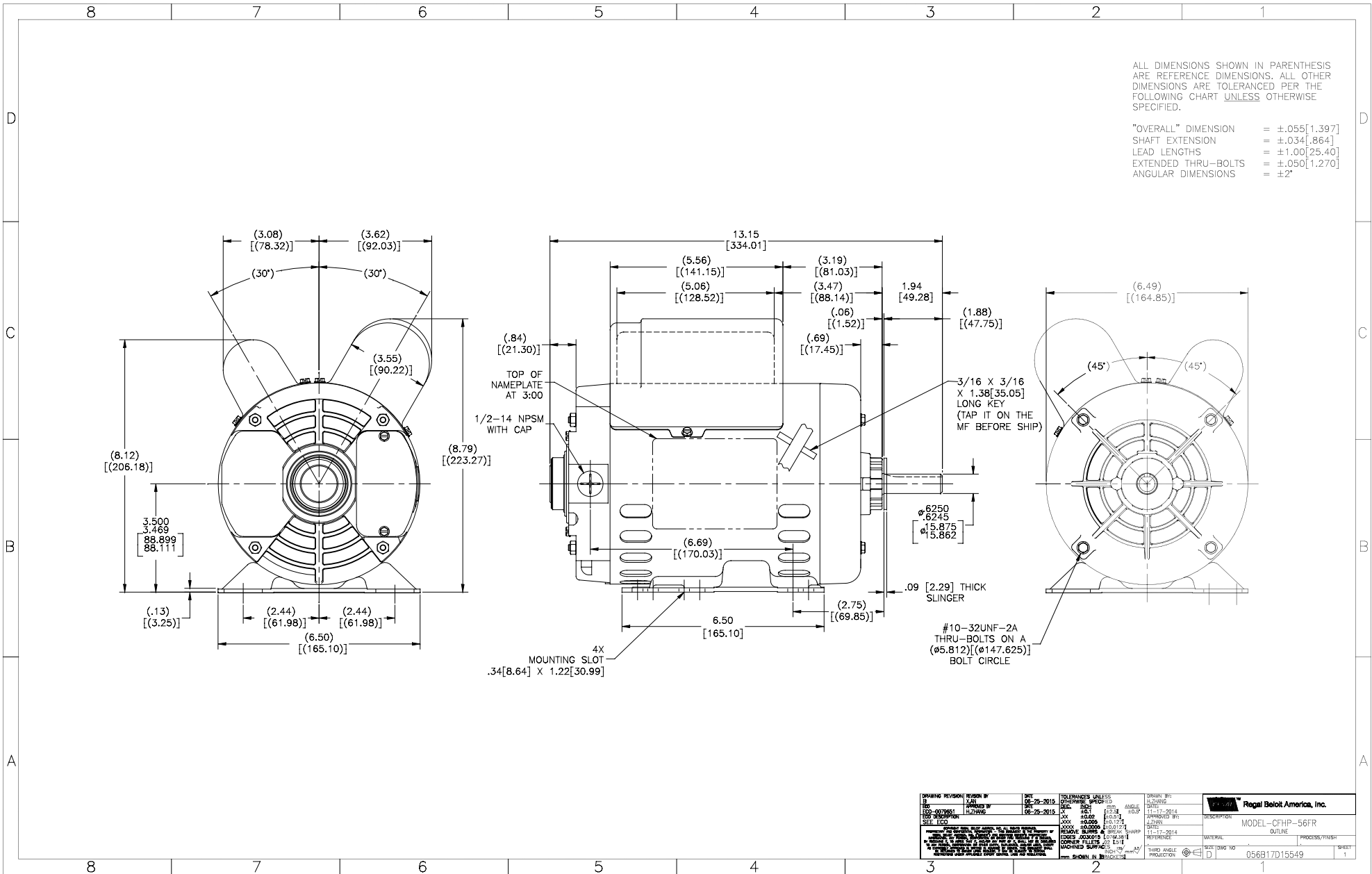
Nameplate Specifications

Output HP	1 Hp	Output KW	0.75 kW
Frequency	60 Hz	Voltage	120/240 V
Current	8.2/4.1 A	Speed	1725 rpm
Service Factor	1.15	Phase	1
Efficiency	82.6 %	Power Factor	97.8
Duty	Continuous	Insulation Class	B
Design Code	NO DESIGN CODE	KVA Code	K
Frame	56	Enclosure	Drip Proof
Thermal Protection	Manual	Ambient Temperature	40 °C
Drive End Bearing Size	6203	Opp Drive End Bearing Size	6203
UL	Recognized	CSA	Y
CE	Y	IP Code	22

Technical Specifications

Electrical Type	Capacitor Start Capacitor Run	Starting Method	Across The Line
Poles	4	Rotation	Selective Counterclockwise
Resistance Main	1.9 Ohms	Mounting	Rigid Base
Motor Orientation	Horizontal	Drive End Bearing	Ball
Opp Drive End Bearing	Ball	Frame Material	Rolled Steel
Shaft Type	T	Overall Length	13.12 in
Frame Length	8.25 in	Shaft Diameter	0.625 in
Shaft Extension	1.88 in	Assembly/Box Mounting	F1 OUT ODE BRKT RADIAL
Connection Drawing	D0000435-001	Outline Drawing	056B17D15549-S01

This is an uncontrolled document once printed or downloaded and is subject to change without notice. Date Created:14/12/2020



DRAWING REVISION		REVISION BY	DATE	TOLERANCES UNLESS OTHERWISE SPECIFIED			DRAWN BY		Regal Beloit America, Inc.	
1		JAN	06-25-2015	DEC	±.005	±.010	±.015	11-17-2014	DESCRIPTION	MODEL-CFHP-56FR
2		HLTWANG	06-25-2015	ANG	±.005	±.010	±.015	APPROVED BY	OUTLINE	PROCESS/FINISH
3				XXX	±.005	±.010	±.015			
4				XXX	±.005	±.010	±.015			
5				XXX	±.005	±.010	±.015			
6				XXX	±.005	±.010	±.015			
7				XXX	±.005	±.010	±.015			
8				XXX	±.005	±.010	±.015			
9				XXX	±.005	±.010	±.015			
10				XXX	±.005	±.010	±.015			
11				XXX	±.005	±.010	±.015			
12				XXX	±.005	±.010	±.015			
13				XXX	±.005	±.010	±.015			
14				XXX	±.005	±.010	±.015			
15				XXX	±.005	±.010	±.015			
16				XXX	±.005	±.010	±.015			
17				XXX	±.005	±.010	±.015			
18				XXX	±.005	±.010	±.015			
19				XXX	±.005	±.010	±.015			
20				XXX	±.005	±.010	±.015			
21				XXX	±.005	±.010	±.015			
22				XXX	±.005	±.010	±.015			
23				XXX	±.005	±.010	±.015			
24				XXX	±.005	±.010	±.015			
25				XXX	±.005	±.010	±.015			
26				XXX	±.005	±.010	±.015			
27				XXX	±.005	±.010	±.015			
28				XXX	±.005	±.010	±.015			
29				XXX	±.005	±.010	±.015			
30				XXX	±.005	±.010	±.015			
31				XXX	±.005	±.010	±.015			
32				XXX	±.005	±.010	±.015			
33				XXX	±.005	±.010	±.015			
34				XXX	±.005	±.010	±.015			
35				XXX	±.005	±.010	±.015			
36				XXX	±.005	±.010	±.015			
37				XXX	±.005	±.010	±.015			
38				XXX	±.005	±.010	±.015			
39				XXX	±.005	±.010	±.015			
40				XXX	±.005	±.010	±.015			
41				XXX	±.005	±.010	±.015			
42				XXX	±.005	±.010	±.015			
43				XXX	±.005	±.010	±.015			
44				XXX	±.005	±.010	±.015			
45				XXX	±.005	±.010	±.015			
46				XXX	±.005	±.010	±.015			
47				XXX	±.005	±.010	±.015			
48				XXX	±.005	±.010	±.015			
49				XXX	±.005	±.010	±.015			
50				XXX	±.005	±.010	±.015			

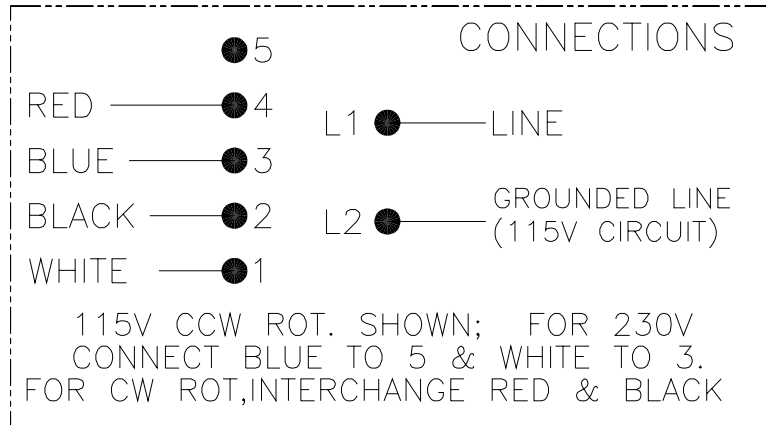
4

3

2

1

REV	ECO	REV BY	DATE	APPD	DATE
A	ECO-0028953	A.BAUGHMAN	11-09-2012	A.BAUGHMAN	11-09-2012



GEOMETRIC CHARACTERISTICS & SYMBOLS

- ▭ FLATNESS
- STRAIGHTNESS
- ∠ ANGULARITY
- ⊥ PERPENDICULARITY (SQUARENESS)
- // PARALLELISM
- ROUNDNESS (CIRCULARITY)
- ⊘ CYLINDRICITY
- △ PROFILE OF ANY SURFACE
- ∩ PROFILE OF ANY LINE
- ⊕ RUNOUT
- ⊕ TRUE POSITION
- ◎ CONCENTRICITY
- ≡ SYMMETRY

ASME Y14.5M 1994

**UNLESS OTHERWISE SPECIFIED
DIM. TOLERANCES ARE AS FOLLOWS:**

INCH	±.1	±.02	±.005	±.0005
mm	±0.5	±0.13	±0.013	

ANG. ±.50 DEG
REMOVE BURRS & BREAK SHARP EDGES:
INCH .003-015 mm 0.1-0.4

CORNER FILLETS TO:
INCH .020 mm 0.5
MACHINE SURFACES:
INCH 125 mm 3.2

METRIC DIMS. SHOWN IN [BRACKETS]

DR BY:	A.BAUGHMAN	11-09-2012
APPD:	A.BAUGHMAN	11-09-2012
THIRD ANGLE PROJECTION		EDS DATE 11-11-2011 FORMAT REV H
<p>CONFIDENTIAL: THIS DRAWING AND ITS INFORMATION ARE THE EXCLUSIVE AND CONFIDENTIAL PROPERTY OF REGAL-BELOIT CORPORATION AND ARE NOT TO BE DISCLOSED, DUPLICATED, DISTRIBUTED OR OTHERWISE USED WITHOUT THE WRITTEN CONSENT OF REGAL-BELOIT CORPORATION. -ALL RIGHTS RESERVED.</p>		

REGAL REGAL-BELOIT CORPORATION	
DESCRIPTION CONN DIAGRAM-NAMEPLATE	
SIZE C	DWG NO D0000435-001
SCALE NONE	SHEET 1

4

3

2

1

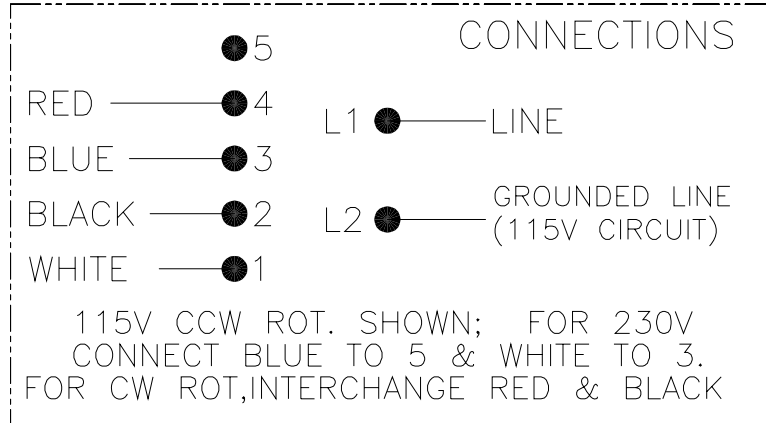
4

3

2

1

REVISION:	ECO	REVISADO POR:	FECHA:	APROBADO POR:	FECHA:
A	ECO-0028953	A.BAUGHMAN	11-09-2012	A.BAUGHMAN	11-09-2012



CARACTERISTICAS DE GEOMETRIA Y SIMBOLOS ▽ PLANICIDAD — RECTITUD ∠ ANGULARIDAD ⊥ PERPENDICULARIDAD (A ESQUADRA) // PARALELISMO ○ REDONDEZ (CIRCULARIDAD) ⌀ CILINDRICIDAD ⊖ PERFIL DE CUALQUIER SUPERFICIE ∩ PERFIL DE CUALQUIER LINEA ≠ VARIACION ⊕ POSICION REAL ⊙ CONCENTRICIDAD ≡ SIMETRIA	A MENOS QUE SE ESPECIFIQUE DE OTRA MANERA, LAS TOLERANCIAS DE LAS DIMS. SON LAS SIGUIENTES: PULG X XX XXX XXXX mm ±.1 ±.02 ±.005 ±.0005 mm ±0.5 ±0.13 ±0.013 ANG. ±50 GRADOS ELIMINAR REBABAS Y ORILLAS FILOSAS DEL BORDE. PULG .003-.015 mm 0.1-0.4 FILETEAR ESQUINA: PULG .020 mm 0.5 MAQUINAR SUPERFICIES PULG 125 mm 3.2 DIMS METRICAS MOSTRADAS [PARENTESIS]	DIBUJADO POR: A.BAUGHMAN 11-09-2012	REGAL-BELOIT CORPORATION
		APROBADO POR: A.BAUGHMAN 11-09-2012	
		TERCER ANGULO DE PROYECCION	FECHA EDS: 11-11-2011 REV. FORMATO: H
		CONFIDENCIAL: ESTE DIBUJO Y SU INFORMACION SON PROPIEDAD DE USO EXCLUSIVO Y CONFIDENCIAL DE REGAL-BELOIT CORPORATION. Y NO DEBERAN SER REVELADOS, DUPLICADOS, DISTRIBUIDOS O USARSE DE OTRA MANERA SIN EL CONSENTIMIENTO ESCRITO DE REGAL-BELOIT CORPORATION. -TODOS LOS DERECHOS RESERVADOS.	
		TAMAÑO: C	NUMERO DE DIBUJO: D0000435-001
		ESCALA: NONE	HOJA: 1

4

3

2

1

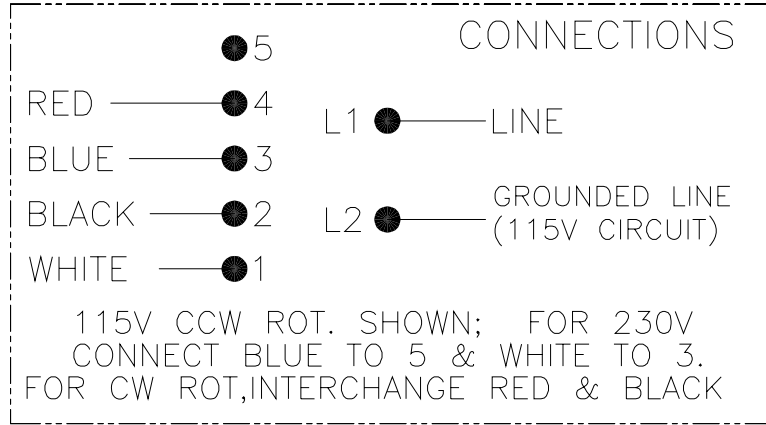
4

3

2

1

版本	ECO	编制	日期	批准	日期
A	ECO-0028953	A.BAUGHMAN	11-09-2012	A.BAUGHMAN	11-09-2012



形位公差 □ 平面度 ⊥ 垂直度 ∠ 倾斜度 ⊥ 垂直度 // 平行度 ○ 圆度 ⊙ 圆柱度 ⌒ 圆弧半径度 ⌒ 轮廓圆度 ⊕ 圆跳动 ⊕ 位置度 ⊕ 对称度	除另有注明 尺寸公差如下: 英寸 X XX XXX XXXX 毫米 ±.1 ±.02 ±.005 ±.0005 英寸 ±.1 ±.02 ±.005 ±.0005 毫米 ±0.5 ±0.13 ±0.013 角度 ±.50 度 清理毛刺和尖棱 英寸 .003-.015 毫米 0.1-0.4 内圆角 英寸 .020 毫米 0.5 表面粗糙度 英寸 125 毫米 3.2 米制尺寸显示在L
---	--

ASME Y14.5M 1994

绘图:	A.BAUGHMAN	11-09-2012
批准:	A.BAUGHMAN	11-09-2012
第三角投影		图版格式发布日期 11-11-2011 图版格式版本 H
机密: 本图纸及相关信息所有权归REGAL-BELOIT CORPORATION. 未经REGAL-BELOIT CORPORATION书面授权, 不得泄露、 复制、传播或作其他用途。--版权所有		

REGAL REGAL-BELOIT CORPORATION

名称	CONN DIAGRAM-NAMEPLATE	
图号	C	D0000435-001
比例	NONE	页号 1

4

3

2

1

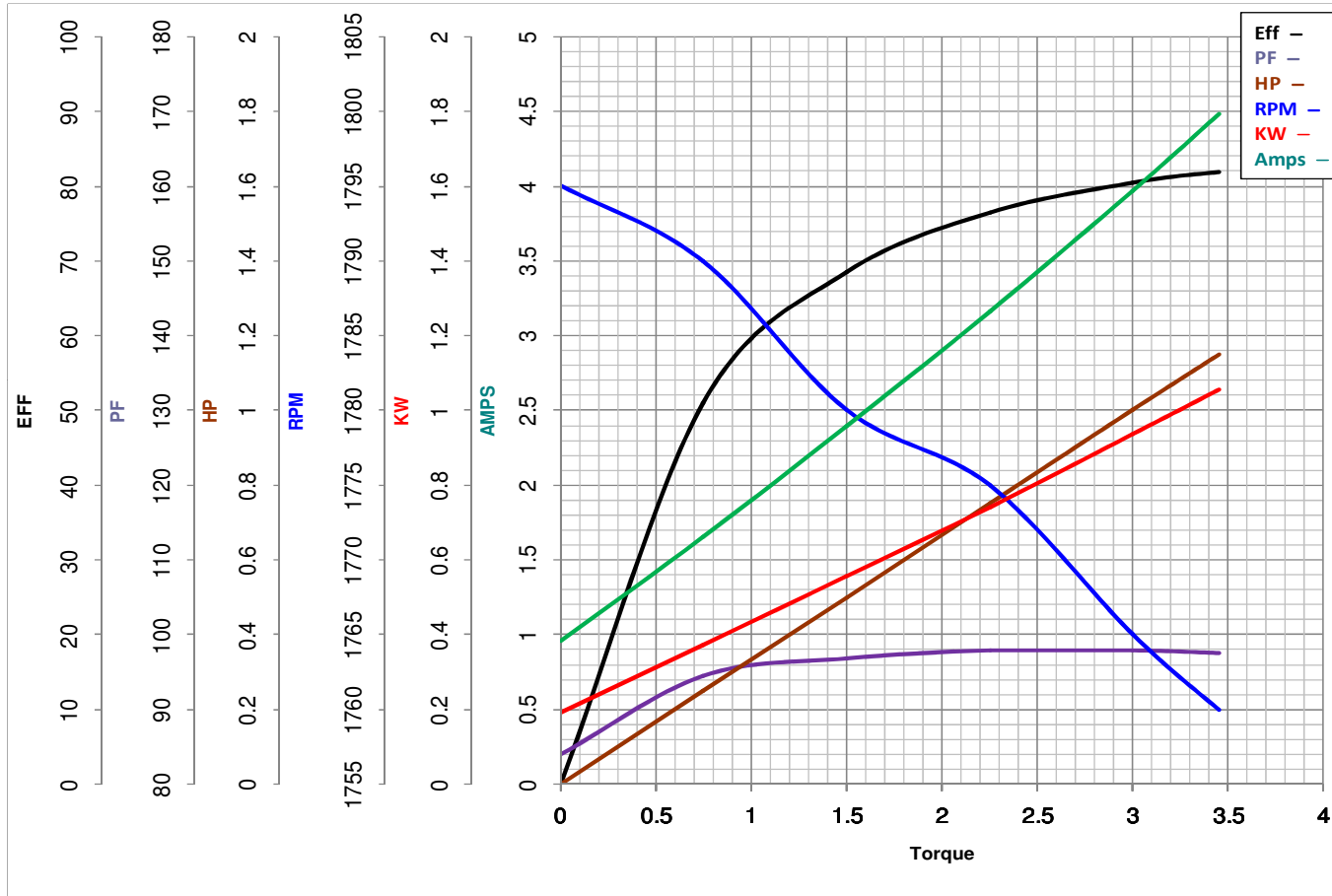
FORM 3531 REV.3 02/07/99

** Subject to change without notice.



MARATHON ELECTRIC CORPORATION
TYPICAL PERFORMANCE CURVE for AC MOTOR

Customer _____ Curve at 240 Volts HP 1&1 PHASE 1
60 HZ
 Model No 56B17D15549 1 HP VOLTS 120/240&120/240
 Catalog No E280A HZ 60&50 RPM 1725&1425



		Torque in Lb.Ft	
FL TORQUE	<u>3</u> Lb.Ft	FL AMPS	<u>8.2/4.1</u>
BD TORQUE	<u>9.9</u> Lb.Ft	PU TORQUE	<u>8.6</u> Lb.Ft
LR TORQUE	<u>9.516</u> Lb.Ft	LR AMPS	<u>33.32</u>
WINDING	SS0053728-3	Date	2/5/2019