

# PRODUCT INFORMATION PACKET

Model No: 056B17D5322  
Catalog No: K232  
2,1725,DP,56HC,1/60/115/208-230  
Pressure Washers



Regal and Marathon are trademarks of Regal Beloit Corporation or one of its affiliated companies.

©2018 Regal Beloit Corporation, All Rights Reserved. MC017097E

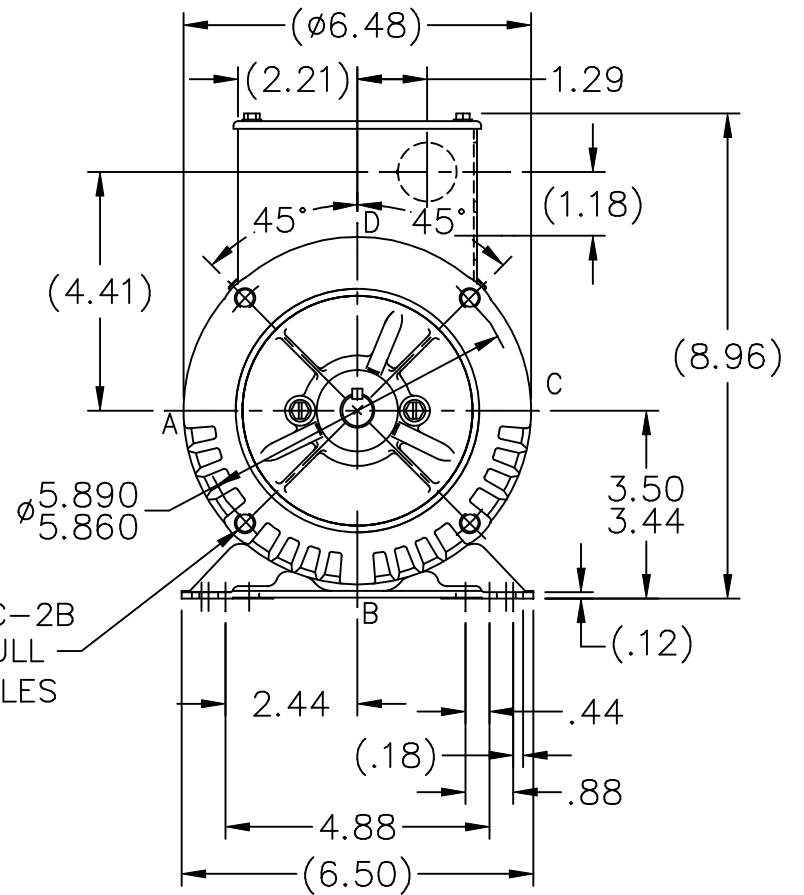
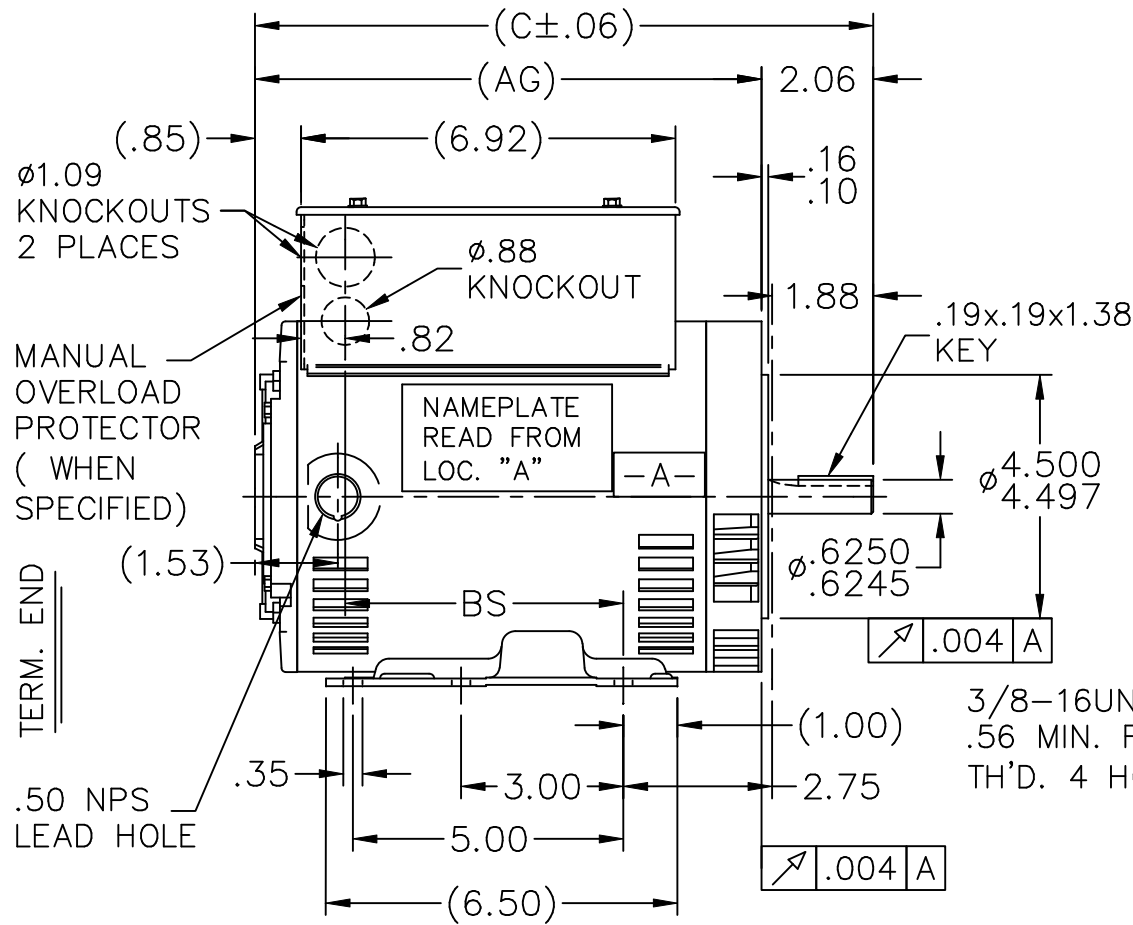
**Nameplate Specifications**

Output HP	<b>2 Hp</b>	Output KW	<b>1.5 kW</b>
Frequency	<b>60 Hz</b>	Voltage	<b>115/208-230 V</b>
Current	<b>18.8/10.2-9.4 A</b>	Speed	<b>1725 rpm</b>
Service Factor	<b>1.15</b>	Phase	<b>1</b>
Efficiency	<b>81.5 %</b>	Duty	<b>Continuous</b>
Insulation Class	<b>B</b>	Design Code	<b>NO DESIGN CODE</b>
KVA Code	<b>J</b>	Frame	<b>56HC</b>
Enclosure	<b>Drip Proof</b>	Overload Protector	<b>Manual</b>
Ambient Temperature	<b>40 °C</b>	Drive End Bearing Size	<b>6205</b>
Opp Drive End Bearing Size	<b>6205</b>	UL	<b>Recognized ( Not Protector)</b>
CSA	<b>Y</b>	CE	<b>N</b>
IP Code	<b>22</b>		

**Technical Specifications**

Electrical Type	<b>Capacitor Start Capacitor Run</b>	Starting Method	<b>Across The Line</b>
Poles	<b>4</b>	Rotation	<b>Selective Counterclockwise</b>
Mounting	<b>Rigid Base</b>	Motor Orientation	<b>Horizontal</b>
Drive End Bearing	<b>Ball</b>	Opp Drive End Bearing	<b>Ball</b>
Frame Material	<b>Rolled Steel</b>	Shaft Type	<b>T</b>
Overall Length	<b>13.43 in</b>	Shaft Diameter	<b>0.625 in</b>
Shaft Extension	<b>1.88 in</b>	Assembly/Box Mounting	<b>F1 Only</b>
Outline Drawing	<b>A-100214-956</b>	Connection Diagram	<b>102006-2</b>

**This is an uncontrolled document once printed or downloaded and is subject to change without notice. Date Created: 10/08/2018**



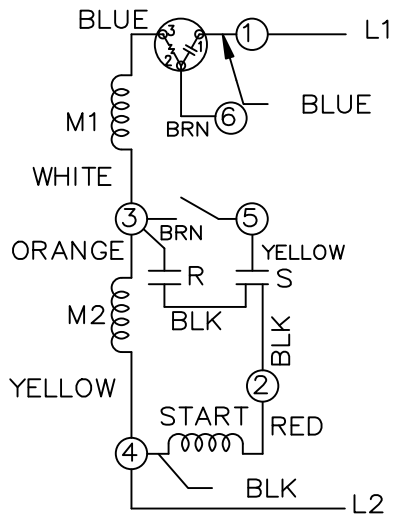
DASH	FR.	C	AG	BS	DASH	FR.	C	AG	BS
756	56	11.43	9.37	5.14	956	56	13.43	11.37	7.14
806	56	11.93	9.87	5.64					

NO.	REVISION	BY & DATE	CHK	TOLERANCES UNLESS SPECIFIED	
				DEC.	INCHES
5	REDRAWN IN AUTOCAD	TAT 06-13-2005	ML	.XX	±.03
4	RE-ISSUE MANUAL OVERLOAD WAS MANUAL OVERRIDE	MH 04-28-1998		.XXX	±.005
3	REDRAWN ON CADD - NO CHANGES	MH 03-31-1998		.XXXX	±.0005
				ANG	±7'30"

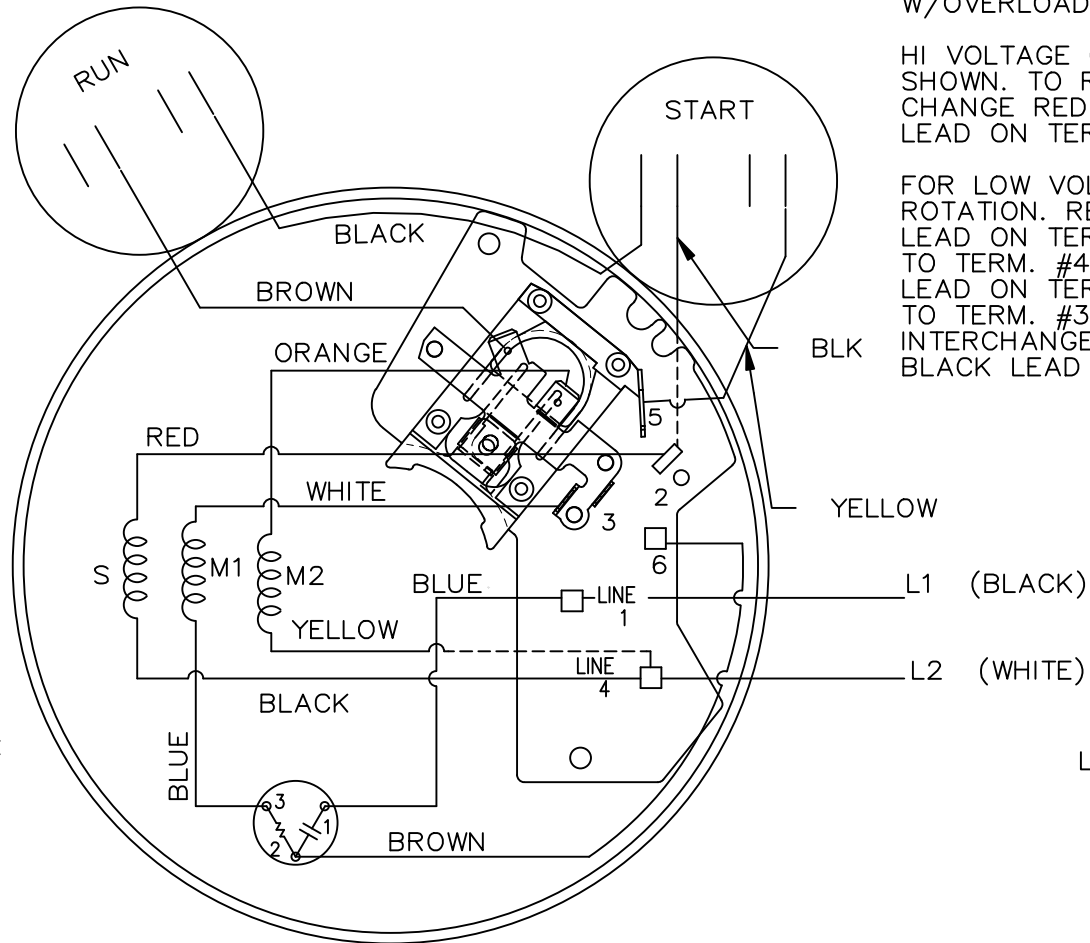
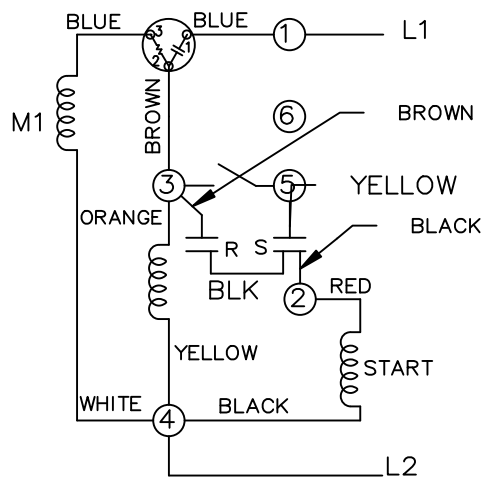
	DRAWN MH 03-24-1998
	CHK ML 03-31-1998
	APPD GK 03-31-1998
	SCALE 9=32
	REF
TITLE OUTLINE	FMF
56 FR. - DR.PR. - 'C' FACE - 1Ø	PREV
MAT'L.	
FINISH	

THIS DRAWING IN DESIGN AND DETAIL IS OUR PROPERTY AND MUST NOT BE USED EXCEPT IN CONNECTION WITH OUR WORK ALL RIGHTS OF DESIGN AND INVENTION ARE RESERVED THIS IS AN ELECTRONICALLY GENERATED DOCUMENT - DO NOT SCALE THIS PRINT	RFP	CAD FILE 100214	SIZE A	DRAWING NO. 100214	PAGE OF	REV. 5
	DIST WP					

HIGH VOLTAGE C.C.W.



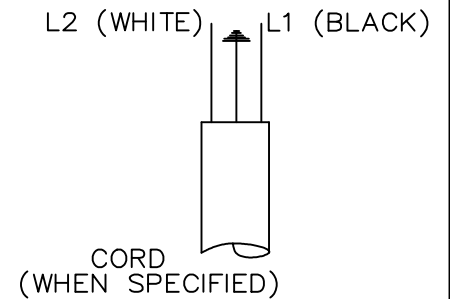
LOW VOLTAGE C.C.W.



DUAL VOLTAGE CAPACITOR  
START, CAPACITOR RUN  
W/OVERLOAD AND SELECT ROTATION

HI VOLTAGE C.C.W. ROTATION  
SHOWN. TO REVERSE INTER-  
CHANGE RED WITH BLACK  
LEAD ON TERMS. 2 & 4.

FOR LOW VOLTAGE C.C.W.  
ROTATION. REMOVE WHITE  
LEAD ON TERM. #3 & ATTACH  
TO TERM. #4. REMOVE BROWN  
LEAD ON TERM. #6 ATTACH  
TO TERM. #3. TO REVERSE  
INTERCHANGE RED WITH  
BLACK LEAD ON TERMS. 2 & 4.



				TOLERANCES UNLESS SPECIFIED		MARATHON ELECTRIC	DRAWN PGK 08-26-1996		
				DEC.	INCHES		CHK	ML 09-05-1996	
				.X	±.1	TITLE CONNECTION DIAGRAM	APPD	GK 09-05-1996	
				.XX	±.02		SCALE	5=8	
7	UPDATED PER IS11-3490	PN	8/31/2011	VC	.XXX ±.005		REF		
6	REDRAWN ON CADD	PGK	09-05-1996		.XXXX ±.0005	MAT'L.	FMF		
NO.	REVISION	BY & DATE		CHK	ANG ±7'30"	FINISH	PREV		
THIS DRAWING IN DESIGN AND DETAIL IS OUR PROPERTY AND MUST NOT BE USED EXCEPT IN CONNECTION WITH OUR WORK ALL RIGHTS OF DESIGN AND INVENTION ARE RESERVED THIS IS AN ELECTRONICALLY GENERATED DOCUMENT - DO NOT SCALE THIS PRINT				RFP	CAD FILE 102006_3		SIZE	DRAWING NO. PAGE OF	REV.
				DIST	WP		A	102006-2	7

**CERTIFICATION DATA SHEET**

**Model#:** 56B17D5322 E **WINDING#:** ZB411 NONE 3  
**CONN. DIAGRAM:** 102006-2 **ASSEMBLY:** F1 ONLY  
**OUTLINE:** A-100214-956

**TYPICAL MOTOR PERFORMANCE DATA**

HP	KW	SYNC. RPM	F.L. RPM	FRAME	ENCLOSURE	KVA CODE	DESIGN
2	1.49	1800	1725	56HC	DP	J	NO DESIGN CODE

PH	Hz	VOLTS	FL AMPS	START TYPE	DUTY	INSL	S.F	AMB°C	ELEVATION
1	60	115/208-230	18.8/10.2-9.4	ACROSS THE LINE	CONTINUOUS	B3	1.15	40	3300

FULL LOAD EFF: -	3/4 LOAD EFF: 79.2	1/2 LOAD EFF: 74.3	GTD. EFF	ELEC. TYPE	NO LOAD AMPS
FULL LOAD PF: -	3/4 LOAD PF: 82	1/2 LOAD PF: 73.7	0	CAP START CAP RUN	7.8 / 3.9

F.L. TORQUE	LOCKED ROTOR AMPS	L.R. TORQUE	B.D. TORQUE	F.L. RISE°C
6.02 LB-FT	127 / 63.5	15.9 LB-FT 264	14.9 LB-FT 248	80

SOUND PRESSURE @ 3 FT.	SOUND POWER	ROTOR WK^2	MAX. WK^2	SAFE STALL TIME	STARTS /HOUR	APPROX. MOTOR WGT
- dBA	- dBA	0 LB-FT^2	- LB-FT^2	10 SEC.	-	0 LBS.

**\*\*\* SUPPLEMENTAL INFORMATION \*\*\***

DE BRACKET TYPE	ODE BRACKET TYPE	MOUNT TYPE	ORIENTATION	SEVERE DUTY	HAZARDOUS LOCATION	DRIP COVER	SCREENS	PAINT
C-FACE	STANDARD	RIGID	HORIZONTAL	FALSE	NONE	FALSE	NONE	GRAY (POWDER)

BEARINGS		GREASE	SHAFT TYPE	SPECIAL DE	SPECIAL ODE	SHAFT MATERIAL	FRAME MATERIAL
DE	OPE	MULTEMP SRL	T	NONE	NONE	1144 STRESSPROOF (C-223)	ROLLED STEEL
BALL	BALL						
6205	6205						

THERMO-PROTECTORS				THERMISTORS	CONTROL	SPACE /n HEATERS
THERMOSTATS	PROTECTORS	WDG RTDs	BRG RTDs	NONE	FALSE	NONE VOLTS
NONE	MANUAL	NONE	NONE	NONE	FALSE	NONE VOLTS

If Inverter equals NONE, contact factory for further information

INVERTER TORQUE: NONE
INV. HP SPEED RANGE: NONE
ENCODER: NONE
NONE NONE
NONE NONE PPR
BRAKE: NONE NONE
NONE P/N NONE
NONE NONE
NONE FT-LB NONE V NONE Hz

\*  
N  
O  
T  
E  
S  
\*

DATE: 06/27/2017 05:38:51 AM  
 FORM 3531 REV.3 02/07/99  
 \*\* Subject to change without notice.