

# PRODUCT INFORMATION PACKET

Model No: 056B17D5323  
Catalog No: G958  
1-1/2,1725,DP,56H,1/60/115/208-230  
Pressure Washers



Regal and Marathon are trademarks of Regal Beloit Corporation or one of its affiliated companies.

©2018 Regal Beloit Corporation, All Rights Reserved. MC017097E





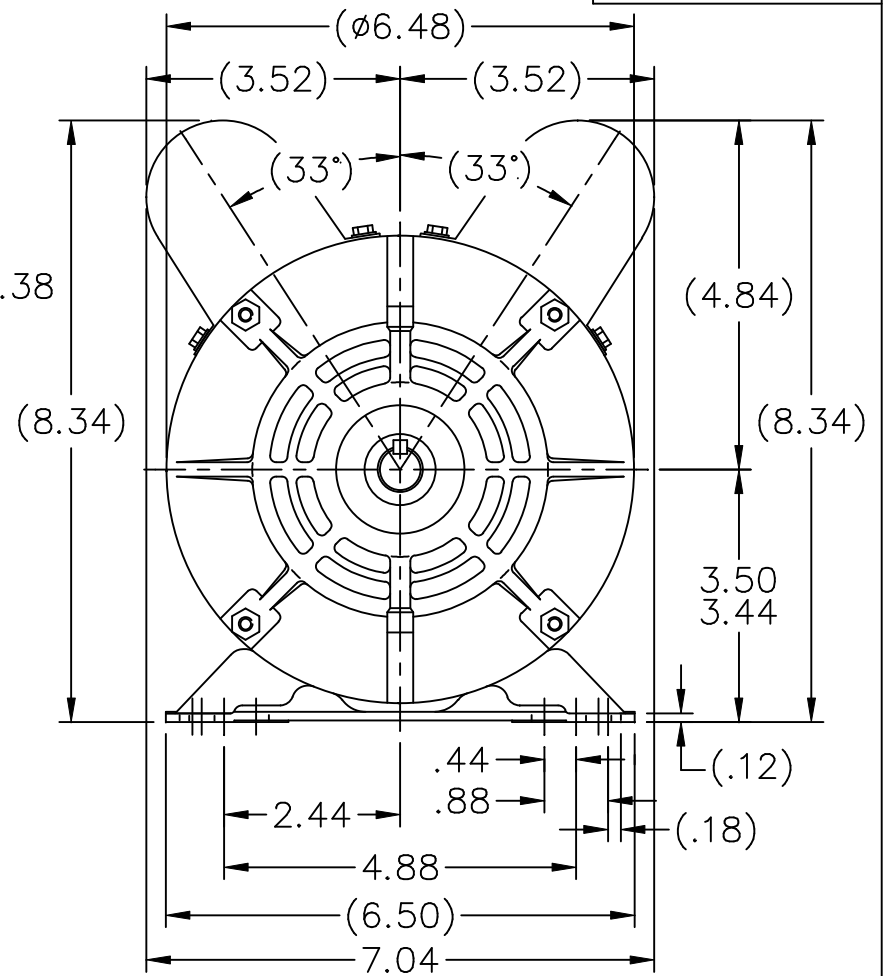
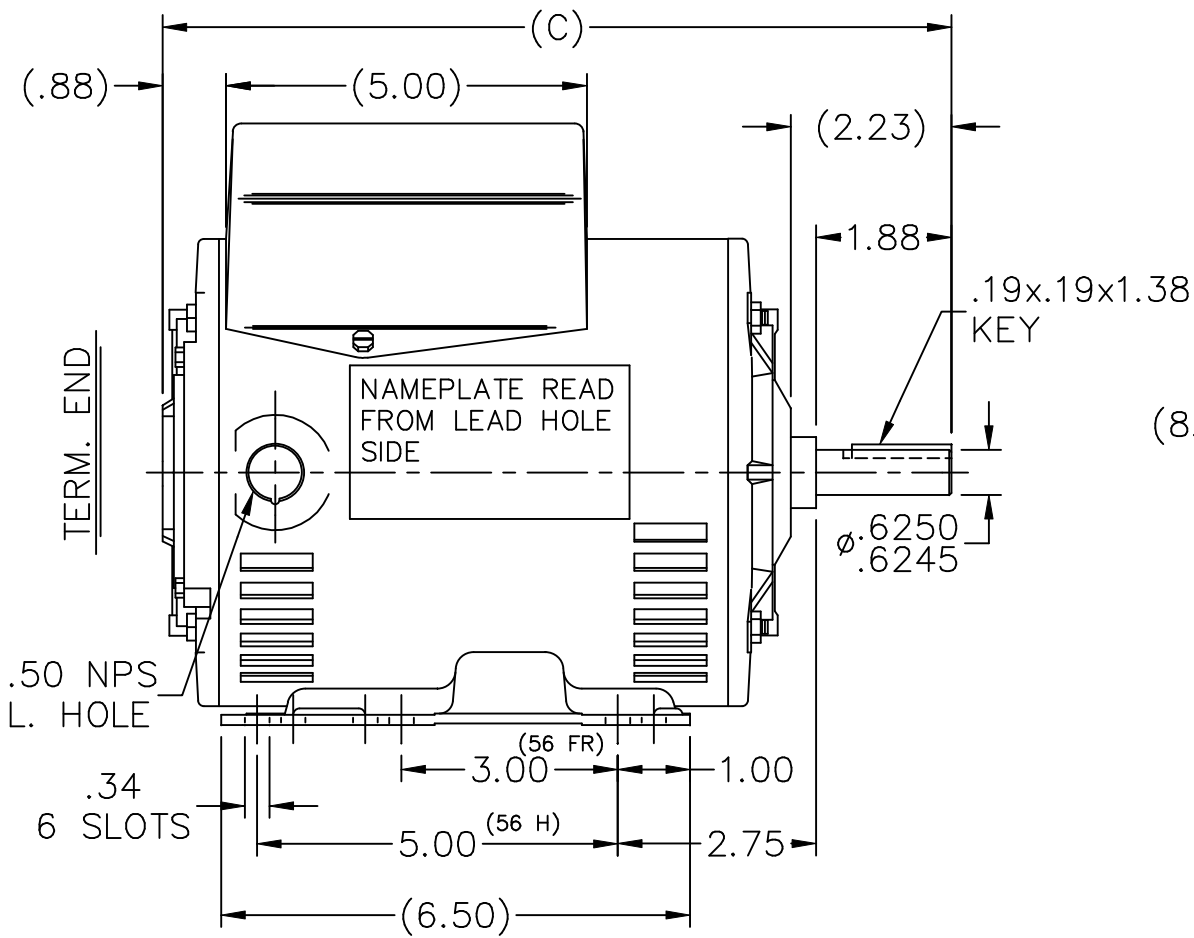
### Nameplate Specifications

Output HP	<b>1.50 Hp</b>	Output KW	<b>1.1 kW</b>
Frequency	<b>60 Hz</b>	Voltage	<b>115/208-230 V</b>
Current	<b>13.2/7.2-6.6 A</b>	Speed	<b>1725 rpm</b>
Service Factor	<b>1.15</b>	Phase	<b>1</b>
Efficiency	<b>80 %</b>	Duty	<b>Continuous</b>
Insulation Class	<b>B</b>	Design Code	<b>NO DESIGN CODE</b>
KVA Code	<b>J</b>	Frame	<b>56H</b>
Enclosure	<b>Drip Proof</b>	Overload Protector	<b>Manual</b>
Ambient Temperature	<b>40 °C</b>	Drive End Bearing Size	<b>6205</b>
Opp Drive End Bearing Size	<b>6205</b>	UL	<b>Recognized ( Not Protector)</b>
CSA	<b>Y</b>	CE	<b>Y</b>
IP Code	<b>22</b>		

### Technical Specifications

Electrical Type	<b>Capacitor Start Capacitor Run</b>	Starting Method	<b>Across The Line</b>
Poles	<b>4</b>	Rotation	<b>Selective Counterclockwise</b>
Mounting	<b>Rigid base</b>	Motor Orientation	<b>Horizontal</b>
Drive End Bearing	<b>Ball</b>	Opp Drive End Bearing	<b>Ball</b>
Frame Material	<b>Rolled Steel</b>	Shaft Type	<b>T</b>
Overall Length	<b>11.94 in</b>	Frame Length	<b>8.06 in</b>
Shaft Diameter	<b>0.625 in</b>	Shaft Extension	<b>2.23 in</b>
Assembly/Box Mounting	<b>F1 Only</b>		
Outline Drawing	<b>A-100146-806</b>	Connection Diagram	<b>102006-2</b>

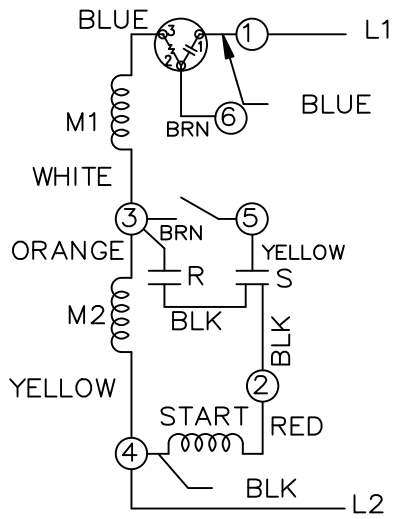
This is an uncontrolled document once printed or downloaded and is subject to change without notice. Date Created: 07/02/2018



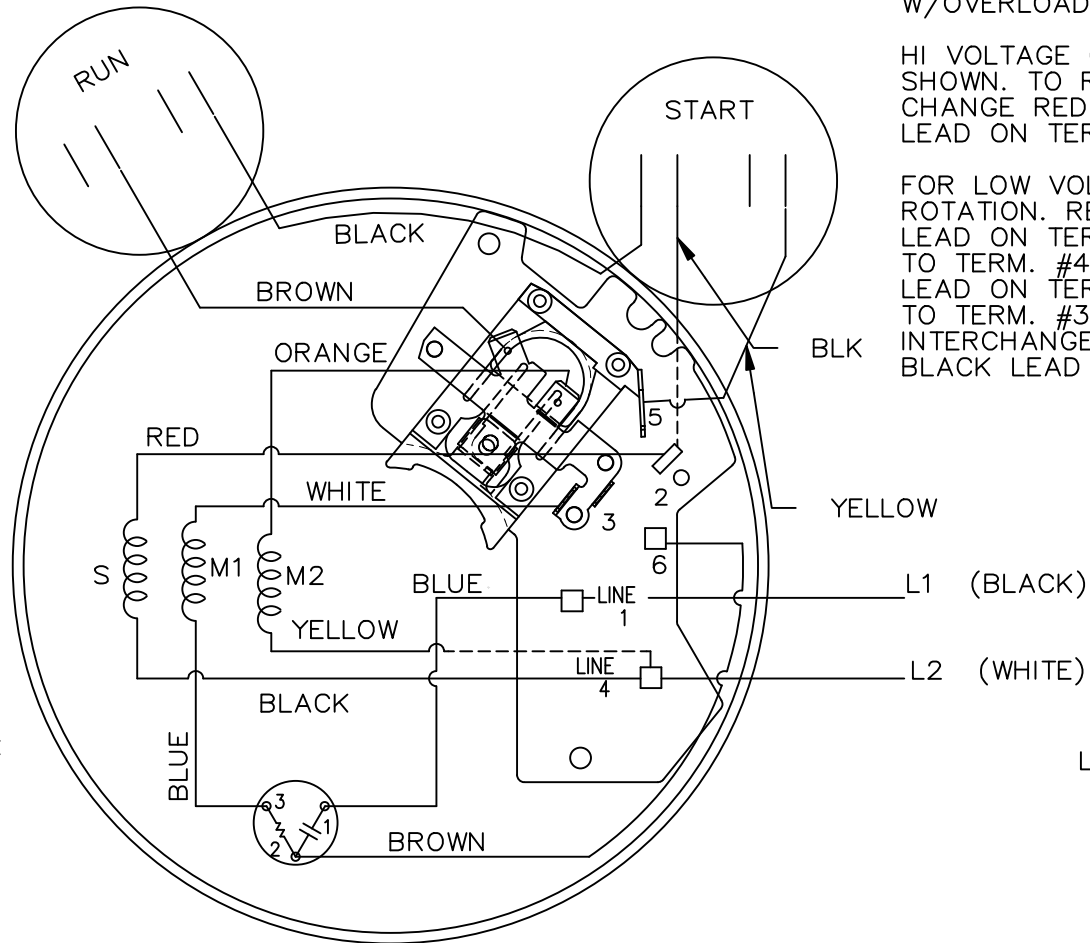
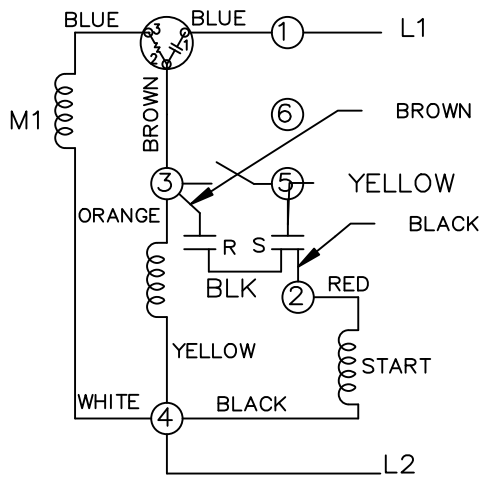
DASH	FR.	C	DASH	FR.	C
756	56-75	11.44	906	56-90	12.94
806	56-80	11.94			
856	56-85	12.44			

			TOLERANCES UNLESS SPECIFIED			DRAWN BLR 03-30-1998					
			DEC.	INCHES		CHK	ML	03-31-1998			
			.X	±.1	TITLE OUTLINE 56 FR.  MAT'L.  FINISH	APPD	GK	03-31-1998	SCALE	3=8	
5	REDRAWN IN AUTOCAD	TAT 05-09-2005	ML	.XXX ±.005		REF					
4	REDRAWN ON CADD	BLR 03-31-1998		.XXXX ±.0005		FMF					
NO.	REVISION	BY & DATE	CHK	ANG ±7'30"		PREV					
THIS DRAWING IN DESIGN AND DETAIL IS OUR PROPERTY AND MUST NOT BE USED EXCEPT IN CONNECTION WITH OUR WORK ALL RIGHTS OF DESIGN AND INVENTION ARE RESERVED THIS IS AN ELECTRONICALLY GENERATED DOCUMENT - DO NOT SCALE THIS PRINT			RFP		CAD FILE	100146	SIZE	DRAWING NO.	PAGE	OF	REV.
			DIST	WP	A	100146	A	100146	5	5	

HIGH VOLTAGE C.C.W.



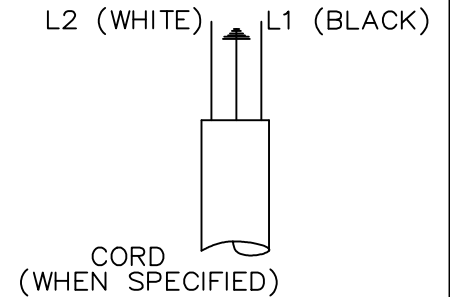
LOW VOLTAGE C.C.W.



DUAL VOLTAGE CAPACITOR  
START, CAPACITOR RUN  
W/OVERLOAD AND SELECT ROTATION

HI VOLTAGE C.C.W. ROTATION  
SHOWN. TO REVERSE INTER-  
CHANGE RED WITH BLACK  
LEAD ON TERMS. 2 & 4.

FOR LOW VOLTAGE C.C.W.  
ROTATION. REMOVE WHITE  
LEAD ON TERM. #3 & ATTACH  
TO TERM. #4. REMOVE BROWN  
LEAD ON TERM. #6 ATTACH  
TO TERM. #3. TO REVERSE  
INTERCHANGE RED WITH  
BLACK LEAD ON TERMS. 2 & 4.



		TOLERANCES UNLESS SPECIFIED		MARATHON ELECTRIC		DRAWN PGK 08-26-1996		
		DEC.	INCHES			CHK ML 09-05-1996		
		.X	±.1	TITLE CONNECTION DIAGRAM		APPD GK 09-05-1996		
		.XX	±.02			SCALE 5=8		
		.XXX	±.005			REF		
7	UPDATED PER IS11-3490	PN 8/31/2011	VC	.XXX	±.005	FMF		
6	REDRAWN ON CADD	PGK 09-05-1996		.XXXX	±.0005	PREV		
NO.	REVISION	BY & DATE	CHK	ANG	±'	FINISH		
THIS DRAWING IN DESIGN AND DETAIL IS OUR PROPERTY AND MUST NOT BE USED EXCEPT IN CONNECTION WITH OUR WORK ALL RIGHTS OF DESIGN AND INVENTION ARE RESERVED THIS IS AN ELECTRONICALLY GENERATED DOCUMENT - DO NOT SCALE THIS PRINT			RFP	CAD FILE 102006_3		SIZE A	DRAWING NO. 102006-2	PAGE OF 7
			DIST	WP				REV. 7

**CERTIFICATION DATA SHEET**

**Model#:** 56B17D5323 E **WINDING#:** ZB436 NONE 3  
**CONN. DIAGRAM:** 102006-2 **ASSEMBLY:** F1 ONLY  
**OUTLINE:** A-100146-806

**TYPICAL MOTOR PERFORMANCE DATA**

HP	KW	SYNC. RPM	F.L. RPM	FRAME	ENCLOSURE	KVA CODE	DESIGN			
1 1/2	1.12	1800	1725	56H	DP	J	NO DESIGN CODE			
PH	Hz	VOLTS	FL AMPS	START TYPE	DUTY	INSL	S.F	AMB°C	ELEVATION	
1	60	115/208-230	13.2/7.2-6.6	ACROSS THE LINE	CONTINUOUS	B3	1.15	40	3300	
FULL LOAD EFF: 80		3/4 LOAD EFF: 78		1/2 LOAD EFF: 72		GTD. EFF		ELEC. TYPE		NO LOAD AMPS
FULL LOAD PF: 92.5		3/4 LOAD PF: 92.1		1/2 LOAD PF: 87.7		77		CAP START CAP RUN		4.3 / 2.2
F.L. TORQUE		LOCKED ROTOR AMPS		L.R. TORQUE		B.D. TORQUE		F.L. RISE°C		
4.52 LB-FT		100 / 50		11.9 LB-FT 263		11.8 LB-FT 261		-		
SOUND PRESSURE @ 3 FT.	SOUND POWER	ROTOR WK^2	MAX. WK^2	SAFE STALL TIME	STARTS /HOUR	APPROX. MOTOR WGT				
- dBA	- dBA	- LB-FT^2	- LB-FT^2	10 SEC.	-	- LBS.				

**\*\*\* SUPPLEMENTAL INFORMATION \*\*\***

DE BRACKET TYPE	ODE BRACKET TYPE	MOUNT TYPE	ORIENTATION	SEVERE DUTY	HAZARDOUS LOCATION	DRIP COVER	SCREENS	PAINT
STANDARD	STANDARD	RIGID	HORIZONTAL	FALSE	NONE	FALSE	NONE	GRAY (POWDER)

BEARINGS		GREASE	SHAFT TYPE	SPECIAL DE	SPECIAL ODE	SHAFT MATERIAL	FRAME MATERIAL
DE	OPE	POLYREX EM	T	NONE	NONE	1144 STRESSPROOF (C-223)	ROLLED STEEL
BALL	BALL						
6205	6205						

THERMO-PROTECTORS				THERMISTORS	CONTROL	SPACE /n HEATERS
THERMOSTATS	PROTECTORS	WDG RTDs	BRG RTDs	NONE	FALSE	NONE VOLTS
NONE	MANUAL	NONE	NONE			

If Inverter equals NONE, contact factory for further information

INVERTER TORQUE: NONE
INV. HP SPEED RANGE: NONE
ENCODER: NONE
NONE NONE
NONE NONE PPR
BRAKE: NONE NONE
NONE P/N NONE
NONE NONE
NONE FT-LB NONE V NONE Hz

\*  
N  
O  
T  
E  
S  
\*

DATE: 06/27/2017 05:39:33 AM  
 FORM 3531 REV.3 02/07/99  
 \*\* Subject to change without notice.