

PRODUCT INFORMATION PACKET

Model No: 056B34D11012

Catalog No: G937A

1.50 HP General Purpose Motor, 1 phase, 3600 RPM, 115/230 V, 56 Frame, ODP
Single Phase ODP Motors





Nameplate Specifications

Output HP	1.50 Hp	Output KW	1.1 kW
Frequency	60 Hz	Voltage	115/230 V
Current	13.6/6.8 A	Speed	3450 rpm
Service Factor	1.15	Phase	1
Efficiency	81.5 %	Power Factor	93.4
Duty	Continuous	Insulation Class	B
Design Code	NO DESIGN CODE	KVA Code	L
Frame	56	Enclosure	Drip Proof
Thermal Protection	Manual	Ambient Temperature	40 °C
Drive End Bearing Size	6203	Opp Drive End Bearing Size	6203
UL	Recognized	CSA	Y
CE	Y	IP Code	12

Technical Specifications

Electrical Type	Capacitor Start Capacitor Run	Starting Method	Across The Line
Poles	2	Rotation	Selective Counterclockwise
Resistance Main	1 Ohms	Mounting	Rigid Base
Motor Orientation	Horizontal	Drive End Bearing	Ball
Opp Drive End Bearing	Ball	Frame Material	Rolled Steel
Shaft Type	T	Overall Length	12.93 in
Frame Length	8.25 in	Shaft Diameter	0.625 in
Shaft Extension	1.88 in	Assembly/Box Mounting	F1 OUT ODE BRKT RADIAL
Outline Drawing	056B34D11012-S01	Connection Drawing	17865101

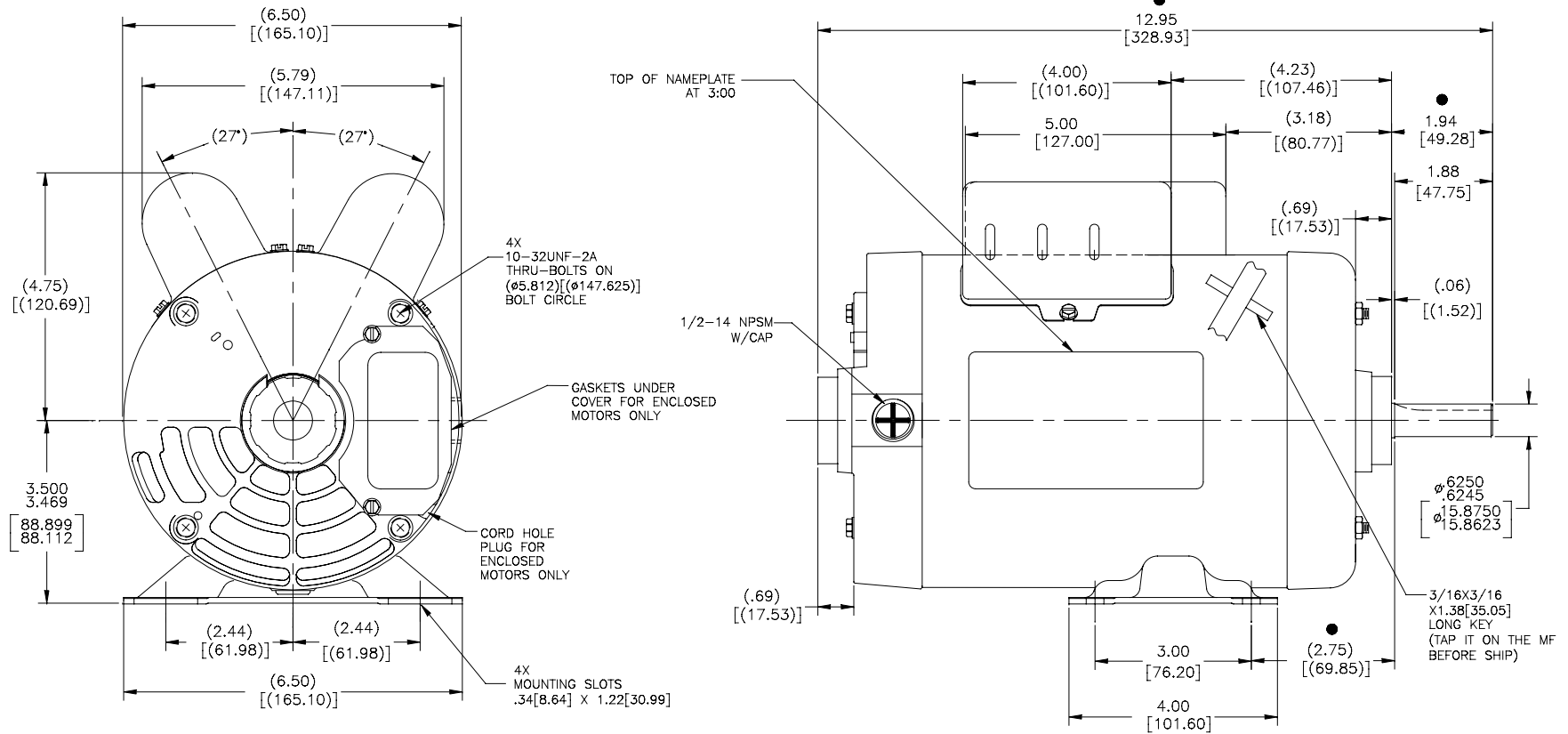
This is an uncontrolled document once printed or downloaded and is subject to change without notice. Date Created:14/12/2020

NOTES:

1. ALL DIMENSIONS SHOWN IN PARENTHESIS ARE REFERENCE DIMENSIONS. ALL OTHER DIMENSIONS ARE TOLERACED PER THE FOLLOWING CHART UNLESS OTHERWISE SPECIFIED.

OVERALL DIMENSION = ±.055[1.397]
 SHAFT EXTENSION = ±.034[.864]
 LEAD LENGTHS = ±1.00[25.40]
 EXTENDED
 THRU-BOLTS = ±.050[1.270]
 ANGULAR DIMENSIONS = ±2°

● = CRITICAL DIMENSION



DRAWING REVISION BY C X.AN		DATE 06-29-2015	TOLERANCES UNLESS OTHERWISE SPECIFIED		DRAWN BY: R.LIAN	
ECO-0079651 APPROVED BY H.ZHANG		DATE 06-29-2015	DEC. INCH	mm ANGLE	DATE: 11-17-2014	
ECO DESCRIPTION SEE ECO			.XX ±0.1	[±2.5]	APPROVED BY: J.ZHU	DESCRIPTION MODEL-CFHP-56FR OUTLINE
COPYRIGHT REGAL BELOIT AMERICA, INC. ALL RIGHTS RESERVED. PROPRIETARY AND CONFIDENTIAL INFORMATION - THIS DOCUMENT IS THE PROPERTY OF REGAL BELOIT AMERICA, INC. (CONSEP) AND CONTAINS OWNERS PROPRIETARY INFORMATION. ANY REPRODUCTION, COPIATION OR OTHER USE WITHOUT THE WRITTEN PERMISSION OF REGAL BELOIT AMERICA, INC. IS STRICTLY PROHIBITED. BY RECEIVING IT, YOU AGREE THAT IT, AND/OR ANY PART OF IT, SHALL NOT BE DISCLOSED TO ANY PERSON, CORPORATION OR OTHER ENTITY, SUPPLIER, AND/OR USER WITHOUT THE EXPRESS WRITTEN PERMISSION OF REGAL BELOIT AMERICA, INC. THIS DOCUMENT SHALL BE RETURNED TO OWNER UPON REQUEST. IT MAY BE SUBJECT TO CERTAIN RESTRICTIONS UNDER APPLICABLE EXPORT CONTROL LAWS AND REGULATIONS.			.XXX ±0.002	[±0.51]	DATE: 11-17-2014	MATERIAL
			.XXXX ±0.0005	[±0.127]	REFERENCE	PROCESS/FINISH
			REMOVE BURRS & BREAK SHARP EDGES .003/015	[0.076/3.81]	THIRD ANGLE PROJECTION	SIZE DWG NO
			CORNER FILLETS .02	[.51]		056B34D11012
			MACHINED SURFACES			SHEET
			mm SHOWN IN BRACKETS			1

CERTIFICATION DATA SHEET

Model#: 56B34D11012 A WINDING#: SS2521392 NONE 0
 CONN. DIAGRAM: 17865101 ASSEMBLY: F1 OUT ODE BRKT RADIAL
 OUTLINE: 56B34D11012-S01

TYPICAL MOTOR PERFORMANCE DATA

HP	KW	SYNC. RPM	F.L. RPM	FRAME	ENCLOSURE	KVA CODE	DESIGN
1 1/2	1.12	3600	3450	56	DP	L	NO DESIGN CODE

PH	Hz	VOLTS	FL AMPS	START TYPE	DUTY	INSL	S.F	AMB°C	ELEVATION
1	60	115/230	13.6/6.8	ACROSS THE LINE	CONTINUOUS	B3	1.15	40	3300

FULL LOAD EFF: 81.5	3/4 LOAD EFF: -	1/2 LOAD EFF: -	GTD. EFF	ELEC. TYPE	NO LOAD AMPS
FULL LOAD PF: 93.4	3/4 LOAD PF: -	1/2 LOAD PF: -	78.5	CAP START CAP RUN	/

F.L. TORQUE	LOCKED ROTOR AMPS	L.R. TORQUE	B.D. TORQUE	F.L. RISE°C
36 LB-FT	112 / 56	73 LB-FT 0	132 LB-FT 0	-

SOUND PRESSURE @ 3 FT.	SOUND POWER	ROTOR WK^2	MAX. WK^2	SAFE STALL TIME	STARTS /HOUR	APPROX. MOTOR WGT
0 dBA	10 dBA	0 LB-FT^2	1.5 LB-FT^2	10 SEC.	2	0 LBS.

*** SUPPLEMENTAL INFORMATION ***

DE BRACKET TYPE	ODE BRACKET TYPE	MOUNT TYPE	ORIENTATION	SEVERE DUTY	HAZARDOUS LOCATION	DRIP COVER	SCREENS	PAINT
STANDARD	STANDARD	RIGID	HORIZONTAL	FALSE	NONE	FALSE	NONE	GRAY (POWDER)

BEARINGS		GREASE	SHAFT TYPE	SPECIAL DE	SPECIAL ODE	SHAFT MATERIAL	FRAME MATERIAL
DE	OPE						
BALL	BALL	POLYREX EM	T	NONE	NONE	1144 STRESSPROOF (C-223)	ROLLED STEEL
6203	6203						

THERMO-PROTECTORS				THERMISTORS	CONTROL	SPACE /n HEATERS
THERMOSTATS	PROTECTORS	WDG RTDs	BRG RTDs			
NONE	MANUAL	NONE	NONE	NONE	FALSE	NONE VOLTS

If Inverter equals NONE, contact factory for further information

*
N
O
T
E
S
*

INVERTER TORQUE: NONE
INV. HP SPEED RANGE: NONE
ENCODER: NONE
NONE NONE
NONE NONE PPR
BRAKE: NONE NONE
NONE P/N NONE
NONE NONE
NONE FT-LB NONE V NONE Hz



MARATHON ELECTRIC CORPORATION
TYPICAL PERFORMANCE CURVE for AC MOTOR

Customer

Curve at

230

Volts

HP 1.50

PHASE 1

Model No 56B34D11012

60

HZ

VOLTS 115/230

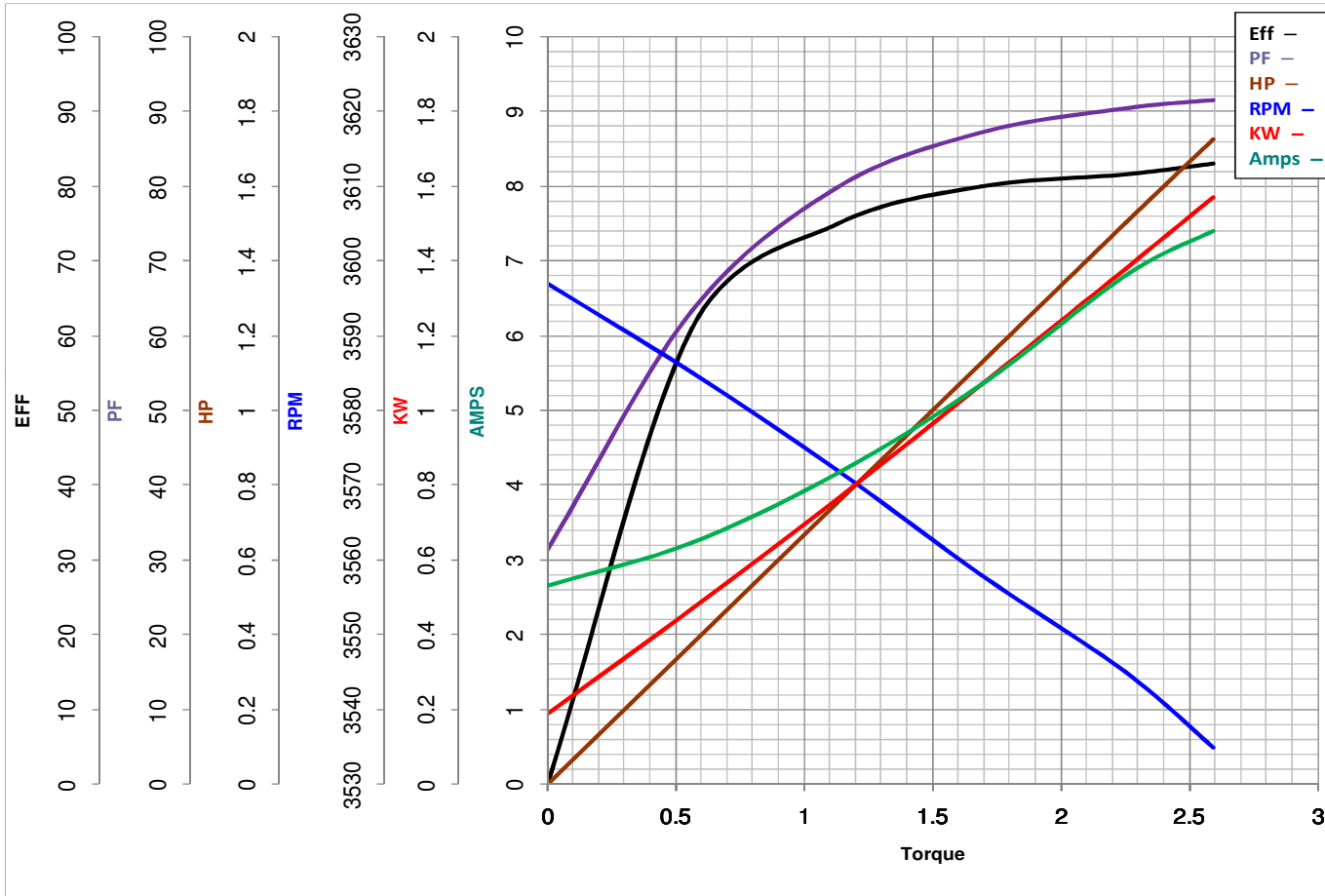
1.5

HP

Catalog No G937A

HZ 60

RPM 3450



Torque in Lb.Ft

FL TORQUE 2.25 Lb.Ft
BD TORQUE 132.0 Lb.Ft
LR TORQUE 73 Lb.Ft

FL AMPS 13.6/6.8
PU TORQUE 57.0 Lb.Ft
LR AMPS 56

WINDING SS2521392-0

Date 1/9/2019