

PRODUCT INFORMATION PACKET

Model No: 056B34F5332

Catalog No: T017

1.50 HP Power Tools Motor, 1 phase, 3600 RPM, 115/208-230 V, 56 Frame, TEFC
Power Tool Motors





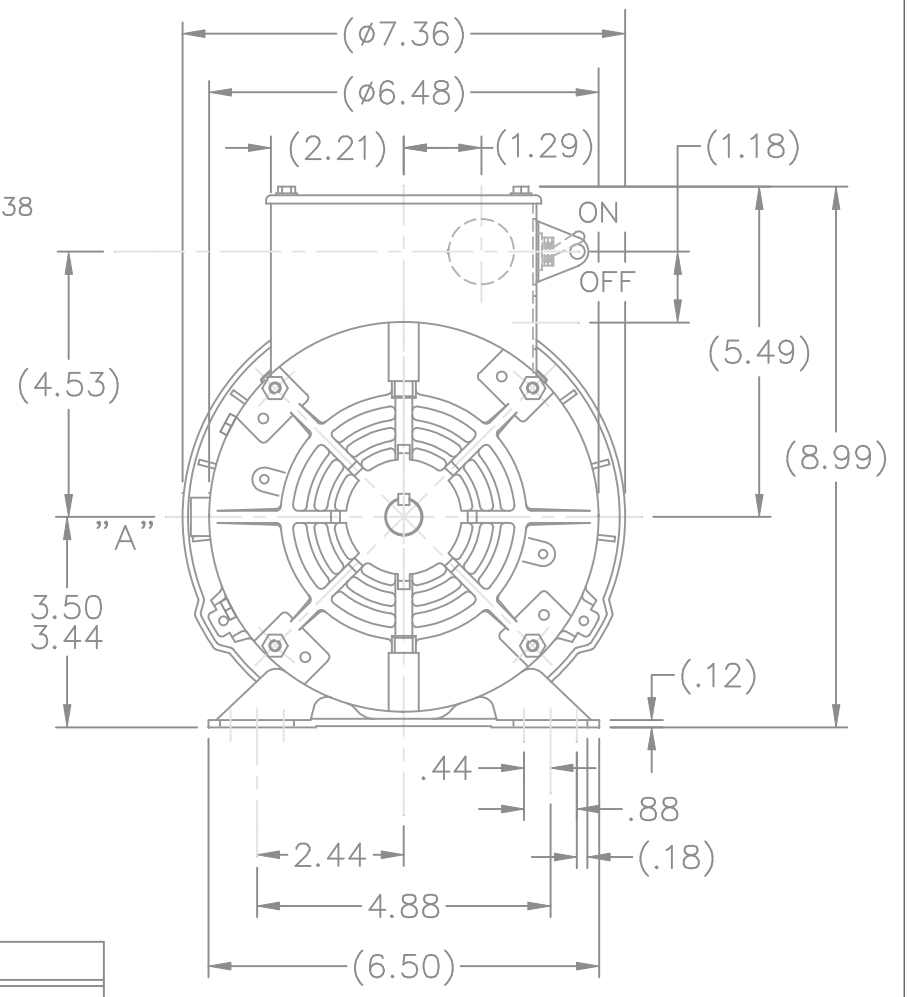
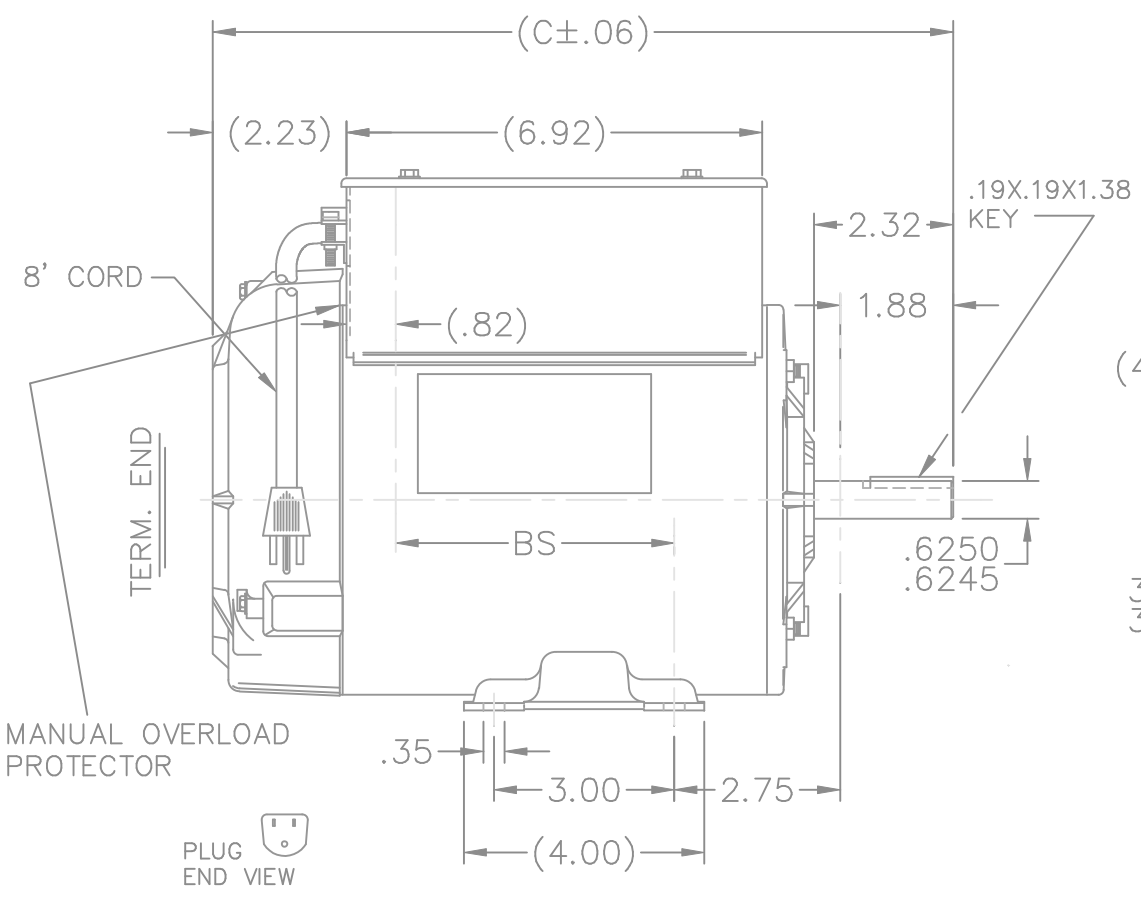
Nameplate Specifications

Output HP	1.50 Hp	Output KW	1.1 kW
Frequency	60 Hz	Voltage	115/208-230 V
Current	14.2/7.9-7.1 A	Speed	3450 rpm
Service Factor	1.15	Phase	1
Efficiency	78.5 %	Power Factor	87.5
Duty	Continuous	Insulation Class	B
Design Code	L	KVA Code	H
Frame	56	Enclosure	Totally Enclosed Fan Cooled
Thermal Protection	Manual	Ambient Temperature	40 °C
Drive End Bearing Size	6203	Opp Drive End Bearing Size	6203
UL	Recognized (Not Protector)	CSA	Y
CE	N	IP Code	43

Technical Specifications

Electrical Type	Capacitor Start Capacitor Run	Starting Method	Across The Line
Poles	2	Rotation	Selective Counterclockwise
Resistance Main	0 Ohms	Mounting	Rigid Base
Motor Orientation	Horizontal	Drive End Bearing	Ball
Opp Drive End Bearing	Ball	Frame Material	Rolled Steel
Shaft Type	T	Overall Length	12.82 in
Shaft Diameter	0.625 in	Shaft Extension	1.88 in
Assembly/Box Mounting	F3		
Connection Drawing	102006-60	Outline Drawing	A-104258-756

This is an uncontrolled document once printed or downloaded and is subject to change without notice. Date Created:14/10/2020



NOTE:
NAMEPLATE TO BE READ
FROM LOCATION "A"

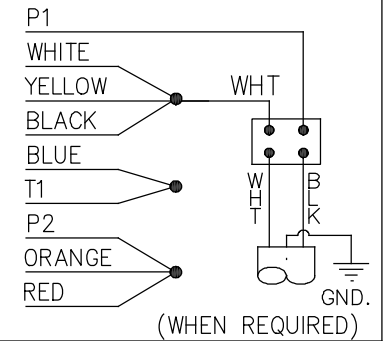
DASH	FRAME	C	BS	DASH	FRAME	C	BS
				806	56-80	13.32	5.64
656	56-65	11.82	4.14	856	56-85	13.82	6.14
706	"-70	12.32	4.64				
756	"-75	12.82	5.14				

				TOLERANCES UNLESS SPECIFIED		MARATHON ELECTRIC	DRAWN PGK 03-05-1997					
				DEC.	INCHES		CHK	ML	SAT	03-19-1997		
				.X	±.1	TITLE OUTLINE 56 FR. - BB - TEFC - 1ø	SCALE 5=16					
				.XX	±.03		REF					
2	REMOVED KNOCKOUTS ON C' BOX		TAT 04-26-2004	ML	.XXX	±.005	REF					
1	NEW DRAWING	MU13686	PGK 03-20-1997		.XXXX	±.0005	REF					
NO.	REVISION	BY & DATE	CHK	ANG	±7'30"		FINISH	PREV				
THIS DRAWING IN DESIGN AND DETAIL IS OUR PROPERTY AND MUST NOT BE USED EXCEPT IN CONNECTION WITH OUR WORK ALL RIGHTS OF DESIGN AND INVENTION ARE RESERVED THIS IS AN ELECTRONICALLY GENERATED DOCUMENT - DO NOT SCALE THIS PRINT				RFP	CAD FILE 104258			SIZE	DRAWING NO.	PAGE	OF	REV.
				DIST	WP			A	104258			2

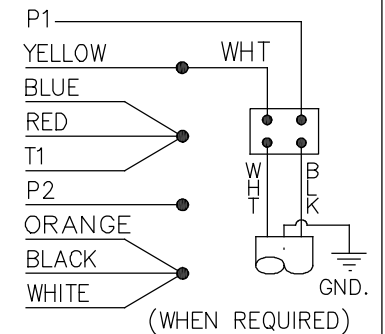
102006-60

DUAL VOLTAGE
CAP START-CAP RUN
OVERLOAD
SELECT ROTATION

LOW VOLT. CCW ROT.

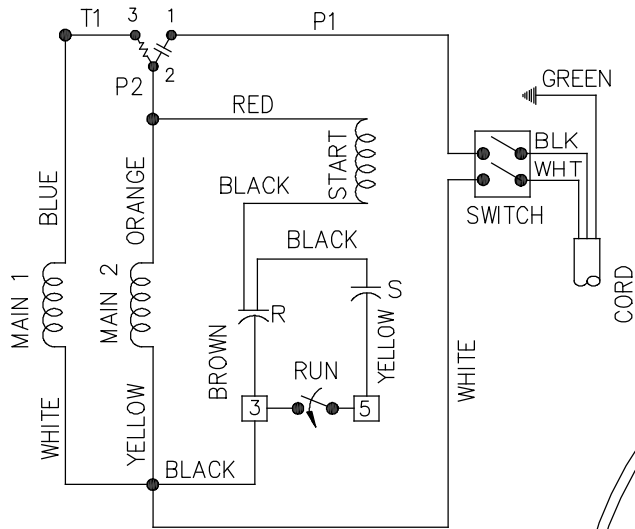


HIGH VOLT. CCW ROT.

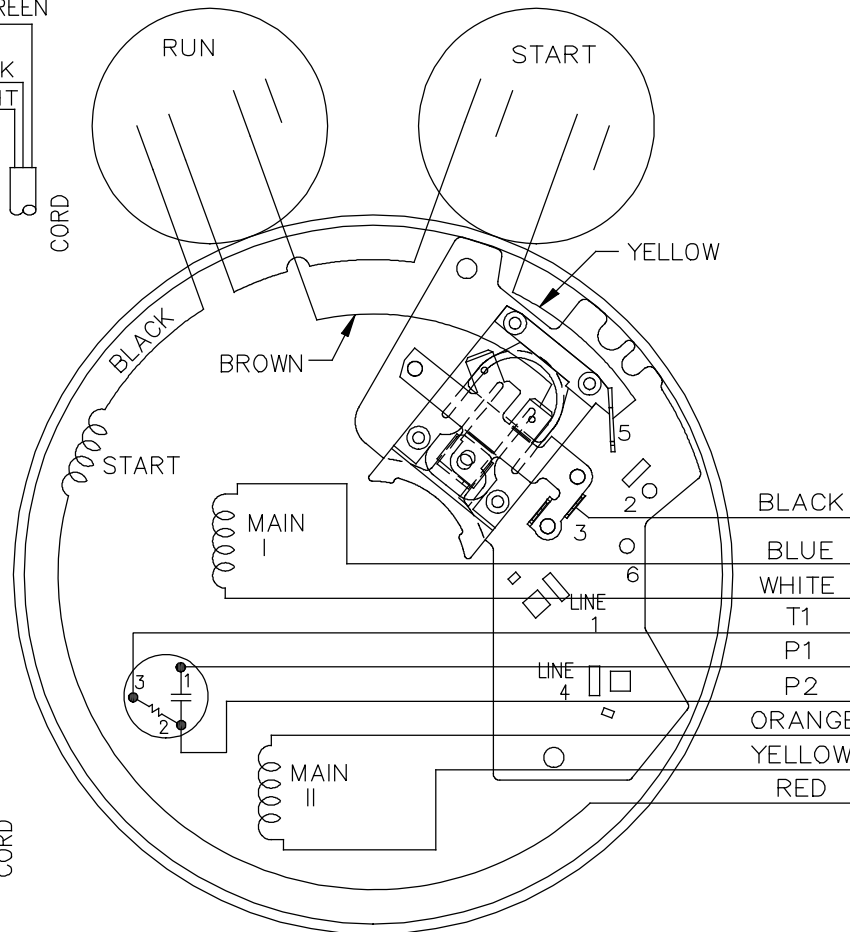
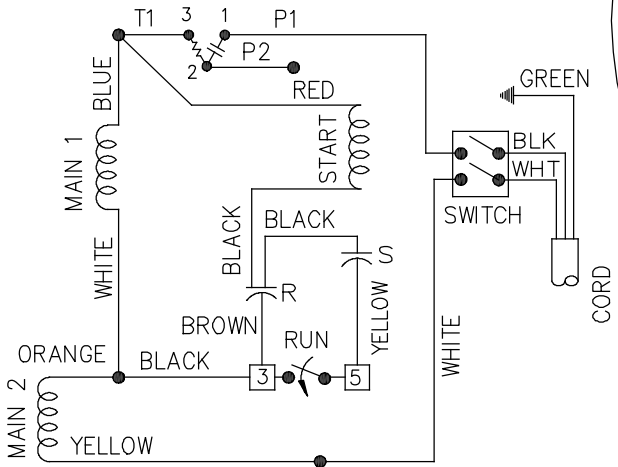



FOR CW ROT. EITHER
VOLTAGE INTERCHANGE
RED WITH BLACK LEAD.

LOW VOLTAGE C.C.W.



HIGH VOLTAGE C.C.W.



NO.	REVISION	BY & DATE	CHK	ANG	FINISH	TOLERANCES UNLESS SPECIFIED		DRAWN DD 04-20-1994		
						DEC.	INCHES			
05	CHANGED L2 TO WHITE PER ECO-0184322	SG 04/01/20	GSR	DEC.	INCHES	 Regal Beloit America, Inc.		CHK ML 04-21-1994		
04	CHANGED LOGO TO REGAL	SL 04/04/2016	SKM	.X	±.1			APPD MB 04-26-1994		
03	ADDED (WHEN REQUIRED TO CORD)	MU29193	CAV	02-25-2000	.XX		±.02	TITLE CONNECTION DIAGRAM	SCALE 5=8	
02	CAP LEAD COLORS REV'D	CN 16210	MRB	11-16-1994	.XXX		±.005		REF	
01	NEW DRAWING	4138426	DD	05-02-1994	.XXXX		±.0005	MAT'L.	FMF	
								PREV		
THIS DRAWING IN DESIGN AND DETAIL IS OUR PROPERTY AND MUST NOT BE USED EXCEPT IN CONNECTION WITH OUR WORK ALL RIGHTS OF DESIGN AND INVENTION ARE RESERVED THIS IS AN ELECTRONICALLY GENERATED DOCUMENT - DO NOT SCALE THIS PRINT						RFP	CAD FILE 10200660	SIZE A	DRAWING NO. 102006-60	PAGE OF 05
						DIST WP				

CERTIFICATION DATA SHEET

Model#: 56B34F5332 D WINDING#: ZB216 NONE 3
 CONN. DIAGRAM: 102006-60 ASSEMBLY: F3
 OUTLINE: A-104258-756

TYPICAL MOTOR PERFORMANCE DATA

HP	KW	SYNC. RPM	F.L. RPM	FRAME	ENCLOSURE	KVA CODE	DESIGN
1 1/2	1.12	3600	3450	56	TEFC	H	L

PH	Hz	VOLTS	FL AMPS	START TYPE	DUTY	INSL	S.F	AMB°C	ELEVATION
1	60	115/208-230	14.2/7.7-7.1	ACROSS THE LINE	CONTINUOUS	B3	1.15	40	3300

FULL LOAD EFF: -	3/4 LOAD EFF: 72.5	1/2 LOAD EFF: 68	GTD. EFF	ELEC. TYPE	NO LOAD AMPS
FULL LOAD PF: -	3/4 LOAD PF: 85.5	1/2 LOAD PF: 78.5	0	CAP START CAP RUN	5.2 / 2.6

F.L. TORQUE	LOCKED ROTOR AMPS	L.R. TORQUE	B.D. TORQUE	F.L. RISE°C
2.24 LB-FT	96 / 48	5.2 LB-FT 0	6 LB-FT 0	-

SOUND PRESSURE @ 3 FT.	SOUND POWER	ROTOR WK^2	MAX. WK^2	SAFE STALL TIME	STARTS /HOUR	APPROX. MOTOR WGT
0 dBA	10 dBA	0 LB-FT^2	4.2 LB-FT^2	10 SEC.	0	0 LBS.

*** SUPPLEMENTAL INFORMATION ***

DE BRACKET TYPE	ODE BRACKET TYPE	MOUNT TYPE	ORIENTATION	SEVERE DUTY	HAZARDOUS LOCATION	DRIP COVER	SCREENS	PAINT
STANDARD	BRAKE	RIGID	HORIZONTAL	FALSE	NONE	FALSE	NONE	GRAY (POWDER)

BEARINGS		GREASE	SHAFT TYPE	SPECIAL DE	SPECIAL ODE	SHAFT MATERIAL	FRAME MATERIAL
DE	OPE						
BALL	BALL	POLYREX EM	T	NONE	NONE	1144 STRESSPROOF (C-223)	ROLLED STEEL
6203	6203						

THERMO-PROTECTORS				THERMISTORS	CONTROL	SPACE /n HEATERS
THERMOSTATS	PROTECTORS	WDG RTDs	BRG RTDs			
NONE	MANUAL	NONE	NONE	NONE	FALSE	NONE VOLTS

If Inverter equals NONE, contact factory for further information

*
N
O
T
E
S
*

INVERTER TORQUE: NONE
INV. HP SPEED RANGE: NONE
ENCODER: NONE
NONE NONE
NONE NONE PPR
BRAKE: PROVISIONS FOR KIT NONE
NONE P/N NONE
NONE NONE
NONE FT-LB NONE V NONE Hz

DATE: 06/21/2017 08:14:50 AM
 FORM 3531 REV.3 02/07/99
 ** Subject to change without notice.



MARATHON ELECTRIC CORPORATION
TYPICAL PERFORMANCE CURVE for AC MOTOR

Customer

Curve at

230 Volts
60 HZ
1.5 HP

HP 1.50

PHASE 1

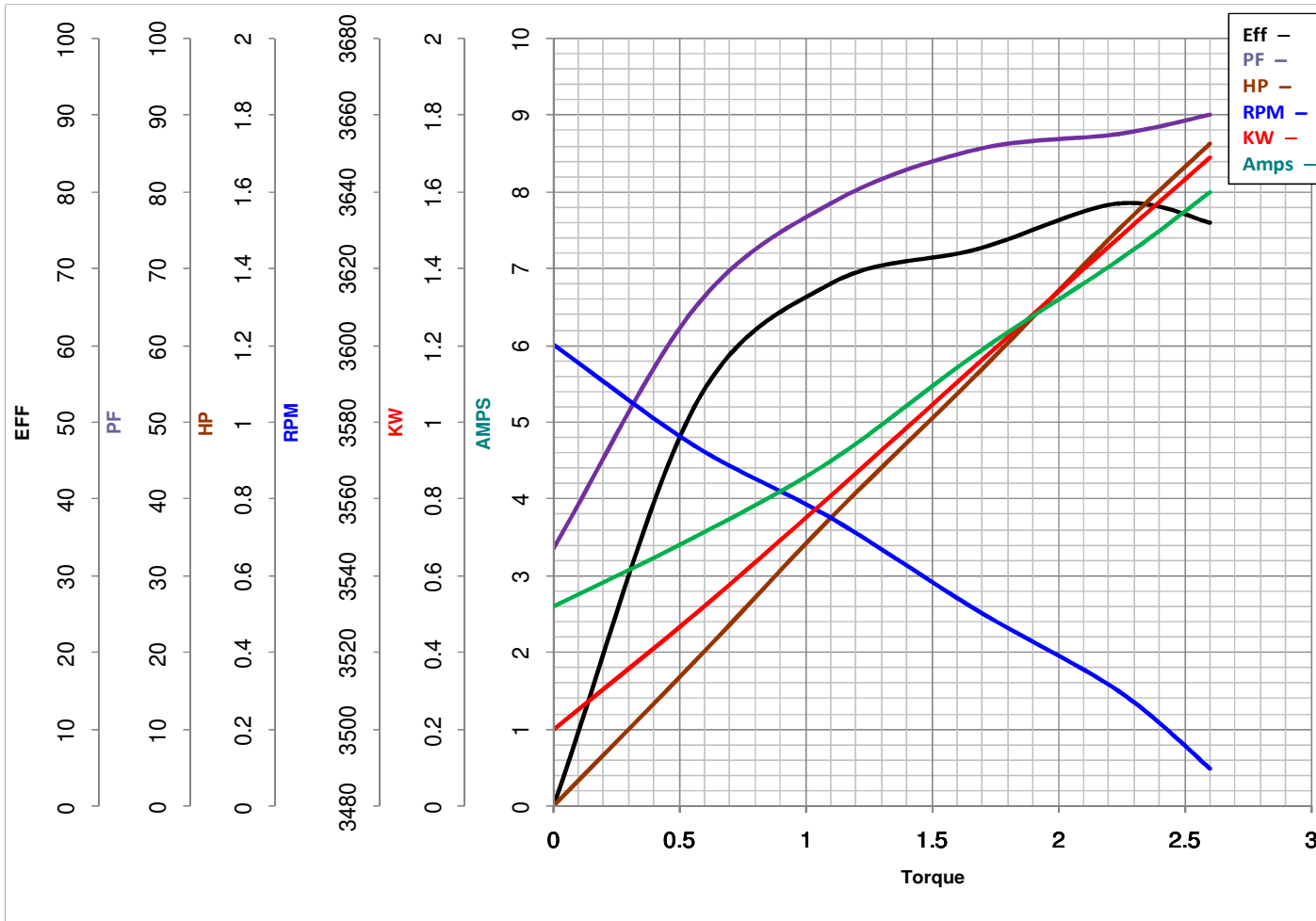
Model No 56B34F5332

VOLTS 115/208-230

Catalog No T017

HZ 60

RPM 3450



Torque in Lb.Ft

FL TORQUE 2.24 Lb.Ft
BD TORQUE 6.0 Lb.Ft
LR TORQUE 5.2 Lb.Ft

FL AMPS 14.2/7.7-7.1
PU TORQUE 4.8 Lb.Ft
LR AMPS 48

WINDING ZB216-3

Date 1/7/2019