

PRODUCT INFORMATION PACKET

Model No: 056C34W5306
Catalog No: N556
1/3,3450,TEFC,56C,1/60/115/208-230
General Purpose



Regal and Marathon are trademarks of Regal Beloit Corporation or one of its affiliated companies.

©2018 Regal Beloit Corporation, All Rights Reserved. MC017097E





Nameplate Specifications

Output HP	0.33 Hp	Output KW	0.25 kW
Frequency	60 Hz	Voltage	115/208-230 V
Current	5.2/2.7-2.6 A	Speed	3450 rpm
Service Factor	1.15	Phase	1
Efficiency	65 %	Duty	Continuous
Insulation Class	F	Design Code	N
KVA Code	L	Frame	56C
Enclosure	Totally Enclosed Fan Cooled	Overload Protector	No
Ambient Temperature	40 °C	Drive End Bearing Size	6205
Opp Drive End Bearing Size	6203	UL	Recognized
CSA	Y	CE	N
IP Code	55		

Technical Specifications

Electrical Type	Capacitor Start Induction Run	Starting Method	Across The Line
Poles	2	Rotation	Selective Counterclockwise
Mounting	Rigid base	Motor Orientation	HORIZONTAL
Drive End Bearing	BALL	Opp Drive End Bearing	BALL
Frame Material	Rolled Steel	Shaft Type	NEMA 56
Overall Length	10.16 in	Frame Length	4.50 in
Shaft Diameter	0.625 in	Shaft Extension	2.06 in
Assembly/Box Mounting	F1 ONLY		
Outline Drawing	028881ME-475B	Connection Diagram	00527807ME

This is an uncontrolled document once printed or downloaded and is subject to change without notice. Date Created: 10/30/2018

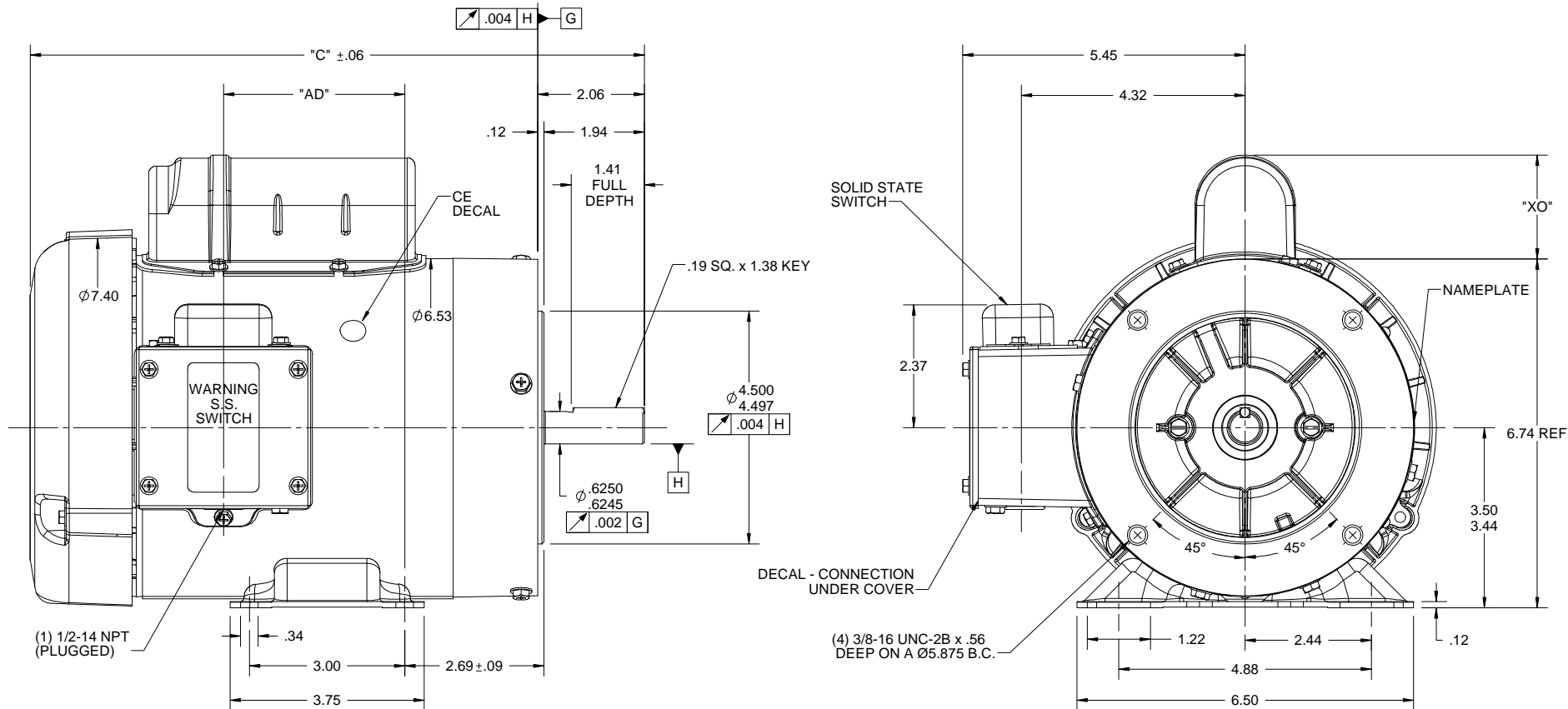
4

3

Uncontrolled Copy

2

1

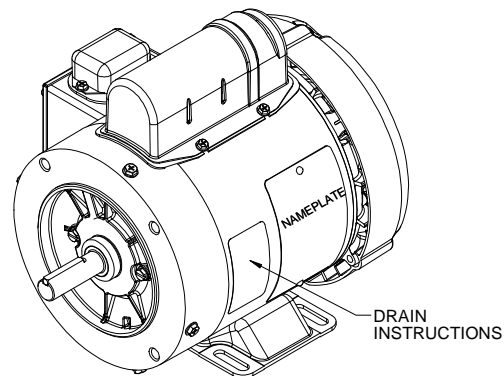


B

B

A

A

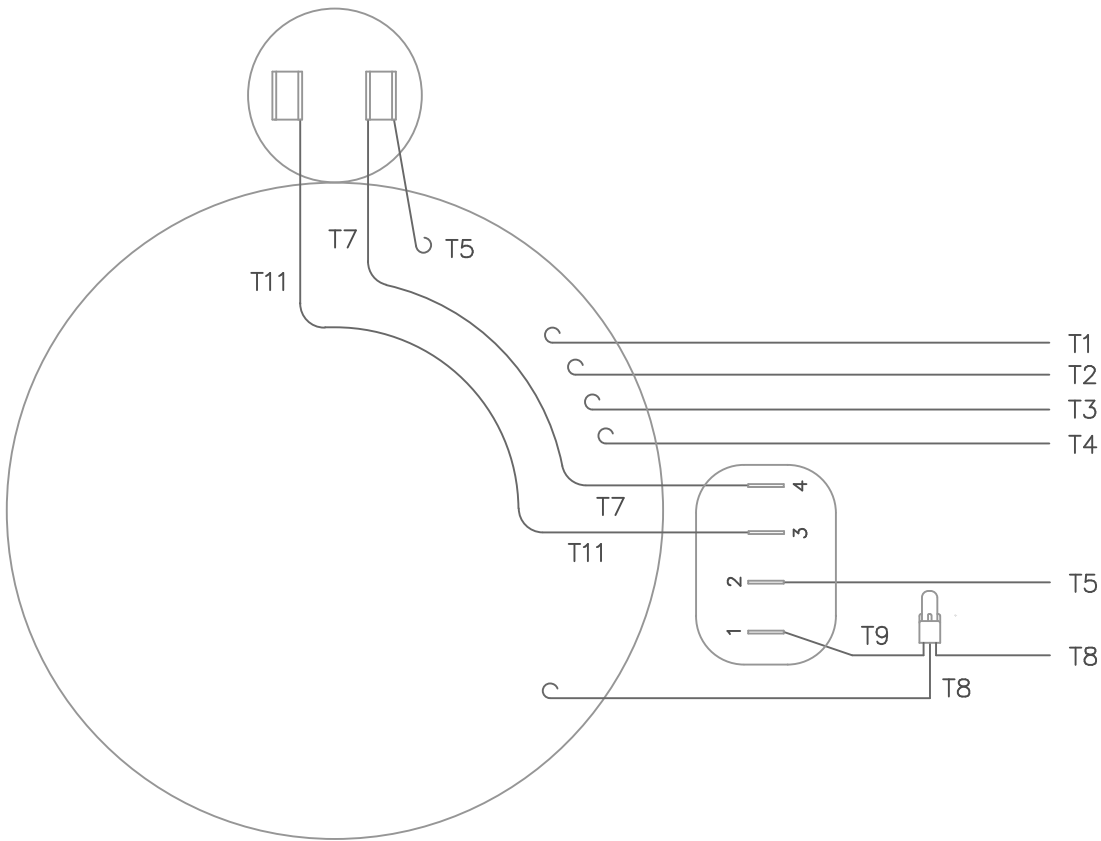


NOTES:

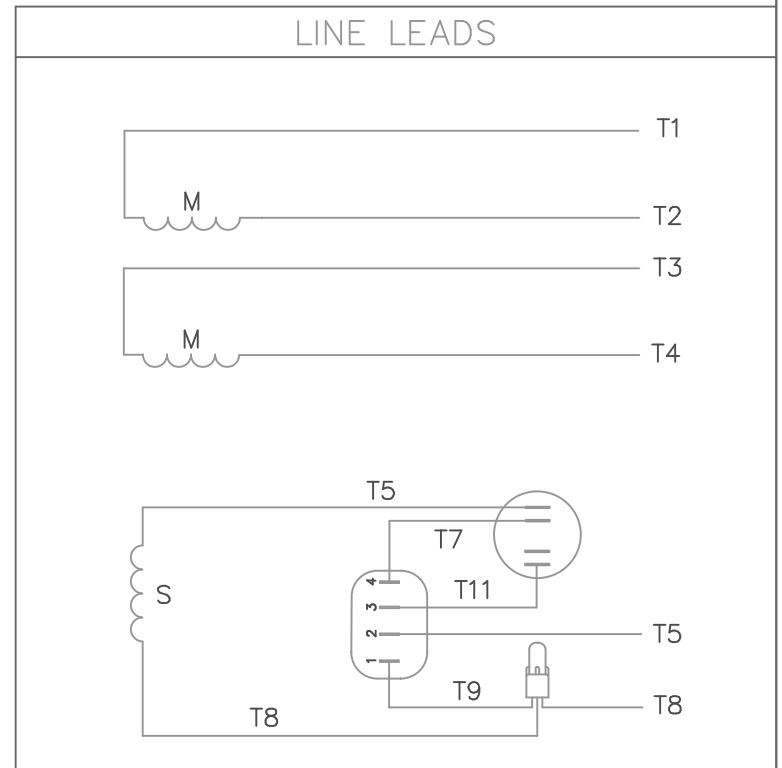
- 1) SHAFT SEALS & V-RING.
- 2) DRAIN HOLES IN ENDBELLS & CONDUIT BOX.
- 3) GASKETS THROUGHOUT.
- 4) STAINLESS STEEL SHAFT, HARDWARE, & NAMEPLATE

DASH NO.	"C"	"AD"	CAP. DASH	"XO"
450	10.16	2.00		
475	10.41	2.25		
500	10.66	2.50		
550	11.16	3.00		
575	11.41	3.25		
600	11.66	3.50	A	1.54
650	12.16	4.00	B	2.01
700	12.66	4.50	C	2.25
750	13.16	5.00		

DRAWING REVISION C	REVISION BY AS	DATE 01/23/2018	TOLERANCES UNLESS OTHERWISE SPECIFIED: DEC. INCH mm ANGLE .X ±.01 [+2.5] ±7-30° .XX ±.03 [+0.76] .XXX ±.005 [+0.127] .XXXX ±.0005 [+0.0127]	DRAWN BY RVD 02/26/2009	Regal Beloit America, Inc.
ECO ECO-0138365	APPROVED BY AS	DATE 01/23/2018	REMOVE BURRS & BREAK SHARP EDGES: .003/.015 [0.076/.381] X 45° CORNER FILLETS: R.02 [51]	DATE	
ECO DESCRIPTION DASH # 575 ADDED			MACHINED SURFACES: 200 INCH mm 5.1 mm SHOWN IN [BRACKETS]	APPROVED BY RVD 02/26/2009	DESCRIPTION OUTLINE TEFC - RIGID "C" FACE
COPYRIGHT REGAL BELOIT AMERICA, INC. ALL RIGHTS RESERVED. PROPRIETARY AND CONFIDENTIAL INFORMATION - THIS DOCUMENT IS THE PROPERTY OF REGAL BELOIT AMERICA, INC. ("OWNER") AND CONTAINS OWNER'S PROPRIETARY INFORMATION. ANY PERSON, CORPORATION OR OTHER FIRM RECEIVING IT IS DEEMED, BY RECEIVING IT, TO AGREE THAT IT, AND/OR ANY PART OF IT, SHALL NOT BE DISCLOSED TO ANY PERSON, CORPORATION OR OTHER ENTITY, DUPLICATED, AND/OR USED, EXCEPT AS EXPRESSLY APPROVED IN WRITING IN ADVANCE BY OWNER. THIS DOCUMENT SHALL BE RETURNED TO OWNER UPON REQUEST. IT MAY BE SUBJECT TO CERTAIN RESTRICTIONS UNDER APPLICABLE EXPORT CONTROL LAWS AND REGULATIONS.			REFERENCE 028881	DATE	MATERIAL WASHGUARD
			THIRD ANGLE PROJECTION	SIZE B	PROCESS/FINISH
				DRAWING NUMBER 028881ME	SHEET 1 OF 1



VIEW FROM OUTSIDE OF MOTOR AT SWITCH END.



	ROTATION FACING LEAD END	L1	L2	JOIN & INSULATE
HIGH VOLT	C.C.W.	T1	T4 T5	T2,T3 T8
	C.W.	T1	T4 T8	T2,T3 T5
LOW VOLT	C.C.W.	T1,T3 T8	T2,T4 T5	
	C.W.	T1,T3 T5	T2,T4 T8	

		TOLERANCES UNLESS SPECIFIED			DRAWN LST 1/19/09 CHK APPD SCALE 1=1 REF FMF PREV
		DEC.	INCHES		TITLE
		.X	±.1		EXTERNAL WIRING DIAGRAM
		.XX	±.01		TYPE "C" WITHOUT PROTECTOR
		.XXX	±.005		MAT'L. DECAL - 004012
		.XXXX	±.0005	FINISH	
NO.	REVISION	BY & DATE	CHK	ANG ±1/2'	
THIS DRAWING IN DESIGN AND DETAIL IS OUR PROPERTY AND MUST NOT BE USED EXCEPT IN CONNECTION WITH OUR WORK ALL RIGHTS OF DESIGN AND INVENTION ARE RESERVED THIS IS AN ELECTRONICALLY GENERATED DOCUMENT - DO NOT SCALE THIS PRINT			RFP	CAD FILE 00527807ME	SIZE A
			DIST		DRAWING NO. 005278-07ME
					PAGE OF
					REV.