

PRODUCT INFORMATION PACKET

Model No: 056T11D15526

Catalog No: K007A

1 HP General Purpose Motor, 3 phase, 1200 RPM, 230/460 V, 56H Frame, ODP
Three Phase ODP Motors



Regal and Marathon are trademarks of Regal Beloit Corporation or one of its affiliated companies.
©2020 Regal Beloit Corporation, All Rights Reserved. MC017097E





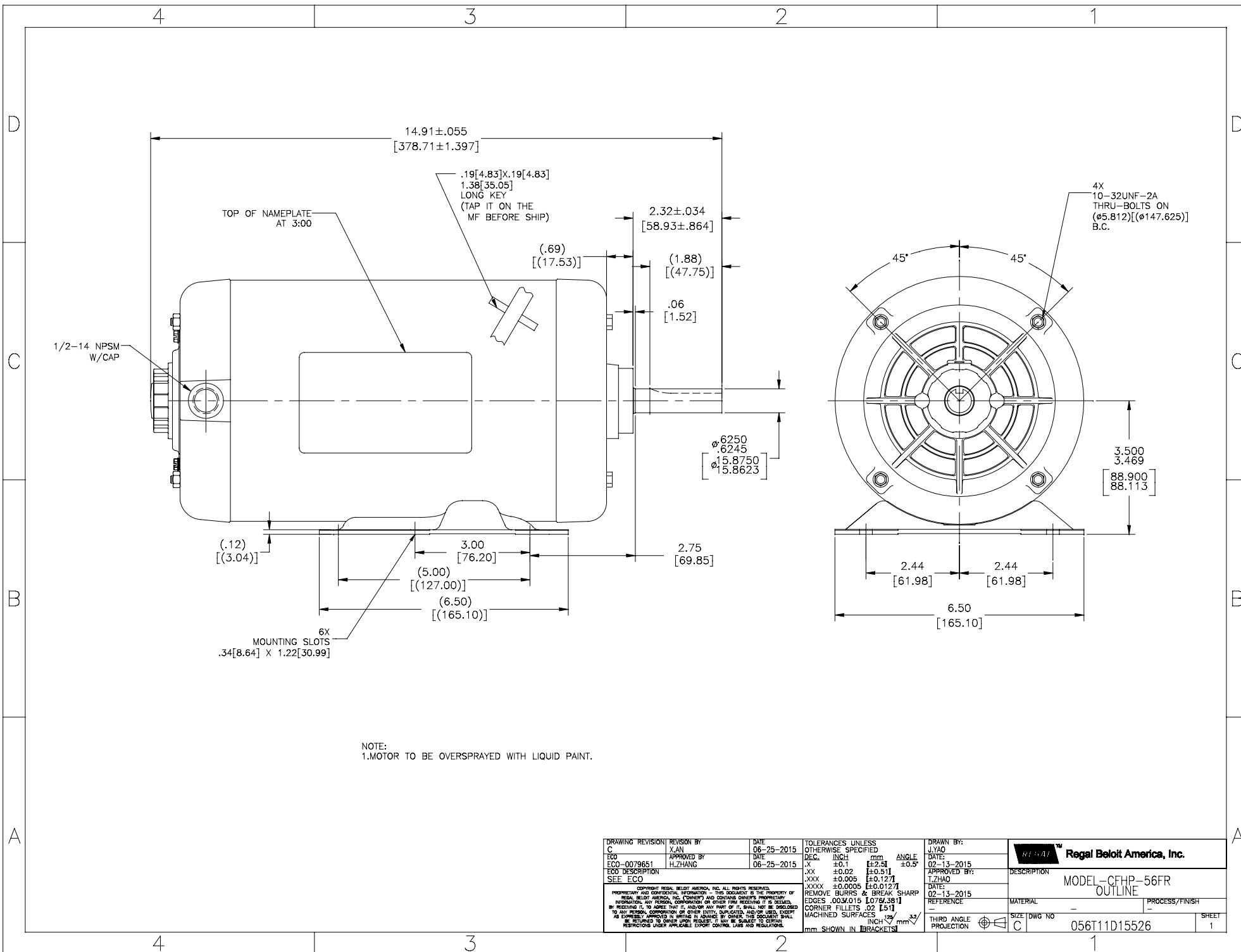
Nameplate Specifications

Output HP	1 Hp	Output KW	0.75 kW
Frequency	60 Hz	Voltage	230/460 V
Current	4.0/2.0 A	Speed	1140 rpm
Service Factor	1.15	Phase	3
Efficiency	82.5 %	Power Factor	52.4
Duty	Continuous	Insulation Class	B
Design Code	B	KVA Code	J
Frame	56H	Enclosure	Drip Proof
Thermal Protection	No	Ambient Temperature	40 °C
Drive End Bearing Size	6203	Opp Drive End Bearing Size	6203
UL	Recognized	CSA	Y
CE	Y	IP Code	22

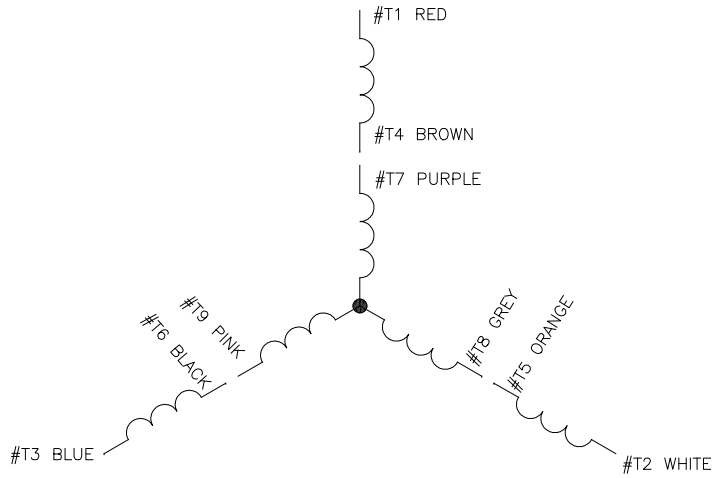
Technical Specifications

Electrical Type	Squirrel Cage Induction Run	Starting Method	Across The Line
Poles	6	Rotation	Reversible
Resistance Main	11.5 Ohms	Mounting	Rigid Base
Motor Orientation	Horizontal	Drive End Bearing	Ball
Opp Drive End Bearing	Ball	Frame Material	Rolled Steel
Shaft Type	T	Overall Length	14.91 in
Frame Length	8.25 in	Shaft Diameter	0.625 in
Shaft Extension	1.88 in	Assembly/Box Mounting	F1 OUT ODE BRKT RADIAL
Outline Drawing	056T11D15526-S01	Connection Drawing	D0000561-001

This is an uncontrolled document once printed or downloaded and is subject to change without notice. Date Created:14/12/2020



DRAWING REVISION BY C	REVISION BY X,AN	DATE 06-25-2015	TOLERANCES UNLESS OTHERWISE SPECIFIED	DRAWN BY: J,YAO	
ECO-0079651	APPROVED BY H,ZHANG	DATE 06-25-2015	DEC. INCH mm ANGLE X ±0.1 [±2.5] ±0.5° XX ±0.02 [±0.51] XXX ±0.005 [±0.127] XXXX ±0.0005 [±0.0127]	DATE: 02-13-2015	
SEE ECO			REMOVE BURRS & BREAK SHARP EDGES .003/015 [078/381] CORNER FILLETS .02 [51] MACHINED SURFACES	APPROVED BY: T,ZHAO	DESCRIPTION MODEL-CFHP-56FR OUTLINE
<small>COPYRIGHT REGAL BELOIT AMERICA, INC. ALL RIGHTS RESERVED. PROPRIETARY AND CONFIDENTIAL INFORMATION - THIS DOCUMENT IS THE PROPERTY OF REGAL BELOIT AMERICA, INC. (OWNER) AND CONTAINS OWNER'S PROPRIETARY INFORMATION. ANY REPRODUCTION, COPIATION OR OTHER USE WITHOUT THE WRITTEN PERMISSION OF REGAL BELOIT AMERICA, INC. IS STRICTLY PROHIBITED. BY RECEIVING IT, YOU AGREE THAT IT, AND/OR ANY PART OF IT, SHALL NOT BE DISCLOSED TO ANY PERSON, CORPORATION OR OTHER ENTITY, SUPPLIER, AND/OR USER WITHOUT THE EXPRESS WRITTEN PERMISSION OF REGAL BELOIT AMERICA, INC. THIS DOCUMENT SHALL BE RETURNED TO OWNER UPON REQUEST. IT MAY BE SUBJECT TO CERTAIN RESTRICTIONS UNDER APPLICABLE EXPORT CONTROL LAWS AND REGULATIONS.</small>			THIRD ANGLE PROJECTION	DATE: 02-13-2015	MATERIAL
			mm SHOWN IN BRACKETS	REFERENCE	PROCESS/FINISH
				SIZE DWG NO C	056T11D15526
				SHEET	1



CONNECT AS FOLLOWS

HIGH VOLTAGE	
#T1 - RED	LINE A
#T2 - WHITE	LINE B
#T3 - BLUE	LINE C
#T4 - BROWN	TIE TOGETHER
#T7 - PURPLE	TIE TOGETHER
#T5 - ORANGE	TIE TOGETHER
#T8 - GREY	TIE TOGETHER
#T6 - BLACK	TIE TOGETHER
#T9 - PINK	TIE TOGETHER

LOW VOLTAGE	
#T1 - RED	LINE A
#T7 - PURPLE	LINE B
#T2 - WHITE	LINE B
#T8 - GREY	LINE C
#T3 - BLUE	LINE C
#T9 - PINK	TIE TOGETHER
#T5 - ORANGE	TIE TOGETHER
#T6 - BLACK	TIE TOGETHER
#T4 - BROWN	TIE TOGETHER

NOTES:

- LEADS MAY BE MULTICOLORED AS SHOWN FOR GROUP -01 OR SINGLE COLOR FOR GROUP -02. IN EITHER CASE THE NUMBERING SEQUENCE WILL BE THE SAME.

OPTIONAL CORD CONNECTION
WHEN SPECIFIED IN BOM
LINE A WHITE
LINE B RED
LINE C BLACK

DRAWING REVISION A	REVISION BY H.ZHANG	DATE 12-11-2014	TOLERANCES UNLESS OTHERWISE SPECIFIED DEC. INCH mm ANGLE X ±0.1 [±2.5] ±0.5° XX ±0.02 [±0.51] .XXX ±0.005 [±0.127] XXXX ±0.0005 [±0.0127]	DRAWN BY: H.ZHANG	DATE: 12-11-2014	Regal Beloit America, Inc. DESCRIPTION CONN DIAGRAM-EXTERNAL
ECO-0067205	APPROVED BY J.ZHAN	DATE 12-11-2014	REMOVE BURRS & BREAK SHARP EDGES .003/.015 [076/.381] CORNER FILLETS .02 [.51] MACHINED SURFACES .02 [0.51] INCH mm	APPROVED BY: J.ZHAN	DATE: 12-11-2014	
NEW	<small>COPYRIGHT REGAL BELOIT AMERICA, INC. ALL RIGHTS RESERVED. PROPRIETARY AND CONFIDENTIAL INFORMATION - THIS DOCUMENT IS THE PROPERTY OF REGAL BELOIT AMERICA, INC. ("OWNER") AND CONTAINS OWNER'S PROPRIETARY INFORMATION. ANY REPRODUCTION OR OTHER USE WITHOUT THE WRITTEN PERMISSION OF REGAL BELOIT AMERICA, INC. IS STRICTLY PROHIBITED. BY RECEIVING IT, TO AGREE THAT IT, AND/OR ANY PART OF IT, SHALL NOT BE DISCLOSED TO ANY PERSON, CORPORATION OR OTHER ENTITY, SUPPLIER, AND/OR USER EXCEPT AS EXPRESSLY APPROVED IN WRITING BY OWNER. THIS DOCUMENT SHALL BE RETURNED TO OWNER UPON REQUEST. IT MAY BE SUBJECT TO CERTAIN RESTRICTIONS UNDER APPLICABLE EXPORT CONTROL LAWS AND REGULATIONS.</small>		REFERENCE	MATERIAL	PROCESS/FINISH	
			THIRD ANGLE PROJECTION	SIZE DWG NO C	D0000561-001	SHEET 1

CERTIFICATION DATA SHEET

Model#: 56T11D15526 A **WINDING#:** SS0071711 NONE 3
CONN. DIAGRAM: D0000561-001 **ASSEMBLY:** F1 OUT ODE BRKT
 RADIAL
OUTLINE: 056T11D15526-S01

TYPICAL MOTOR PERFORMANCE DATA

HP	KW	SYNC. RPM	F.L. RPM	FRAME	ENCLOSURE	KVA CODE	DESIGN
1&3/4	.75&.56	1200	1140&950	56H	DP	J	B

PH	Hz	VOLTS	FL AMPS	START TYPE	DUTY	INSL	S.F	AMB°C	ELEVATION
3	60/50	230/460#190/ 380	1.0/2.0&3.6/1. 8	ACROSS THE LINE	CONTINUOU S	B3	1.15/1.15	40	3300

FULL LOAD EFF: 82.5&84	3/4 LOAD EFF: -	1/2 LOAD EFF: -	GTD. EFF	ELEC. TYPE	NO LOAD AMPS
FULL LOAD PF: 52.4&55	3/4 LOAD PF: -	1/2 LOAD PF: -	80	SQ CAGE IND RUN	/

F.L. TORQUE	LOCKED ROTOR AMPS	L.R. TORQUE	B.D. TORQUE	F.L. RISE°C
54 LB-FT	19.6 / 9.8	170 LB-FT 0	223 LB-FT 0	0

SOUND PRESSURE @ 3 FT.	SOUND POWER	ROTOR WK^2	MAX. WK^2	SAFE STALL TIME	STARTS /HOUR	APPROX. MOTOR WGT
0 dBA	10 dBA	0 LB-FT^2	1.5 LB-FT^2	10 SEC.	2	0 LBS.

***** SUPPLEMENTAL INFORMATION *****

DE BRACKET TYPE	ODE BRACKET TYPE	MOUNT TYPE	ORIENTATION	SEVERE DUTY	HAZARDOUS LOCATION	DRIP COVER	SCREENS	PAINT
STANDARD	STANDARD	RIGID	HORIZONTAL	FALSE	NONE	FALSE	NONE	GRAY (ENAMEL)

BEARINGS		GREASE	SHAFT TYPE	SPECIAL DE	SPECIAL ODE	SHAFT MATERIAL	FRAME MATERIAL
DE	OPE						
BALL	BALL	POLYREX EM	T	NONE	NONE	1144 STRESSPROOF (C-223)	ROLLED STEEL
6203	6203						

THERMO-PROTECTORS				THERMISTORS	CONTROL	SPACE /n HEATERS
THERMOSTATS	PROTECTORS	WDG RTDs	BRG RTDs			
NONE	NOT	NONE	NONE	NONE	FALSE	NONE VOLTS

If Inverter equals NONE, contact factory for further information

*
N
O
T
E
S
*

INVERTER TORQUE: NONE
INV. HP SPEED RANGE: NONE
ENCODER: NONE
NONE NONE
NONE NONE PPR
BRAKE: NONE NONE
NONE P/N NONE
NONE NONE
NONE FT-LB NONE V NONE Hz

** Subject to change without notice.